



**Nevada
System of
Higher
Education**

NSHE Enrollment Planning

**Information to support the preparation
of the 2007-09 biennial budget**

January 2006

Prepared by the
NSHE Office of Academic & Student Affairs



Report Objective

Provide information to support decision making in the preparation of the 2007-09 biennial budget

- NSHE Enrollment History
- Enrollment Plans (2005-06 thru 2014-15)
- Population Trends & Demographics





NSHE Enrollment History



Headcount Enrollment

Headcount Enrollment:

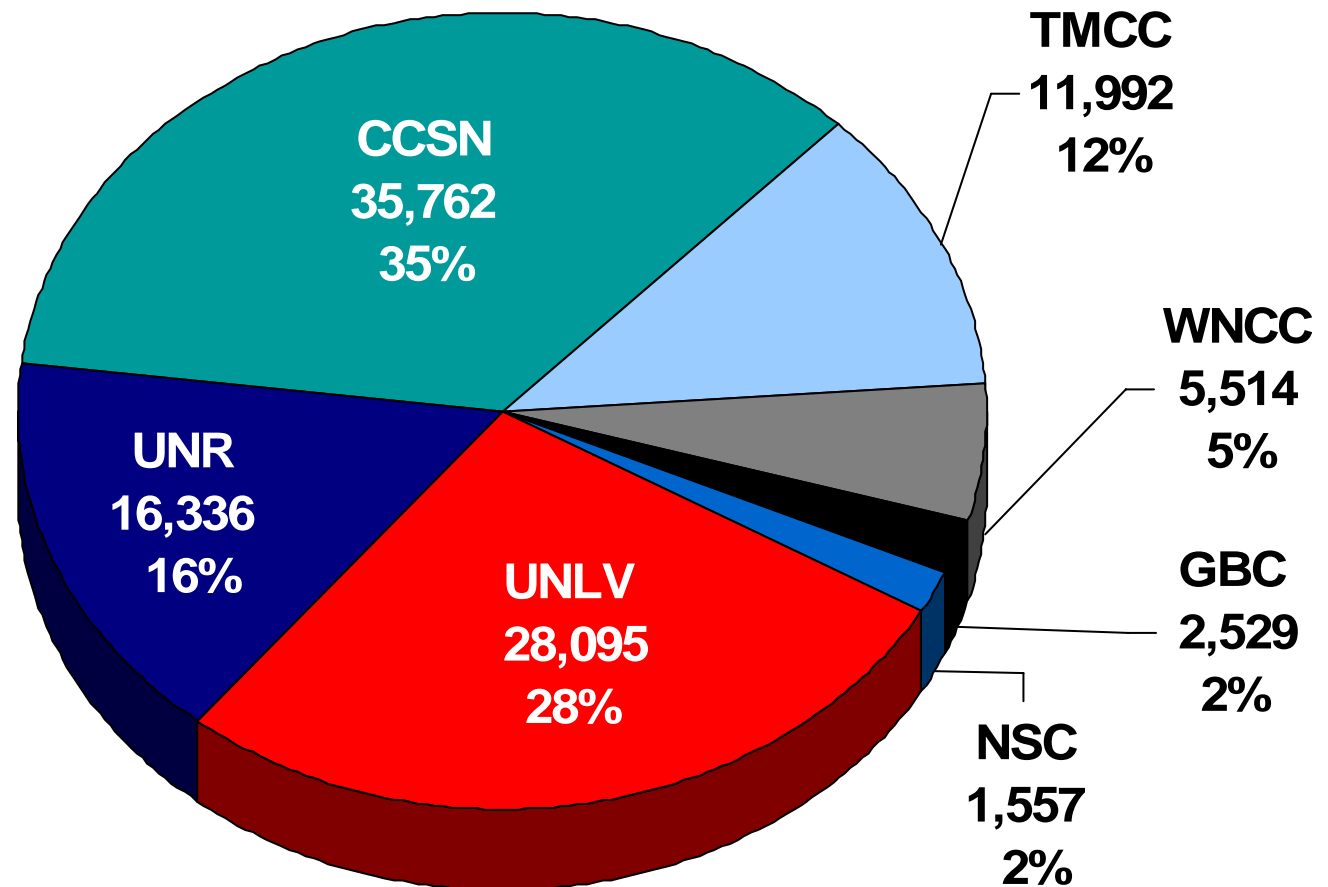
students enrolled in at least one credit course

Comm. Colleges comprised 55% of all headcount enrollment in Fall 2005

In Fall 1995, Comm. Colleges comprised 53% of all headcount enrollment

Student Headcount Distribution

Fall 2005



Source: NSHE Preliminary Enrollment Report

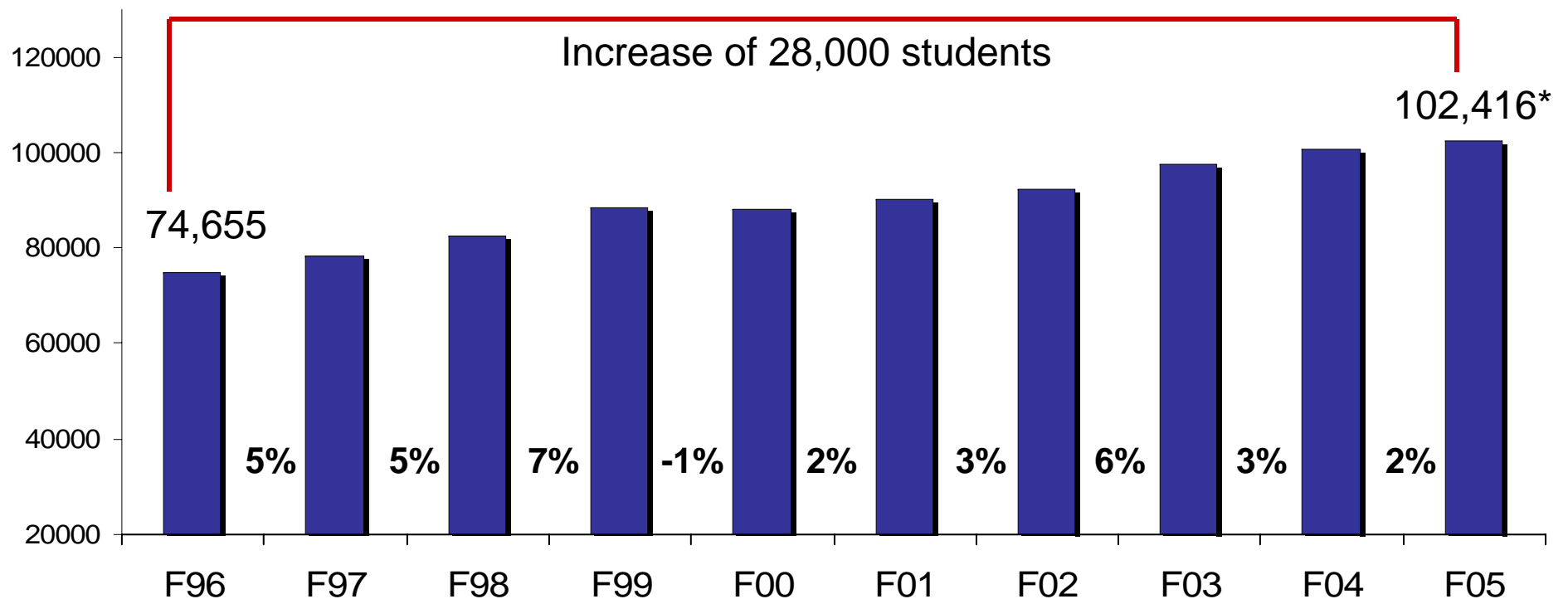


Enrollment History

Headcount enrollment increased by 2% over last Fall and 37% since Fall 1996 (annual average increase = 3.6%).

NSHE Headcount Enrollment

(Fall 1996 through Fall 2005)



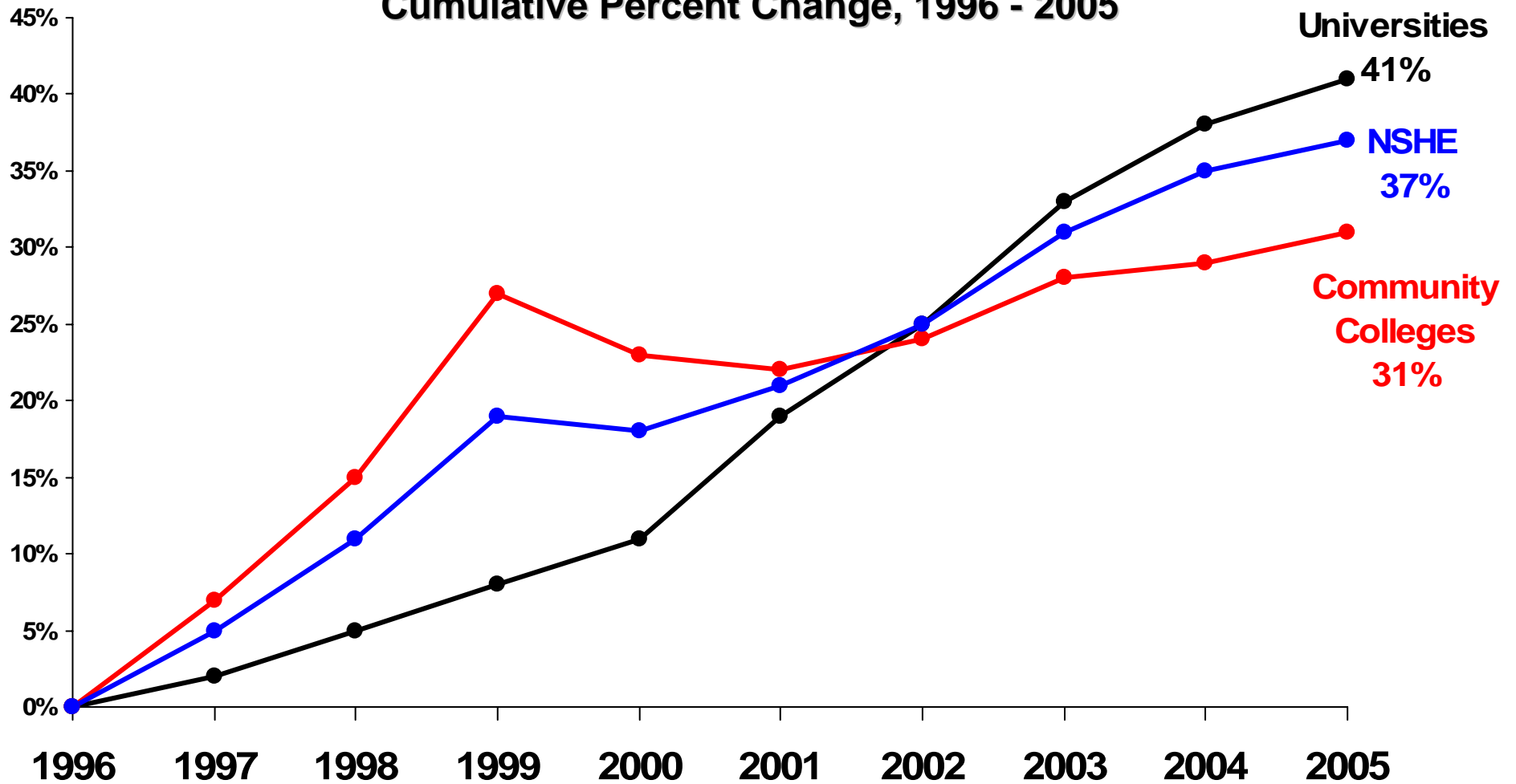
Source: NSHE Official Enrollment Report

*preliminary enrollment with end-of-semester adjustment



Enrollment History

Fall Headcount by Institution Type Cumulative Percent Change, 1996 - 2005

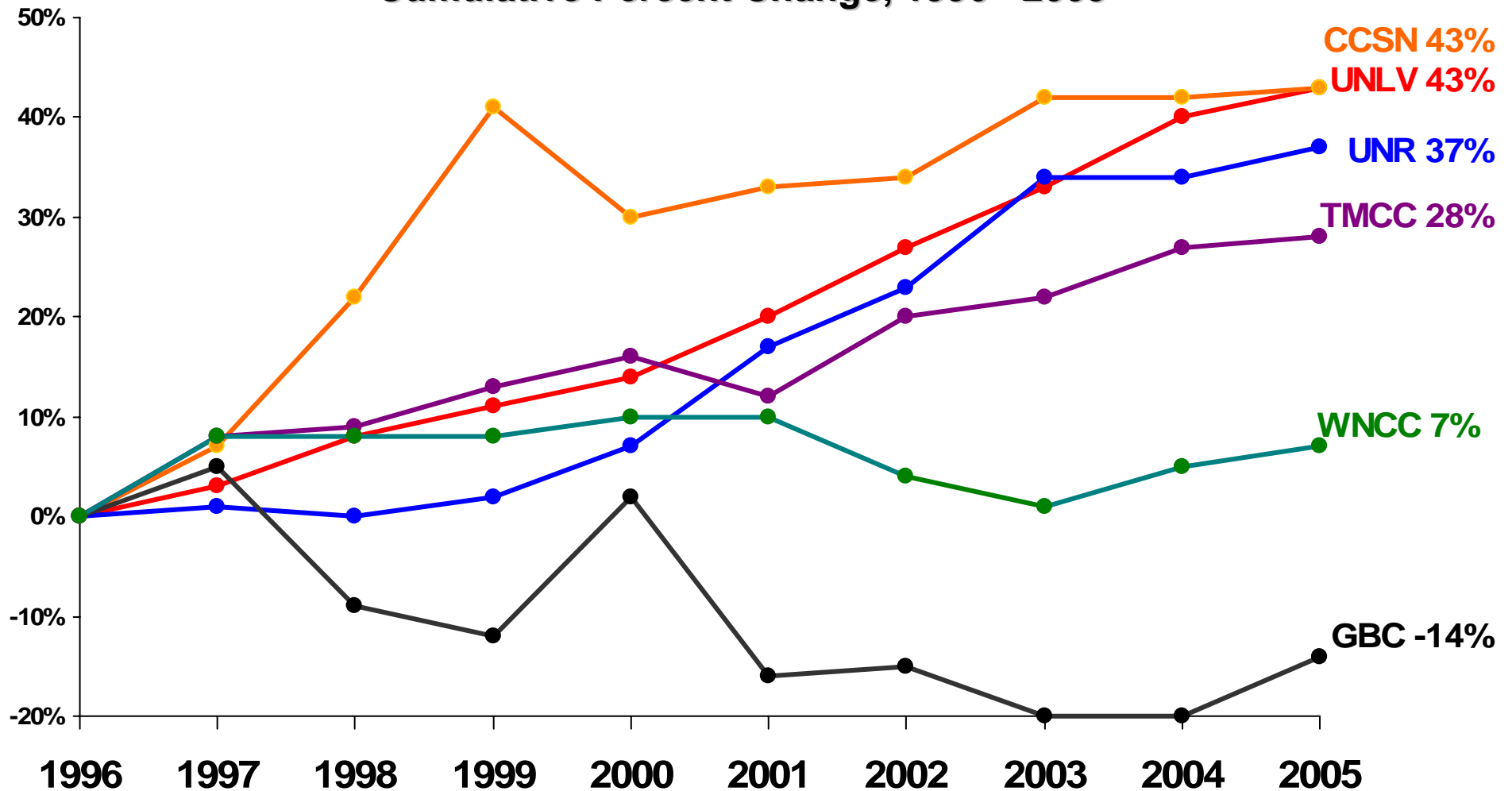


Source: NSHE Official Enrollment Report



Enrollment History

Fall Headcount by Institution Cumulative Percent Change, 1996 - 2005



Source: NSHE Official Enrollment Report



Full-time Equivalent Enrollment

Full-time Equivalent (FTE):

Measure of student workload

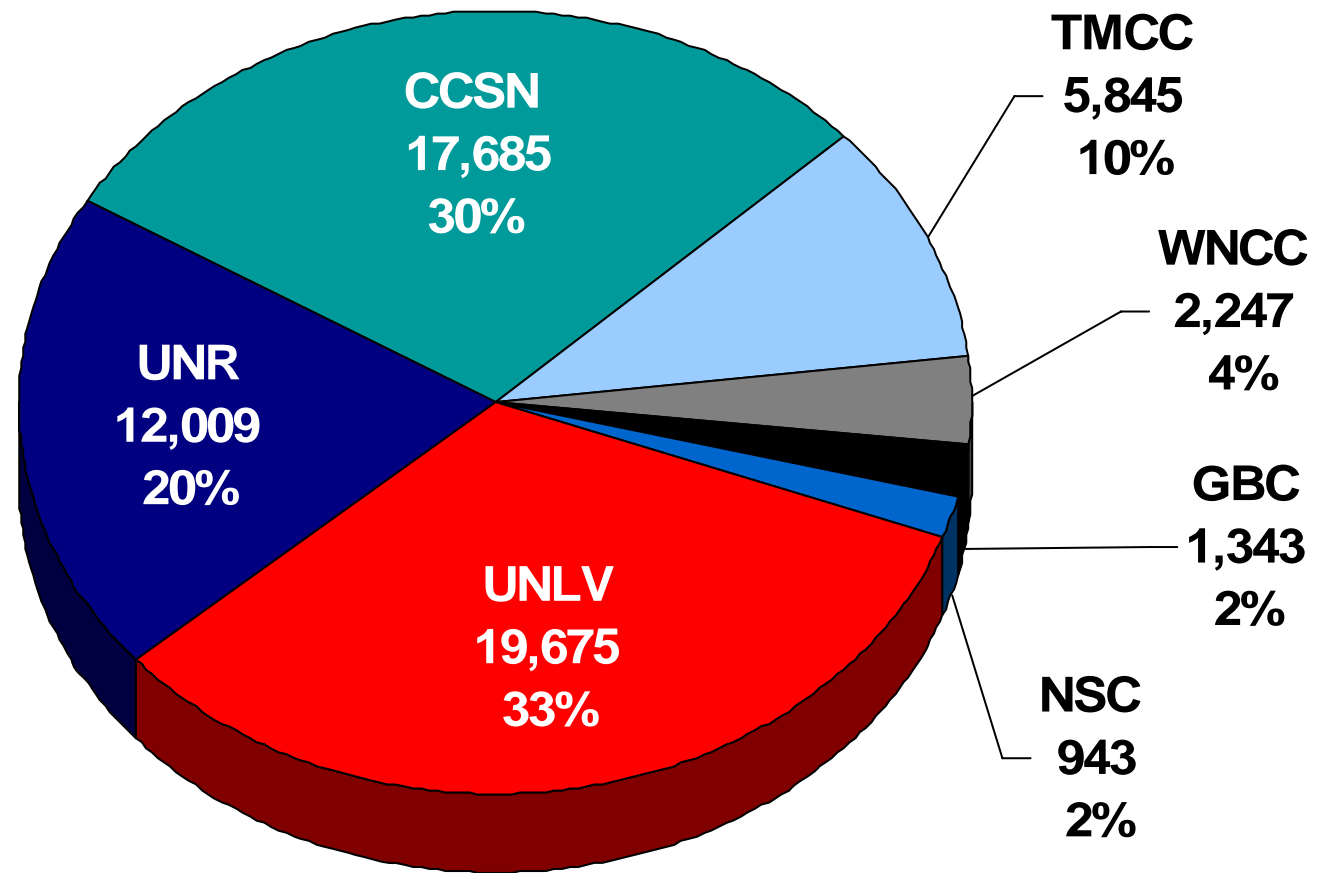
One undergrad FTE is equal to student enrollment in 15 academic credit hours per semester

Univ's makeup 53% of system FTE in 2004-05

Univ's comprised 59% of systemwide FTE in 1994-95

Student FTE Distribution 2004-05 AAFTE

Total FTE =
59,746



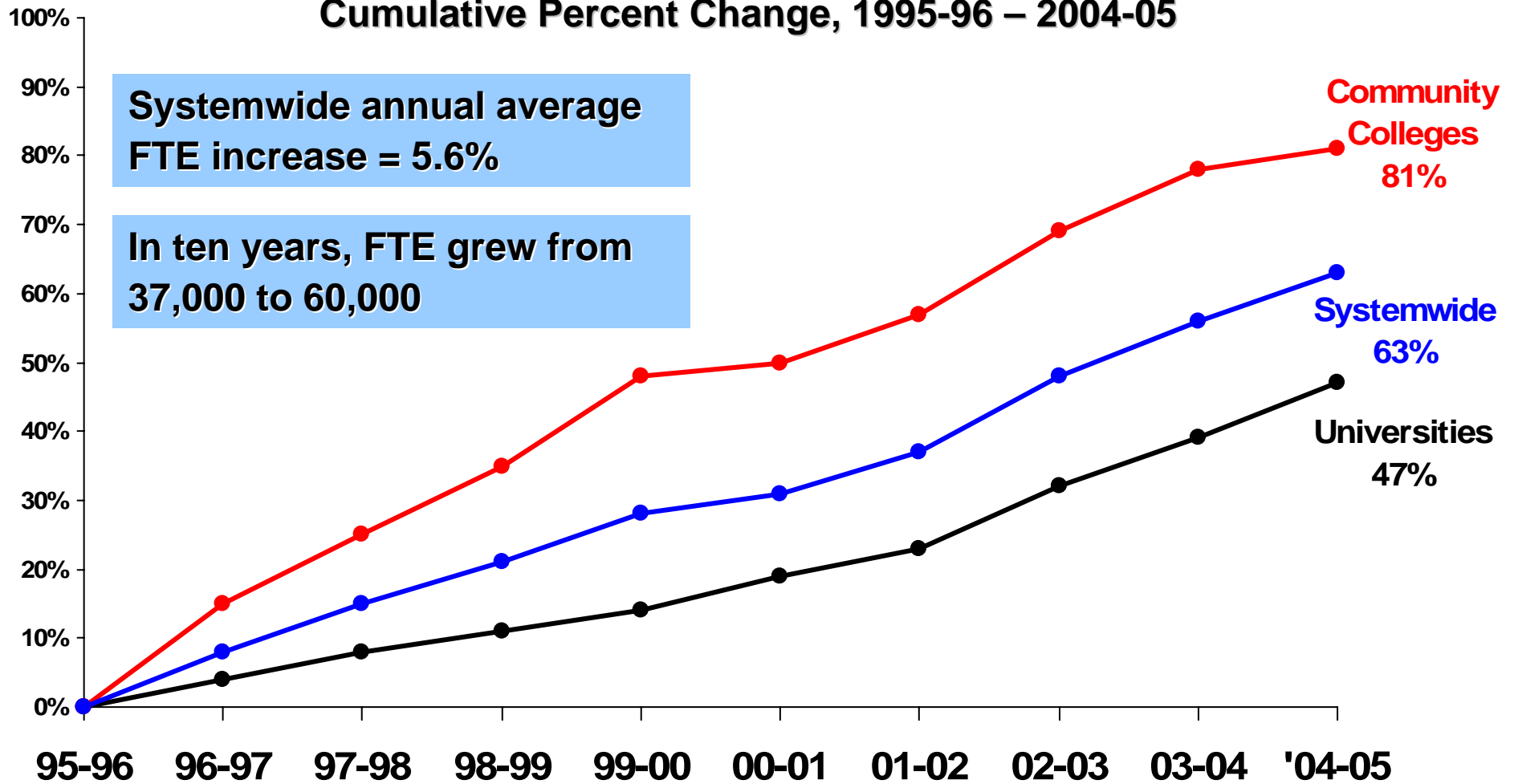
Source: NSHE Preliminary Enrollment Report



Enrollment History

Student FTE by Institution Type

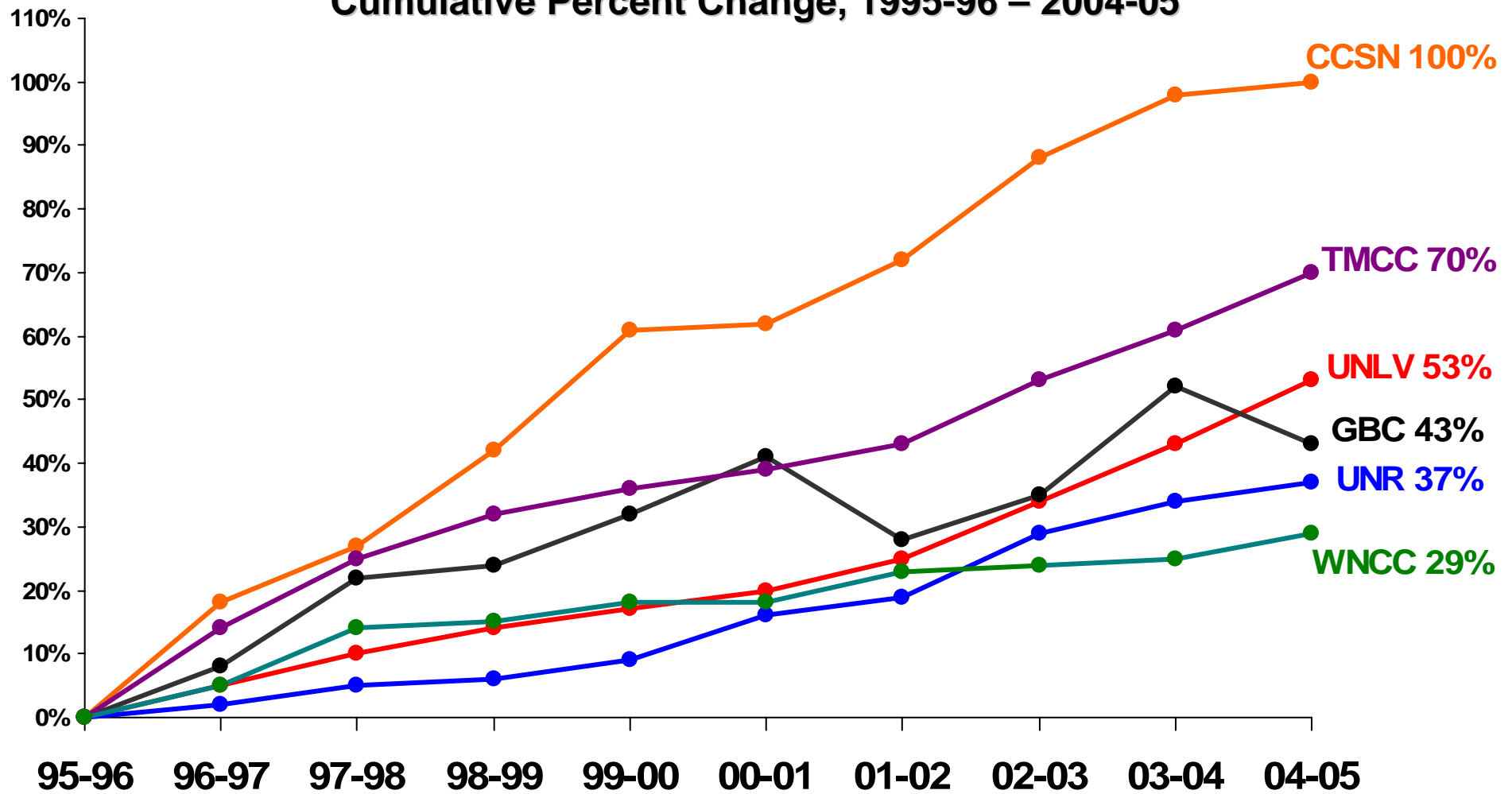
Cumulative Percent Change, 1995-96 – 2004-05





Enrollment History

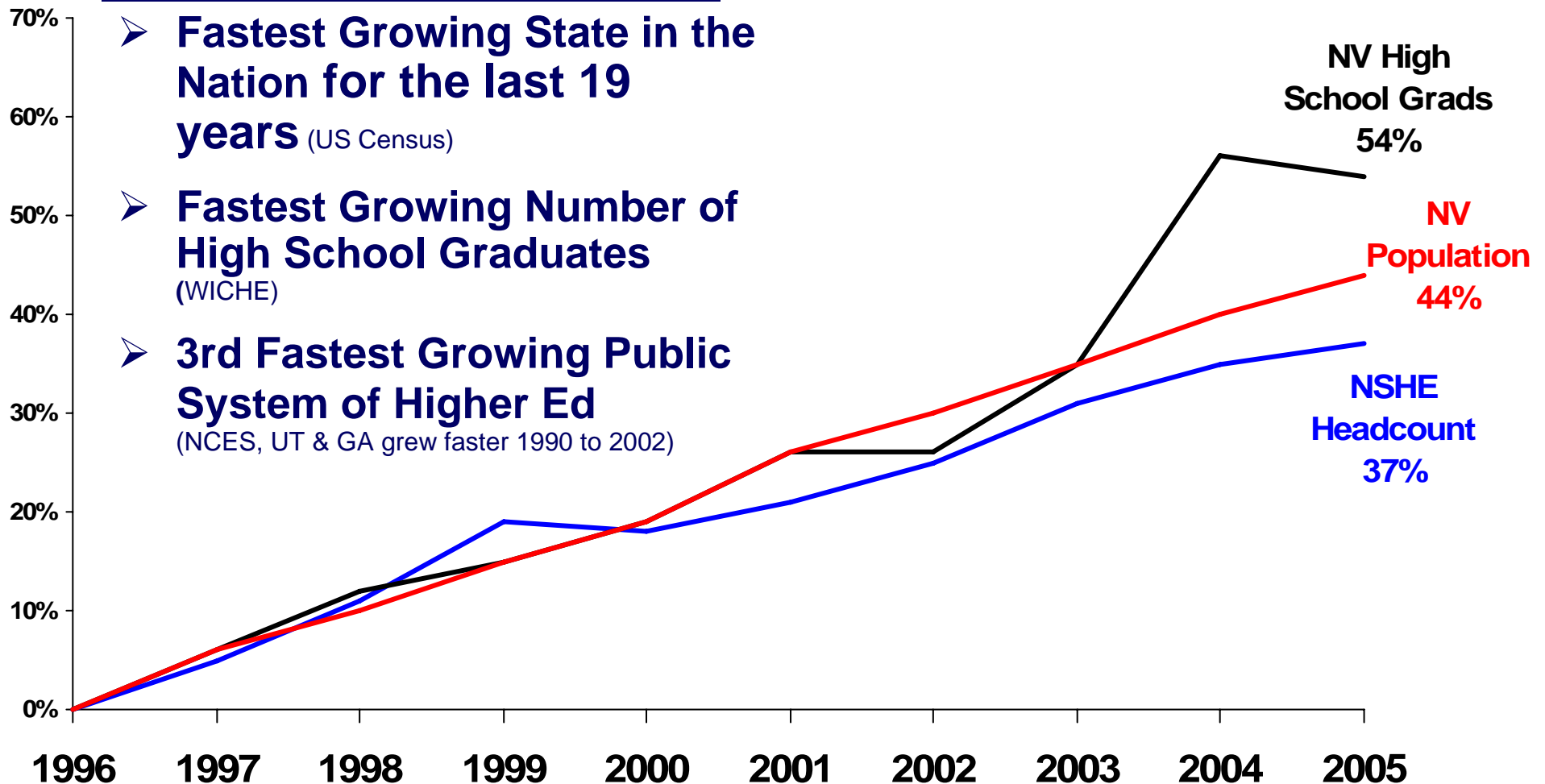
Student FTE by Institution Cumulative Percent Change, 1995-96 – 2004-05





Population & Enrollment History

1996 through 2005



Source: NSHE enrollment growth of 37% based on Official NSHE Enrollment Report, NV Population growth of 44% from State of Nevada Demographer, NV Public High School Graduate growth of 54% from WICHE (2005 grads projected)



Enrollment Plans



Enrollment Plans

- **Development of Enrollment Plans**
 - Each biennium institutions provide 10-year enrollment plans
 - Institutions are asked to provide visionary, practical and attainable plans
 - Also asked to consider the following factors
 - actual and projected rates of Nevada high school graduates
 - population growth in local service areas
 - historical and projected participation rates

- **Uses of Enrollment Plans**
 - driver in space needs calculations
 - supporting information in development of capital appropriations
 - method for developing systemwide 10-yr projections

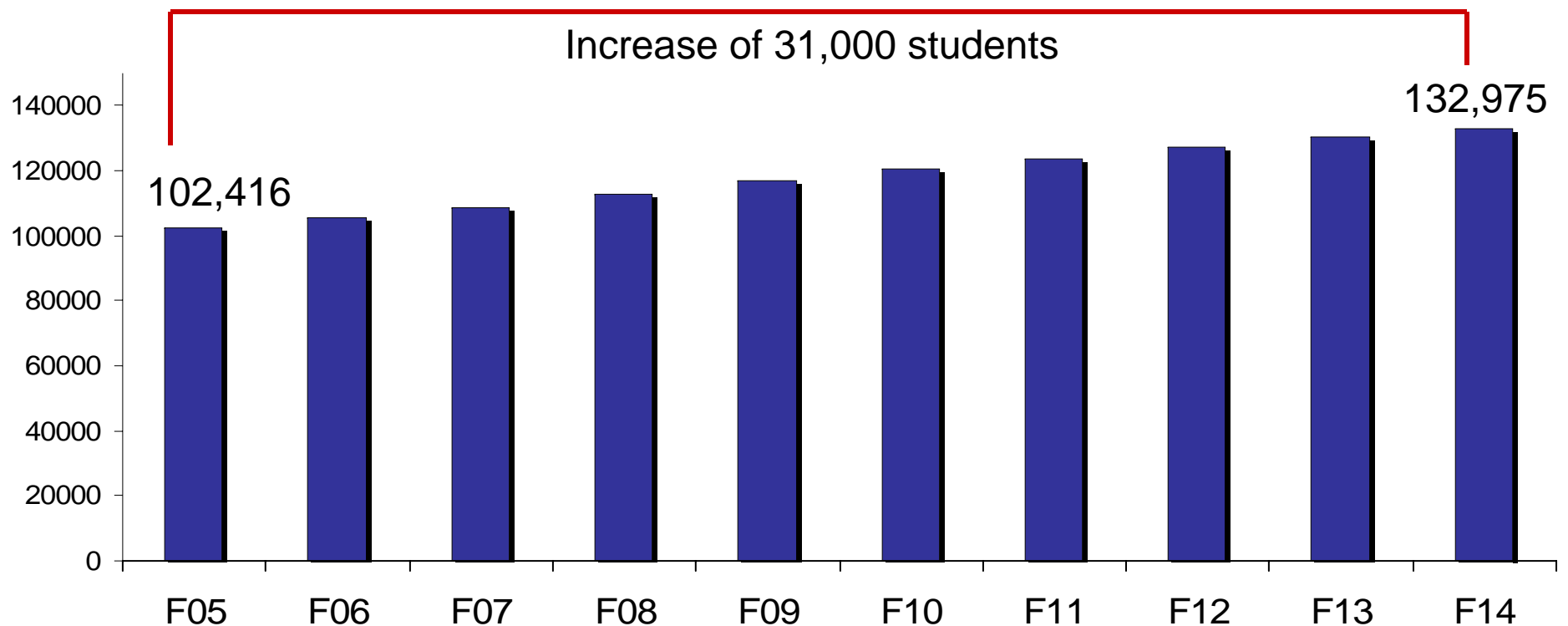


Projected Enrollment

Systemwide headcount enrollment is projected to increase by 30% in the next ten years (annual average increase = 2.9%).

Projected NSHE Headcount Enrollment

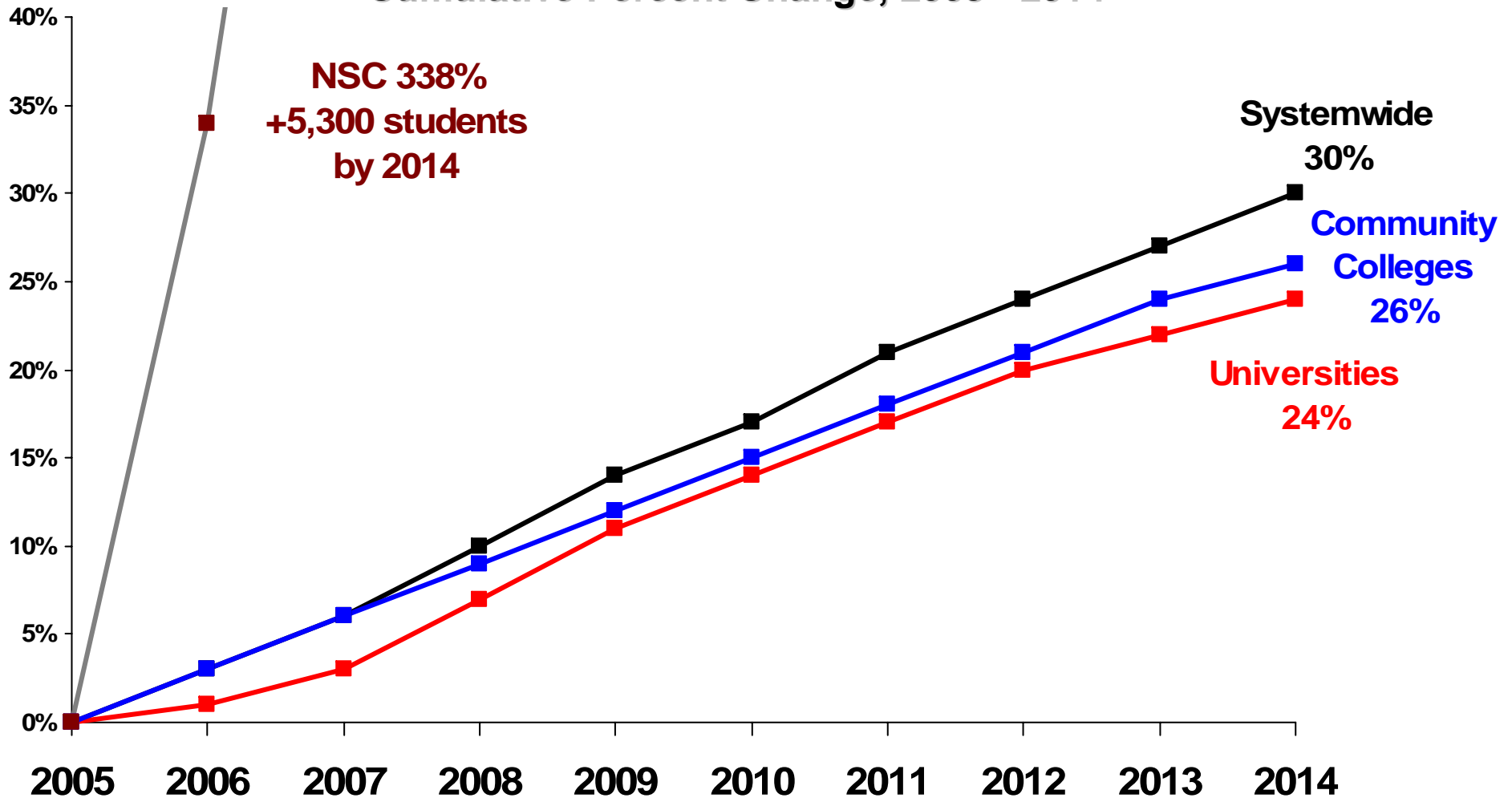
(Fall 2005 through Fall 2014)





Enrollment Plans

Fall Headcount by Institution Type Cumulative Percent Change, 2005 - 2014

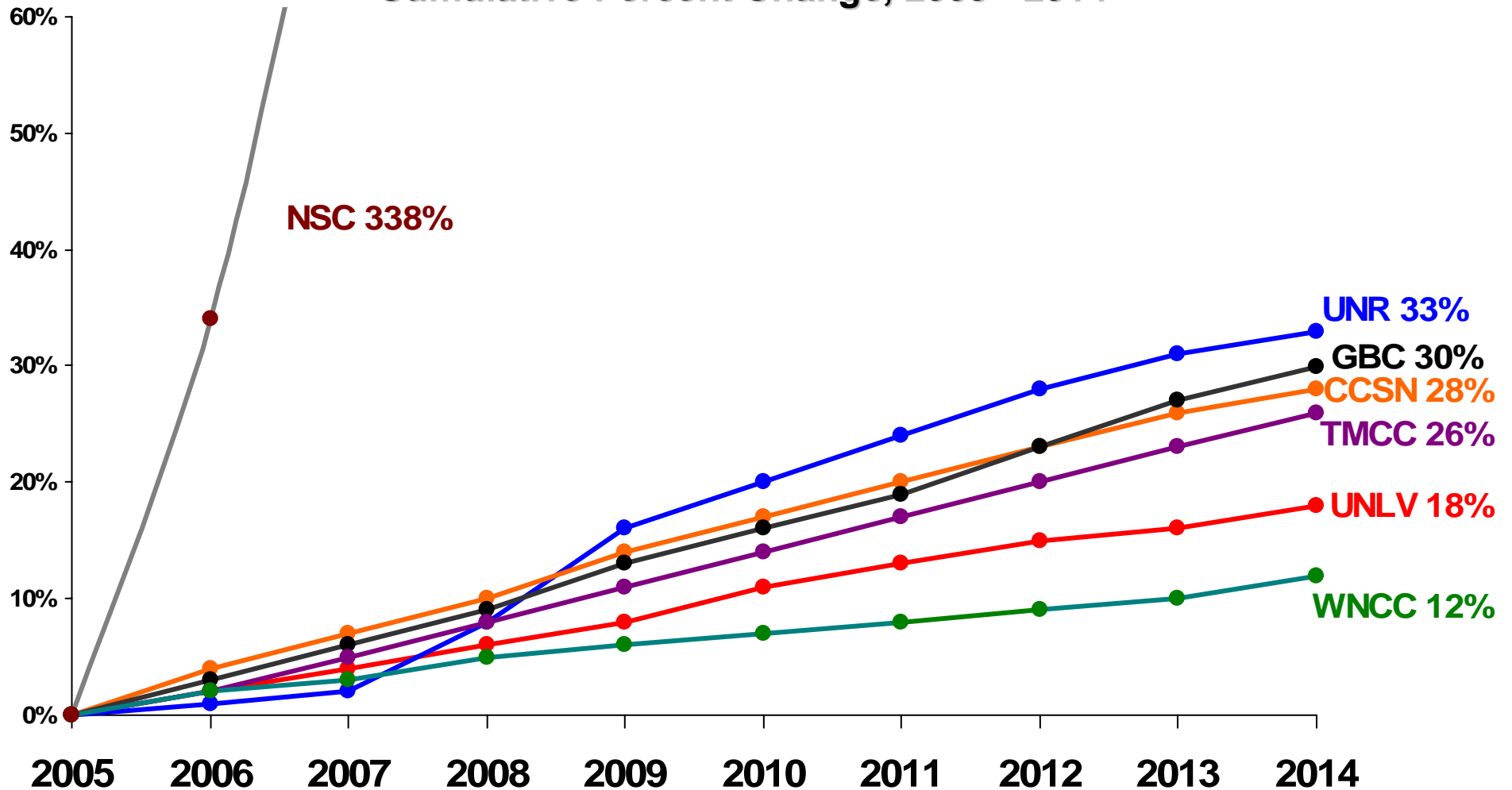


Source: NSHE Enrollment Plans 2005-06 thru 2014-15



Enrollment Plans

Fall Headcount by Institution Cumulative Percent Change, 2005 - 2014



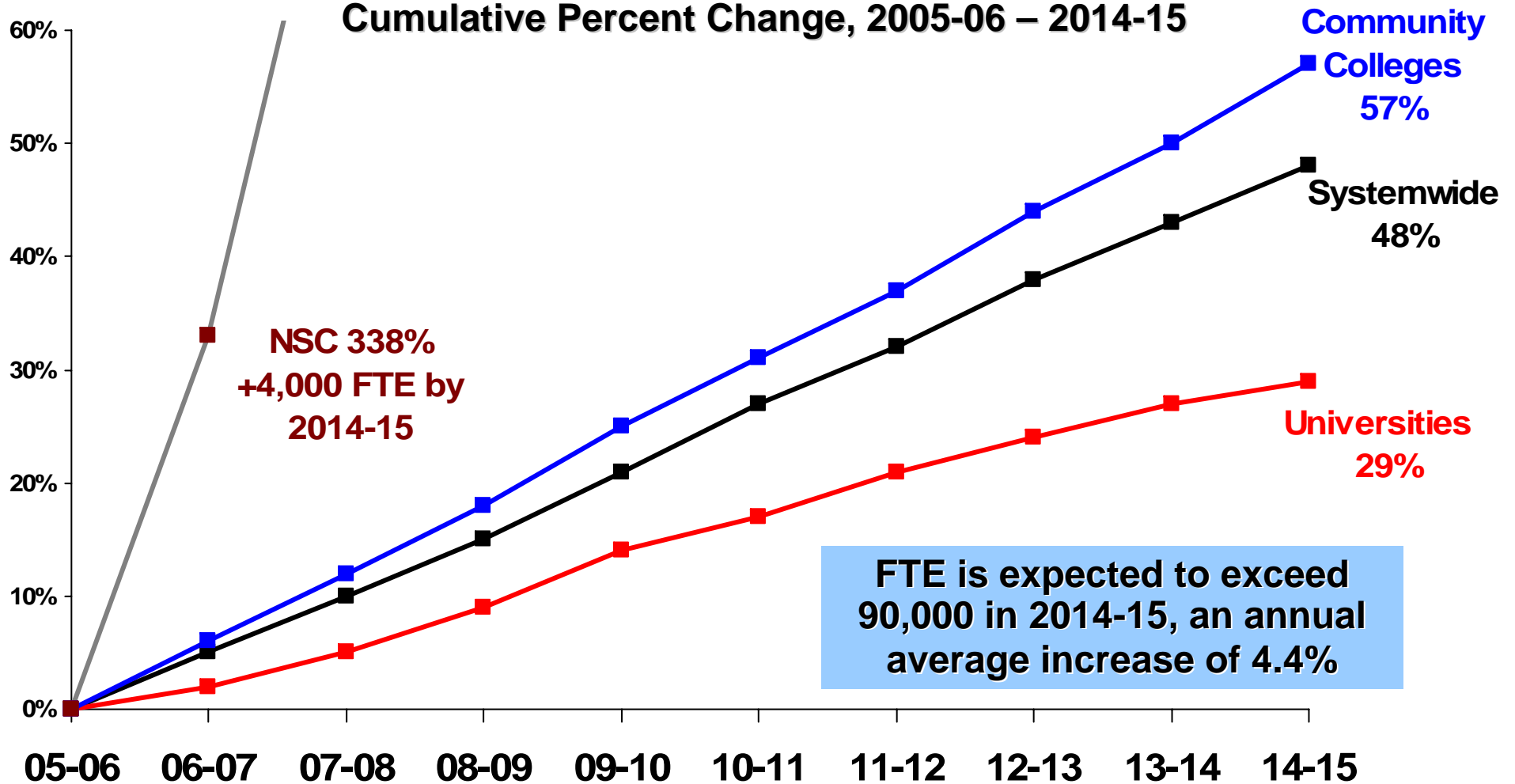
Source: NSHE Enrollment Plans 2005-06 thru 2014-15



Enrollment Plans

Student FTE by Institution Type

Cumulative Percent Change, 2005-06 – 2014-15

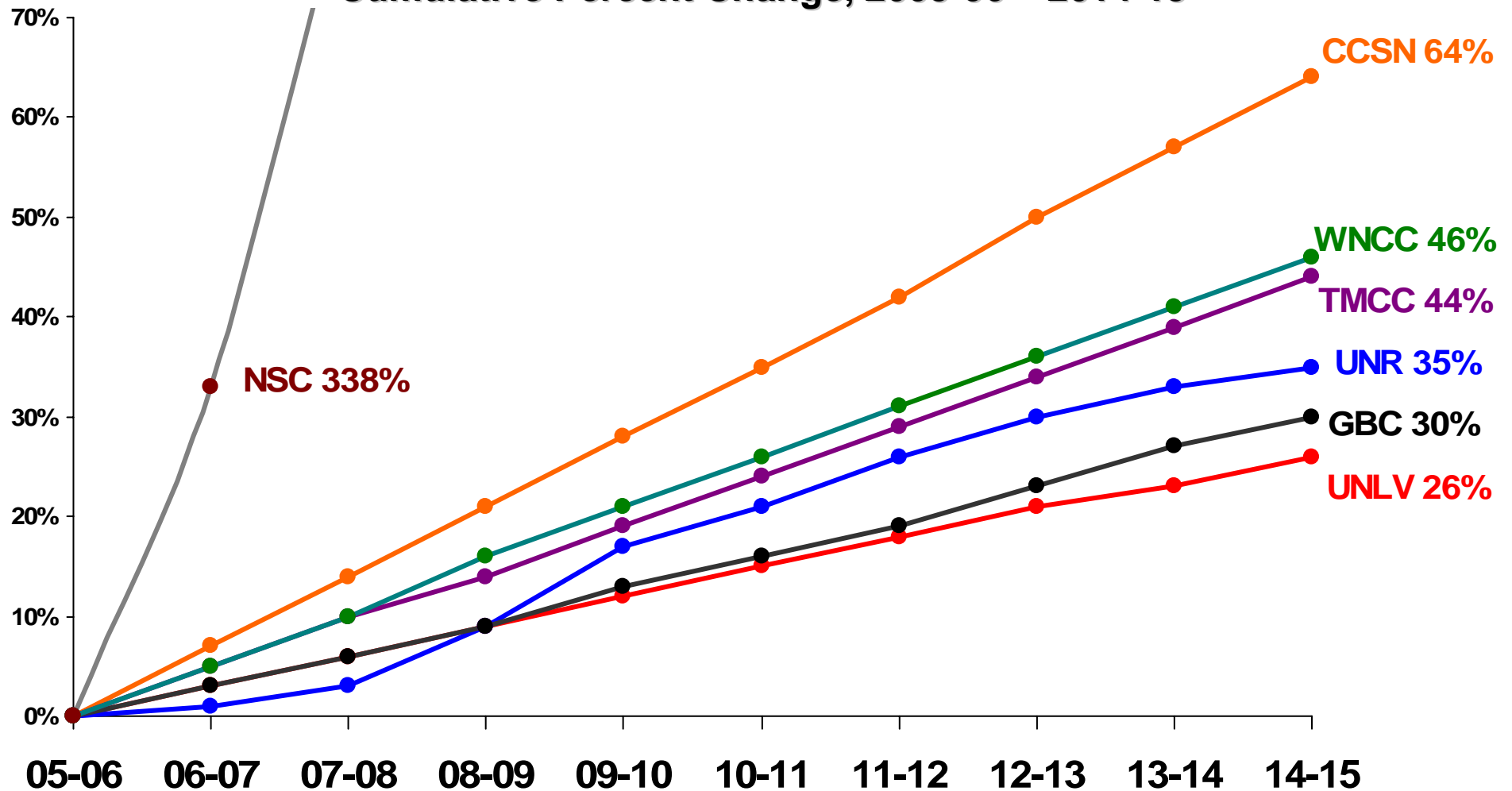




Enrollment Plans

Student FTE by Institution

Cumulative Percent Change, 2005-06 – 2014-15

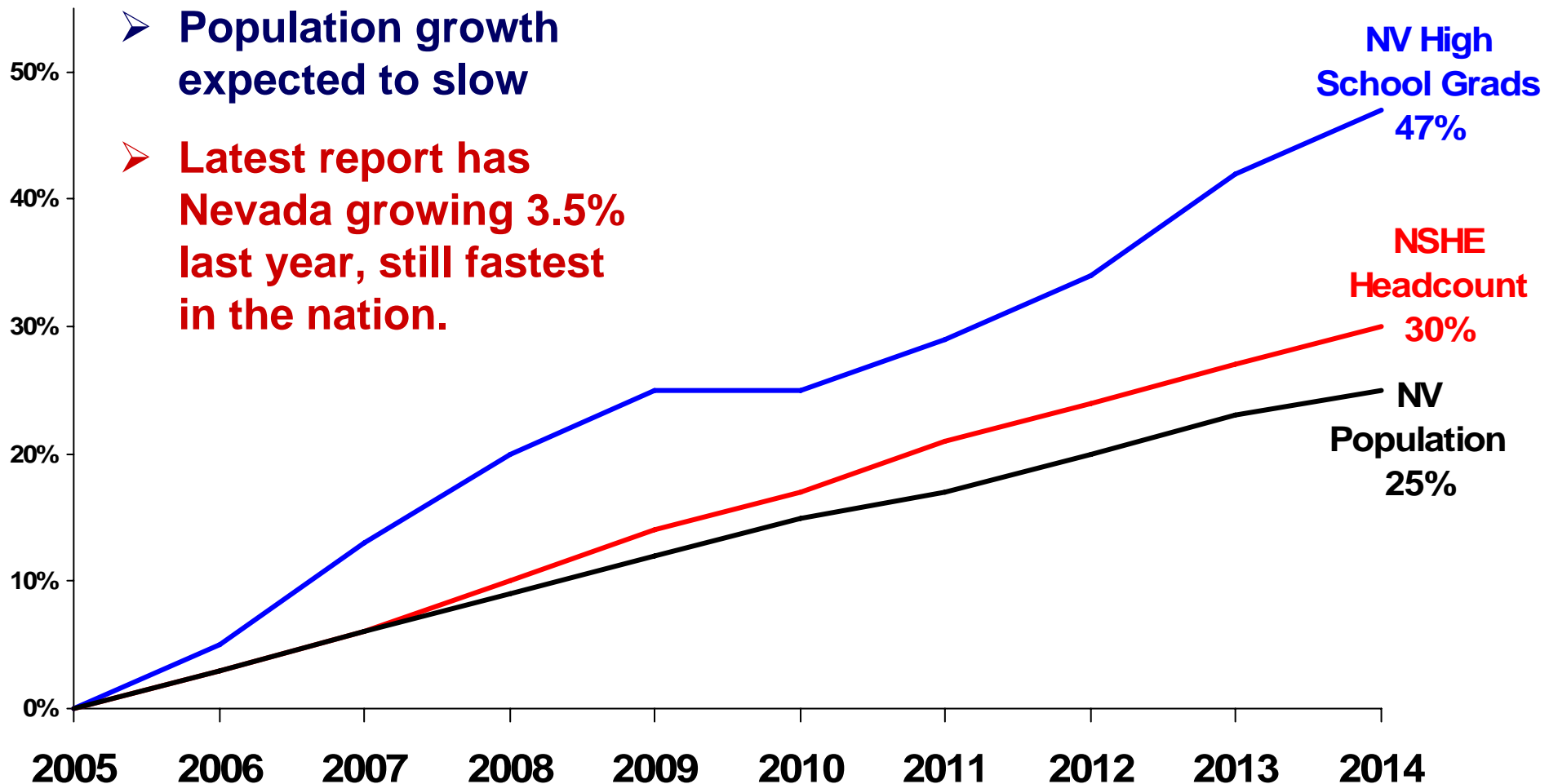


Source: NSHE Enrollment Plans 2005-06 thru 2014-15



Population & Enrollment Projections

2005 through 2014



Source: NSHE enrollment growth of 30% based on Enrollment Plans 2005-06, NV Population growth of 25% projected by State of Nevada Demographer, NV Public High School Graduate growth of 47% projected by WICHE.



SUMMARY



Summary

- **Looking Back Ten Years (1996 – 2005):**
 - NSHE headcount grew by 37%, equating to an increase of 28,000 students.
 - NSHE student FTE increased by 63% for a total of 23,000 FTE.
 - FTE growth outpacing headcount was a common trend throughout the System.
 - CCSN experienced the most growth (headcount 43%, FTE 100%).
 - Growth of NSHE headcount enrollment (37%) was outpaced by both Nevada's population (54%), as well as the increase in high school graduates (44%).



Summary

- **Looking Forward Ten Years (2005 – 2014):**
 - NSHE Headcount projected to grow by 30,000 students (30%).
 - NSHE Student FTE projected to increase by 63% (identical to 1996-2005 growth rate).
 - NSC plans for most aggressive growth, followed by the community colleges (57% increase in FTE projected)
 - Nevada high school graduates are expected to increase by approximately 50%, outpacing the projected growth in headcount for the NSHE.
 - Nevada population is expected to grow at a slower rate (25%), although recent population increases suggest otherwise.



APPENDIX