



**Nevada  
System of  
Higher  
Education**

# **NSHE Enrollment Planning**

---

**Information to support the preparation  
of the 2009-2011 biennial budget**

February 2008

Prepared by the  
NSHE Office of Academic & Student Affairs



# Report Objective

Provide information to support decision making in the preparation of the 2009-2011 biennial budget

- NSHE Enrollment History
- Enrollment Plans (2007-08 thru 2016-17)
- Population Trends & Demographics





# NSHE Enrollment History



# Headcount Enrollment

## Headcount Enrollment:

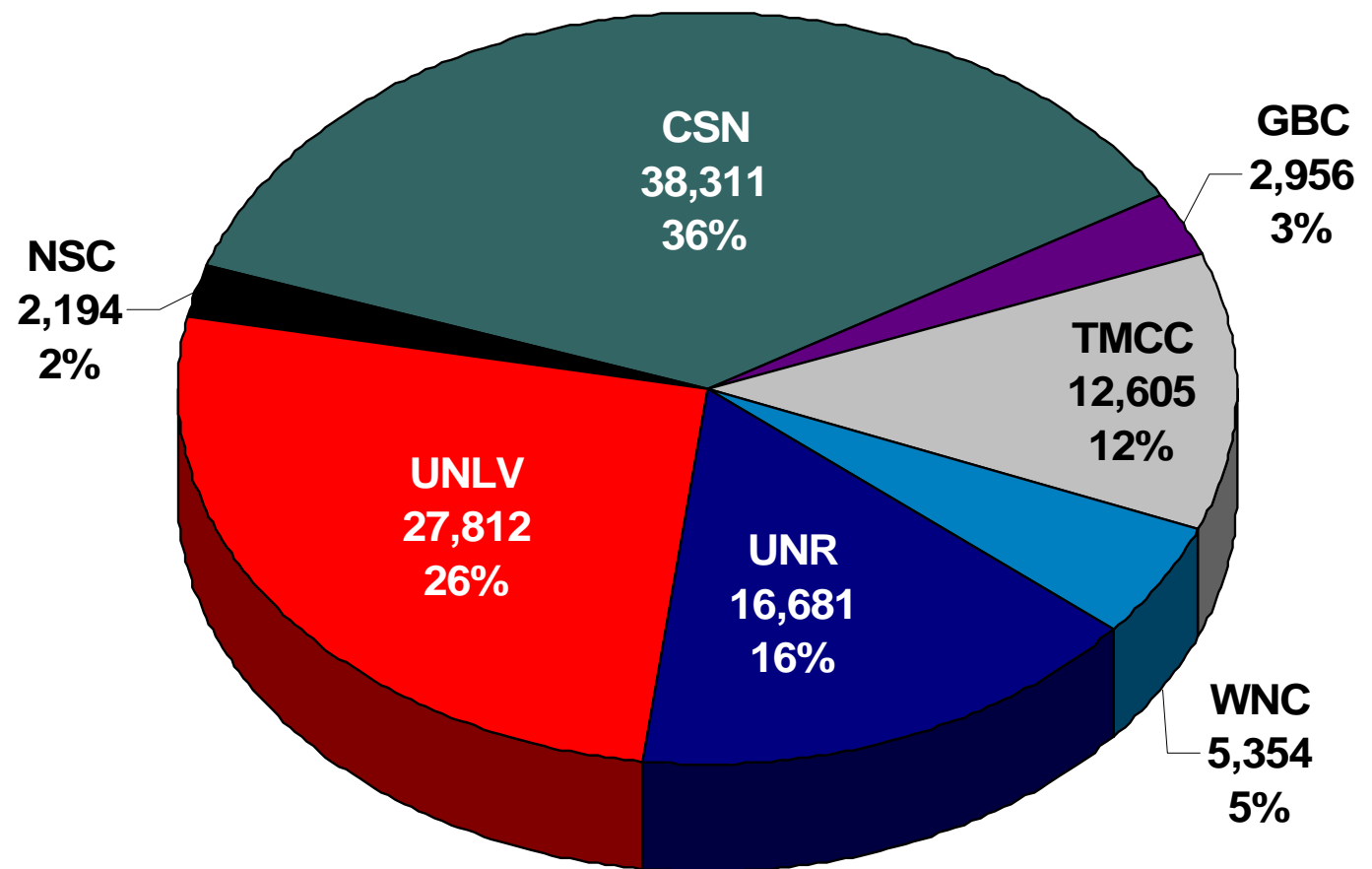
students enrolled in at least one credit course

Comm. Colleges comprised 56% of all headcount enrollment in Fall 2007

In Fall 1995, Comm. Colleges comprised 55% of all headcount enrollment

## Student Headcount Distribution

Fall 2007 (Preliminary)



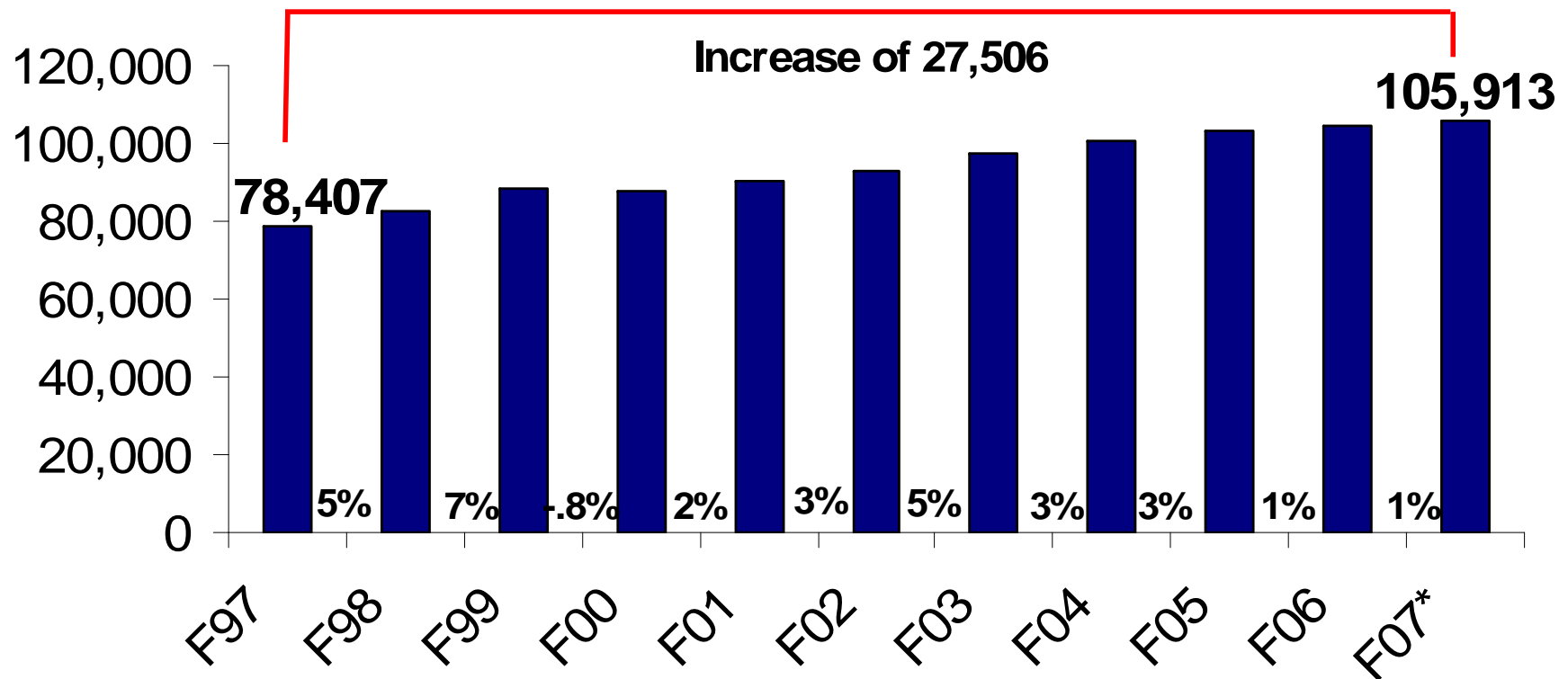
Source: NSHE Preliminary Enrollment Report



# Enrollment History

Headcount enrollment increased by 1% from Fall 2006 to Fall 2007 and 35% since Fall 1997 (annual avg increase = 3.3%).

**NSHE Headcount Enrollment**  
(Fall 1997 through Fall 2007)



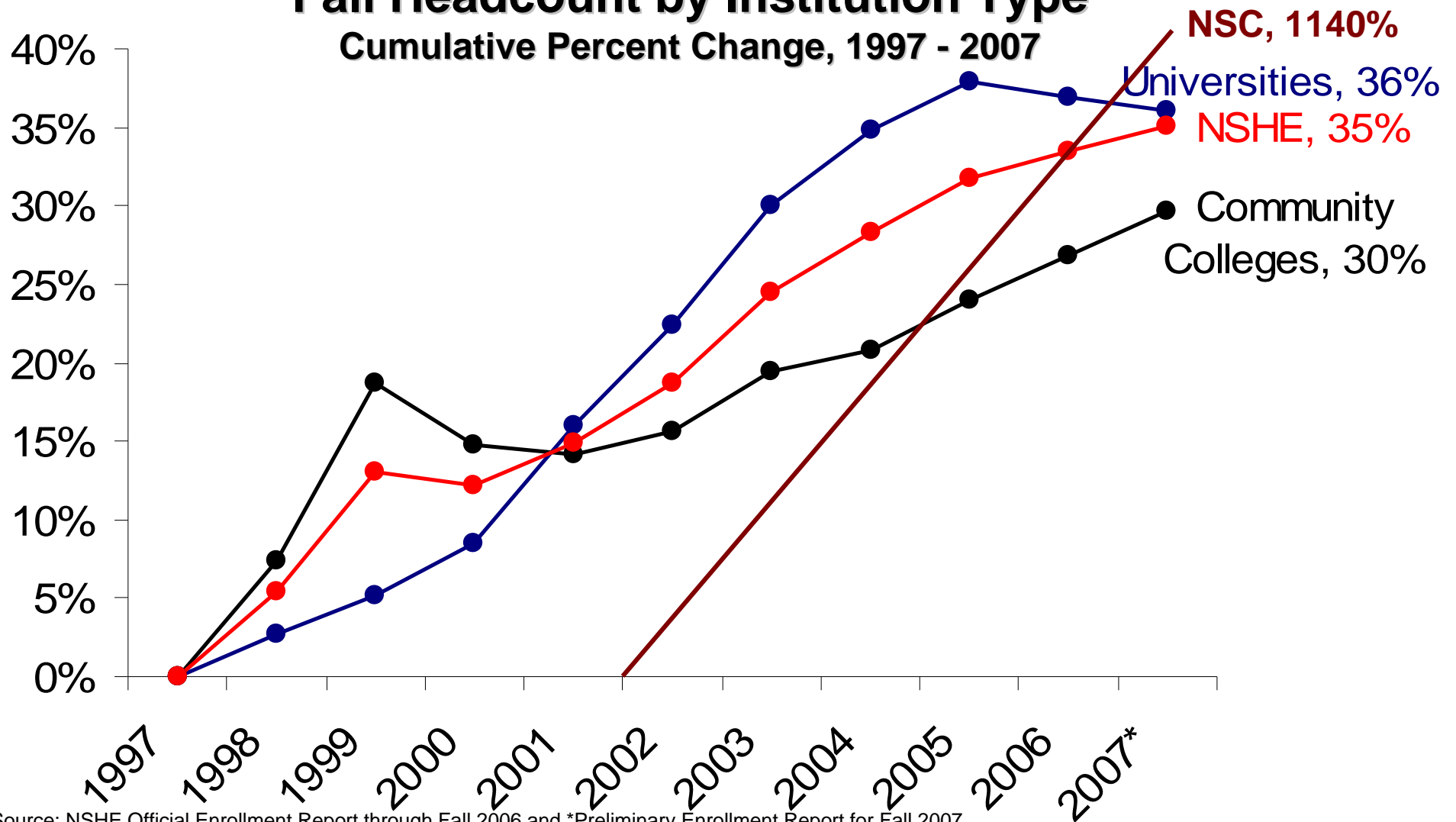
Source: NSHE Official Enrollment Report through Fall 2006 and \*Preliminary Enrollment Report for Fall 2007  
From Fall 2006 forward, remedial enrollment is excluded from university headcount



# Enrollment History

## Fall Headcount by Institution Type

Cumulative Percent Change, 1997 - 2007



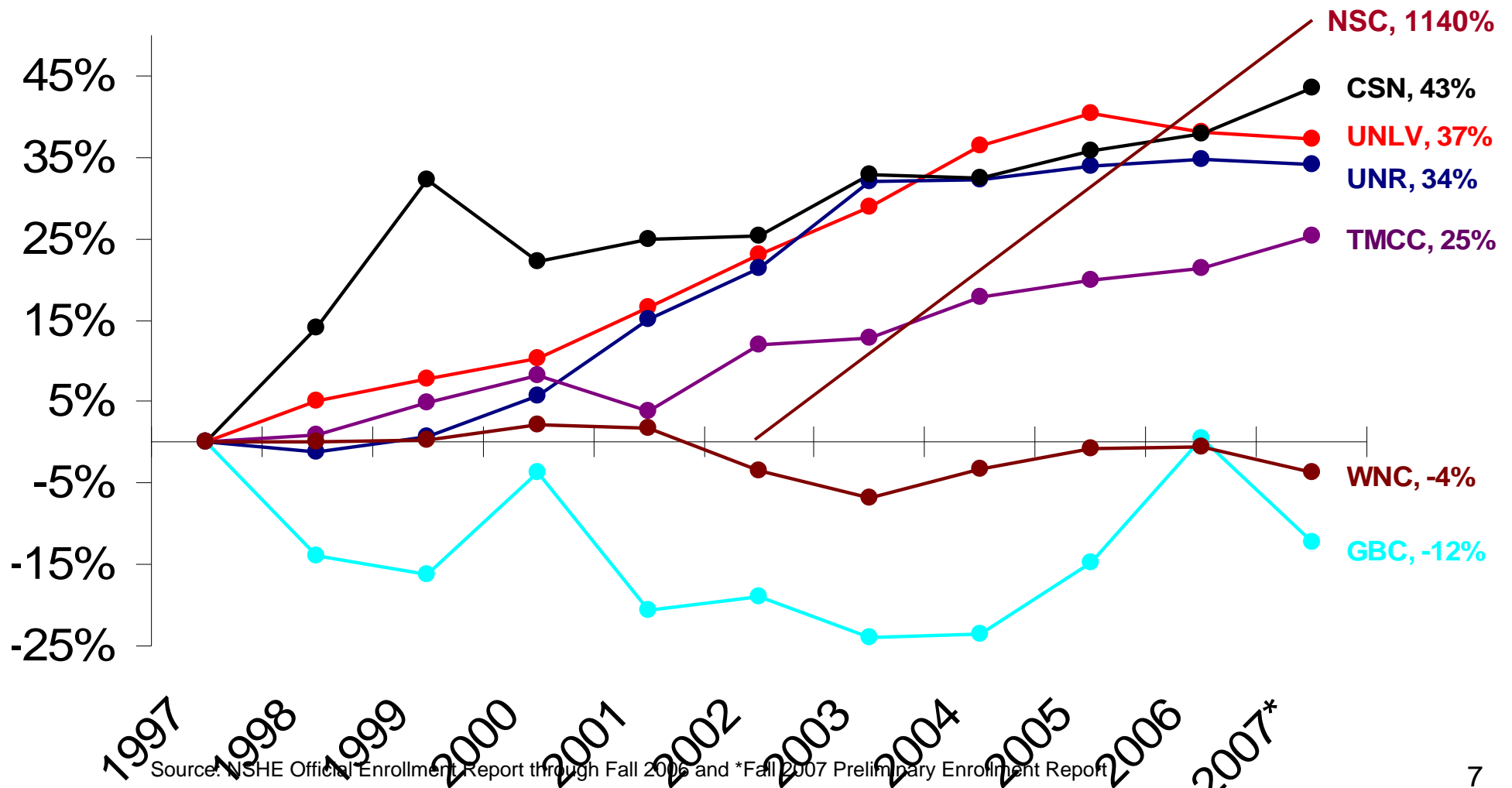
Source: NSHE Official Enrollment Report through Fall 2006 and \*Preliminary Enrollment Report for Fall 2007.

From Fall 2006 forward, remedial enrollment is excluded from university headcount.



# Enrollment History

## Fall Headcount by Institution Cumulative Percent Change, 1997 - 2007



Source: NSHE Official Enrollment Report through Fall 2006 and \*Fall 2007 Preliminary Enrollment Report



# Full-time Equivalent Enrollment

## Full-time Equivalent (FTE):

Measure of student workload

One undergrad FTE is equal to student enrollment in 15 academic credit hours per semester

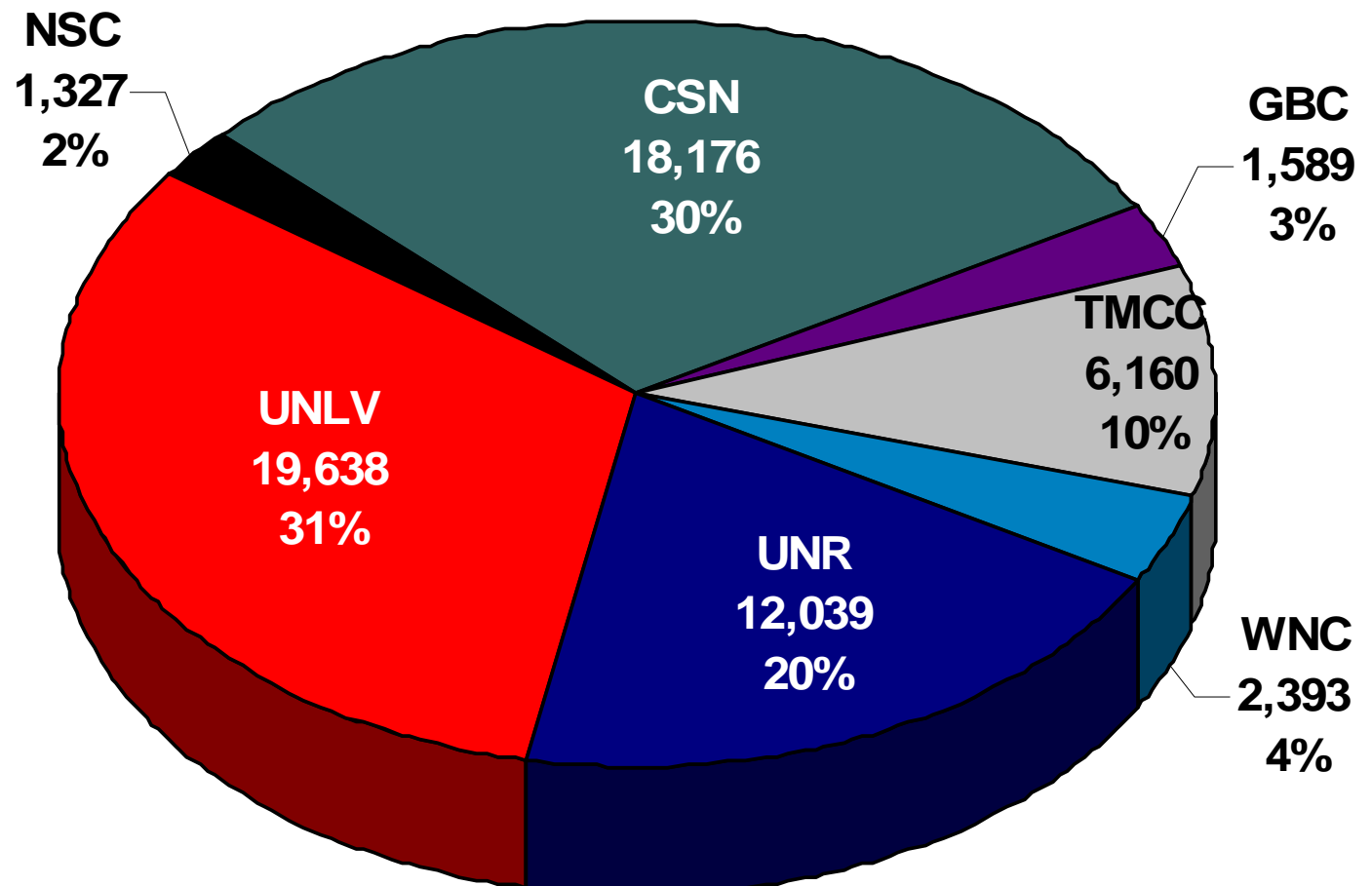
Universities makeup 51% of system FTE in 2006-07

Universities comprised 56% of systemwide FTE in 1997-98

## Student FTE Distribution

2006-07 AAFTE

Total FTE = 61,323\*



Source: NSHE Final Enrollment Report

\*Note: Individual campus FTE does not equal NSHE FTE due to rounding.

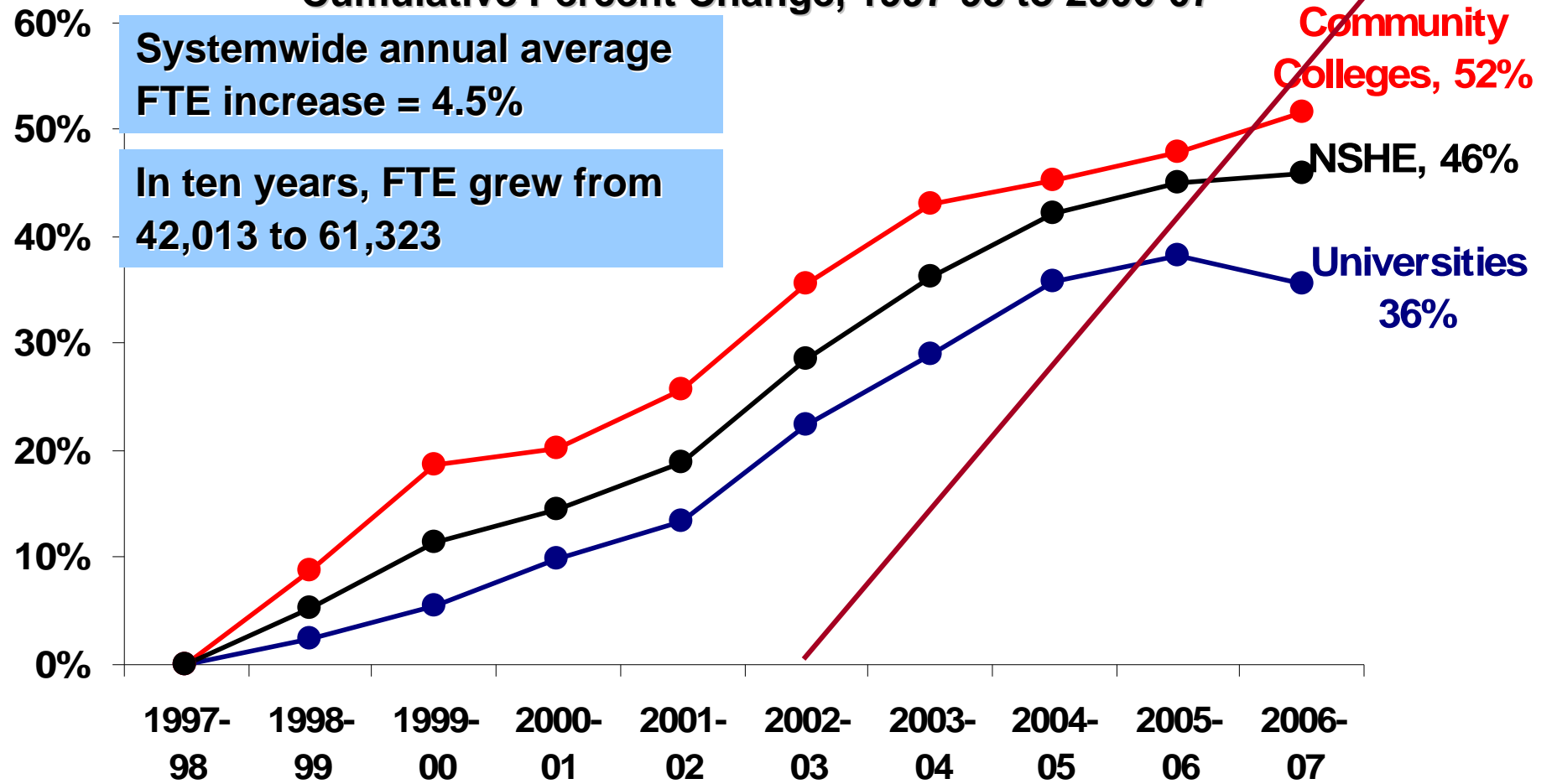




# Enrollment History

## Student FTE by Institution Type

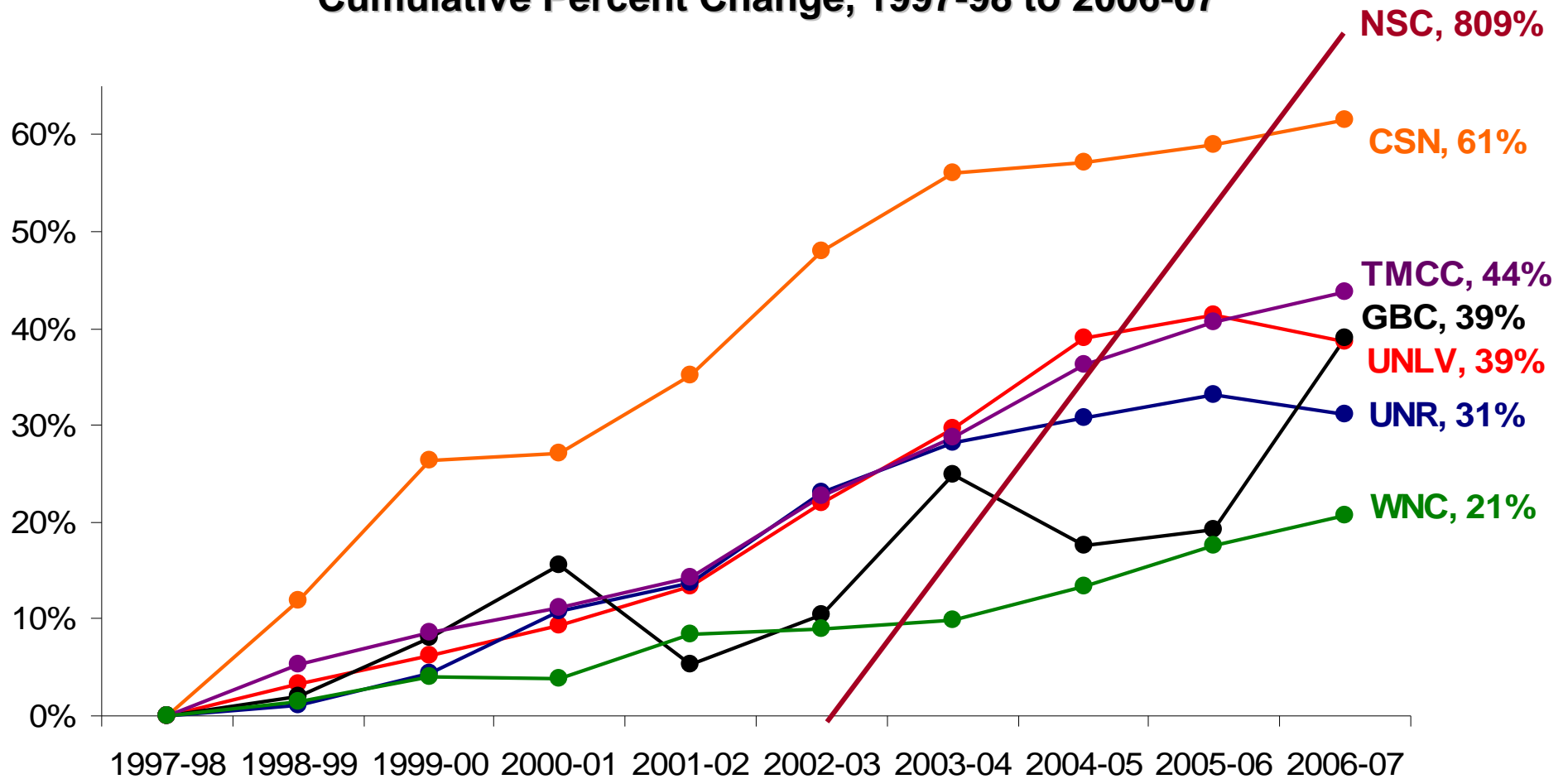
Cumulative Percent Change, 1997-98 to 2006-07





# Enrollment History

## Student FTE by Institution Cumulative Percent Change, 1997-98 to 2006-07





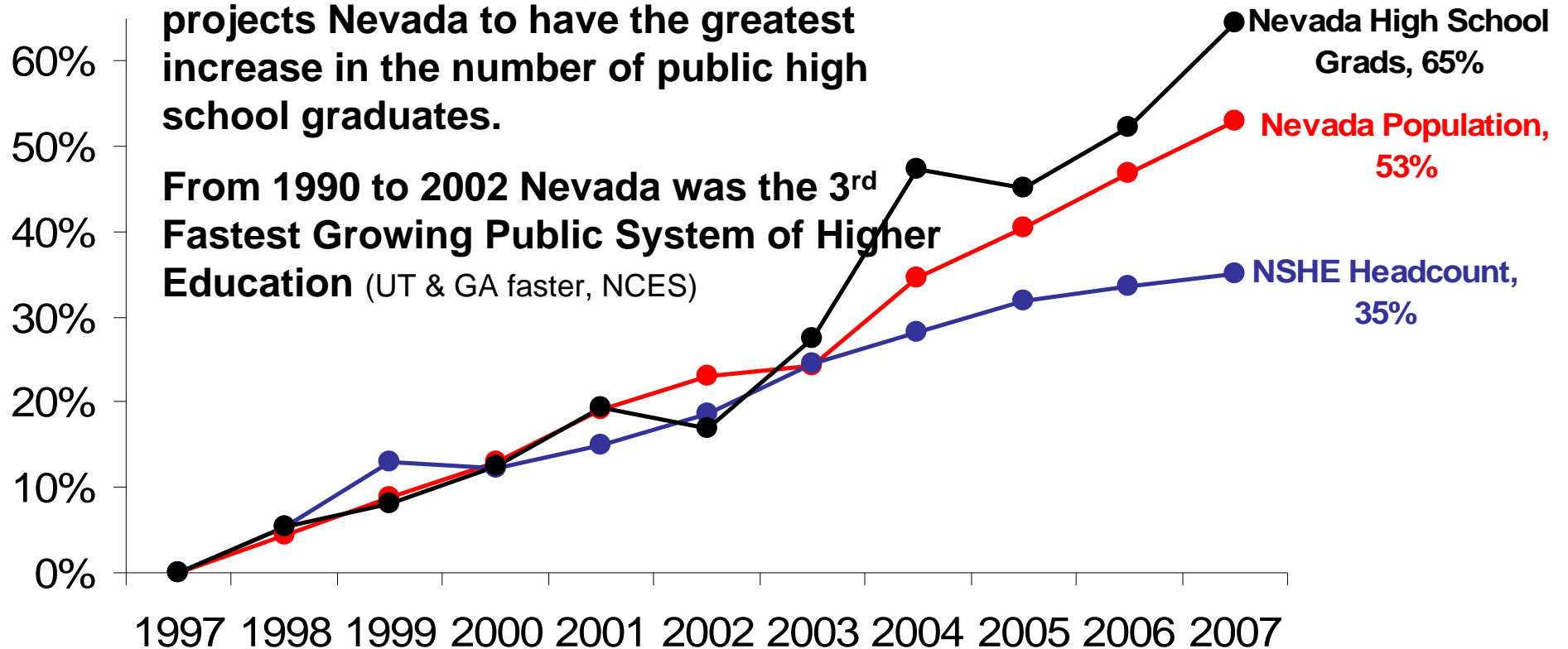
# Population & Enrollment History

## 1997 through 2007

Nevada has been the fastest growing state 20 out of 21 years.

From 2003-04 through 2016-17, NCES projects Nevada to have the greatest increase in the number of public high school graduates.

From 1990 to 2002 Nevada was the 3<sup>rd</sup> Fastest Growing Public System of Higher Education (UT & GA faster, NCES)



Source: NSHE enrollment growth based on Official NSHE Enrollment Report, NV Population growth from State of Nevada Demographer, NV Public High School Graduate growth from WICHE (2007 grads projected), NCES Projection from Projections of Education Statistics to 2016.



# Enrollment Plans



# Enrollment Plans

- **Development of Enrollment Plans**
  - Each biennium institutions provide 10-year enrollment plans
  - Institutions are asked to provide visionary, practical, and attainable plans
  - Also asked to consider the following factors
    - actual and projected rates of Nevada high school graduates;
    - population growth in local service areas; and
    - historical and projected participation rates.
  
- **Uses of Enrollment Plans**
  - driver in space needs calculations;
  - supporting information in development of capital appropriations; and
  - method for developing comparable 10-yr projections systemwide.

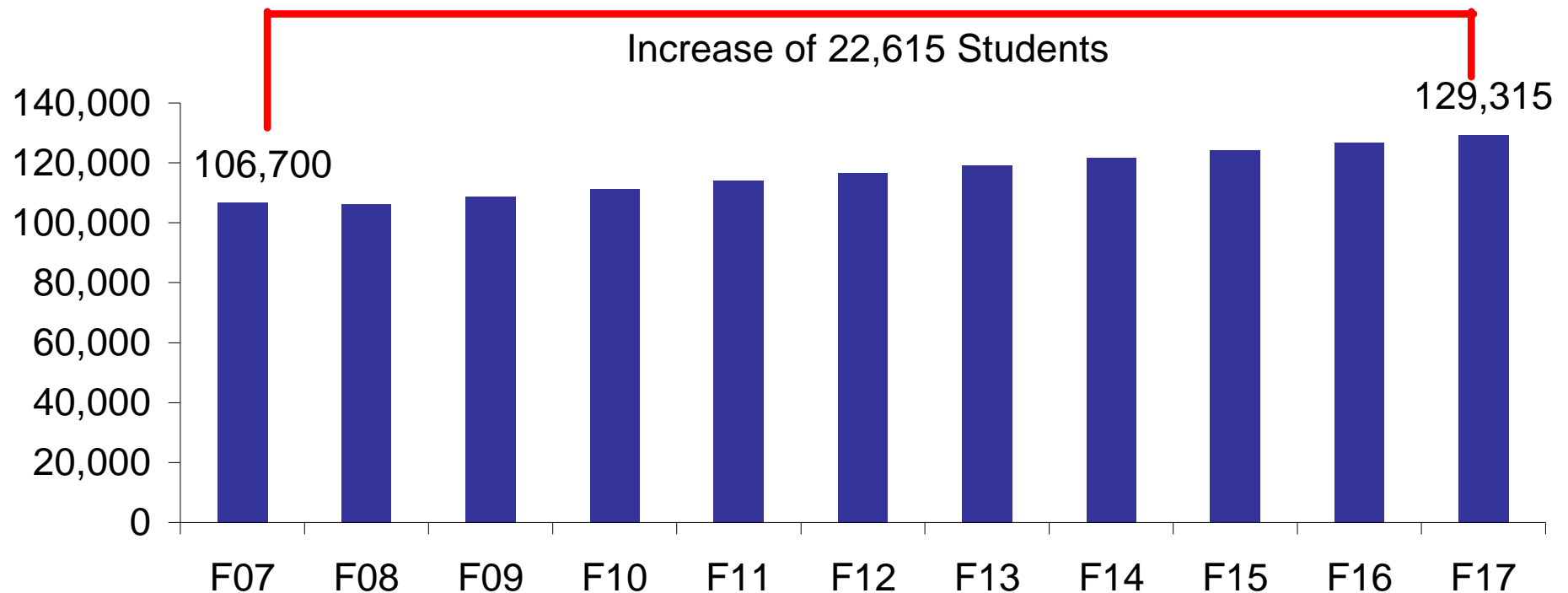


# Projected Enrollment

Systemwide headcount enrollment is projected to increase by 21% in the next ten years (annual average increase = 1.9%).

## Projected NSHE Headcount Enrollment

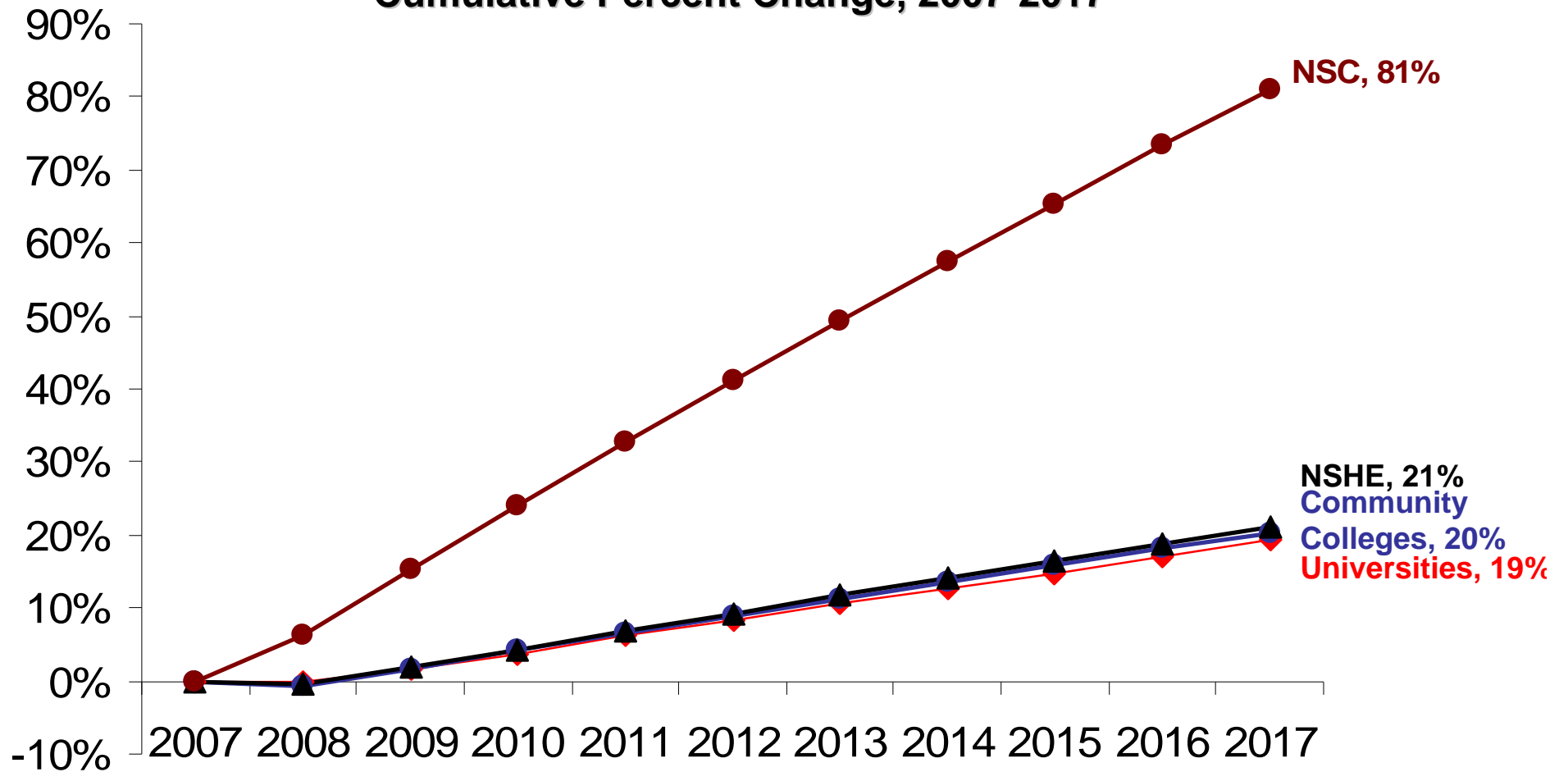
Fall 2007 through Fall 2017





# Enrollment Plans

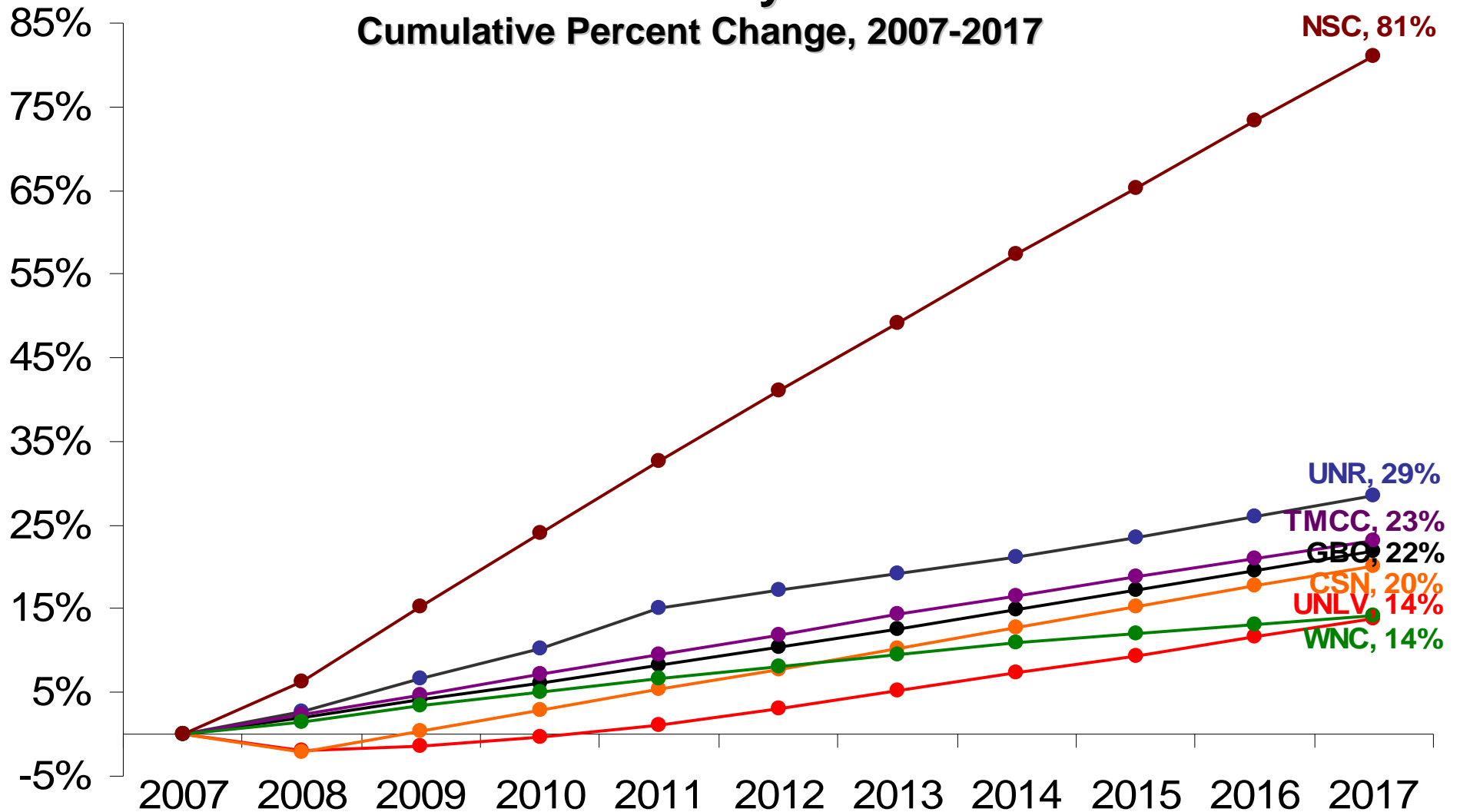
## Fall Headcount by Institution Type Cumulative Percent Change, 2007-2017





# Enrollment Plans

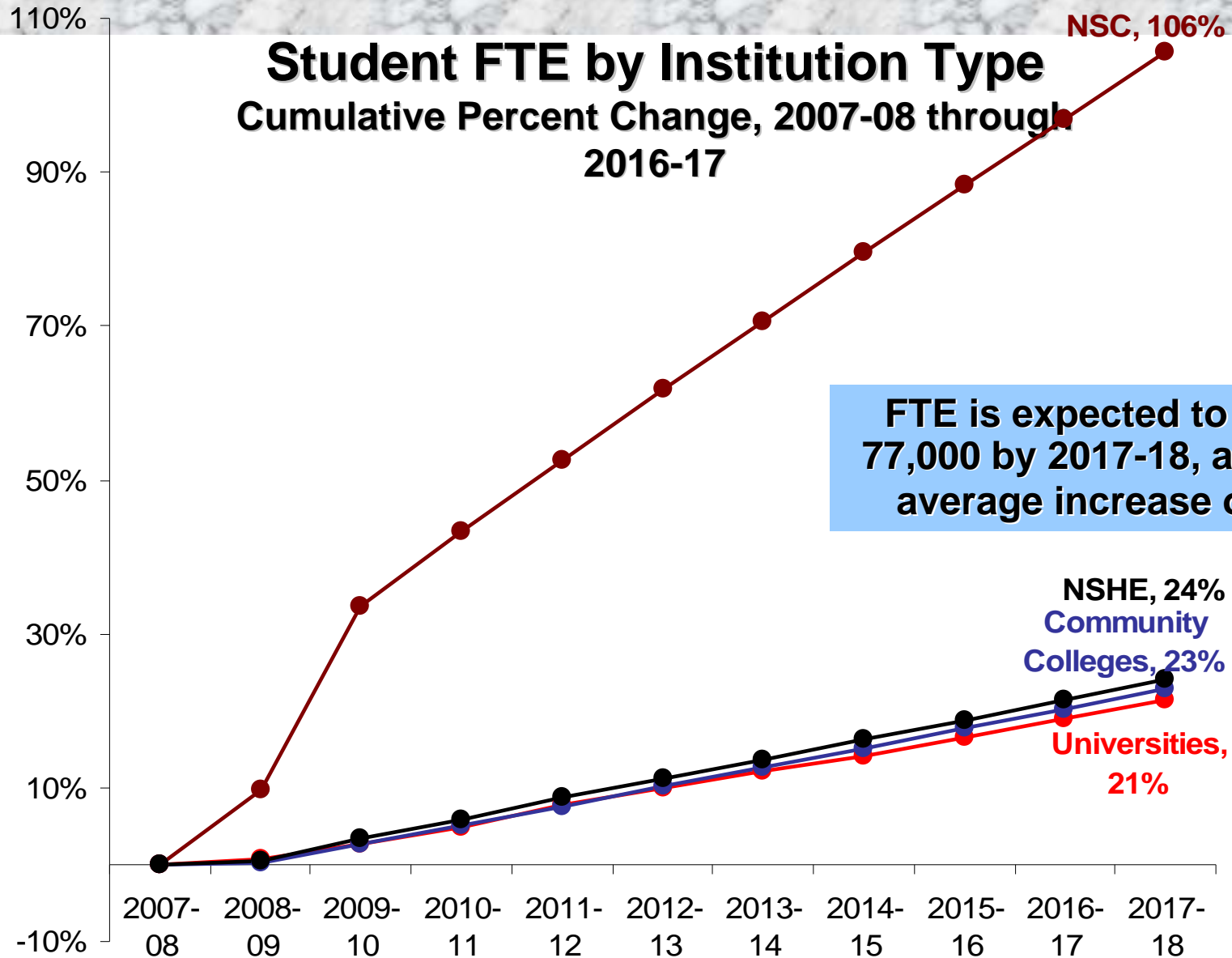
## Fall Headcount by Institution Cumulative Percent Change, 2007-2017







# Enrollment Plans



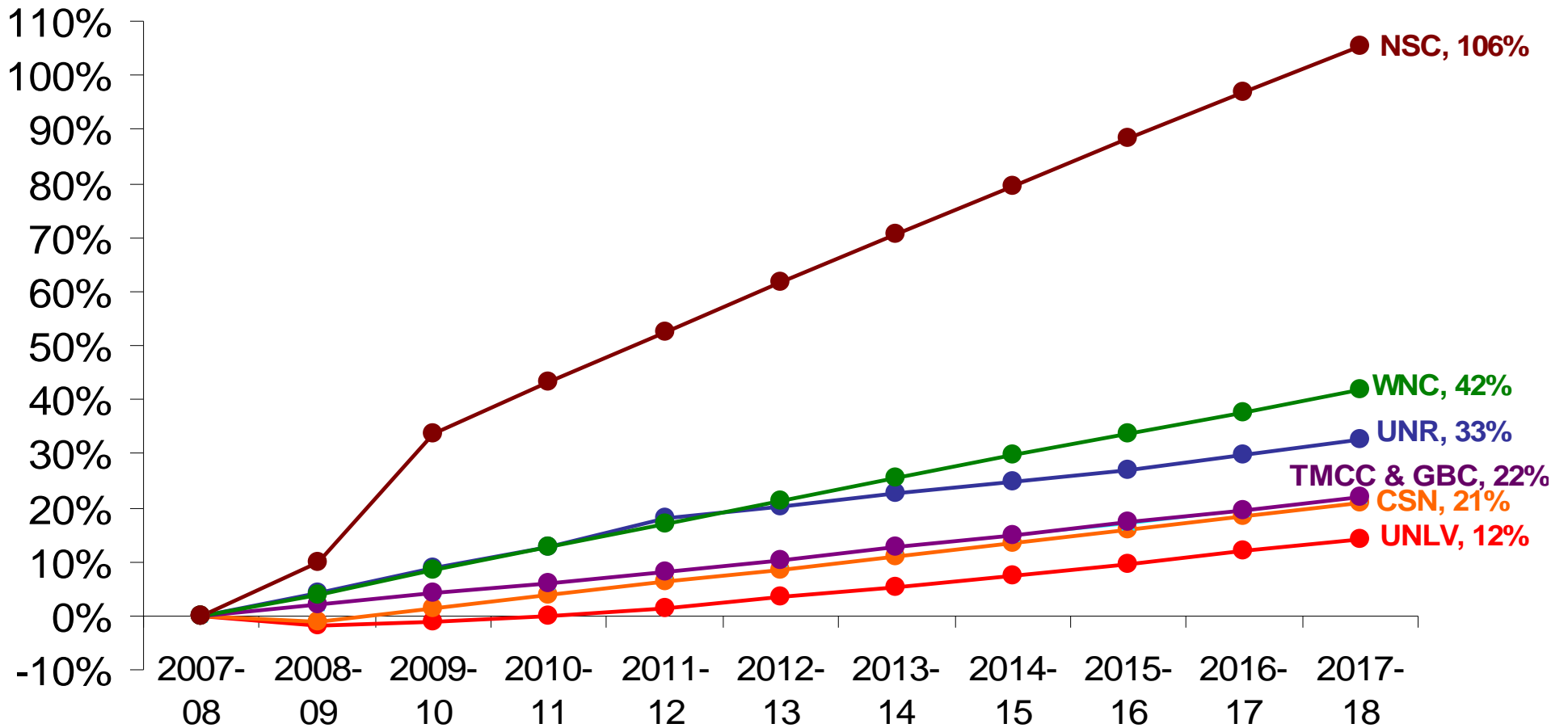
FTE is expected to exceed 77,000 by 2017-18, an annual average increase of 2.1%

Source: NSHE Enrollment Plans 2005-06 thru 2014-15



# Enrollment Plans

## Student FTE by Institution Cumulative Percent Change, 2007-08 through 2017-18

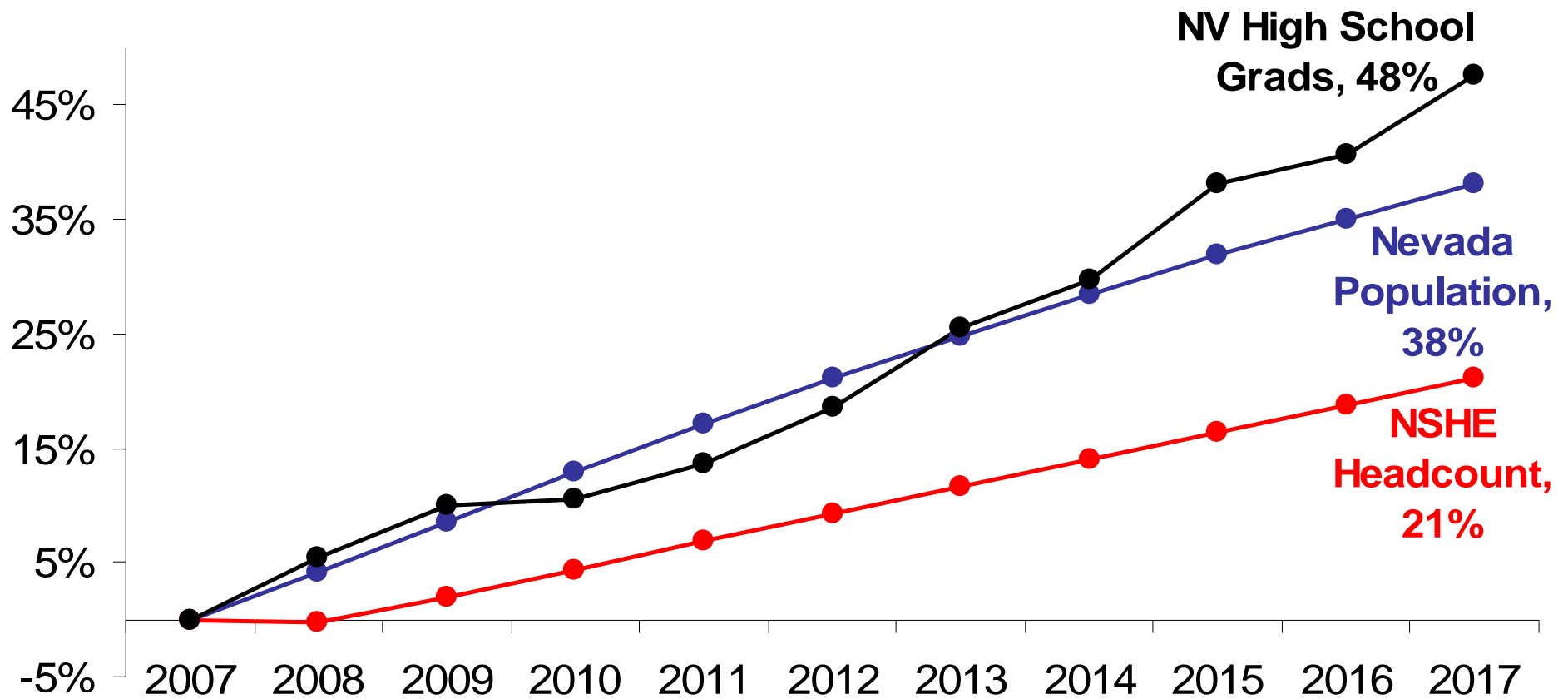


Source: NSHE Enrollment Plans 2007-08 through 2016-17



# Population & Enrollment Projections

2007 through 2017



Source: NSHE enrollment growth based on Enrollment Plans 2007-08, NV Population growth projected by State of Nevada Demographer, NV Public High School Graduate growth projected by WICHE.



# SUMMARY



# Actual vs. Projected Growth

	1997-2007 Actual*		2007-2017 Projected	
	Headcount Growth	FTE Growth	Headcount Growth	FTE Growth
<b>NSHE</b>	<b>27,506</b>	<b>19,000</b>	<b>22,615</b>	<b>14,902</b>
<b>UNLV</b>	<b>37%</b>	<b>39%</b>	<b>14%</b>	<b>14%</b>
<b>UNR</b>	<b>34%</b>	<b>31%</b>	<b>29%</b>	<b>33%</b>
<b>CSN</b>	<b>43%</b>	<b>61%</b>	<b>20%</b>	<b>21%</b>
<b>GBC</b>	<b>-12%</b>	<b>39%</b>	<b>22%</b>	<b>22%</b>
<b>TMCC</b>	<b>25%</b>	<b>44%</b>	<b>23%</b>	<b>22%</b>
<b>WNC</b>	<b>-4%</b>	<b>21%</b>	<b>14%</b>	<b>42%</b>
<b>NSC</b>	<b>n/a</b>	<b>n/a</b>	<b>81%</b>	<b>106%</b>

\* Fall 2007 Preliminary



# Summary

- **Looking Back Ten Years (1997 – 2007):**
  - NSHE headcount grew by 35%, equating to an increase of 27,506 students.
  - NSHE student FTE increased by 46% for a total of 19,310 FTE.
  - FTE growth outpacing headcount was a common trend across the System.
  - Growth of NSHE headcount enrollment was outpaced by both Nevada's population (53%), as well as the increase in high school graduates (65%).



# Summary

- **Looking Forward Ten Years (2007 – 2017):**
  - NSHE Headcount projected to grow by 22,615 students (21%).
  - NSHE Student FTE projected to increase by 24%.
  - Nevada high school graduates are expected to increase by nearly 50%, outpacing the projected growth in headcount for the NSHE.
  - Nevada population is expected to increase by 38%, outpacing the projected growth in headcount for the NSHE.



# APPENDIX



**NSHE ENROLLMENT PLANS, 2007-08**  
**FALL HEADCOUNT: Fall 2007 through Fall 2017**  
**ANNUAL AVERAGE FTE: 2006-07 through 2017-18**

Campus Enrollment Plans				
Fall Term Headcount		Annual Average FTE (AAFTE)		
Actual	1990	61,480	1990-91	30,620
	1991	63,054	1991-92	33,544
	1992	65,816	1992-93	35,131
	1993	65,124	1993-94	34,672
	1994	65,598	1994-95	34,903
	1995	68,230	1995-96	36,584
	1996	74,655	1996-97	39,601
	1997	78,407	1997-98	42,013
	1998	82,666	1998-99	44,199
	1999	88,617	1999-00	46,809
	2000	87,941	2000-01	48,107
	2001	90,080	2001-02	49,953
	2002	93,068	2002-03	54,037
2003	97,646	2003-04	57,219	
2004	100,581	2004-05	59,746	
2005	103,352	2005-06	60,948	
2006	104,692	2006-07	61,323	
Planned	2007	106,700	2007-08	62,142
	2008	106,360	2008-09	62,503
	2009	108,810	2009-10	64,225
	2010	111,309	2010-11	65,781
	2011	114,120	2011-12	67,570
	2012	116,645	2012-13	69,118
	2013	119,151	2013-14	70,659
	2014	121,634	2014-15	72,191
	2015	124,147	2015-16	73,760
	2016	126,729	2016-17	75,395
	2017	129,315	2017-18	77,044

Ratio: AAFTE per Headcount
0.4980
0.5320
0.5338
0.5324
0.5321
0.5362
0.5305
0.5358
0.5347
0.5282
0.5470
0.5545
0.5806
0.5860
0.5940
0.5897
0.5857
0.5824
0.5877
0.5902
0.5910
0.5921
0.5925
0.5930
0.5935
0.5941
0.5949
0.5958

Headcount Enrollment per 1000 population
50
48
48
46
43
42
44
44
44
46
44
42
42
44
42
41
40
39
37
37
36
36
35
35
35
35
34
34

AAFTE Plans From Previous Planning Cycle (Spring 2006) and Change to Current Plans		
AAFTE Spring 2006	From Spring 2006 to current plan	
	Num	Pct
61,568	-620	-1%
64,390	-3,067	-5%
67,497	-5,354	-8%
71,050	-8,547	-12%
74,793	-10,569	-14%
78,110	-12,329	-16%
81,393	-13,822	-17%
84,678	-15,561	-18%
87,866	-17,207	-20%
90,889	-18,697	-21%

Year-to-Year Percent Changes			
Enrollment		Demographic Changes	
Total Headcount	AAFTE	Nevada Public HS Grads	Nevada Population
-	-	-	-
3%	10%	-6%	7%
4%	5%	3%	4%
-1%	-1%	5%	4%
1%	1%	6%	7%
4%	5%	3%	6%
9%	8%	9%	5%
5%	6%	6%	6%
5%	5%	5%	5%
7%	6%	3%	4%
-1%	3%	4%	4%
2%	4%	6%	5%
3%	8%	-18%	3%
5%	6%	30%	1%
3%	4%	16%	8%
3%	2%	-2%	4%
1%	1%	5%	5%
2%	1%	8%	4%
0%	1%	5%	4%
2%	3%	4%	4%
2%	2%	1%	4%
3%	3%	3%	4%
2%	2%	4%	3%
2%	2%	6%	3%
2%	2%	3%	3%
2%	2%	6%	3%
2%	2%	2%	2%
2%	2%	5%	2%

% Chg. 1997 to 2006 vs. 2007 to 2016		
	1997 to 2006	2007 to 2016
%Chg - AAFTE	46%	24%
% Chg - headcount	34%	21%
% Chg - HS grads	54%	48%
% Chg - population	47%	38%

source:  
Population: State of Nevada Demographer  
HS Grads: actual: NV Dept. of Education;  
projections: WICHE





**NSC ENROLLMENT PLANS, 2007-08**  
**FALL HEADCOUNT: Fall 2007 through Fall 2017**  
**ANNUAL AVERAGE FTE: 2006-07 through 2017-18**

Campus Enrollment Plans				
Fall Term Headcount		Annual Average FTE (AAFTE)		
Actual	1990		1990-91	
	1991		1991-92	
	1992		1992-93	
	1993		1993-94	
	1994		1994-95	
	1995		1995-96	
	1996		1996-97	
	1997		1997-98	
	1998		1998-99	
	1999		1999-00	
	2000		2000-01	
2001		2001-02		
2002	177	2002-03	146	
2003	531	2003-04	394	
2004	1,272	2004-05	943	
2005	1,562	2005-06	1,079	
2006	1,959	2006-07	1,327	
Planned	2007	2,194	2007-08	1,439
	2008	2,331	2008-09	1,579
	2009	2,530	2009-10	1,922
	2010	2,722	2010-11	2,061
	2011	2,910	2011-12	2,195
	2012	3,094	2012-13	2,327
	2013	3,274	2013-14	2,456
	2014	3,452	2014-15	2,584
	2015	3,628	2015-16	2,710
	2016	3,802	2016-17	2,834
	2017	3,974	2017-18	2,958

Ratio: AAFTE per Headcount
0.8249
0.7420
0.7414
0.6908
0.6774
0.6559
0.6774
0.7597
0.7572
0.7543
0.7521
0.7502
0.7486
0.7470
0.7454
0.7443

Headcount Enrollment per 1000 population
0.1
0.2
1
1
1
1
1
1
1
1
1
1
1
1
1
1

AAFTE Plans From Previous Planning Cycle (Spring 2006) and Change to Current Plans		
AAFTE Spring 2006	From Spring 2006 to current plan	
	Num	Pct
1,164	-85	-7%
1,553	-226	-15%
2,140	-701	-33%
2,611	-1,032	-40%
3,037	-1,115	-37%
3,434	-1,373	-40%
3,830	-1,635	-43%
4,253	-1,926	-45%
4,676	-2,220	-47%
5,099	-2,515	-49%

Year-to-Year Percent Changes			
Enrollment		Demographic Changes	
Total Headcount	AAFTE	Nevada Public HS Grads	Nevada Population
-	-	-	-
		-6%	7%
		3%	4%
		5%	4%
		6%	7%
		3%	6%
		9%	5%
		6%	6%
		5%	5%
		3%	4%
		4%	4%
		6%	5%
		-18%	3%
200%	170%	30%	1%
140%	139%	16%	8%
23%	14%	-2%	4%
25%	23%	5%	5%
12%	8%	8%	4%
6%	10%	5%	4%
9%	22%	4%	4%
8%	7%	1%	4%
7%	7%	3%	4%
6%	6%	4%	3%
6%	6%	6%	3%
5%	5%	3%	3%
5%	5%	6%	3%
5%	5%	2%	2%
5%	4%	5%	2%

% Chg. 1997 to 2006 vs. 2007 to 2017		
	1997 to 2006	2007 to 2017
%Chg - AAFTE		106%
% Chg - headcount		81%
% Chg - HS grads	54%	48%
% Chg - population	47%	38%

source:  
Population: State of Nevada Demographer  
HS Grads: actual: NV Dept. of Education;  
projections: WICHE

**CSN ENROLLMENT PLANS, 2007-08**  
**FALL HEADCOUNT: Fall 2007 through Fall 2017**  
**ANNUAL AVERAGE FTE: 2006-07 through 2017-18**

Campus Enrollment Plans				
Fall Term Headcount		Annual Average FTE (AAFTE)		
Actual	1990	15,135	1990-91	5,293
	1991	15,551	1991-92	6,391
	1992	18,111	1992-93	7,345
	1993	17,118	1993-94	6,953
	1994	17,113	1994-95	6,998
	1995	20,741	1995-96	8,857
	1996	25,012	1996-97	10,424
	1997	26,707	1997-98	11,256
	1998	30,440	1998-99	12,597
	1999	35,297	1999-00	14,222
	2000	32,639	2000-01	14,315
	2001	33,364	2001-02	15,208
	2002	33,481	2002-03	16,647
2003	35,471	2003-04	17,569	
2004	35,399	2004-05	17,685	
2005	36,242	2005-06	17,891	
2006	36,843	2006-07	18,176	
Planned	2007	38,990	2007-08	18,833
	2008	38,180	2008-09	18,616
	2009	39,143	2009-10	19,075
	2010	40,106	2010-11	19,535
	2011	41,069	2011-12	19,995
	2012	42,033	2012-13	20,455
	2013	42,996	2013-14	20,915
	2014	43,959	2014-15	21,375
	2015	44,922	2015-16	21,834
	2016	45,885	2016-17	22,294
	2017	46,849	2017-08	22,755

Ratio: AAFTE per Headcount
0.3497
0.4110
0.4056
0.4062
0.4089
0.4270
0.4168
0.4215
0.4138
0.4029
0.4386
0.4558
0.4972
0.4953
0.4996
0.4937
0.4933
0.4830
0.4876
0.4873
0.4871
0.4869
0.4866
0.4864
0.4862
0.4860
0.4859
0.4857

Headcount Enrollment per 1000 population
12
12
13
12
11
13
15
15
16
18
16
16
15
16
15
14
14
14
13
13
13
13
13
13
12
12
12

AAFTE Plans From Previous Planning Cycle (Spring 2006) and Change to Current Plans		
AAFTE Spring 2006	From Spring 2006 to current plan	
	Num	Pct
18,105	-214	-1%
19,324	-1,148	-6%
20,572	-1,739	-8%
21,840	-3,224	-15%
23,132	-4,057	-18%
24,445	-4,910	-20%
25,763	-5,768	-22%
27,094	-6,639	-25%
28,424	-7,509	-26%
29,752	-8,377	-28%

Year-to-Year Percent Changes					
Enrollment		Demographic Changes			
Total Headcount	AAFTE	Nevada Public HS Grads	Nevada Population	Service Area	
				HS Grads	Population
-	-	-	-	-	-
3%	21%	-6%	7%	-8%	8%
16%	15%	3%	4%	2%	5%
-5%	-5%	5%	4%	8%	5%
0%	1%	6%	7%	4%	8%
21%	27%	3%	6%	4%	7%
21%	18%	9%	5%	11%	6%
7%	8%	6%	6%	7%	7%
14%	12%	5%	5%	5%	6%
16%	13%	3%	4%	4%	5%
-8%	1%	4%	4%	5%	5%
2%	6%	6%	5%	5%	6%
0%	9%	-18%	3%	2%	4%
6%	6%	30%	1%	6%	0%
0%	1%	16%	8%	5%	11%
2%	1%	-2%	4%	7%	5%
2%	2%	5%	5%		5%
6%	4%	8%	4%		5%
-2%	-1%	5%	4%		5%
3%	2%	4%	4%		5%
2%	2%	1%	4%		5%
2%	2%	3%	4%		4%
2%	2%	4%	3%		4%
2%	2%	6%	3%		4%
2%	2%	3%	3%		3%
2%	2%	6%	3%		3%
2%	2%	2%	2%		3%
2%	2%	5%	2%		2%

Service Area Projections not Available

% Chg. 1997 to 2006 vs. 2007 to 2017		
	1997 to 2006	2007 to 2017
%Chg - AAFTE	61%	21%
% Chg - headcount	38%	20%
% Chg - HS grads	54%	48%
% Chg - population	47%	38%

source:  
Population: State of Nevada Demographer  
HS Grads: actual: NV Dept. of Education; projections: WICHE  
Service Area: Clark, Esmeralda, Lincoln, and Nye

**GBC ENROLLMENT PLANS, 2007-08**  
**FALL HEADCOUNT: Fall 2007 through Fall 2017**  
**ANNUAL AVERAGE FTE: 2006-07 through 2017-18**

Campus Enrollment Plans					
Fall Term Headcount		Annual Average FTE (AAFTE)			
Actual	1990	2,277	1990-91	794	
	1991	2,481	1991-92	870	
	1992	2,883	1992-93	932	
	1993	2,490	1993-94	906	
	1994	2,565	1994-95	894	
	1995	2,805	1995-96	939	
	1996	3,200	1996-97	1,015	
	1997	3,372	1997-98	1,143	
	1998	2,900	1998-99	1,167	
	1999	2,822	1999-00	1,236	
	2000	3,251	2000-01	1,321	
	2001	2,680	2001-02	1,203	
	2002	2,733	2002-03	1,263	
2003	2,564	2003-04	1,427		
2004	2,575	2004-05	1,343		
2005	2,877	2005-06	1,363		
2006	3,390	2006-07	1,589		
Planned	2007	3,048	2007-08	1,605	
	2008	3,109	2008-09	1,637	
	2009	3,172	2009-10	1,670	
	2010	3,235	2010-11	1,703	
	2011	3,299	2011-12	1,737	
	2012	3,366	2012-13	1,772	
	2013	3,432	2013-14	1,807	
	2014	3,500	2014-15	1,843	
	2015	3,571	2015-16	1,880	
	2016	3,643	2016-17	1,918	
	2017	3,715	2017-18	1,956	

Ratio: AAFTE per Headcount
0.3487
0.3507
0.3233
0.3639
0.3485
0.3348
0.3172
0.3390
0.4024
0.4380
0.4063
0.4489
0.4621
0.5566
0.5216
0.4738
0.4687
0.5266
0.5265
0.5265
0.5264
0.5264
0.5265
0.5266
0.5265
0.5265
0.5265

Headcount Enrollment per 1000 population
2
2
2
2
2
2
2
2
2
1
2
1
1
1
1
1
1
1
1
1
1
1
1
1
1
1

AAFTE Plans From Previous Planning Cycle (Spring 2006) and Change to Current Plans		
AAFTE Spring 2006	From Spring 2006 to current plan	
	Num	Pct
1,359	4	0%
1,400	189	14%
1,442	163	11%
1,485	152	10%
1,530	140	9%
1,575	128	8%
1,623	114	7%
1,671	101	6%
1,722	85	5%
1,773	70	4%

Year-to-Year Percent Changes					
Enrollment		Demographic Changes		Service Area	
Total Headcount	AAFTE	Nevada Public HS Grads	Nevada Population	HS Grads	Population
-	-	-	-	-	-
9%	10%	-6%	7%	5%	4%
16%	7%	3%	4%	-3%	3%
-14%	-3%	5%	4%	11%	3%
3%	-1%	6%	7%	13%	4%
9%	5%	3%	6%	-5%	5%
14%	8%	9%	5%	15%	5%
5%	13%	6%	6%	2%	6%
-14%	2%	5%	5%	0%	2%
-3%	6%	3%	4%	11%	-1%
15%	7%	4%	4%	-9%	-1%
-18%	-9%	6%	5%	-1%	2%
2%	5%	-18%	3%	-15%	0%
-6%	13%	30%	1%	13%	1%
0%	-6%	16%	8%	-4%	2%
12%	1%	-2%	4%	4%	5%
18%	17%	5%	5%		1%
-10%	1%	8%	4%		2%
2%	2%	5%	4%		2%
2%	2%	4%	4%		1%
2%	2%	1%	4%		2%
2%	2%	3%	4%		1%
2%	2%	4%	3%		1%
2%	2%	6%	3%		1%
2%	2%	3%	3%		1%
2%	2%	6%	3%		0%
2%	2%	2%	2%		0%
2%	2%	5%	2%		0%

Service Area Projections not Available

% Chg. 1997 to 2006 vs. 2007 to 2017		
	1997 to 2006	2007 to 2017
%Chg - AAFTE	39%	22%
% Chg - headcount	1%	22%
% Chg - HS grads	54%	48%
% Chg - population	47%	38%

source:  
 Population: State of Nevada Demographer  
 HS Grads: actual: NV Dept. of Education; projections: WICHE  
 Service Area: Elko, Eureka, Humboldt, Lander, Nye, and White Pine

**TMCC ENROLLMENT PLANS, 2007-08**  
**FALL HEADCOUNT: Fall 2007 through Fall 2017**  
**ANNUAL AVERAGE FTE: 2006-07 through 2017-18**

Campus Enrollment Plans						
Fall Term Headcount		Annual Average FTE (AAFTE)		Ratio: AAFTE per Headcount	Headcount Enrollment per 1000 population	
Actual	1990	9,211	1990-91			3,270
	1991	9,116	1991-92	3,569	0.3915	7
	1992	8,938	1992-93	3,741	0.4186	7
	1993	9,041	1993-94	3,682	0.4073	6
	1994	8,707	1994-95	3,498	0.4017	6
	1995	8,458	1995-96	3,434	0.4060	5
	1996	9,338	1996-97	3,908	0.4185	6
	1997	10,051	1997-98	4,287	0.4265	6
	1998	10,139	1998-99	4,516	0.4454	5
	1999	10,539	1999-00	4,654	0.4416	5
	2000	10,878	2000-01	4,766	0.4381	5
	2001	10,445	2001-02	4,898	0.4689	5
	2002	11,250	2002-03	5,259	0.4675	5
2003	11,348	2003-04	5,523	0.4867	5	
2004	11,851	2004-05	5,845	0.4932	5	
2005	12,043	2005-06	6,026	0.5004	5	
2006	12,193	2006-07	6,160	0.5052	5	
Planned	2007	12,474	2007-08	6,390	0.5123	5
	2008	12,767	2008-09	6,518	0.5105	4
	2009	13,064	2009-10	6,648	0.5089	4
	2010	13,363	2010-11	6,781	0.5074	4
	2011	13,664	2011-12	6,917	0.5062	4
	2012	13,962	2012-13	7,055	0.5053	4
	2013	14,255	2013-14	7,196	0.5048	4
	2014	14,541	2014-15	7,340	0.5048	4
	2015	14,821	2015-16	7,487	0.5052	4
	2016	15,092	2016-17	7,637	0.5060	4
	2017	15,355	2017-18	7,790	0.5073	4

Ratio: AAFTE per Headcount	Headcount Enrollment per 1000 population
0.3550	7
0.3915	7
0.4186	7
0.4073	6
0.4017	6
0.4060	5
0.4185	6
0.4265	6
0.4454	5
0.4416	5
0.4381	5
0.4689	5
0.4675	5
0.4867	5
0.4932	5
0.5004	5
0.5052	5
0.5123	5
0.5105	4
0.5089	4
0.5074	4
0.5062	4
0.5053	4
0.5048	4
0.5048	4
0.5052	4
0.5060	4
0.5073	4

AAFTE Plans From Previous Planning Cycle (Spring 2006) and Change to Current Plans		
AAFTE Spring 2006	From Spring 2006 to current plan	
	Num	Pct
6,130	-104	-2%
6,421	-261	-4%
6,717	-327	-5%
7,014	-496	-7%
7,315	-667	-9%
7,617	-836	-11%
7,922	-1,005	-13%
8,231	-1,176	-14%
8,540	-1,344	-16%
8,849	-1,509	-17%

Year-to-Year Percent Changes					
Enrollment		Demographic Changes		Service Area	
Total Headcount	AAFTE	Nevada Public HS Grads	Nevada Population	HS Grads	Population
-	-	-	-	-	-
-1%	9%	-6%	7%	-6%	3%
-2%	5%	3%	4%	2%	3%
1%	-2%	5%	4%	-3%	3%
-4%	-5%	6%	7%	9%	4%
-3%	-2%	3%	6%	0%	3%
10%	14%	9%	5%	5%	3%
8%	10%	6%	6%	3%	3%
1%	5%	5%	5%	10%	2%
4%	3%	3%	4%	-3%	2%
3%	2%	4%	4%	9%	2%
-4%	3%	6%	5%	10%	3%
8%	7%	-18%	3%	-4%	2%
1%	5%	30%	1%	3%	4%
4%	6%	16%	8%	3%	3%
2%	3%	-2%	4%	3%	3%
1%	2%	5%	5%		2%
2%	4%	8%	4%		2%
2%	2%	5%	4%		2%
2%	2%	4%	4%		2%
2%	2%	1%	4%		2%
2%	2%	3%	4%		2%
2%	2%	4%	3%		2%
2%	2%	6%	3%		2%
2%	2%	3%	3%		2%
2%	2%	6%	3%		2%
2%	2%	2%	2%		2%
2%	2%	5%	2%		2%

Service Area Projections not Available

% Chg. 1997 to 2006 vs. 2007 to 2017		
	1997 to 2006	2007 to 2017
%Chg - AAFTE	44%	22%
% Chg - headcount	21%	23%
% Chg - HS grads	54%	48%
% Chg - population	47%	38%

source:

Population: State of Nevada Demographer

HS Grads: actual: NV Dept. of Education; projections: WICHE

Service Area: greater urban area of Reno-Sparks and Incline Village - above demographic information includes all of Washoe County

**WNC ENROLLMENT PLANS, 2007-08**  
**FALL HEADCOUNT: Fall 2007 through Fall 2017**  
**ANNUAL AVERAGE FTE: 2006-07 through 2017-18**

Campus Enrollment Plans						
Fall Term Headcount		Annual Average FTE (AAFTE)		Ratio: AAFTE per Headcount	Headcount Enrollment per 1000 population	
Actual	1990	5,178	1990-91			1,665
	1991	4,688	1991-92	1,750	0.3733	4
	1992	4,687	1992-93	1,796	0.3832	3
	1993	4,656	1993-94	1,819	0.3907	3
	1994	4,595	1994-95	1,833	0.3989	3
	1995	4,410	1995-96	1,746	0.3959	3
	1996	5,143	1996-97	1,842	0.3582	3
	1997	5,563	1997-98	1,982	0.3563	3
	1998	5,572	1998-99	2,012	0.3611	3
	1999	5,574	1999-00	2,061	0.3698	3
	2000	5,682	2000-01	2,060	0.3625	3
	2001	5,657	2001-02	2,149	0.3799	3
	2002	5,369	2002-03	2,160	0.4023	2
2003	5,183	2003-04	2,179	0.4204	2	
2004	5,379	2004-05	2,247	0.4177	2	
2005	5,524	2005-06	2,331	0.4220	2	
2006	5,528	2006-07	2,393	0.4329	2	
Planned	2007	5,334	2007-08	2,365	0.4434	2
	2008	5,411	2008-09	2,457	0.4541	2
	2009	5,512	2009-10	2,561	0.4646	2
	2010	5,603	2010-11	2,663	0.4753	2
	2011	5,689	2011-12	2,765	0.4860	2
	2012	5,768	2012-13	2,865	0.4967	2
	2013	5,844	2013-14	2,965	0.5074	2
	2014	5,919	2014-15	3,066	0.5180	2
	2015	5,976	2015-16	3,159	0.5286	2
	2016	6,033	2016-17	3,254	0.5394	2
	2017	6,092	2017-18	3,351	0.5501	2

Ratio: AAFTE per Headcount
0.3216
0.3733
0.3832
0.3907
0.3989
0.3959
0.3582
0.3563
0.3611
0.3698
0.3625
0.3799
0.4023
0.4204
0.4177
0.4220
0.4329
0.4434
0.4541
0.4646
0.4753
0.4860
0.4967
0.5074
0.5180
0.5286
0.5394
0.5501

Headcount Enrollment per 1000 population
4
4
3
3
3
3
3
3
3
3
3
3
2
2
2
2
2
2
2
2
2
2
2
2
2
2

AAFTE Plans From Previous Planning Cycle (Spring 2006) and Change to Current Plans		
AAFTE Spring 2006	From Spring 2006 to current plan	
	Num	Pct
2,400	-69	-3%
2,523	-130	-5%
2,647	-282	-11%
2,776	-319	-11%
2,900	-339	-12%
3,018	-355	-12%
3,137	-372	-12%
3,259	-394	-12%
3,380	-415	-12%
3,506	-440	-13%

Year-to-Year Percent Changes					
Enrollment		Demographic Changes		Service Area	
Total Headcount	AAFTE	Nevada Public HS Grads	Nevada Population	HS Grads	Population
-	-	-	-	-	-
-9%	5%	-6%	7%	-3%	5%
0%	3%	3%	4%	6%	4%
-1%	1%	5%	4%	3%	4%
-1%	1%	6%	7%	4%	4%
-4%	-5%	3%	6%	8%	5%
17%	5%	9%	5%	2%	4%
8%	8%	6%	6%	6%	3%
0%	2%	5%	5%	6%	2%
0%	2%	3%	4%	2%	2%
2%	0%	4%	4%	-3%	2%
0%	4%	6%	5%	10%	3%
-5%	1%	-18%	3%	0%	2%
-3%	1%	30%	1%	-1%	3%
4%	3%	16%	8%	0%	4%
3%	4%	-2%	4%	0%	4%
0%	3%	5%	5%		3%
-4%	-1%	8%	4%		2%
1%	4%	5%	4%		2%
2%	4%	4%	4%		2%
2%	4%	1%	4%		2%
2%	4%	3%	4%		2%
1%	4%	4%	3%		2%
1%	3%	6%	3%		2%
1%	3%	3%	3%		2%
1%	3%	6%	2%		2%
1%	3%	5%	2%		2%

Service Area Projections not Available

% Chg. 1997 to 2006 vs. 2007 to 2017		
	1997 to 2006	2007 to 2017
%Chg - AAFTE	21%	42%
% Chg - headcount	-1%	14%
% Chg - HS grads	54%	48%
% Chg - population	47%	38%

source:

Population: State of Nevada Demographer

HS Grads: actual: NV Dept. of Education; projections: WICHE

Service Area: Carson City, Churchill, Douglas, Lyon, Mineral, Pershing, Storey and the rural areas of Washoe county - above demographic information does not include rural areas of Washoe County.