

**Western Nevada College
Business
Program Review Report
2013 – 2019**

Program Name: Business

Degree(s): Associate of Applied Science
Associate of Business (new in 2017)
Certificate of Achievement

Academic Division Career and Technical Education (2013-2019)
Professional and Technical (post 2019)

Years Reviewed: 2013 - 2019

Date of Previous Reviews: 2006, 2013

Program Responsible Person: Dr. Robert Whitcomb, Professor
Business, Management, and Marketing

Internal Reviewer: Jason Spohr, MBA
Instructor, Automotive Technology
Western Nevada College

External Reviewer: Dr. Charles Iliff
Professor Emeritus, College of Business and Public Policy
University of Alaska-Anchorage

Contents

PART 1. PROGRAM OVERVIEW

A. Program Description Page 4

B. College and Program Mission Page 4

C. College and Program Goals Page 5

D. Short Description Page 8

- a. Unique Characteristics
- b. Concerns or Trends Affecting the Program
- c. Significant Changes/Needs in the next five years
- d. Program Student Learning Outcomes
- e. Required Course Matrix

E. Degrees and Certificates Offered Page 17

F. Niches Served Page 18

PART 2. PROGRAM EFFECTIVENESS

A. Evidence of Effectiveness Page 20

B. Evidence of Satisfaction Page 23

C. Certification / Licenses Page 24

D. Enrollment Trends Page 25

E. Need for Program Page 30

F. Curriculum Review Report Page 31

G. Internal and External Reviewers Reports Page 32

- a. Internal Reviewer Report Page 33
- b. External Reviewer Report Page 35

H. Findings and Recommendations Page 38

I. Appendices Page 40

Part 1: Program Overview

A. Program Description/Summary

The Business Program at Western Nevada College offers Certificate and Associate level courses through face-to-face (in Carson City only) and online instruction throughout its service area. The Associate of Applied Science - Business has three areas of emphasis: Accounting, General Business, and Management. In 2017, the Associate of Business degree was created.

Over the period of this Program Review (2013-2019), the number of full-time tenure track faculty has decreased from a high of four (in 2017-2018) to one (in Fall 2020). According to the Division Director, classes are taught by adjunct faculty holding appropriate credentials.

B. College and Program Mission (2013-2019)

College Mission	Program Mission
Western Nevada College inspires success in our community through opportunities that cultivate creativity, intellectual growth and technological excellence, in an environment that nurtures individual potential and respects differences.	The primary mission of the Business Program is to provide learners with the knowledge, skills, and abilities necessary for career success. To this end, the Program offers specialized certificates, and Associate degrees in Applied Science and Business.

C. College and Program Goals

College Core Themes, and/or Key Performance Indicators	Program Goals and Student Learning Outcomes
<p>Improve student success in program completion and graduation rates.</p> <p>Ensure institutional excellence in teaching, programs, and services.</p> <p>Embrace our College’s many communities and respond to their diverse needs.</p>	<p>Goal 1: Address the currency and relevance of the AAS degree program.</p> <p><u>Outcomes Completed:</u></p> <p>Outcome: Reviewed and updated Business Program Mission and Student Learning Outcomes.</p> <p>Outcome: Business Program deactivated ten classes with historic low enrollment.</p> <p>Outcome: Business Program standardized the Business Core for the AAS degree.</p> <p>Outcome: Business Program created new Associate in Business degree.</p> <p>Outcome: Business Program developed two-year rotation for all courses.</p>

College and Program Goals (continued)

College Goals	Program Goals and Outcomes
<p>Improve student success in program completion and graduation rates.</p> <p>Ensure institutional excellence in teaching, programs, and services.</p> <p>Embrace our College’s many communities and respond to their diverse needs.</p>	<p>Goal 2: Improve student success rate in degree/non-degree seeking students.</p> <p><u>Outcomes Completed:</u></p> <p>Outcome: Business Program updated information in the WNC Catalog and Program Guide to present then current mission statement, Student Learning Outcomes, course linkages, list of courses, and course sequencing.</p> <p>Outcome: Business Program adopted common wording amongst all degree requirements for core requirements, emphasis requirements, and overall program requirements.</p> <p>Outcome: In 2018-2019 academic year, all WNC Business programs (Certificates, AAS) became available fully online and face-to-face.</p> <p>Outcome: Course outlines were reviewed and standardized.</p> <p><u>Outcomes Not Completed:</u></p> <p>Develop a method to track success of students who choose WNC to update their skills.</p> <p>Assess learning by developing a pre/post inventory exam for all Business Students.</p> <p>Standardize course syllabi, SLO’s, instructional activities, and assessment.</p>

College and Program Goals (continued)

College Goals	Program Goals and Outcomes
<p>Improve student success in program completion and graduation rates.</p> <p>Ensure institutional excellence in teaching, programs, and services.</p> <p>Embrace our College's many communities and respond to their diverse needs.</p>	<p>Goal 3: Continue to meet community and rural area needs for preparing students for employment in business fields.</p> <p><u>Outcomes Completed:</u></p> <p>Outcome: Established a Business Advisory Group comprised of industry, community, K-12, and College members which meets annually.</p> <p><u>Outcomes Not Completed:</u></p> <p>Scheduling of courses in a way that complements the degree and allows students to get an introduction to Business that feeds into the degree.</p> <p>Develop methods to improve student awareness of the AAS degree and career choices in business.</p>

D. Short Description

a. Unique Characteristics

The Business Program provides learners with the knowledge, skills, and abilities necessary for career success. Through individual classes, specialized Certificates, the Associate in Applied Science degree in Business (AAS-Business) and the Associate in Business (AB) the Program has addressed individual student's personal and professional educational goals.

Historically, the Program has attracted students in all stages of their career – from entry level through mid-career and on into retirement. For those seeking career opportunities, a Certificate of Achievement or the AAS-Business degree with the choice of emphasis (Accounting, Business, or Management), may be the right choice. For students who aspired to continue their education by pursuing a bachelor's degree, the College's Associate in Business (AB) is fully transferable to the state universities in Nevada. For those in mid-career, specific courses that will help them “brush up” on new and emerging issues in business may be the right choice. Or perhaps courses leading to increased job opportunities and career advancement may be the right choice. For those approaching retirement, other specific courses might be the right choice. The point being, the RIGHT CHOICE is not just a degree, but is dependent upon the learner's personal and professional goals.

b. Concerns or Trends Affecting the Program

Lack of Tenured/Tenure Track Business Faculty

Since the last Program Review in May 2014, the Business Program has seen a continued decrease in full-time tenured track faculty. In 2014, the department had three full-time faculty: one in Accounting, one in General Business, and one in Management and Marketing. For the 2017-2018 academic year an additional faculty member was hired. At the end of the year, the position disappeared. During the 2018-2019 academic year, the Professor teaching General Business classes just stopped teaching and eventually was terminated. His position was not filled. At the end of the 2019-2020 academic year, the Accounting Professor retired. Again, the open position was not filled. The department now has one full-time tenured faculty member. (See Exhibit A, below.)

Exhibit A Business Program Full-time Tenured Staffing 2008 - 2021													
	2008 2009	2009 2010	2010 2011	2011 2012	2012 2013	2013 2014	2014 2015	2015 2016	2016 2017	2017 2018	2018 2019	2019 2020	2020 2021
Carson	3	3	3	1	1	1	1	1	1	2	1	1	1
Fallon	3	3	3	2	2	2	2	2	2	2	2	1	0
All	6	6	6	3	3	3	3	3	3	4	3	2	1

The Business Program continues to be overly reliant on adjunct instructors which has led to a stagnation of the overall Business curriculum. Part-time faculty have little or no role, responsibility, or accountability in program design and maintenance. It is unclear who their supervisor is and what, if any, oversight of their courses exists.

AB Cannibalizing AAS

In 2017, the Business Program introduced the Associate in Business (AB) degree. It was thought that this transfer friendly degree would attract AA students (who historically have taken Business courses). What happened instead, was the AB cannibalized the AAS-Business degree. (See Exhibits B below and Exhibit C on the following page.)

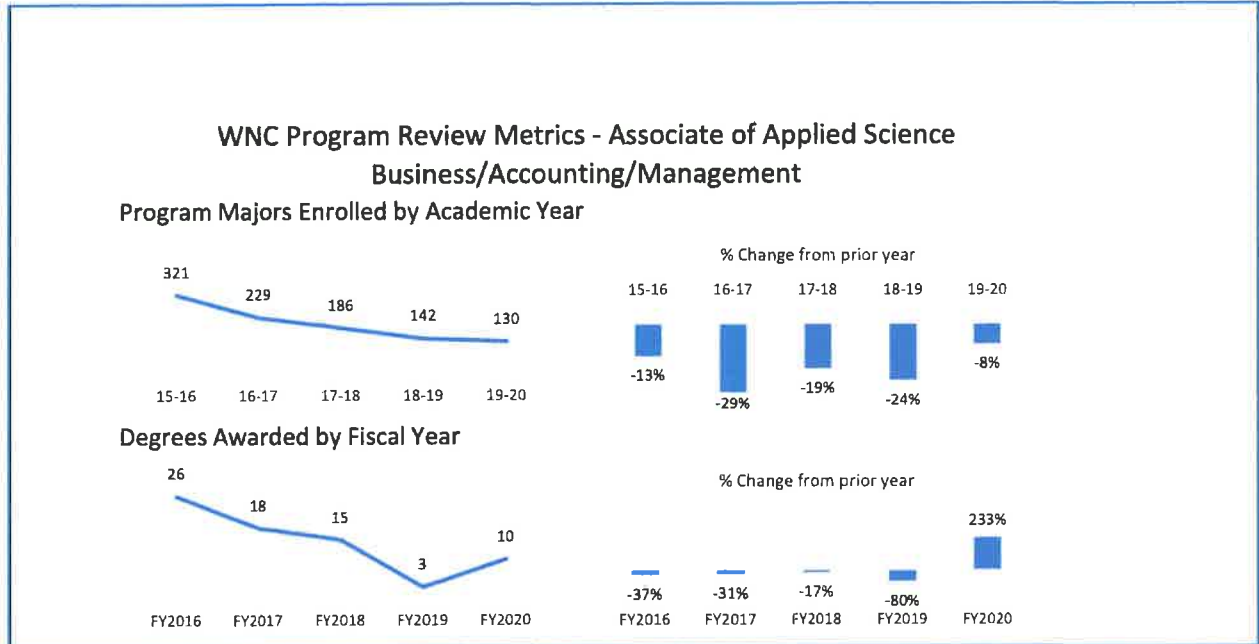
Exhibit B								
WNC Degrees and Certificates of Achievement by Fiscal* Year								
Degree	Description	2013	2014	2015	2016	2017	2018	2019
AAS	Business - Accounting	12	13	15	13	5	4	0
AAS	Business - Applied Accounting	0	0	0	0	0	0	0
AAS	Business - Management	7	5	5	3	7	4	1
AAS	Business - General Business	19	23	21	10	6	7	2
AB	Associate of Business	0	0	0	0	18	19	16
CT	Business	5	6	6	6	3	3	1
CT	Bookkeeping	5	3	3	5	5	2	5
CT	Retail Management	0	1	1	0	0	0	0
TOTAL		48	51	50	37	44	39	25
CT I**	Certified Realtor	0	18	29	23	18	11	14

* Note this is fiscal year data, not academic year data

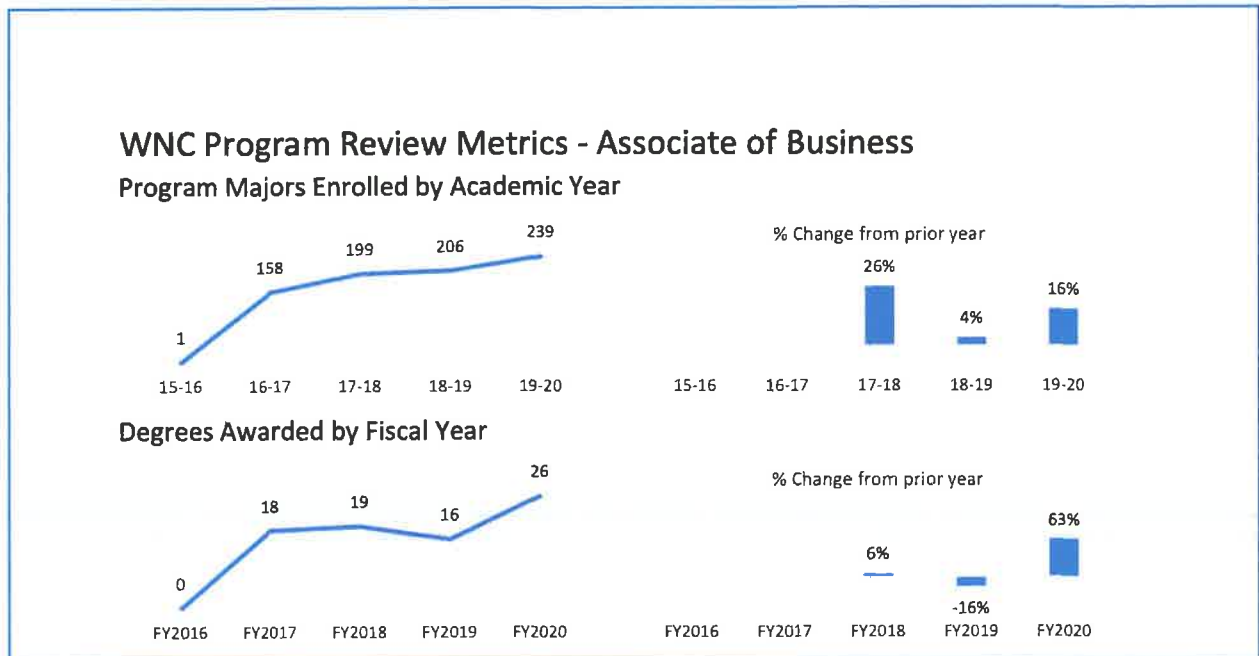
** WNC Certificate of Completion (industry skills preparation programs of less than 30 credits)

Source: IRE Website Degree Trends https://intranet.wnc.edu/departments/ir_ir/data-trends.php

Exhibit C
Shift in Enrollment in Business Majors Declining Enrollment in – AAS



Shift in Enrollment in Business Majors – Increase Enrollment in AB



Business degree completion remained stable until 2016 when it dropped nearly 30 percent. Completion rates remain 25 to 50 percent below the 2011-2015 average of 51 graduates per year.

When reviewing Degrees and Certificates Awarded by Academic Year, the downward trend in enrollment in the AAS is evidenced. See Exhibit D and E.

Exhibit D							
WNC Degrees and Certificates Awarded by Academic Year (Summer, Fall, Spring)							
Degree	Description	CIP Code	2015	2016	2017	2018	2019
AAS	Business -Accounting	52.0301	15	13	5	4	0
AAS	Business -Management	52.0201	0	0	0	0	0
AAS	General Business Emphasis	52.0101	5	3	7	4	1
AB	Associate of Business	52.0201	0	0	18	19	16
CT	Business	52.0101	6	6	3	3	1
CT	Business – Bookkeeping Cert.	52.0302	3	5	5	2	5
CT	Retail Management	52.12903	1	0	0	0	0

Source: IRE Website Degree Trends https://intranet.wnc.edu/departments/ir_ir/data-trends.php

Exhibit E									
WNC Declared Majors 2013-14 to 2019-20									
Degree	Description	2013 2014	2014 2015	2015 2016	2016 2017	2017 2018	2018 2019	2019 2020	Total
AAS	Business -Accounting	141	125	102	72	58	46	47	591
AAS	Business – Applied Accounting	0	1	0	0	0	0	0	1
AAS	Business -Management	170	152	153	100	65	60	54	754
AAS	General Business Emphasis	122	81	66	47	52	27	23	418
AB	Business	0	0	0	140	177	191	229	737
CT	Business	14	17	21	9	7	10	8	86
CT	Business – Bookkeeping Cert.	22	21	24	21	23	17	8	136
CT	Retail Management	3	9	3	1	1	0	0	17

Source: IRE Website Degree Trends https://intranet.wnc.edu/departments/ir_ir/data-trends.php

Decreasing Demand for Business Core and Specialized Classes

Concurrent with the introduction of the AB, the demand for required AAS elective Business classes declined beginning in 2016. Since the AB requires only five “Business” courses (ACC 201, 202, ECON 261, 262, and MKT 210) compared to ten in the Business Core, courses outside the AB have experienced low enrollment and were often cancelled. This will require the Business program

to reevaluate the Business Core, the AAS, and the non-AB courses. The result may be a less complete array of Business courses being available to the market.

Inadequate Tracking of Business Students

Of concern is the fact that the major success indicator at the College is graduation rate. Because many Business students take classes for professional development, career advancement, or continuing education, they are not necessarily degree seeking. Additionally, many students who take business courses are matriculated as AA students (as opposed to AAS-Business or AB). At this time, the Business Program does not have an adequate or accurate tracking system to measure other forms and definitions of program success.

Move to Online Instruction

Historically, WNC has offered its Business Program in several locations and formats. The majority of the classes were offered at the Carson City campus. Additionally, some classes were offered face-to-face in Fallon and Douglas. As demand in Fallon and Douglas decreased, Business course offerings in those areas decreased. Since two out of the three full-time faculty were based in Fallon, many classes were offered to WNC sites through IAV originating in Fallon.

In response to changing technology and student learning preferences, all WNC Business programs (Certificates, AAS, AB) became available fully online beginning in the 2018-2019 academic year.

The decline in the number and availability of face-to-face classes is being felt throughout the College. Community colleges have traditionally offered personal and professional development courses in a user-friendly face-to-face format. With

the shift towards traditional and high school students, the focus on the non-traditional student market has virtually disappeared.

Focus on Younger Learners

The College's emphasis on the "Jump Start" program has brought younger learners to the Business program. Unlike the previous students who tended to be "non-traditional" working adults, the high school students often lack strong academic and practical skills. They are not accustomed to being held accountable for due dates and the consequences for non-performance. Many were, and still are, simply unprepared for the academic rigors of college. This has resulted in adjunct instructors lowering their standards and expectations. The result is students graduating who are ill prepared for real world expectations.

c. Significant Changes or Needs in the Next Five Years.

COVID

COVID has changed everything. On the positive side, the pandemic has caused colleges and universities to rethink how to deliver courses. The fast answer was to take everything online. While this is a quick fix, it did not address the needs of all students. Of course, the hope is that as the pandemic subsides things will go back to how they were, with full classrooms and campus activities abounding.

Dream on. What we have learned is that higher education needs to rethink its model. We know seat time does not equal learning. Similarly, we know producing content, does not equal learning either. A totally new approach is necessary.

Sadly, that is beyond the scope of this Program Review.

Business Program has an Over Reliance on Adjuncts

At this time in the Business Program, there is one full-time tenured faculty member. If the Business Program is to remain viable, let alone grow, the College must allocate resources in the form of full-time, tenure track faculty. New ideas, methods, and commitments are needed.

Within the Business Program, full-time, tenured faculty have no authority to require adjuncts to follow program academic standards. Neither are full-time faculty involved in the recruitment, selection, hiring, training, or evaluation of adjunct faculty. There is no notification when adjuncts are hired resulting in no direction given to adjuncts related to course or program objectives. Courses are developed by adjuncts with no input or oversight from full-time, tenured faculty. There is no monitoring of courses or achievement of program objectives.

Redefining the Mission and Student Learning Objectives

As Western Nevada College has narrowed its focus to the preparation of students for transfer to baccalaureate degrees, the Business Program must redefine its mission and corresponding Student Learning Objectives. Where the focus had been on career preparation, it must now shift to preparing students for bachelor's level work via the AB degree. This will require changes in the present AAS degree offered in Business. This may result in moving to a generic AAS-Business without concentrations or phasing out the AAS entirely.

Deactivate Low Enrolled Classes

If the AAS-Business is minimalized, it will follow that the number of elective courses listed in the Course Catalogue will decrease. To facilitate this, a phase out strategy will need to be developed and put into place to ensure students currently enrolled in the AAS can complete the degree as they had planned in a timely manner.

d. Program Student Learning Objectives (2013-2019)

During the present Program Review period, the Business Program Student Learning Objectives included the following:

Upon completing a Business Certificate or Associate in Applied Science degree from Western Nevada College, student will be able to:

1. Articulate and demonstrate their personal employment related knowledge, skills, and abilities.
2. Evaluate the impacts of various economic systems and policies.
3. Summarize, record, analyze, interpret, and communicate accounting and financial information for decision making.
4. Devise, implement, and evaluate managerial decisions, actions, and outcomes.
5. Apply technology to aid in communications and decision making.
6. Present research, data, analysis, and conclusions through written and oral means.
7. Describe the changing landscape of the global market and its impact on the United States.

8. Summarize the social, ethical, legal, and diversity issues within contemporary business.
9. Develop Business, Financial, and Marketing Plans for established and emerging businesses.

The PAT Division Director has expressed her desire to decrease the number of Student Learning Outcomes in the Business Program in the coming years.

e. Required Course Matrix

See Appendix One for Required Course Matrices by Business Student Learning Objectives by Course.

E. Degrees and/or Certificates Offered

Associate of Business, 60 credits, 15 in Business

Associate of Applied Science in Business, 60 credits, 45 in Business

Emphasis in Accounting

Emphasis in General Business

Emphasis in Management

Certificate of Achievement, 30 credits, 21 in Business

Certificate of Bookkeeping

Certificate of Business

See Appendix Two for the Business Program Degree Templates.

F. Niches Served

Historically, the Business Program provided:

- Foundation and pre-requisite skills of business and career employment
- Enhanced skills for professional career development and job upgrades.
- General interest courses for individuals seeking information about personal finance, small business, economics, and other fields.
- Required elective classes for other academic program areas.
- Retraining for displaced/downsized workers.
- Opportunities for students to obtain certificates and degrees while fulfilling pre-requisites or transfer credits that will transfer towards baccalaureate degree programs of study.
- State workers the opportunity to develop their professional skills and promote within the state system, often resulting in pay increases.

The College's focus has shifted to target high school students through dual enrollment programs. These students, who will receive their associate degree at the same time as their high school diploma are following the College's bachelor's degree pathway. WNC has become a pass-through institution on the way to the University.

This change of focus will result in a narrower niche centered on:

- Required elective classes for other academic program areas.
- Opportunities for students to obtain certificates and degrees while fulfilling pre-requisites or transfer credits that will transfer towards baccalaureate degree programs of study.

Regrettably, this removes the College's commitment to long-term community and economic develop by purging the following:

- Foundation and pre-requisite skills of business and career employment
- Enhanced skills for professional career development and job upgrades.
- General interest courses for individuals seeking information about personal finance, small business, economics, and other fields.
- Retraining for displaced/downsized workers.
- State workers the opportunity to develop their professional skills and promote within the state system, often resulting in pay increases.

Part 2: Quality of Program

A. Evidence of Effectiveness

Course Scheduling

Prior to the 2013 Program Review, scheduling was cobbled together by multiple parties in the Business program resulting in time and day conflicts with other required courses in the program. This directly impacted enrollment due to the fact that popular classes that were required for degrees were offered at the same time and same day, thus preventing students from enrolling in needed courses.

Following the 2013 Program Review, scheduling of classes was done by the Carson full-time faculty member. A two-year course rotation was created and was maintained until 2019-2020 (See Appendix Three).

When that faculty member went on sabbatical, scheduling reverted back to the prior method basing the next semester's classes on the prior year's offering and merely changing the dates. While efficient, this method does not take market needs and wants or organizational capacity into consideration.

Since 2020-2021, the scheduling has been done at the PAT Division Director level with no input from the Business faculty.

In Fall 2020, 50 courses were offered; 14 courses were canceled due to low enrollment reflecting a 28 percent cancelation rate.

Faculty Workload

The required full-time faculty workload is five classes per semester. Throughout the Program Review period, two out of the three full-time tenured faculty members taught an additional two classes each semester and one to three classes overload

during the summer. The third full-time Business Professor was placed on a Performance Improvement Plan by the CTE Director. He was later terminated for non-performance. The position remains empty.

In 2020, the PAT Division Director discontinued the practice of permitting full-time faculty to teach two overloads per term. This, and the retirement of the Accounting professor, has resulted in a predominantly adjunct teaching staff.

The overreliance on adjuncts, while cost efficient, degrades the quality of the educational experience WNC Business students receive. In the fall of 2020, 583 students were enrolled in Business courses. Eighty three percent of the classes were taught by 16 adjuncts. This accounts for over 80 percent of students.

Instructional Mode

In the 2013 Program Review, distance and online learning were identified as weaknesses for the Business programs. In 2020 COVID forced the College to move into the online learning environment. Although the shift was forced, online learning has become the primary instructional mode in the Business program.

In Fall 2020, 24 courses out of 34 were taught online. Of particular note is the fact that of the 19 classes offered face-to-face, eight (42%) were canceled due to low enrollment while seven out of 31 online classes (22%) were canceled for the same reason.

Class Size

Fall 2020 face-to-face class ranged in size from one to 23 with an average size of 13 students. Online classes ranged in size from six to 38 with an average of 19.

See Appendix Four: Fall 2020 Enrollment Reports.

Systematic Assessment

The last Program Review was conducted in 2013. Since then, no effort has been put into reviewing required courses, revising Student Learning Objectives, updating the Business Core, changing degree requirements, or making changes to course outlines.

As an outcome of this Program Review, all SLO's, course requirements, and course sequences should be updated and reflected in the College's promotional and informational materials in the fall of 2023.

B. Evidence of Satisfaction

Students are encouraged to complete course evaluations every term for every class. The response rate on these reviews is reportedly quite low. Full-time faculty do not have access to the course reviews of adjuncts, further removing tenured Business faculty from monitoring the quality of the Business program.

Additionally, data provided in previous sections of this report relating to total business courses taken, majors declared, and graduates show that numbers in these areas have been declining throughout the reporting period. This may be as a result of changing economy (relative prosperity until COVID) or it may indicate a need for the College to invest marketing fund to increase the program's visibility.

It must be noted, the institutional shift from "ready to work" to bachelor's degree path as indicated by the abovementioned AAS cannibalization of the College's AAS-Business has had an obvious impact on the Business program.

C. Certifications/Licenses

The only nationally recognized certification available within the Business Program is the Certified Bookkeeper Course. This certificate offers skills for working professionals and students who wish to advance their career in the bookkeeping profession. Upon successful completion, students will be able to sit for a national exam administered by the American Institute of Professional Bookkeepers (AIPB). Upon passing the exam and completing two years of bookkeeping experience, individuals earn the right to call themselves a “Certified Bookkeeper”.

This certification program, which is offered as an elective in the accounting emphasis and Certificate of Bookkeeping, has been offered every academic year. Over the past five years, enrollment has reached a high of five and a low of two with an average completion of four students. It is non-transferable for an NSHE baccalaureate degree and non-applicable towards an AA or AS degree.

D. Enrollment Trends 2014 to 2020

- a. What student demographics and enrollment trends are most notable?

The Associate in Applied Science degree has been awarded primarily to non-minority students as is evidenced by the data presented in Exhibit F below.

Interestingly, the Associate in Business shows an increase in minority student degree completion showing nearly 40 percent of the degrees awarded going to minority students.

Exhibit F						
WNC Degrees and Certificates Awarded – Five years Combined						
Degree	Description	CIP Code	Percent Minority	Percent Non-minority	Percent Women	Percent Men
AAS	Business -Accounting	52.0301	8.1	91.9	91.9	8.1
AAS	Business -Management	52.0201	20.0	80.0	85.0	15.0
AAS	General Business Emphasis	52.0101	15.2	84.8	73.9	26.1
AB	Associate of Business	52.0201	39.6	60.4	54.7	45.3
CT	Business	52.0101	21.1	78.9	78.9	21.1
CT	Business – Bookkeeping Cert.	52.0302	20.0	80.0	65.0	35.0
CT	Retail Management	52.1203	0.0	100.0	0.0	100.0

- b. Source: IRE Website Degree Trends https://intranet.wnc.edu/departments/ir_ir/data-trends.php

Overall enrollment for Business Programs has declined. As is evident in the table on the following page, the most significant decline in enrollment and number of classes as been at the outreach centers in Fallon and Douglas where the College offers classes to primarily high school students pursuing a dual degree.

Enrollment Trends 2014 to 2020

Campus	Term	F 14	Sp 15	Su 15	F 15	Sp 16	Su 16	F 16	Sp 17	Su 17	F 17	Sp 18	Su 18	F 18	Sp 19	Su 19	F 19	Sp 20
Carson	Total Enrolled	457	362	6	349	322	14	269	230	8	247	211	22	195	110	36	166	104
	Number. of Courses	30	32	4	23	22	2	23	21	3	21	17	6	22	13	7	20	11
Douglas	Total Enrolled	16	2		8	2		12	0		4	0					5	0
	Number. of Courses	3	2		2	1		4	1		2	1					1	2
Fallon	Total Enrolled	67	35		51	39		44	49		17	21		15	44	1	5	26
	Number. of Courses	12	11		6	6		7	5		5	3		4	5	1	3	3
Web	Total Enrolled	410	479	113	507	518	27	474	409	28	417	363	39	378	412	45	361	429
	Number. of Courses	17	18	5	23	20	2	23	24	3	29	31	5	21	34	6	30	25
Total	Total Enrolled	950	878	119	915	882	42	799	688	36	685	595	61	588	566	82	537	578
	Number. of Courses	62	63	9	54	49	4	57	54	6	57	52	11	47	54	14	59	44

Appendix Five provides the Enrollment Reports for Spring 2013 through Spring 2021.

c. What groups constitute the program’s main demographic?

For the period of 2015-2016 to 2019-20 women accounted for over 75 percent of Business Majors (men nearly 24 percent).

Program Majors in Requirements by Gender and Subject		
	Percentage Men	Percentage Women
Accounting	22	78
Business	29	71
Management	27	73
Marketing	30	70

While minorities accounted for 20 percent of Business Majors.

Program Majors in Requirements by Minority Status and Subject		
	Percentage Men	Percentage Women
Accounting	20	80
Business	21	79
Management	11	89
Marketing	24	76

The College has been targeting first-time, full-time students over this reporting period. The Business Program historically has served a large number of non-traditional students. The current focus on non-traditional students has resulted in no marketing activity targeted at non-traditional students. An increased emphasis in the College's marketing efforts in support of the Business Program may be beneficial.

See Appendix Six – Program Majors in Program Requirements by Gender and Minority Status, 2015-2016 to 2019-20 Combined.

d. What efforts have been made to recruit students?

Virtually all recruiting effort comes from the counselors and the recruiting staff. Among the recruitment activities the Business faculty have participated in are the following:

- Faculty members have written articles for the local newspapers promoting the Business Program and the benefits associated with it.
- Faculty members have conducted site visits to area high schools to talk with students about the opportunities available to them within the WNC Business Program.
- Classes have been scheduled with an eye to avoiding course overlaps. Additionally, courses are offered in face-to-face and online formats.
- Multiple sections of high demand courses are offered. These include Intro to Business, Macro and Microeconomics, and Accounting.

- e. What initiatives have been undertaken to increase FTE?

Increasing student FTE while at the same time losing full-time faculty positions is extremely difficult. Until 2019, the three full-time Business faculty members taught more than their standard five classes per semester requirement in order to make up for the lack of full-time and qualified part-time faculty member. One faculty member went so far as to increase his enrollment cap from 30 students to 50 students in an effort to accommodate more students. This compromises the quality of the course and the attention the faculty can provide to individual students in the class.

For the 2019-2020 school year, only two full-time faculty members were teaching in the Business Program. That year, one was on sabbatical, so the remaining professor had to cover all administrative responsibilities in the Program. He retired the following year (2020-2021), leaving one full-time professor to cover all administrative activities.

- f. What initiatives have been undertaken to improve student retention?

While there have been efforts at the institutional level, there have been no Business Program specific initiatives. Individual full-time faculty members have employed various tactics to connect with students and help when possible. The increased reliance on adjunct faculty has compounded an already bad situation. Most are not aware of the retention issue and have little or no commitment to increasing retention. There is no expectation that part-time faculty would advise or counsel students.

Adjuncts are not included in any Business Program or Division orientation, meetings, trainings, or development in their role as Business faculty. Most don't know anything about the program beyond the class they are teaching. They do not know who the full-time faculty are or how to contact them (similarly, as noted above, the full-time faculty are not involved in their recruitment, selection or onboarding, and in most cases don't know who the adjuncts are either).

At best adjuncts are hired, told to teach a class, provided with a course outline, and sent on their way. If they are teaching online, they are provided a user account and minimal training on how to use Canvas (the College's LMS) and sent to the College library for assistance in creating their classes. Full-time faculty have no access to adjunct taught classes, so there is no Business Program quality assessment.

The fact that faculty, full-time and part-time, do not advise students further exacerbates this issue. Outside of the classroom, there is no requirement that students meet with faculty.

The issue is not just on the College side. Many students who take classes part-time, stop out of classes to pursue job opportunities as they arise. They may or may not return to college at a later time. Those "non-traditional" student with families, may find that family commitments are a higher priority than completing a class or degree.

E. Need for the Program

On a macro level, the demand for Business programs has never been greater. Degrees in Business Administration, Accounting, Management, and Marketing are all within the top ten most desired degrees in today's job market. (See Appendix Seven.)

It must be acknowledged, the high demand degrees listed above are predominantly for bachelor's degrees. To address this demand, in 2020, the PAT Division Director created the BAS Organizational Leadership degree. This program, designed to create a pathway for WNC students to obtain a bachelor's degree without having to go to UNR, is taught entirely by adjuncts in an eight-week online format. Further review of the BAS is outside the scope of the present Program Review.

F. Curriculum Review Report

As part of the present Program Review process, a Curriculum Review Report has been created. (See the attached Curriculum Review Report document).

To date, the College's Curriculum Committee has not reviewed the report.

G. Internal and External Reviewers Reports

The Internal Reviewer for the Business Program Review was Jason Spohr, MBA, Instructor, Automotive Technology.

The External Reviewer for the Business Program Review was Dr. Charles Iliff, Professor Emeritus, College of Business and Public Policy, University of Alaska-Anchorage.

There reports are reproduced on the following pages.

Business Program Review Internal Review
Jason Spohr, MBA, Instructor, Automotive Technology

Program Strengths and Weaknesses

The Business program at Western Nevada College has historically proven to be quite expansive and has strived to meet the needs of students by offering a wide variety of classes and multiple degree paths. The Business program is the largest program in the Professional and Applied Technology division in both number of students served as well as FTE. Its greatest strength is the ability to offer multiple learning opportunities with a "something for everyone" mindset which can certainly benefit any student who chooses to take a Business pathway in their educational endeavors.

As noted on page eight of the review, a multitude of options is available to students who will undoubtedly have different goals and desired outcomes while pursuing their educational process.

Students seeking career opportunities are offered several pathways to set them up for success in the Business arena. The AAS-Business degree with choice of emphasis (Accounting, Business or Management) serves to satisfy those who understand and appreciate the value of a two year degree that would allow them entry to the workforce in an entry level capacity. As with the program I teach, (Automotive Technology) I find that employers appreciate the initiative and follow through that a degree demands but realize the value of entering the workforce in a relatively short amount of time. The offering of a Certificate of Achievement is effective in giving students the opportunity to learn the basics of business practices and may serve as a platform to determine if this is the right career path for them. The recent addition of the Associate in Business (AB) degree is effective in satisfying those who wish to pursue a four year degree and is fully transferable to Nevada state universities. Finally, the breadth and depth of offerings can be useful to students who may want to hone their Business skills in a particular area by taking a few classes to either promote career advancement or increase their knowledge in emerging issues in the business world.

Several weaknesses have been revealed in the review as well as subsequent suggestions which should be taken into consideration. Although some of the issues are common throughout other programs at WNC, others are specific to the business department. I will focus on the program specific weakness as I believe that this is the purpose and essence of this review.

The first and most glaring issue is the drastic decrease in full-time tenure track faculty in the Business department. With the sheer number of students enrolled in the business program (averaging in the hundreds) it seems unlikely that one full-time tenured instructor would be able to meet the demands of a program of this magnitude. Adjunct faculty have been a mainstay of the WNC workforce and clearly provide an effective means of instruction that is budget friendly. However, full time faculty can provide the cohesiveness and unity of a given program and are far more connected with administration. In addition, they are able to be tasked with the vast number of duties that help keep a program running smoothly. Many of the contractual obligations vital for program success fall through the cracks when relying primarily on an adjunct instructional staff.

A second area of concern is the apparent cannibalization of the AAS pathway in favor of the AB degree. Although experimenting with changes in degree offerings is always a step in the right

direction, it appears that this change does not appear to be the healthiest choice for the growth and survival of the Business program. The numbers from exhibit B on page 10 of the review are quite revealing. When the AB degree was offered in 2017, there was a clear and massive decline in the number of AAS degrees awarded and it has yet to rebound. It seems to be a robbing Peter to pay Paul approach which has resulted in the decline of four AAS degree paths. The AB pathway is clearly popular but has served to alienate those who are not anticipating matriculation to a four year institution. This appears to be a clear recipe for shrinking a program and does not match the paradigm of the population we have historically served.

The third area of weakness identified in the review is the lack of responsibility given to the lone remaining full time faculty member. The Division Director always will have the ultimate control of any and all activities concerning a given program. That is not to say that this is the ideal scenario for the success of a program. Delegating scheduling, hiring recommendations, curriculum suggestions and determination of degree offerings should be part of the duties of full time faculty for as long as they are willing and capable of doing so. The review has revealed that scheduling of business classes has been done in a manner that does not reflect the desires or opinions of the tenured faculty member who most likely knows the program best. Of course in a sabbatical leave situation, the Director should be able to fill in the gaps of any necessary actions required. It appears however that the input of a seasoned and highly competent lead instructor has not been sought in regards to any decisions that could lead to the improvement of the current situation. This may be convenient on many levels but does not serve to promote unity and trust within the program.

Strategies for Improvement

The overall mission to identify the target market for the Business program should be first and foremost. The WNC Business program seems to have great potential but has seemed to be spread-too-thin to be able to do any one thing with great success.

Pursue adding additional full-time tenure track faculty who can work as a team to assume the responsibility of bringing identity and direction to the program as well as lightening the burden of the Director to perform tasks that could and should be done by full-time personnel. Adjunct faculty members will always be an important part of any program but they need to know who is leading them. Putting to use the talents and leadership of full time faculty in the capacity in which they are trained is a win win situation. After all, this is what business people do.

If the AAS degree is to remain, consider the removal of the multiple emphases. Clearly there are many facets and nuances in the area of business. These can be pursued at the Bachelor's level. A wide variety of offerings may seem appealing to students but four different degree paths for the AAS seems like the program is suffering from being a Jack of all trades and a master of none.

Evaluation of the internal and external review process/self-study document

In reviewing the Business Program Review materials, I learned a lot about the program and the issues they face in the changing market. Similar to the Automotive program, they face challenges that differ from those in the Liberal Arts Division. I share many of the concerns which revolve around enrollment and staffing. It has been a pleasure to complete this review and look forward to using it as a sounding board to make improvements in my own program.

Business Program Review External Review
Dr. Charles Iliff, Professor Emeritus,
College of Business and Public Policy, University of Alaska-Anchorage

Memorandum

To: Dr. Robert Whitcomb
Professor Business, Management, and Marketing
Western Nevada Community College

From: Dr. Charles Iliff
Professor Emeritus
University of Alaska - Anchorage
College of Business and Public Policy

Thank you for the invitation to review the Business Program Review Report 2013-2019. In my 21-year tenure with Anchorage Community College and University of Alaska Anchorage, I have participated in many undergraduate and graduate program reviews and accreditation reviews including for AACSB accreditation reviews. In preparation for my review, I polled several my recent graduates to ascertain what knowledge and skills from their business education have proven most valuable in their management careers. Additionally, I tried to ascertain the impact of the pandemic on their organizations. The most two reported impacts of the pandemic were that the "Hybrid" workplace model is here to stay and the most difficult challenges are in the areas of Human Resources. Organizations with strong HR components have been much more able to change course as needed.

I sense WNC has not recently been well cared for. Clearly declines in enrollments and loss of FT faculty positions are never easy. Historically, in declining economic times, higher education, particularly professional programs experience growth and expansion. Nationwide, during the pandemic this has not happened. What are some choices for WNC? I suggest that launching a bold initiative is timely, and that perhaps the initiative should be focused on HR, which could easily be strengthened at WNC. Many organizations are struggling with employee turnover and developing strategies for the hybrid workplace. Training and team building programs have suffered and many employees have been reduced to performing "Input-Process-Output" activities with little or no organizational activities. Perhaps among WNC's many niches, an innovative HR program could help rebuild the department.

To the report itself.

Page 4, Part 1, A – Although adjunct faculty are important in any business program as they bring current expertise and real-world experience, without sufficient full-time faculty to steer the program, it will be rudderless and unable to respond to the rapidly changing workplace dynamics. We know that work has forever changed. Does WNC have a vision to respond to these monumental changes?

Page 5, C. These are reasonable maintenance outcomes for a small faculty, but nothing innovative.

Page 8, D. The "RIGHT CHOICE" narrative is well stated. What is the RIGHT CHOICE for post pandemic organizations? Given the past two years of traumatic change, has WNC assessed its current customer base and "not-yet" customer base?

Page 9, b. This section summarizes the weakness of WNC's situation. Without an injection of new fulltime faculty, the Business program will continue to atrophy and cannot produce bold results for its constituents.

Pages 10-12 This section describes stagnation and cannibalization and overall academic content weakness, as the AB program appears considerably less rigorous than the AAS.

Page 13. While fully understanding the reasons behind the move to online instruction, this characterizes the difference between a collection of courses and a strong program. I would suggest innovative changes at both the front and back end of the program. Perhaps the Introduction to Business course (BUS 101) could be energized to attract more committed students and the class only be taught face-to-face. Could local businesses be encouraged to sponsor scholarships and offer visits to businesses and make guest lecturer appearances? Could internships be required or at least be given higher value than an online class? One of the well-known problems of primarily online instruction, is that students do not develop a sense of community. Has WNC considered a face-to face capstone course, where the one faculty member would know matriculating students and be able to guide them toward internships and positive career development.

Page 14/15. I understand the attraction for liberal arts students to participate in high school to college "bridge" programs. For a business program, however, I think this strategy is of dubious value. Many WNC students, from other niches, do not fit this model. In terms of quality assessment, does WNC have a strategy for dealing with post pandemic students who are almost certainly under-prepared? Again, the post-pandemic world will be full of people problems, not just supply chain problems. Will WNC be able to offer its communities some solutions via an innovative HR program?

Page 18/19. As a "pass through"/articulation institution, has WNC deserted its other niches?

Page 20. A. A two-year course rotation is a solid statement to students that they can expect to complete their programs on time.

Page 21. 80 percent of classes taught by adjuncts is way too high a percentage! Students never develop continuity.

Page 23, B. This section describes traditional approaches to curriculum development or lack of it. It produced traditional results.

Page 30. What will rural Nevada economy need post pandemic? What can WNC Business Program offer its various constituencies to help with future community development?

Page 33. 2022 is a critical time for the WNC Business Program. Will it "lead" or "follow"? Regrettably this report suggests at best "follow". I suggest that society is screaming for face-to-face instruction witnessed by people being willing to participate in higher risk activities and getting sick. Society is tired on being forced to a preponderance of being on-line.

As a dedicated optimist, I see some positive options for WNC Business program. However, those answers will not be found in traditional curriculum management philosophies. Bold change is needed and very possible!

H. Findings and Recommendations

Findings

The Business Program at WNC is in decline. The lack of full-time tenured faculty forces the Program to rely on part-time instructors to deliver courses. Regardless of their qualifications, adjuncts' responsibilities start and end in the classroom. They receive no orientation to the College, the Business Program, or the Business curriculum. At best they know their subject. At worst, they don't know how to teach.

Recommendations

1. First and foremost, a concerted effort needs to be made to increase the number of full-time, tenure track faculty in the Business Program. This one action will address many of the weaknesses in the Business program, while also improving student academic success.

This was the number one recommendation in the 2013 Business Program Review when there were three full-time tenured faculty. It remains the top priority as the number of full-time tenure track faculty has decreased by 66 percent during the present Program Review period bringing the total number to one.

2. If the College continues its heavy reliance on adjunct instructors to teach in the Business program, Program level standards and procedures must be put in place immediately that will assist in the recruitment, hiring, training, evaluation, and development of adjunct instructors. At this time, there is no training or development provided to adjunct instructors. Similarly, recruitment, hiring, and evaluation are the sole purvey of the Division Director with no full-time faculty input.

3. The Student Learning Objectives for the Business Program must be revisited and revised to, at minimum, address the Associate in Business degree.
4. The Associate of Applied Science-Business degree must be reconfigured and repositioned. As is evidenced above, demand for the AAS-B has declined dramatically with the College's shift from career preparation/advancement to bachelor degree pathways. If the AAS-B degree is to be maintained, a new market must be identified and developed. This market may be adult learners who bring significant learning from life experience. This suggests that a formalize "credit for prior learning" degree be developed and marketed.
5. The Business Core was created for the AAS-Business. The PAT Division Director has stated the Business Core will not be added to the Associate in Business degree. Therefore, if the AAS degree is to be reconfigured, the role of the Business Core must be considered.
6. All classes and sections in the Business Program must adopt a uniform course syllabi and common texts to address the learning goals of the course and program.
7. Since these administrative details must be performed by qualified full-time Business faculty, it is recommended that the tenured Business faculty member be provided multiple overloads to develop the above-mentioned items.

**Appendix One
Required Course Matrix**

Student Learning Objectives by Course

Associate in Applied Science in Business – Accounting Emphasis

Associate in Applied Science in Business – General Business Emphasis

Associate in Applied Science in Business – Management Emphasis

Associate in Business

Certificate of Achievement – Bookkeeping

Certificate of Achievement – General Business

Required Course Matrix

Associate in Applied Science in Business – Accounting Emphasis Student Learning Objectives by Course

Upon completing an Associate in Applied Science degree with an Accounting emphasis from Western Nevada College, the student will be able to:

1. Articulate and demonstrate their personal employment related knowledge, skills, and abilities. (ISLO 1, 6, 7)
2. Evaluate the impacts of various economic systems and policies. (ISLO 1, 6)
3. Summarize, record, analyze, interpret, and communicate accounting and financial information for decision making. (ISLO 3)
4. Devise, implement, and evaluate managerial decisions, actions, and outcomes. (ISLO 6)
5. Apply technology to aid in communications and decision making. (ISLO 4)
6. Present research, data, analysis, and conclusions through written and oral means. (ISLO 2,4)
7. Describe the changing landscape of the global market and its impact on the United States. (ISLO 1, 5, 7)
8. Summarize the social, ethical, legal, and diversity issues within contemporary business. (ISLO 1, 4, 5, 6, 7)
9. Develop Business, Financial, and Marketing Plans for established and emerging businesses. (ISLO 2, 3, 4, 7)

Required Courses		Outcomes								
Course Number	Course Name	1	2	3	4	5	6	7	8	9
ACC 201	Financial Accounting	3	1	3	2	2	3	1	1	3
ACC 202	Managerial Accounting	3	1	3	2	2	3	1	1	3
ACC 203	Intermediate Accounting I	3	1	3	2	2	3	1	1	3
ACC 220 OR ACC 220	Microcomputer Accounting Systems OR Introduction to QuickBooks	3	1	3	2	2	3	1	1	3
BUS 101	Introduction to Business	3	3	3	3	3	3	3	3	3
BUS 273	Business Law I	3	2	1	2	1	2	2	3	2
BUS 299	Business Capstone	3	3	3	3	3	3	3	3	3
ECON 102	Principles of Microeconomics	3	3	2	1	1	2	2	3	1
ECON 103	Principles of Macroeconomics	3	3	2	1	1	2	2	3	1
MGT 201	Principles of Management	3	1	1	3	2	2	2	3	2
MKT 210	Marketing Principles	3	1	1	2	2	2	2	2	3

Assign a value to which each outcome is represented in each required class:

1 = slightly, 2 = moderately, 3 = significantly

Required Course Matrix

Associate in Applied Science in Business – General Business Emphasis Student Learning Objectives by Course

Upon completing an Associate in Applied Science degree with a General Business Emphasis from Western Nevada College, the student will be able to:

1. Articulate and demonstrate their personal employment related knowledge, skills, and abilities. (ISLO 1, 6, 7)
2. Evaluate the impacts of various economic systems and policies. (ISLO 1, 6)
3. Summarize, record, analyze, interpret, and communicate accounting and financial information for decision making. (ISLO 3)
4. Devise, implement, and evaluate managerial decisions, actions, and outcomes. (ISLO 6)
5. Apply technology to aid in communications and decision making. (ISLO 4)
6. Present research, data, analysis, and conclusions through written and oral means. (ISLO 2,4)
7. Describe the changing landscape of the global market and its impact on the United States. (ISLO 1, 5, 7)
8. Summarize the social, ethical, legal, and diversity issues within contemporary business. (ISLO 1, 4, 5, 6, 7)
9. Develop Business, Financial, and Marketing Plans for established and emerging businesses. (ISLO 2, 3, 4, 7)

Required Courses		Outcomes								
Course Number	Course Name	1	2	3	4	5	6	7	8	9
ACC 201	Financial Accounting	3	1	3	2	2	3	1	1	3
ACC 202	Managerial Accounting	3	1	3	2	2	3	1	1	3
BUS 101	Introduction to Business	3	3	3	3	3	3	3	3	3
BUS 273	Business Law I	3	2	1	2	1	2	2	3	2
BUS 299	Business Capstone	3	3	3	3	3	3	3	3	3
ECON 102	Principles of Microeconomics	3	3	2	1	1	2	2	3	1
ECON 103	Principles of Macroeconomics	3	3	2	1	1	2	2	3	1
MGT 201	Principles of Management	3	1	1	3	2	2	2	3	2
MKT 210	Marketing Principles	3	1	1	2	2	2	2	2	3

Required Course Matrix

Associate in Applied Science in Business – Management Emphasis Student Learning Objectives by Course

Upon completing an Associate in Applied Science degree with a Management Emphasis from Western Nevada College, the student will be able to:

1. Articulate and demonstrate their personal employment related knowledge, skills, and abilities. (ISLO 1, 6, 7)
2. Evaluate the impacts of various economic systems and policies. (ISLO 1, 6)
3. Summarize, record, analyze, interpret, and communicate accounting and financial information for decision making. (ISLO 3)
4. Devise, implement, and evaluate managerial decisions, actions, and outcomes. (ISLO 6)
5. Apply technology to aid in communications and decision making. (ISLO 4)
6. Present research, data, analysis, and conclusions through written and oral means. (ISLO 2,4)
7. Describe the changing landscape of the global market and its impact on the United States. (ISLO 1, 5, 7)
8. Summarize the social, ethical, legal, and diversity issues within contemporary business. (ISLO 1, 4, 5, 6, 7)
9. Develop Business, Financial, and Marketing Plans for established and emerging businesses. (ISLO 2, 3, 4, 7)

Required Courses		Outcomes								
Course Number	Course Name	1	2	3	4	5	6	7	8	9
ACC 201	Financial Accounting	3	1	3	2	2	3	1	1	3
ACC 202	Managerial Accounting	3	1	3	2	2	3	1	1	3
BUS 101	Introduction to Business	3	3	3	3	3	3	3	3	3
BUS 273	Business Law I	3	2	1	2	1	2	2	3	2
BUS 299	Business Capstone	3	3	3	3	3	3	3	3	3
ECON 102	Principles of Microeconomics	3	3	2	1	1	2	2	3	1
ECON 103	Principles of Macroeconomics	3	3	2	1	1	2	2	3	1
MGT 201	Principles of Management	3	1	1	3	2	2	2	3	2
MGT 235	Organizational Behavior	3	1	1	2	2	2	1	2	3
MGT 283	Introduction to Human Resource Management	3	1	1	2	2	2	1	1	3
MKT 210	Marketing Principles	3	1	1	2	2	2	2	2	3

Required Course Matrix

Associate in Business Student Learning Objectives by Course

Upon completing an Associate in Business from Western Nevada College, the student will be able to:

1. Articulate and demonstrate their personal employment related knowledge, skills, and abilities. (ISLO 1, 6, 7)
2. Evaluate the impacts of various economic systems and policies. (ISLO 1, 6)
3. Summarize, record, analyze, interpret, and communicate accounting and financial information for decision making. (ISLO 3)
4. Devise, implement, and evaluate managerial decisions, actions, and outcomes. (ISLO 6)
5. Apply technology to aid in communications and decision making. (ISLO 4)
6. Present research, data, analysis, and conclusions through written and oral means. (ISLO 2,4)
7. Describe the changing landscape of the global market and its impact on the United States. (ISLO 1, 5, 7)
8. Summarize the social, ethical, legal, and diversity issues within contemporary business. (ISLO 1, 4, 5, 6, 7)
9. Develop Business, Financial, and Marketing Plans for established and emerging businesses. (ISLO 2, 3, 4, 7)

Required Courses		Outcomes								
Course Number	Course Name	1	2	3	4	5	6	7	8	9
ACC 201	Financial Accounting	3	1	3	2	2	3	1	1	3
ACC 202	Managerial Accounting	3	1	3	2	2	3	1	1	3
ECON 102	Principles of Microeconomics	3	3	2	1	1	2	2	3	1
ECON 103	Principles of Macroeconomics	3	3	2	1	1	2	2	3	1
ECON 261	Principles of Statistics I	3	1	2	2	2	2	1	1	1
ECON 262	Principles of Statistics II	3	1	2	2	2	2	1	1	1
MKT 210	Marketing Principles	3	1	1	2	2	2	2	2	3

Required Course Matrix

Certificate of Achievement - Bookkeeping Student Learning Objectives by Course

Upon completing a Certificate of Achievement – Bookkeeping from Western Nevada College, the student will be able to:

1. Articulate and demonstrate their personal employment related knowledge, skills, and abilities. (ISLO 1, 6, 7)
2. Evaluate the impacts of various economic systems and policies. (ISLO 1, 6)
3. Summarize, record, analyze, interpret, and communicate accounting and financial information for decision making. (ISLO 3)
4. Devise, implement, and evaluate managerial decisions, actions, and outcomes. (ISLO 6)
5. Apply technology to aid in communications and decision making. (ISLO 4)
6. Present research, data, analysis, and conclusions through written and oral means. (ISLO 2,4)
7. Describe the changing landscape of the global market and its impact on the United States. (ISLO 1, 5, 7)
8. Summarize the social, ethical, legal, and diversity issues within contemporary business. (ISLO 1, 4, 5, 6, 7)
9. Develop Business, Financial, and Marketing Plans for established and emerging businesses. (ISLO 2, 3, 4, 7)

Required Courses		Outcomes								
Course Number	Course Name	1	2	3	4	5	6	7	8	9
ACC 135	Bookkeeping I	3	1	3	1	1	2	1	1	2
ACC 201	Financial Accounting	3	1	3	2	2	3	1	1	3
BUS 101	Introduction to Business	3	3	3	3	3	3	3	3	3
MGT 201	Principles of Management	3	1	1	3	2	2	2	3	2

Required Course Matrix

Certificate of Achievement – General Business Student Learning Objectives by Course

Upon completing a Certificate of Achievement – General Business from Western Nevada College, the student will be able to:

1. Articulate and demonstrate their personal employment related knowledge, skills, and abilities. (ISLO 1, 6, 7)
2. Evaluate the impacts of various economic systems and policies. (ISLO 1, 6)
3. Summarize, record, analyze, interpret, and communicate accounting and financial information for decision making. (ISLO 3)
4. Devise, implement, and evaluate managerial decisions, actions, and outcomes. (ISLO 6)
5. Apply technology to aid in communications and decision making. (ISLO 4)
6. Present research, data, analysis, and conclusions through written and oral means. (ISLO 2,4)
7. Describe the changing landscape of the global market and its impact on the United States. (ISLO 1, 5, 7)
8. Summarize the social, ethical, legal, and diversity issues within contemporary business. (ISLO 1, 4, 5, 6, 7)
9. Develop Business, Financial, and Marketing Plans for established and emerging businesses. (ISLO 2, 3, 4, 7)

Required Courses		Outcomes								
Course Number	Course Name	1	2	3	4	5	6	7	8	9
ACC 135	Bookkeeping I	3	1	3	1	1	2	1	1	2
ACC 201	Financial Accounting	3	1	3	2	2	3	1	1	3
BUS 101	Introduction to Business	3	3	3	3	3	3	3	3	3
MGT 201	Principles of Management	3	1	1	3	2	2	2	3	2
MKT 210	Marketing Principles	3	1	1	2	2	2	2	2	3

**Appendix Two
Business Program Degree Templates**

Associate in Applied Science in Business – Accounting Emphasis

Associate in Applied Science in Business – General Business Emphasis

Associate in Applied Science in Business – Management Emphasis

Associate in Business

Certificate of Achievement – Bookkeeping

Certificate of Achievement – General Business

ASSOCIATE IN APPLIED SCIENCES: BUSINESS - ACCOUNTING EMPHASIS		
TOTAL REQUIREMENTS	60 Units	
CORE BUSINESS REQUIREMENTS	30 Units	UNITS
ACC 201	Financial Accounting	3
ACC 202	Managerial Accounting	3
BUS 101	Introduction to Business	3
BUS 273	Business Law I	3
BUS 299	Business Capstone	3
ECON 102	Principles of Microeconomics	3
ECON 103	Principles of Macroeconomics	3
IS 101 or IS 201	Introduction to Information Systems or Computer Applications	3
MGT 201	Principles of Management	3
MKT 210	Marketing Principles	3
ACCOUNTING REQUIREMENTS	6 Units	
ACC 203	Intermediate Accounting I	3
ACC 220 or ACC 223	Microcomputer Accounting Systems or Introduction to QuickBooks	3
ACCOUNTING ELECTIVES	9 Units	
CHOOSE 9 UNITS FROM:		
ACC 105	Taxation for Individuals	3
ACC 180	Payroll & Employee Benefit Accounting	3
ACC 204	Intermediate Accounting II	3
ACC 220	Microcomputer Accounting Systems	3
ACC 223	Introduction to QuickBooks	3
ACC 261	Governmental Accounting	3
ACC 290	Certified Bookkeeper Course	6
ACC 295	Work Experience I	3
COT 262	Intermediate Spreadsheets Concepts	3
ECON 261*	Principles of Statistics I	3
ECON 262*	Principles of Statistics II	3

GENERAL EDUCATION REQUIREMENTS	15 Units	
English/Communications Requirement (must include a writing course):		
BUS 107 and BUS 108 are recommended for students in the AAS degree program.		6
ENG 101 and ENG 102 are recommended for students who plan to transfer and enroll in a bachelor's degree program.		
Mathematics Requirement: BUS 109 is recommended for students in the AAS degree.		3
Science Requirement		3
U.S. and Nevada Constitution Requirement		3

ASSOCIATE IN APPLIED SCIENCES: BUSINESS - GENERAL BUSINESS		
TOTAL REQUIREMENTS	60 Units	UNITS
CORE BUSINESS REQUIREMENTS	30 Units	
ACC 201	Financial Accounting	3
ACC 202	Managerial Accounting	3
BUS 101	Introduction to Business	3
BUS 273	Business Law I	3
BUS 299	Business Capstone	3
ECON 102	Principles of Microeconomics	3
ECON 103	Principles of Macroeconomics	3
IS 101 or IS 201	Introduction to Information Systems or Computer Applications	3
MGT 201	Principles of Management	3
MKT 210	Marketing Principles	3
GENERAL BUSINESS ELECTIVES	15 Units	
<i>CHOOSE 15 UNITS FROM:</i>		
	ACCOUNTING (ACC)	
	BUSINESS (BUS)	
	ECONOMICS (ECON)	
	FINANCE (FIN)	
	MANAGEMENT (MGT)	
	MARKETING (MKT)	
	REAL ESTATE (RE)	
GENERAL EDUCATION REQUIREMENTS	15 Units	
English/Communications Requirement (must include a writing course):		6
BUS 107 and BUS 108 are recommended for students in the AAS degree program.		
ENG 101 and ENG 102 are recommended for students who plan to transfer and enroll in a bachelor's degree program.		
Mathematics Requirement: BUS 109 is recommended for students in the AAS degree.		3
Science Requirement		3
U.S. and Nevada Constitution Requirement		3

ASSOCIATE IN APPLIED SCIENCES: BUSINESS - MANAGEMENT EMPHASIS		
TOTAL REQUIREMENTS	60 Units	UNITS
CORE BUSINESS REQUIREMENTS	30 Units	
ACC 201	Financial Accounting	3
ACC 202	Managerial Accounting	3
BUS 101	Introduction to Business	3
BUS 273	Business Law I	3
BUS 299	Business Capstone	3
ECON 102	Principles of Microeconomics	3
ECON 103	Principles of Macroeconomics	3
IS 101 or IS 201	Introduction to Information Systems or Computer Applications	3
MGT 201	Principles of Management	3
MKT 210	Marketing Principles	3
MANAGEMENT DEGREE REQUIREMENTS	6 Units	
MGT 235	Organizational Behavior	3
MGT 283	Introduction to Human Resource Management	3
MANAGEMENT ELECTIVES	9 Units	
<i>CHOOSE 15 UNITS FROM THE FOLLOWING:</i>		
	BUSINESS (BUS)	
	MANAGEMENT (MGT)	
	MARKETING (MKT)	

GENERAL EDUCATION REQUIREMENTS	15 Units	
English/Communications Requirement (must include a writing course):		
BUS 107 and BUS 108 are recommended for students in the AAS degree program.		6
ENG 101 and ENG 102 are recommended for students who plan to transfer and enroll in a bachelor's degree program.		
Mathematics Requirement: BUS 109 is recommended for students in the AAS degree.		3
Science Requirement		3
U.S. and Nevada Constitution Requirement		3

ASSOCIATE of BUSINESS	
TOTAL REQUIREMENTS: 60 Units	
BUSINESS REQUIREMENTS - 27 Units	
<u>ACC 201 - Financial Accounting</u>	3
<u>ACC 202 - Managerial Accounting</u>	3
<u>BUS 101 - Introduction to Business</u>	3
<u>ECON 102 - Principles of Microeconomics</u>	3
<u>ECON 103 - Principles of Macroeconomics</u>	3
<u>ECON 261 - Principles of Statistics 1</u>	3
<u>ECON 262 - Principles of Statistics 2</u>	3
<u>IS 101 - Introduction to Information Systems</u>	3
<u>MKT 210 - Marketing Principles</u>	3
Transfer Requirement or General Electives – 12 Units	
Students should take courses that meet requirements for their major at their intended transfer school. Students planning to transfer to the University of Nevada, Reno should obtain a transfer handout from WNC Counseling Services or the UNR Transfer Center.	
For UNR transfer, COM 101 or 113 and 2 courses from Anthropology 101, Political Science 231, Psychology 101, Sociology 101 are recommended.	
GENERAL EDUCATION REQUIREMENTS minimum 21 Units	
ENGLISH/COMMUNICATIONS	6
English: 101, or 102	
FINE ARTS	3
Art: 100, 101*, 135, 124, 141, 160, 211, 214, 231, 260, 261	
Humanities: 101	
Music: 121, 124, 125, 176	
Music: Ensemble: 101*, 131, 135	
Theatre: 100, 105*, 180	
* Course may not meet the fine arts requirement at all universities. Please see a counselor.	

HUMANITIES	3
Core Humanities: 201, 202	
English: 200, 223	
History: 105, 106, 208, 209, 247	
Philosophy: 101, 135, 200, 203, 204, 207, 210, 224	
UNR TRANSFER STUDENTS, CHOOSE AT LEAST ONE OF THE FOLLOWING COURSES:	
Core Humanities: 201, 202	
History: 105, 106	
Philosophy: 200, 207	
MATHEMATICS	
Mathematics: 176	
<i>NOTE: If student does not meet the prerequisite for MATH 176, MATH 126 may be used as a degree elective and should be taken in the first semester.</i>	
SCIENCE	6
Anthropology: 102, 110L	
Astronomy: 109, 110, 120	
Atmospheric Sciences: 117	
Biology: 100, 113, 190, 191, 200	
Chemistry: 100, 121, 122	
Environmental Studies: 100, 101	
Geography: 103, 104, 121	
Geology: 100, 101, 102, 103, 105, 201	
Nutrition: 121	
Physics: 100, 151, 152, 180 & 180L	
Note: Completion of CHEM 121 or BIOL 190, BIOL 223 and BIOL 224, and BIOL 251 fulfills the science general education requirement.	

SOCIAL SCIENCES	3
See Program Requirements	
U.S. & NEVADA CONSTITUTION	3-6
Must meet both requirements. Choose from:	
Core Humanities: 203	
History: 111	
History: 101 and one of the following:	
HIST 102, HIST 217, PSC 100, PSC 208	
Political Science: 101, 103	

CERTIFICATE OF ACHIEVEMENT - BOOKKEEPING		
TOTAL REQUIREMENTS	60 Units	UNITS
PROGRAM REQUIREMENTS	21 Units	
<u>ACC 135</u>	Bookkeeping I	3
<u>ACC 201</u>	Financial Accounting	3
<u>BUS 101</u>	Introduction to Business	3
<u>IS 101 or IS 201</u>	Introduction to Information Systems or Computer Applications	3
<u>MGT 201</u>	Principles of Management	3
<i>CHOOSE 6 UNITS FROM THE FOLLOWING:</i>		
<u>ACC 180</u>	Payroll & Employee Benefit Accounting	3
<u>ACC 202</u>	Managerial Accounting	3
<u>ACC 203</u>	Intermediate Accounting I	3
<u>ACC 220</u>	Microcomputer Accounting Systems	3
<u>ACC 223</u>	Introduction to QuickBooks	3
<u>ACC 290</u>	Certified Bookkeeper Course	6
GENERAL EDUCATION REQUIREMENTS		
9 Units		
English/Communications Requirement (Must include a writing course):		6
Recommend: BUS 107 and BUS 108		
Mathematics Requirement:		3
Recommend: BUS 109		

CERTIFICATE OF ACHIEVEMENT - GENERAL BUSINESS		
TOTAL REQUIREMENTS	60 Units	UNITS
PROGRAM REQUIREMENTS	15 Units	
<u>ACC 135 OR ACC 201</u>	Bookkeeping I or Financial Accounting	3
<u>BUS 101</u>	Introduction to Business	3
<u>IS 101 or IS 201</u>	Introduction to Information Systems or Computer Applications	3
<u>MGT 201</u>	Principles of Management	3
<u>MKT 210</u>	Marketing Principles	3
-		
CHOOSE 6 UNITS FROM THE FOLLOWING:	6 units	
	ACCOUNTING (ACC)	
	BUSINESS (BUS)	
	ECONOMICS (ECON)	
	FINANCE (FIN)	
	MANAGEMENT (MGT)	
	MARKETING (MKT)	
	REAL ESTATE (RE)	
-		
GENERAL EDUCATION REQUIREMENTS	9 Units	
English/Communications Requirement (Must include a writing course):		6
Recommend: BUS 107 and BUS 108		
Mathematics Requirement:		3
Recommend: BUS 109		

Appendix Three
Required Business Courses by Semester Offered
Required Course by Certificate or Degree Program

Required Business Courses by Semester Offered Required Course by Certificate or Degree Program							
ACC 135	FALL	CERT BOOK	CERT BUS		AAS GB		
ACC 180	SUMMER	CERT BOOK *					
ACC 201	FALL/Spring	CERT BOOK	CERT BUS	AAS ACC	AAS GB	AAS MGT	AB
ACC 202	Fall/SPRING	CERT BOOK *		AAS ACC	AAS GB	AAS MGT	AB
ACC 203	FALL	CERT BOOK *					
ACC 220	SPRING ODD	CERT BOOK *					
ACC 223	SPRING EVEN	CERT BOOK *					
ACC 290	SUMMER	CERT BOOK *					
BUS 101	FALL/Spring	CERT BOOK	CERT BUS	AAS ACC	AAS GB	AAS MGT	
BUS 107	FALL	CERT BOOK	CERT BUS	AAS ACC	AAS GB	AAS MGT	
BUS 108	SPRING	CERT BOOK	CERT BUS	AAS ACC	AAS GB	AAS MGT	
BUS 109	FALL	CERT BOOK	CERT BUS	AAS ACC	AAS GB	AAS MGT	
BUS 273	FALL			AAS ACC	AAS GB	AAS MGT	
BUS 299	SPRING			AAS ACC	AAS GB	AAS MGT	
ECON 102	FALL/Spring			AAS ACC	AAS GB	AAS MGT	AB
ECON 103	Fall/SPRING			AAS ACC	AAS GB	AAS MGT	AB
ECON 261	FALL						AB
ECON 262	SPRING						AB
MGT 103	SPRING						
MGT 201	SPRING	CERT BOOK	CERT BUS	AAS ACC	AAS GB	AAS MGT	
MGT 212	SPRING						
MGT 235	FALL					AAS MGT	
MGT 283	SPRING					AAS MGT	
MGT 323	FALL EVEN						BAS CM
MGT 367	SPRING EVEN						BAS CM
MGT 462	SPRING ODD						BAS CM
MGT 496	FALL ODD						BAS CM
MKT 210	Fall/SPRING		CERT BUS	AAS ACC	AAS GB	AAS MGT	AB

*Certificate in Bookkeeping Elective

Appendix Four
Business Program Fall 2020 Enrollment Reports

By Course and Section Number

By Instructor

By Instructional Mode

By Class Size

Business Program Fall 2020 Enrollment Reports By Course and Section Number

Fall 2020 Enrollment Report										
Subject	Catalog Number	Section	Class Number	Location	Enrollment Total	Instructor Full Name	Instruction Mode	Start time	End time	Days
ACC	135	4001	82074	FALCON	0		EN			
ACC	201	4001	82075	WEB	38	Kloes, Richard O	WB			
ACC	135	4001	81956	WEB	25	Anderson, Jordan Taylor	WB			
ACC	201	1001	81957	CARSON	23	Austin, Vivian L.	EN	11:00 am	12:15 pm	TUES, THURS
ACC	201	1002	81958	CARSON	0		EN			
ACC	202	1001	81960	CARSON	17	Austin, Vivian L.	EN	5:30 pm	6:45 pm	TUES, THURS
ACC	223	4001	81961	WEB	0		WB			
ACC	185	1001	82017	CARSON	0		EN			
ACC	202	4001	82031	WEB	29	Kloes, Richard O	WB			
ACC	203	4001	82536	WEB	0		WB			
ACC	261	1001	90954	CARSON	0		EN			
ACC	261	4001	90976	WEB	6	Austin, Vivian L.	WB			
ACC	201	4002	92053	WEB	17	Kloes, Richard O	WB			
BUS	101	4001	82108	WEB	11	Whitcomb, Robert	WB			
BUS	101	1001	82113	CARSON	20	Whitcomb, Robert	EN	9:30 am	10:45 am	MON, WED
BUS	107	4001	81973	WEB	13	Semus, Leonard A.	WB			
BUS	108	4001	81974	WEB	12	Sawyer, Angela M	WB			
BUS	101	1002	90103	CARSON	0		EN			
BUS	109	4001	82381	WEB	9	Steverson, Anthony P.	WB			
BUS	273	4001	82382	WEB	6	Russon, Tina M.	WB			
BUS	101	4002	90104	WEB	0		WB			
BUS	110	1001	90109	CARSON	0		EN			
BUS	101	4003	92019	WEB	14	Whitcomb, Robert	WB			
BUS	299	4001	92505	WEB	0		IO			
BUS	101	1021	92285	CARSON	10	Ash, Robert J.	P	7:00 pm	8:15 pm	TUES, THURS
BUS	101	8055	92842	SLVRS PRINGS	4	Seal, Michael	P			
ECON	261	4001	82123	WEB	29	Sawyer, Angela M	WB			
ECON	102	4001	82156	WEB	32	Badgote, James	WB			
ECON	100	1001	82242	CARSON	7	Humphreys, Isaac	EN	5:30 pm	6:45 pm	TUES, THURS
ECON	102	1001	81906	CARSON	23	Anderson, Jordan Taylor	EN	5:30 pm	8:15 pm	MON
ECON	102	4001	82038	WEB	28	Badgote, James	WB			
ECON	102	4002	88553	WEB	28	Badgote, James	WB			
ECON	102	1041	91052	CARSON	15	Ash, Robert J.	P	5:30 pm	6:45 pm	MON
ECON	261	4002	91742	WEB	16	Sawyer, Angela M	WB			
ECON	300	4001	92910	WEB	0		WB			
ECON	262	4001	92146	WEB	0		WB			
FIN	101	1001	90141	CARSON	0		EN			
FIN	101	4001	90142	WEB	22	Whitcomb, Robert	WB			
MGT	212	4001	90150	WEB	0		WB			
MGT	323	4001	90151	WEB	0		WB			
MGT	201	4001	82534	WEB	19	Whitcomb, Robert	WB			
MGT	201	1041	91057	CARSON	14	Ash, Robert J.	P	7:00 pm	8:15 pm	MON
MGT	4E5	4001	91765	WEB	15	Lebaron-Smith, Jennifer Ayn	WB			
MGT	320	4001	91766	WEB	19	Whize, Georgia A.	WB			
MGT	310	4001	91764	WEB	19	Dodge, Darla J.	WB			
MKT	210	4001	82143	WEB	29	Whitcomb, Robert	WB			
MKT	210	1001	90965	CARSON	10	Scott, Margaret F.	EN	11:00 am	12:15 pm	MON, WED
MKT	210	8055	92843	SLVRS PRINGS	1	Seal, Michael	P			
RE	103	4001	90191	WEB	7	Brusseau, Kathy A.	WB			
RE	101	4001	90190	WEB	20	Brusseau, Kathy A.	WB			

Business Program Fall 2020 Enrollment Reports By Instructor

Fall 2020 Enrollment Report by Instructor											
Subject	Catalog Number	Section	Class Number	Location	Enrollment Total	Instructor Fall Name	Instructor Mode	Room	Start time	End time	Days
ACC	115	4001	81956	WEB	25	Anderson, Jordan Taylor	WB	W16			
ECON	102	1001	81908	CARSON	23	Anderson, Jordan Taylor	EN	CED 306	5:30 pm	8:15 pm	MON
BUS	103	1021	92285	CARSON	10	Ash, Robert J.	P		7:00 pm	8:15 pm	TUES, THURS
ECON	102	1041	91052	CARSON	15	Ash, Robert J.	P		5:30 pm	6:45 pm	MON
MGT	203	1041	91057	CARSON	24	Ash, Robert J.	P		7:00 pm	8:15 pm	MON
ACC	201	1001	81957	CARSON	23	Asstia, Wyan L.	EN	CED 100	11:00 am	12:15 pm	TUES, THURS
ACC	202	1001	81960	CARSON	12	Asstia, Wyan L.	EN	CED 304	5:30 pm	6:45 pm	TUES, THURS
ACC	261	4001	90976	WEB	6	Austin, Wylan L.	WB	WEB			
ECON	102	4001	82156	WEB	32	Bathgate, James	WB	WEB			
ECON	103	4001	82018	WEB	28	Bathgate, James	WB	WEB			
ECON	102	4002	88553	WEB	28	Bathgate, James	WB	WEB			
RE	103	4001	90191	WEB	7	Bryson, Kathy A.	WB	WEB			
RE	101	4001	90190	WEB	20	Bryson, Kathy A.	WB	WEB			
MGT	310	4001	91764	WEB	19	Dodson, Darla J	WB	WEB			
ECON	100	1001	82742	CARSON	7	Humpherys, Isaac	EN	CED 313	5:30 pm	6:45 pm	TUES, THURS
ACC	201	4001	82075	WEB	38	Dones, Richard O	WB	WEB			
ACC	202	4001	82031	WEB	19	Dones, Richard O	WB	WEB			
ACC	201	4002	92053	WEB	17	Dones, Richard O	WB	WEB			
MGT	485	4001	91765	WEB	15	Lebaron-Smith, Jennifer Ayn	WB	WEB			
BUS	273	4001	82382	WEB	6	Rosson, Tina M.	WB	WEB			
BUS	108	4001	81974	WEB	12	Sawyer, Angela M	WB	WEB			
ECON	261	4001	82123	WEB	29	Sawyer, Angela M	WB	WEB			
ECON	261	4002	91742	WEB	16	Sawyer, Angela M	WB	WEB			
MKT	210	1001	90965	CARSON	10	Scott, Margaret F.	EN	BEYN 114	11:00 am	12:15 pm	MON, WED
BUS	101	8055	92842	SLVRSRNGS	4	Seal, Michael	P				
Mkt	210	8055	92843	SLVRSRNGS	1	Seal, Michael	P				
BUS	107	4001	81973	WEB	13	Simon, Leonard A.	WB	WEB			
BUS	109	4001	82381	WEB	9	Steverson, Anthony P.	WB	WEB			
BUS	101	4001	82108	WEB	11	Whitcomb, Robert	WB	WEB			
BUS	101	1001	82113	CARSON	20	Whitcomb, Robert	EN	CED 310	9:30 am	10:45 am	MON, WED
BUS	101	4001	92015	WEB	14	Whitcomb, Robert	WB	WEB			
FIN	101	4001	90142	WEB	22	Whitcomb, Robert	WB	WEB			
MGT	201	4001	82534	WEB	19	Whitcomb, Robert	WB	WEB			
MKT	210	4001	82143	WEB	29	Whitcomb, Robert	WB	WEB			
MGT	320	4001	91766	WEB	19	White, George A.	WB	WEB			
ACC	135	3001	82074	FALLOM	0		EN				
ACC	201	1002	81958	CARSON	0		EN				
ACC	223	4001	81961	WEB	0		WB				
ACC	135	1001	82017	CARSON	0		EN				
ACC	203	4001	82536	WEB	0		WB				
ACC	261	1001	90954	CARSON	0		EN				
BUS	101	1002	90103	CARSON	0		EN				
BUS	101	4002	90104	WEB	0		WB				
BUS	110	1021	90109	CARSON	0		EN				
BUS	299	4001	92505	WEB	0		WB				
ECON	100	4001	92910	WEB	0		WB				
ECON	262	4002	92146	WEB	0		WB				
FIN	102	1001	90141	CARSON	0		EN				
MGT	222	4001	90150	WEB	0		WB				
MGT	321	4001	90151	WEB	0		WB				

Business Program Fall 2020 Enrollment Reports By Instructional Mode

Fall 2020 Enrollment Report by Instructional Mode											
Subject	Catalog Number	Section	Class Number	Location	Enrollment Total	Instructor Fall Name	Instruction Mode	Room	Start time	End time	Days
ACC	135	1001	81957	FALLON	0		EN				
ACC	201	1001	81957	CARSON	23	Austin, Vivian L.	EN	CFD 100	11:00 am	12:15 pm	TUES THURS
ACC	201	1002	81958	CARSON	0		EN				
ACC	202	1001	81960	CARSON	12	Austin, Vivian L.	EN	CFD 304	5:30 pm	6:45 pm	TUES THURS
ACC	135	1001	82017	CARSON	0		EN				
ACC	261	1001	90954	CARSON	0		EN				
BUS	101	1001	82113	CARSON	20	Whitcomb, Robert	EN	CFD 310	9:30 am	10:45 am	MON, WED
BUS	101	1002	90103	CARSON	0		EN				
BUS	110	1001	90109	CARSON	0		EN				
ECON	100	1001	82242	CARSON	7	Humpherys, Isaac	EN	CFD 313	5:30 pm	6:45 pm	TUES THURS
ECON	101	1001	81906	CARSON	23	Anderson, Jordan Taylor	EN	CFD 306	5:30 pm	8:15 pm	MON
FIN	101	1001	90181	CARSON	0		EN				
MGT	210	1001	90955	CARSON	10	Scott, Margaret F.	EN	REYN 114	11:00 am	12:15 pm	MON, WED
BUS	299	4001	92505	WEB	0		IO				
BUS	101	1021	92285	CARSON	20	Ash, Robert J.	F		7:00 pm	8:15 pm	TUES THURS
BUS	101	8055	92842	SLVSPRINGS	4	Szal, Michael	P				
ECON	102	1041	91052	CARSON	15	Ash, Robert J.	P		5:30 pm	6:45 pm	MON
MGT	201	1041	91057	CARSON	14	Ash, Robert J.	P		7:00 pm	8:15 pm	MON
MGT	210	8055	92843	SLVSPRINGS	1	Szal, Michael	P				
ACC	201	4001	82075	WEB	28	Kloos, Richard O	WB	WEB			
ACC	135	4001	81956	WEB	25	Anderson, Jordan Taylor	WB	WEB			
ACC	223	4001	81961	WEB	0		WB				
ACC	202	4001	82031	WEB	19	Kloos, Richard O	WB	WEB			
ACC	203	4001	82536	WEB	0		WB				
ACC	261	4001	90976	WEB	6	Austin, Vivian L.	WB	WEB			
ACC	201	4002	92053	WEB	17	Kloos, Richard O	WB	WEB			
BUS	101	4001	81108	WEB	11	Whitcomb, Robert	WB	WEB			
BUS	107	4001	81073	WEB	13	Sorace, Leonard A.	WB	WEB			
BUS	108	4001	81974	WEB	12	Sawyer, Angela M	WB	WEB			
BUS	109	4001	81381	WEB	9	Steverson, Anthony P.	WB	WEB			
BUS	273	4001	82382	WEB	8	Russom, Tina M.	WB	WEB			
BUS	101	4002	90304	WEB	0		WB				
BUS	101	4003	92019	WEB	14	Whitcomb, Robert	WB	WEB			
ECON	261	4001	81173	WEB	29	Sawyer, Angela M	WB	WEB			
ECON	102	4001	82156	WEB	32	Bathgate, James	WB	WEB			
ECON	103	4001	82018	WEB	21	Bathgate, James	WB	WEB			
ECON	102	4002	88551	WEB	28	Bathgate, James	WB	WEB			
ECON	261	4002	51742	WEB	16	Sawyer, Angela M	WB	WEB			
ECON	100	4001	92910	WEB	0		WB				
ECON	242	4001	97146	WEB	0		WB				
FIN	101	4002	90142	WEB	22	Whitcomb, Robert	WB	WEB			
MGT	212	4001	90150	WEB	0		WB				
MGT	323	4001	90151	WEB	0		WB				
MGT	201	4001	82534	WEB	19	Whitcomb, Robert	WB	WEB			
MGT	485	4001	51765	WEB	15	Lebaron-Smith, Jennifer Ann	WB	WEB			
MGT	320	4001	51766	WEB	19	White, Georgie A.	WB	WEB			
MGT	310	4001	91764	WEB	19	Dodge, Darla J.	WB	WEB			
MKT	210	4001	82143	WEB	29	Whitcomb, Robert	WB	WEB			
RE	103	4002	90191	WEB	7	Brusseau, Esthey A.	WB	WEB			
RE	101	4001	90190	WEB	20	Brusseau, Kathy A.	WB	WEB			

**Business Program Fall 2020 Enrollment Reports
By Class Size**

Fall 2020 Enrollment Report by Class Size											
Subject	Catalog Number	Section	Class Number	Location	Enrollment Total	Instructor Full Name	Instruction Mode	Room	Start time	End time	Days
ACC	135	1001	81974	FALCON	0		EN				
ACC	201	1002	81958	CARSON	0		EN				
ACC	223	4001	81921	WEB	0		WB				
ACC	235	1001	82917	CARSON	0		EN				
ACC	235	4001	82134	WEB	0		WB				
ACC	482	1001	90354	CARSON	0		EN				
BUS	101	1001	90105	CARSON	0		EN				
BUS	101	4002	90104	WEB	0		WB				
BUS	150	1001	90109	CARSON	0		EN				
BLIS	299	4001	92505	WEB	0		WO				
ECON	100	4001	92910	WEB	0		WB				
ECON	262	1001	92146	WEB	0		WB				
FIN	101	1001	90141	CARSON	0		EN				
MGT	212	4001	90150	WEB	0		WB				
MGT	323	4001	90151	WEB	0		WB				
MKT	210	8055	92843	SHIVERSPRINGS	1	Sest, Michael	P				
BUS	101	8055	92842	SHIVERSPRINGS	4	Sest, Michael	P				
ACC	261	4001	90576	WEB	6	Austin, Vivian L.	WB	WEB			
BUS	273	4001	82582	WEB	6	Russom, Tina M.	WB	WEB			
ECON	100	1001	82742	CARSON	7	Humphreys, Isaac	EN	CEJ 313	5:30 pm	6:45 pm	TUES, THURS
RE	103	4001	90191	WEB	7	Brusseau, Cathy A.	WB	WEB			
BUS	109	4001	82381	WEB	9	Steverson, Anthony P.	WB	WEB			
BUS	101	1021	92185	CARSON	10	Ash, Robert J.	P		7:00 pm	8:15 pm	TUES, THURS
MKT	210	1001	90965	CARSON	10	Scott, Margaret F.	EN	BEVN 114	11:00 am	12:15 pm	MON, WED
BUS	101	4001	82128	WEB	11	Whitcomb, Robert	WB	WEB			
ACC	202	1001	81960	CARSON	12	Austin, Vivian L.	EN	CEJ 304	5:30 pm	6:45 pm	TUES, THURS
BUS	108	4001	81974	WEB	12	Sawyer, Angela M.	WB	WEB			
BUS	107	4001	81973	WEB	13	Somas, Leonard A.	WB	WEB			
BUS	101	4003	92019	WEB	14	Whitcomb, Robert	WB	WEB			
MGT	201	1041	91057	CARSON	14	Ash, Robert J.	P		7:00 pm	8:15 pm	MON
ECON	102	1041	91052	CARSON	15	Ash, Robert J.	P		5:30 pm	6:45 pm	MON
MGT	485	4001	91765	WEB	15	Lubaron-Smith, Jennifer Ann	WB	WEB			
ECON	261	4002	91742	WEB	16	Sawyer, Angela M.	WB	WEB			
ACC	201	4002	92053	WEB	17	Kloet, Richard O.	WB	WEB			
ACC	202	4001	82031	WEB	19	Kloet, Richard O.	WB	WEB			
MGT	201	4001	82534	WEB	19	Whitcomb, Robert	WB	WEB			
MGT	320	4001	91764	WEB	19	White, Georgia A.	WB	WEB			
MGT	310	4001	91764	WEB	19	Dodge, Darla J.	WB	WEB			
BUS	102	1001	82113	CARSON	20	Whitcomb, Robert	EN	CEJ 310	9:30 am	10:45 am	MON, WED
RE	101	4001	90190	WEB	20	Brusseau, Cathy A.	WB	WEB			
FIN	101	4001	90142	WEB	22	Whitcomb, Robert	WB	WEB			
ACC	201	1001	81957	CARSON	23	Austin, Vivian L.	EN	CEJ 100	11:00 am	12:15 pm	TUES, THURS
ECON	102	1001	81906	CARSON	23	Anderson, Jordan Taylor	EN	CEJ 306	5:30 pm	8:15 pm	MON
ACC	135	4001	81956	WEB	25	Anderson, Jordan Taylor	WB	WEB			
ECON	103	4001	82019	WEB	28	Bathgate, James	WB	WEB			
ECON	102	4002	84553	WEB	28	Bathgate, James	WB	WEB			
ECON	261	4001	82123	WEB	29	Sawyer, Angela M.	WB	WEB			
MKT	210	4001	82145	WEB	29	Whitcomb, Robert	WB	WEB			
ECON	102	4001	82156	WEB	31	Bathgate, James	WB	WEB			
ACC	201	4001	82075	WEB	38	Kloet, Richard O.	WB	WEB			

Appendix Five
Business Program Enrollment Reports
Spring 2013 through Spring 2021

Enrollment Report Spring 2013

Subject	Catalog Number	Section	Location	Enrollment Total	Instructor Full Name	Instruction Mode	Room	Start time	End time	Days
ACC	202	1004	WEB	27	Kloes,Richard O	WB	WEB			
ACC	135	1001	CARSON	0		EN				
ACC	135	1003	FALLON	0		PI				
ACC	135	1004	WEB	30	Kloes,Richard O	WB	WEB			
ACC	201	1001	CARSON	23	Manke,Vernon W.	PI	CED 314	11:00 am	12:15 pm	TUES, THURS
ACC	201	1002	CARSON	28	Austin,Vivian L.	EN	CED 314	5:30 pm	6:45 pm	TUES, THURS
ACC	201	1003	WEB	30	Kloes,Richard O	WB	WEB			
ACC	202	1001	CARSON	24	Manke,Vernon W.	PI	CED 325	5:30 pm	6:45 pm	TUES, THURS
ACC	202	1003	FALLON	5	Kloes,Richard O	EN	PINH 202	5:30 pm	6:45 pm	MON, WED
ACC	203	1001	WEB	20	Kloes,Richard O	WB	WEB			
ACC	204	1001	CARSON	0		PI				
ACC	223	1001	WEB	30	Akin, Lee S.	WB	WEB			
ACC	290	1001	WEB	29	Kloes,Richard O	WB	WEB			
ACC	135	1002	CARSON	17	Morgan,Sharon R	PI	CED 325	7:00 pm	9:45 pm	TUES
ACC	202	1002	DOUGLAS	0		PI				
BUS	101	1001	CARSON	24	Semas,Leonard A.	P	CED 316	11:00 am	12:15 pm	TUES, THURS
BUS	101	1003	FALLON	12	Stewart,Richard A.	P	PINH 208	4:00 pm	6:45 pm	WED
BUS	107	1001	CARSON	29	Semas,Leonard A.	P	CED 305	4:00 pm	6:45 pm	WED
BUS	108	1001	CARSON	30	Semas,Leonard A.	P	CED 325	7:00 pm	9:45 pm	THURS
BUS	109	1002	WEB	30	Hillis,David G.	WB	WEB			
BUS	110	1001	CARSON	22	Maclin,Clifton C. Jr.	P	CED 203	7:00 pm	9:45 pm	TUES
BUS	273	1001	FALLON	12	Feest,Mark A.	P	PINH 205	7:00 pm	9:45 pm	TUES
BUS	109	1001	CARSON	21	Akin, Lee S.	EN	CED 331D	4:00 pm	6:45 pm	TUES
BUS	108	1003	FALLON	13	Stewart,Richard A.	P	VRGH 304	4:00 pm	6:45 pm	TUES
BUS	101	1002	CARSON	27	Whitcomb,Robert	P	BRIS 344	2:30 pm	3:45 pm	MON, WED
BUS	108	1002	DOUGLAS	0		P				
BUS	274	1001	CARSON	0		P				
BUS	273	1002	CARSON	12	Winne,Donald	P	CED 207	5:30 pm	6:45 pm	TUES, THURS
ECON	103	1001	CARSON	26	Etchegoyhen,Paul	P	CED 109	4:00 pm	5:15 pm	MON, WED
ECON	262	1001	CARSON	8	Powers,Susanna B	P	CED 331C	5:30 pm	6:45 pm	MON, WED
ECON	102	1001	CARSON	35	Bathgate,James	P	CED 314	7:00 pm	9:45 pm	MON
ECON	102	1002	CARSON	35	Powers,Susanna B	P	CED 314	7:00 pm	9:45 pm	WED
ECON	103	1002	CARSON	22	Bathgate,James	P	CED 316	7:00 pm	9:45 pm	TUES
ECON	103	1003	FALLON	19	Stewart,Richard A.	P	PINH 209	4:00 pm	6:45 pm	MON
FIN	101	1001	WEB	30	Sawyer,Angela M	WB	WEB			
FIN	115	1001	CARSON	13	Etchegoyhen,Paul	P	CED 111	5:30 pm	6:45 pm	MON, WED
MGT	201	1004	WEB	29	Sawyer,Angela M	WB	WEB			
MGT	469	1001	CARSON	9	Whitcomb,Robert	P	CED 111	7:00 pm	9:45 pm	TUES
MGT	283	1002	WEB	29	Therault,Stephen J	WB	WEB			
MGT	367	1001	CARSON	12	Whitcomb,Robert	P	BRIS 320	7:00 pm	9:45 pm	THURS
MGT	212	1001	CARSON	26	Whitcomb,Robert	P	CED 306	7:00 pm	9:45 pm	MON
MGT	201	1001	CARSON	29	Whitcomb,Robert	P	CED 204	4:00 pm	6:45 pm	THURS
MGT	201	1003	FALLON	13	Stewart,Richard A.	P	PINH 208	4:00 pm	6:45 pm	THURS
MGT	201	1002	CARSON	0		P				
MGT	283	1001	FALLON	9	Stewart,Richard A.	P		7:00 pm	9:45 pm	MON
MKT	210	1001	WEB	30	Sawyer,Angela M	WB	WEB			
MKT	127	1001	CARSON	23	Whitcomb,Robert	P	CED 205	4:00 pm	6:45 pm	TUES
MKT	210	1003	DOUGLAS	0		P				
RE	101	1001	WEB	30	Brusseau,Kathey A.	WB	WEB			

Enrollment Report Summer 2013

Subject	Catalog Number	Section	Location	Enrollment Total	Instructor Full Name	Instruction Mode	Start time	End time	Days
ACC	180	1001	WEB	17	Kloes,Richard O	WB			
ACC	135	TP1	CARSON	1		P			
BUS	101	1001	WEB	26	Kloes,Richard O	WB			
BUS	109	1001	WEB	15	Hillis,David G.	WB			
BUS	107	1001	CARSON	19	Kubistant,Thomas M	P	1/0/00	0.82291667	TUES, THURS
BUS	109	1002	WEB	4	Hillis,David G.	WB			
BUS	101	TP1	CARSON	2		P			
ECON	102	1001	CARSON	16	Bathgate,James	P	0.72916667	0.84375	MON, WED
FIN	101	1001	WEB	24	Kloes,Richard O	WB			
MKT	210	TP2	CARSON	1		P			

Enrollment Report Fall 2013

Subject	Catalog Number	Section	Location	Enrollment Total	Instructor Full Name	Instruction Mode	Start time	End time	Days
ACC	135	1001	CARSON	18	Morgan,Sharon R	PI	11:00 am	12:15 pm	MON, WED
ACC	135	1006	WEB	47	Kloes,Richard O	WB			
ACC	201	1001	CARSON	12	Manke,Vernon W.	PI	11:00 am	12:15 pm	TUES, THURS
ACC	201	1002	CARSON	27	Austin,Vivian L.	PI	5:30 pm	6:45 pm	TUES, THURS
ACC	201	1004	WEB	48	Kloes,Richard O	WB			
ACC	202	1001	CARSON	29	Manke,Vernon W.	PI	5:30 pm	6:45 pm	TUES, THURS
ACC	202	1003	WEB	26	Kloes,Richard O	WB			
ACC	203	1001	CARSON	7	Kloes,Richard O	RO	5:30 pm	6:45 pm	TUES, THURS
ACC	220	1001	WEB	25	Kloes,Richard O	WB			
ACC	261	1001	CARSON	10	Austin,Vivian L.	PI	7:00 pm	9:45 pm	THURS
ACC	105	1001	CARSON	15	Austin,Vivian L.	PI	7:00 pm	9:45 pm	MON
ACC	223	1001	WEB	27	Akin, Lee S.	WB			
ACC	135	1003	DOUGLAS	12	Morgan,Sharon R	PI	7:00 pm	9:45 pm	TUES
ACC	135	1004	FALLON	10	Kloes,Richard O	LC	4:00 pm	5:15 pm	MON, WED
ACC	201	1003	FALLON	12	Kloes,Richard O	LC	5:30 pm	6:45 pm	MON, WED
ACC	203	1002	FALLON	1	Kloes,Richard O	SO	5:30 pm	6:45 pm	TUES, THURS
ACC	202	1002	DOUGLAS	0		PI			
BUS	101	1001	CARSON	27	Whitcomb,Robert	P	1:00 pm	2:15 pm	TUES, THURS
BUS	101	1004	FALLON	19	Stewart,Richard A.	P	7:00 pm	9:45 pm	WED
BUS	107	1001	CARSON	19	Black,Sherry L.	P	4:00 pm	5:15 pm	MON, WED
BUS	107	1002	CARSON	33	Semas,Leonard A.	P	7:00 pm	9:45 pm	WED
BUS	110	1001	CARSON	17	Maclin,Clifton C. Jr.	P	11:00 am	12:15 pm	TUES, THURS
BUS	273	1001	CARSON	13	Winne,Donald	P	5:30 pm	6:45 pm	TUES, THURS
BUS	101	1002	CARSON	21	Whitcomb,Robert	P	5:30 pm	6:45 pm	TUES, THURS
BUS	101	1003	CARSON	21	Whitcomb,Robert	P	4:00 pm	6:45 pm	MON
BUS	107	1003	FALLON	24	Stewart,Richard A.	P	7:00 pm	9:45 pm	TUES
BUS	109	1001	WEB	36	Hillis,David G.	WB			
BUS	109	1002	CARSON	28	Hillis,David G.	EN	4:00 pm	6:45 pm	TUES
ECON	100	1001	CARSON	17	Maclin,Clifton C. Jr.	P	1:00 pm	2:15 pm	MON, WED
ECON	102	1001	CARSON	31	Bathgate,James	P	7:00 pm	8:15 pm	TUES, THURS
ECON	102	1002	CARSON	35	Bathgate,James	P	7:00 pm	9:45 pm	WED
ECON	103	1001	CARSON	30	Etchegoyhen,Paul	P	4:00 pm	5:15 pm	MON, WED
ECON	261	1001	CARSON	20	Powers,Susanna B	PI	7:00 pm	9:45 pm	TUES
ECON	102	1003	DOUGLAS	8	Stewart,Richard A.	VR	7:00 pm	9:45 pm	MON
ECON	102	1004	FALLON	14	Stewart,Richard A.	VS	7:00 pm	9:45 pm	MON
ECON	103	1002	WEB	30	Bergan,Nicholas J	WB			
ECON	103	1003	WEB	9	Bergan,Nicholas J	WB			
FIN	101	1001	CARSON	20	Whitcomb,Robert	P	2:30 pm	3:45 pm	TUES, THURS
FIN	101	1002	WEB	40	Sawyer,Angela M	WB			
MGT	103	1001	CARSON	12	Semas,Leonard A.	P	5:30 pm	6:45 pm	MON, WED
MGT	103	1002	WEB	40	Sawyer,Angela M	WB			
MGT	201	1001	WEB	40	Sawyer,Angela M	WB			
MGT	212	1001	FALLON	5	Stewart,Richard A.	P	4:00 pm	6:45 pm	WED
MGT	323	1001	CARSON	8	Whitcomb,Robert	P	7:00 pm	9:45 pm	TUES
MGT	462	1001	CARSON	9	Whitcomb,Robert	P	7:00 pm	9:45 pm	THURS
MGT	283	1001	CARSON	27	Whitcomb,Robert	P	7:00 pm	9:45 pm	MON
MKT	210	1001	CARSON	30	Etchegoyhen,Paul	P	7:00 pm	9:45 pm	MON
MKT	210	1002	DOUGLAS	15	Etchegoyhen,Paul	P	7:00 pm	9:45 pm	WED

MKT	210	1003	FALLON	12	Stewart,Richard A.	P	7:00 pm	9:45 pm	THURS
MKT	210	1004	WEB	30	Therault,Stephen J	WB			
RE	101	1001	WEB	29	Brusseau,Kathey A.	WB			
RE	103	1001	WEB	0		WB			

Enrollment Report Spring 2014

Subject	Catalog Number	Section	Class Number	Location	Enrollment Total	Instructor Full Name	Instruction Mode	Start time	End time	Days
ACC	202	1004	20412	WEB	26	Kloes,Richard O	WB			
ACC	135	1002	20302	WEB	41	Kloes,Richard O	WB			
ACC	201	1001	20303	CARSON	15	Manke,Vernon W.	PI	11:00 am	12:15 pm	TUES, THURS
ACC	201	1002	20304	CARSON	23	Austin,Vivian L.	PI	5:30 pm	6:45 pm	TUES, THURS
ACC	201	1003	20305	WEB	48	Kloes,Richard O	WB			
ACC	202	1001	20306	CARSON	20	Manke,Vernon W.	PI	5:30 pm	6:45 pm	TUES, THURS
ACC	202	1003	20307	FALLON	0		LC			
ACC	223	1001	20309	WEB	28	Akin,Lee S.	WB			
ACC	135	1001	20553	CARSON	9	Morgan,Sharon R	PI	5:30 pm	6:45 pm	TUES, THURS
ACC	290	1001	20472	WEB	15	Kloes,Richard O	WB			
ACC	204	1001	22439	CARSON	0		PI			
ACC	202	1002	22437	DOUGLAS	0		PI			
ACC	203	1001	30653	WEB	22	Kloes,Richard O	WB			
ACC	135	1003	30679	FALLON	0		P			
ACC	204	1002	31285	CARSON	3	Morgan,Sharon R	IS			
BUS	107	1001	20344	CARSON	22	Semas,Leonard A.	P	4:00 pm	6:45 pm	WED
BUS	108	1001	20345	CARSON	15	Semas,Leonard A.	P	4:00 pm	6:45 pm	THURS
BUS	109	1004	20353	WEB	29	Hillis,David G.	WB			
BUS	110	1001	20354	CARSON	16	Maclin,Clifton C. Jr.	P	4:00 pm	6:45 pm	THURS
BUS	101	1001	20295	CARSON	30	Dodge,Darla J	P	7:00 pm	9:45 pm	MON
BUS	108	1003	20548	FALLON	10	Stewart,Richard A.	P	7:00 pm	9:45 pm	TUES
BUS	101	1002	20554	CARSON	26	Whitcomb,Robert	P	9:30 am	10:45 am	MON, WED
BUS	109	1001	20555	CARSON	17	Pruitt,Justin T.	LC	5:30 pm	6:45 pm	TUES, THURS
BUS	273	1001	20636	CARSON	22	Winne,Donald	P	5:30 pm	6:45 pm	TUES, THURS
BUS	108	1002	22441	CARSON	30	Semas,Leonard A.	P	4:00 pm	6:45 pm	TUES
BUS	274	1001	22445	CARSON	0		P			
BUS	109	1002	22442	DOUGLAS	1	Stewart,Richard A.	RO	1:00 pm	2:15 pm	MON, WED
BUS	109	1003	22443	FALLON	10	Stewart,Richard A.	SO	1:00 pm	2:15 pm	MON, WED
BUS	112	1001	22444	CARSON	0		P			
BUS	109	1005	30591	CARSON	14	Stewart,Richard A.	RO	1:00 pm	2:15 pm	MON, WED
BUS	109	1006	30941	WEB	24	Hillis,David G.	WB			
BUS	295	1001	31265	CARSON	3	Whitcomb,Robert	FS			
ECON	103	1001	20022	CARSON	20	Etchegoyhen,Paul	P	4:00 pm	5:15 pm	TUES, THURS
ECON	262	1001	20023	CARSON	16	Powers,Susanna B	P	5:30 pm	6:45 pm	MON, WED
ECON	102	1001	20141	CARSON	30	Bathgate,James	P	7:00 pm	9:45 pm	TUES
ECON	102	1002	20558	CARSON	35	Powers,Susanna B	P	7:00 pm	9:45 pm	WED
ECON	103	1002	20559	CARSON	16	Bathgate,James	P	7:00 pm	8:15 pm	MON, WED
ECON	103	1004	20560	FALLON	10	Stewart,Richard A.	SO	7:00 pm	9:45 pm	MON
ECON	103	1003	22447	DOUGLAS	3	Stewart,Richard A.	RO	7:00 pm	9:45 pm	MON
ECON	365	1001	22448	CARSON	0		P			
ECON	103	1005	30075	WEB	22	Bergan,Nicholas J	WB			
ECON	103	1006	30654	WEB	13	Bergan,Nicholas J	WB			
FIN	101	1001	20401	WEB	39	Sawyer,Angela M	WB			
FIN	115	1001	20646	CARSON	14	Etchegoyhen,Paul	P	5:30 pm	6:45 pm	TUES, THURS
FIN	101	1002	30650	DOUGLAS	9	Whitcomb,Robert	P	2:00 pm	3:45 pm	MON, WED
MGT	201	1003	20028	WEB	38	Sawyer,Angela M	WB			
MGT	469	1001	20030	CARSON	1	Whitcomb,Robert	IS			
MGT	283	1002	20043	CARSON	0		P			
MGT	367	1001	20363	CARSON	4	Whitcomb,Robert	P	7:00 pm	9:45 pm	WED
MGT	201	1001	20568	CARSON	22	Maclin,Clifton C. Jr.	P	7:00 pm	9:45 pm	MON
MGT	201	1002	20569	FALLON	12	Stewart,Richard A.	EN	7:00 pm	9:45 pm	THURS
MGT	212	1001	20570	CARSON	28	Whitcomb,Robert	P	4:00 pm	6:45 pm	WED
MGT	283	1001	20629	FALLON	0		P			

MGT	235	1001	23551	CARSON	8	Maclin, Clifton C. Jr.	P	4:00 pm	6:45 pm	MON
MGT	103	1001	23549	FALLON	17	Black, Teresa Dawn	P	4:00 pm	5:15 pm	TUES, THURS
MGT	235	1002	23552	FALLON	0		P			
MGT	283	1003	31069	CARSON	0		P			
MGT	212	1002	31381	CARSON	1	Black, Teresa Dawn	IS			
MKT	210	1001	20031	CARSON	32	Etchegoyhen, Paul	P	7:00 pm	9:45 pm	THURS
MKT	127	1001	20488	CARSON	16	Whitcomb, Robert	P	4:00 pm	6:45 pm	TUES
MKT	210	1002	23553	WEB	38	Sawyer, Angela M	WB			
RE	101	1001	20378	WEB	30	Brusseau, Kathey A.	WB			
RE	103	1001	20573	WEB	23	Brusseau, Kathey A.	WB			

Enrollment Report Summer 2014

Subject	Catalog Number	Section	Location	Enrollment Total	Instructor Full Name	Instruction Mode	Start time	End time	Days
ACC	180	1001	WEB	18	Kloes, Richard O	WB			
ACC	135	1001	CARSON	9	Morgan, Sharon R	P	11:00 am	1:45 pm	MON, WED
ACC	201	1001	CARSON	0		P			
BUS	107	1001	CARSON	15	Kubistant, Thomas M	P	5:15 pm	8:00 pm	TUES, THURS
BUS	101	1001	WEB	26	Kloes, Richard O	WB			
BUS	109	1001	WEB	17	Hillis, David G.	WB			
BUS	295	1001	CARSON	1	Whitcomb, Robert	IS			
BUS	101	TP2	CARSON	23		P			
ECON	102	1001	CARSON	15	Bathgate, James	P	5:30 pm	8:15 pm	MON, WED
FIN	101	1001	WEB	29	Kloes, Richard O	WB			
MGT	103	1001	WEB	23	Sawyer, Angela M	WB			
MGT	201	1001	WEB	28	Sawyer, Angela M	WB			
MKT	210	1001	WEB	27	Sawyer, Angela M	WB			
MKT	210	TP	CARSON	2		P			

Enrollment Report Fall 2014

Subject	Catalog Number	Section	Location	Enrollment Total	Instructor Full Name	Instruction Mode	Start time	End time	Days
ACC	220	1001	WEB	14	Kloes,Richard O	WB			
ACC	105	1001	CARSON	12	Austin,Vivian L.	P	7:00 pm	9:45 pm	MON
ACC	203	1002	CARSON	9	Kloes,Richard O	VR	5:30 pm	6:45 pm	TUES, THURS
ACC	135	1002	WEB	33	Kloes,Richard O	WB			
ACC	201	1001	CARSON	28	Austin,Vivian L.	P	5:30 pm	6:45 pm	TUES, THURS
ACC	201	1002	CARSON	15	Manke,Vernon W.	P	11:00 am	12:15 pm	TUES, THURS
ACC	201	1003	FALLON	6	Kloes,Richard O	LC	5:30 pm	6:45 pm	MON, WED
ACC	202	1001	CARSON	17	Manke,Vernon W.	P	5:30 pm	6:45 pm	TUES, THURS
ACC	223	1001	WEB	27	Akin,Lee S.	WB			
ACC	203	1001	FALLON	2	Kloes,Richard O	VS	5:30 pm	6:45 pm	TUES, THURS
ACC	135	1003	DOUGLAS	0		EN			
ACC	202	1002	WEB	21	Kloes,Richard O	WB			
ACC	135	1001	CARSON	9	Morgan,Sharon R	EN	11:00 am	12:15 pm	MON, WED
ACC	135	1004	FALLON	7	Kloes,Richard O	LC	4:00 pm	5:15 pm	MON, WED
ACC	201	1004	WEB	45	Kloes,Richard O	WB			
ACC	261	1001	CARSON	8	Austin,Vivian L.	P	7:00 pm	9:45 pm	THURS
ACC	201	1005	DOUGLAS	7	Morgan,Sharon R	EN	4:00 pm	6:45 pm	THURS
BUS	101	1001	CARSON	28	Whitcomb,Robert	P	11:00 am	12:15 pm	TUES, THURS
BUS	107	1001	CARSON	13	Semas,Leonard A.	P	4:00 pm	5:15 pm	MON, WED
BUS	108	1001	CARSON	30	Semas,Leonard A.	P	5:30 pm	6:45 pm	MON, WED
BUS	273	1001	CARSON	24	Winne,Donald	P	5:30 pm	6:45 pm	TUES, THURS
BUS	109	1002	CARSON	19	Pruitt,Justin T.	P	5:30 pm	6:45 pm	MON, WED
BUS	112	1001	CARSON	0		P			
BUS	101	1002	CARSON	30	Hunter,Donatella	EN	7:00 pm	9:45 pm	MON
BUS	109	1001	WEB	29	Hillis,David G.	WB			
BUS	107	1002	CARSON	13	Semas,Leonard A.	P	4:00 pm	6:45 pm	TUES
BUS	107	1003	FALLON	14	Stewart,Richard A.	P	4:00 pm	6:45 pm	TUES
BUS	109	1003	FALLON	0		VR			
BUS	101	1003	WEB	30	Whitcomb,Robert	WB			
BUS	101	1004	FALLON	10	Stewart,Richard A.	P	4:00 pm	6:45 pm	WED
BUS	109	1004	CARSON	11	Pruitt,Justin T.	P	7:00 pm	8:15 pm	MON, WED
BUS	273	1002	CARSON	5	Whitcomb,Robert	IS			
ECON	103	1001	CARSON	14	Etchegoyhen,Paul	P	4:00 pm	5:15 pm	MON, WED
ECON	102	1001	CARSON	18	Bathgate,James	P	7:00 pm	8:15 pm	TUES, THURS
ECON	102	1002	CARSON	27	Bathgate,James	P	7:00 pm	9:45 pm	WED
ECON	103	1002	WEB	28	Bergan,Nicholas J	WB			
ECON	261	1001	CARSON	17	Powers,Susanna B	P	7:00 pm	9:45 pm	TUES
ECON	100	1001	CARSON	14	Watts,Alan D.	P	4:00 pm	6:45 pm	TUES
ECON	102	1003	FALLON	13	Stewart,Richard A.	P	4:00 pm	6:45 pm	MON
ECON	102	1004	WEB	30	Bergan,Nicholas J	WB			
FIN	101	1001	CARSON	12	Whitcomb,Robert	P	1:00 pm	2:15 pm	TUES, THURS
FIN	101	1002	WEB	40	Sawyer,Angela M	WB			
FIN	101	1003	WEB	0		WB			
MGT	283	1002	FALLON	0		P			
MGT	201	1001	WEB	39	Sawyer,Angela M	WB			
MGT	212	1001	FALLON	10	Stewart,Richard A.	P	7:00 pm	9:45 pm	MON
MGT	103	1001	WEB	37	Sawyer,Angela M	WB			
MGT	283	1001	CARSON	18	Whitcomb,Robert	P	4:00 pm	6:45 pm	TUES
MGT	462	1001	CARSON	0		RO			

MGT	323	1001	CARSON	4	Tiede,Loretta Jean	RO	7:00 pm	9:45 pm	TUES
MGT	462	1002	FALLON	0		SO			
MGT	323	1002	FALLON	0	Tiede,Loretta Jean	SO	7:00 pm	9:45 pm	TUES
MGT	201	1002	WEB	0		WB			
MGT	103	1002	WEB	0		WB			
MKT	210	1001	CARSON	28	Etchegoyhen,Paul	P	7:00 pm	9:45 pm	MON
MKT	210	1003	FALLON	5	Stewart,Richard A.	P	4:00 pm	6:45 pm	THURS
MKT	210	1002	DOUGLAS	9	Etchegoyhen,Paul	P	7:00 pm	9:45 pm	WED
MKT	262	1001	CARSON	13	Whitcomb,Robert	P	4:00 pm	6:45 pm	THURS
RE	101	1001	WEB	24	Brusseau,Kathey A.	WB			
RE	103	1001	WEB	13	Brusseau,Kathey A.	WB			
RE	103	1002	CARSON	10	Lepire,Garrett E.	P	8:00 am	5:00 pm	SAT
RE	101	1002	CARSON	11	Lepire,Garrett E.	P	8:00 am	5:00 pm	SAT

Enrollment Report Spring 2015

Subject	Catalog Number	Section	Location	Enrollment Total	Instructor Full Name	Instruction Mode	Start time	End time	Days
ACC	202	1004	WEB	23	Kloes,Richard O	WB			
ACC	201	1001	CARSON	14	Austin,Vivian L.	PI	5:30 pm	6:45 pm	TUES, THURS
ACC	201	1002	CARSON	13	Manke,Vernon W.	PI	11:00 am	12:15 pm	TUES, THURS
ACC	201	1003	WEB	48	Kloes,Richard O	WB			
ACC	202	1001	CARSON	24	Manke,Vernon W.	P	5:30 pm	6:45 pm	TUES, THURS
ACC	223	1001	WEB	27	Akin,Lee S.	WB			
ACC	290	1001	WEB	10	Kloes,Richard O	WB			
ACC	135	1001	WEB	26	Kloes,Richard O	WB			
ACC	203	1001	WEB	17	Kloes,Richard O	WB			
ACC	204	1002	CARSON	7	Kloes,Richard O	VR	5:30 pm	6:45 pm	TUES, THURS
ACC	105	1001	WEB	24	Austin,Vivian L.	WB			
ACC	204	1001	FALLON	1	Kloes,Richard O	VS	5:30 pm	6:45 pm	TUES, THURS
ACC	202	1003	FALLON	0		P			
ACC	135	1003	CARSON	15	Williams,Roger L.	P	5:30 pm	6:45 pm	TUES, THURS
ACC	135	1004	FALLON	0		P			
ACC	202	1005	DOUGLAS	0		VR			
BUS	101	1001	CARSON	27	Whitcomb,Robert	EN	11:00 am	12:15 pm	TUES, THURS
BUS	107	1001	CARSON	18	Semas,Leonard A.	P	4:00 pm	6:45 pm	WED
BUS	108	1001	CARSON	11	Semas,Leonard A.	P	4:00 pm	6:45 pm	THURS
BUS	109	1004	WEB	30	Hillis,David G.	WB			
BUS	110	1001	CARSON	12	Hunter,Donatelia	P	5:00 pm	7:45 pm	WED
BUS	108	1003	FALLON	8	Stewart,Richard A.	P	4:00 pm	6:45 pm	TUES
BUS	101	1002	CARSON	24	Hunter,Donatella	P	5:30 pm	8:15 pm	MON
BUS	273	1001	CARSON	20	Winne,Donald	P	5:30 pm	6:45 pm	TUES, THURS
BUS	108	1002	CARSON	16	Semas,Leonard A.	P	4:00 pm	6:45 pm	TUES
BUS	109	1003	FALLON	9	Stewart,Richard A.	EN	1:00 pm	2:15 pm	MON, WED
BUS	109	1006	WEB	14	Hillis,David G.	WB			
BUS	295	1001	CARSON	0		FS			
BUS	109	1007	CARSON	14	Pruitt,Justin T.	P	5:30 pm	6:45 pm	MON, WED
BUS	109	1008	CARSON	0		P			
BUS	101	1003	WEB	30	Whitcomb,Robert	WB			
BUS	101	1004	FALLON	11	Stewart,Richard A.	P	7:00 pm	9:45 pm	WED
BUS	108	1004	CARSON	1	Whitcomb,Robert	IS			
ECON	103	1001	CARSON	12	Etchegoyhen,Paul	P	4:00 pm	5:15 pm	TUES, THURS
ECON	262	1001	CARSON	7	Powers,Susanna B	P	5:30 pm	6:45 pm	MON, WED
ECON	102	1001	CARSON	29	Powers,Susanna B	P	7:00 pm	9:45 pm	WED
ECON	102	1002	WEB	40	Bergan,Nicholas J	WB			
ECON	103	1002	CARSON	0		P			
ECON	103	1004	FALLON	6	Stewart,Richard A.	VS	7:00 pm	9:45 pm	MON
ECON	103	1005	WEB	23	Bergan,Nicholas J	WB			
ECON	103	1006	DOUGLAS	2	Stewart,Richard A.	VR	7:00 pm	9:45 pm	MON
ECON	261	1001	WEB	12	Clifford,Penelope	WB			
ECON	100	1001	CARSON	0		P			
ECON	102	1003	CARSON	23	Bathgate,James	P	7:00 pm	9:45 pm	TUES
FIN	101	1001	WEB	38	Sawyer,Angela M	WB			
FIN	115	1001	CARSON	0		P			
FIN	101	1002	FALLON	0		P			
FIN	101	1003	CARSON	17	Whitcomb,Robert	EN	2:30 pm	3:15 pm	MON, WED
MGT	201	1003	WEB	39	Sawyer,Angela M	WB			

MGT	469	1001	CARSON	8	Whitcomb,Robert	P	4:00 pm	6:45 pm	MON
MGT	367	1001	CARSON	0		EN			
MGT	201	1001	FALLON	0		P			
MGT	103	1001	FALLON	0		P			
MGT	235	1002	FALLON	0		P			
MGT	201	1002	CARSON	12	Whitcomb,Robert	P	4:00 pm	5:15 pm	TUES, THURS
MKT	210	1001	CARSON	23	Whitcomb,Robert	P	1:00 pm	2:15 pm	TUES, THURS
MKT	210	1002	WEB	40	Sawyer,Angela M	WB			
MKT	210	1003	CARSON	15	Etchegoyhen,Paul	P	7:00 pm	9:45 pm	THURS
MKT	295	1001	CARSON	0	Whitcomb,Robert	IS			
RE	101	1001	WEB	25	Brusseau,Kathey A.	WB			
RE	103	1001	WEB	13	Brusseau,Kathey A.	WB			
RE	103	1002	CARSON	0		P			
RE	101	1002	CARSON	0		P			

Enrollment Report Summer 2015

Subject	Catalog Number	Section	Location	Enrollment Total	Instructor Full Name	Instruction Mode	Start time	End time	Days
ACC	180	1001	WEB	18	Kloes, Richard O	WB			
ACC	135	TP2	CARSON	1		P			
BUS	101	1001	WEB	29	Kloes, Richard O	WB			
BUS	101	TP2	CARSON	3		P			
FIN	101	1001	WEB	29	Kloes, Richard O	WB			
MGT	283	1001	WEB	19	Whitcomb, Robert	WB			
MGT	212	1001	WEB	18	Whitcomb, Robert	WB			
MGT	469	1001	CARSON	1	Whitcomb, Robert	IS			
MKT	210	TP2	CARSON	1		P			

Enrollment Report Fall 2015

Subject	Catalog Number	Section	Location	Enrollment Total	Instructor Full Name	Instruction Mode	Room	Start time	End time	Days
ACC	135	1002	WEB	27	Kloes,Richard O	WB	WEB			
ACC	201	1001	CARSON	29	Manke,Vernon W.	P	CED 325	11:00 am	12:15 pm	TUES, THURS
ACC	201	1002	CARSON	25	Austin,Vivian L.	EN	CED 316	5:30 pm	6:45 pm	TUES, THURS
ACC	201	1003	FALLON	9	Kloes,Richard O	VS	VRGH 308	5:30 pm	6:45 pm	MON, WED
ACC	202	1001	CARSON	20	Manke,Vernon W.	P	CED 325	5:30 pm	6:45 pm	TUES, THURS
ACC	223	1001	WEB	17	Akin,Lee S.	WB	WEB			
ACC	203	1001	FALLON	3	Kloes,Richard O	VS	VRGH 308	5:30 pm	6:45 pm	TUES, THURS
ACC	105	1001	CARSON	12	Austin,Vivian L.	EN	CED 315	7:00 pm	9:45 pm	MON
ACC	135	1004	FALLON	8	Kloes,Richard O	VS	VRGH 308	4:00 pm	5:15 pm	MON, WED
ACC	201	1004	WEB	30	Kloes,Richard O	WB	WEB			
ACC	203	1002	CARSON	11	Kloes,Richard O	VR	REYN 101	5:30 pm	6:45 pm	TUES, THURS
ACC	220	1001	WEB	9	Kloes,Richard O	WB	WEB			
ACC	261	1001	CARSON	13	Austin,Vivian L.	EN	CED 313	7:00 pm	9:45 pm	THURS
ACC	201	1005	DOUGLAS	3	Kloes,Richard O	VR	DC MC	5:30 pm	6:45 pm	MON, WED
ACC	135	1001	CARSON	9	Williams,Roger L.	EN	CED 315	11:00 am	12:15 pm	MON, WED
ACC	202	1002	WEB	17	Kloes,Richard O	WB	WEB			
ACC	135	1005	DOUGLAS	5	Kloes,Richard O	VR	DC MC	4:00 pm	5:15 pm	MON, WED
ACC	201	1006	WEB	0		WB				
ACC	105	1002	WEB	0		WB				
ACC	261	1002	WEB	0		WB				
BUS	107	1001	CARSON	28	Semas,Leonard A.	P	CED 313	7:00 pm	9:45 pm	TUES
BUS	108	1001	WEB	31	Stewart,Richard A.	WB	WEB			
BUS	101	1001	CARSON	30	Whitcomb,Robert	EN	CED 109	11:00 am	12:15 pm	TUES, THURS
BUS	107	1003	FALLON	6	Tiede,Loretta Jean	EN	VRGH 302	7:00 pm	9:45 pm	WED
BUS	109	1001	WEB	30	Hillis,David G.	WB	WEB			
BUS	273	1001	CARSON	17	Winne,Donald	P	REYN 111	5:30 pm	6:45 pm	TUES, THURS
BUS	109	1002	CARSON	19	Butterfield,Roberta	P	CED 325	5:30 pm	6:45 pm	MON, WED
BUS	101	1002	WEB	30	Whitcomb,Robert	WB	WEB			
BUS	101	1004	CARSON	25	Stewart,Richard A.	P	CED 313	7:00 pm	9:45 pm	MON
BUS	101	1003	FALLON	17	Stewart,Richard A.	P	PINH 208	4:00 pm	6:45 pm	THURS
BUS	112	1001	CARSON	0		P				
BUS	112	1002	CARSON	0		P				
ECON	102	1001	CARSON	29	Powers,Susanna B	P	CED 316	7:00 pm	8:15 pm	TUES, THURS
ECON	103	1001	CARSON	13	Bathgate,James	P	REYN 113	7:00 pm	9:45 pm	WED
ECON	100	1002	WEB	3	Watts,Alan D.	WB	WEB			
ECON	261	1001	CARSON	15	Powers,Susanna B	P	REYN 111	7:00 pm	9:45 pm	MON
ECON	103	1002	WEB	30	Bergan,Nicholas J	WB	WEB			
ECON	100	1001	WEB	27	Watts,Alan D.	WB	WEB			
ECON	102	1004	WEB	29	Bergan,Nicholas J	WB	WEB			
ECON	261	1002	WEB	14	Clifford,Penelope	WB	WEB			
ECON	102	1003	WEB	29	Bergan,Nicholas J	WB	WEB			
FIN	101	1001	CARSON	16	Whitcomb,Robert	EN	CED 316	2:30 pm	3:45 pm	TUES, THURS
FIN	101	1002	WEB	30	Whitcomb,Robert	WB	WEB			
MGT	103	1001	WEB	39	Sawyer,Angela M	WB	WEB			
MGT	201	1001	FALLON	8	Stewart,Richard A.	P	VRGH 302	7:00 pm	9:45 pm	TUES
MGT	212	1001	CARSON	0		EN				
MGT	367	1001	WEB	5	Whitcomb,Robert	WB	WEB			
MGT	103	1002	CARSON	0		P				
MGT	201	1002	WEB	40	Sawyer,Angela M	WB	WEB			
MGT	212	1002	WEB	32	Stewart,Richard A.	WB	WEB			
MGT	235	1001	CARSON	9	Stewart,Richard A.	P	CED 313	2:30 pm	5:15 pm	MON
MGT	462	1001	CARSON	1	Whitcomb,Robert	IS				
MKT	210	1001	CARSON	28	Whitcomb,Robert	EN	CED 314	4:00 pm	5:15 pm	TUES, THURS
RE	101	1001	WEB	25	Brusseau,Kathey A.	WB	WEB			
RE	103	1001	WEB	13	Brusseau,Kathey A.	WB	WEB			

Enrollment Report Spring 2016

Subject	Catalog Number	Section	Location	Enrollment Total	Instructor Full Name	Instruction Mode	Start time	End time	Days
ACC	202	1004	WEB	19	Kloes,Richard O	WB			
ACC	290	1001	WEB	9	Kloes,Richard O	WB			
ACC	135	1001	WEB	38	Kloes,Richard O	WB			
ACC	201	1001	CARSON	13	Manke,Vernon W.	PI	11:00 am	12:15 pm	TUES, THURS
ACC	201	1002	CARSON	19	Austin,Vivian L.	LC	5:30 pm	6:45 pm	TUES, THURS
ACC	201	1003	WEB	43	Kloes,Richard O	WB			
ACC	202	1001	CARSON	24	Manke,Vernon W.	P	5:30 pm	6:45 pm	TUES, THURS
ACC	223	1001	WEB	16	Akin, Lee S.	WB			
ACC	135	1003	CARSON	19	Williams,Roger L.	P	5:30 pm	6:45 pm	MON, WED
ACC	204	1001	FALLON	0	Kloes,Richard O	VS	5:30 pm	6:45 pm	TUES, THURS
ACC	203	1001	WEB	15	Kloes,Richard O	WB			
ACC	204	1002	CARSON	12	Kloes,Richard O	VR	5:30 pm	6:45 pm	TUES, THURS
ACC	105	1001	WEB	14	Austin,Vivian L.	WB			
ACC	202	1003	DOUGLAS	2	Kloes,Richard O	VR	5:30 pm	6:45 pm	MON, WED
ACC	202	1002	FALLON	8	Kloes,Richard O	VS	5:30 pm	6:45 pm	MON, WED
BUS	108	1002	FALLON	6	Stewart,Richard A.	P	7:00 pm	9:45 pm	TUES
BUS	101	1002	CARSON	28	Whitcomb,Robert	P	11:00 am	12:15 pm	TUES, THURS
BUS	101	1001	CARSON	29	Stewart,Richard A.	P	7:00 pm	9:45 pm	MON
BUS	108	1001	CARSON	20	Semas,Leonard A.	P	5:30 pm	6:45 pm	TUES, THURS
BUS	109	1003	WEB	27	Hillis,David G.	WB			
BUS	101	1003	WEB	28	Whitcomb,Robert	WB			
BUS	101	1004	FALLON	10	Stewart,Richard A.	P	7:00 pm	9:45 pm	THURS
BUS	109	1002	CARSON	18	Butterfield,Roberta	P	5:30 pm	6:45 pm	MON, WED
BUS	273	1001	CARSON	6	Winne,Donald	P	5:30 pm	6:45 pm	TUES, THURS
BUS	109	1001	FALLON	8	Stewart,Richard A.	P	4:00 pm	5:15 pm	TUES, THURS
BUS	271	1001	CARSON	8	Whitcomb,Robert	P	4:00 pm	5:15 pm	TUES, THURS
BUS	273	1002	WEB	28	Russom,Tina M.	WB			
BUS	295	1001	CARSON	1	Whitcomb,Robert	IS			
ECON	102	1002	WEB	39	Bergan,Nicholas J	WB			
ECON	103	1001	CARSON	18	Stewart,Richard A.	P	4:00 pm	6:45 pm	MON
ECON	262	1001	CARSON	13	Powers,Susanna B	PI	7:00 pm	9:45 pm	MON
ECON	102	1001	CARSON	30	Bathgate,James	P	7:00 pm	9:45 pm	TUES
ECON	103	1005	WEB	27	Bergan,Nicholas J	WB			
ECON	262	1002	WEB	0		WB			
ECON	102	1003	WEB	37	Bergan,Nicholas J	WB			
FIN	101	1001	WEB	26	Whitcomb,Robert	WB			
FIN	101	1002	CARSON	26	Whitcomb,Robert	EN	2:30 pm	3:45 pm	TUES, THURS
MGT	201	1001	WEB	38	Sawyer,Angela M	WB			
MGT	235	1002	WEB	39	Sawyer,Angela M	WB			
MGT	201	1002	CARSON	11	Bouchard,Cheryl K.	P	5:30 pm	8:15 pm	MON
MGT	283	1001	WEB	28	Whitcomb,Robert	WB			
MGT	462	1001	WEB	7	Whitcomb,Robert	WB			
MGT	103	1001	CARSON	3	Whitcomb,Robert	IS			
MGT	367	1001	CARSON	1	Whitcomb,Robert	IS			
MGT	469	1001	CARSON	1	Whitcomb,Robert	IS			
MKT	210	1001	FALLON	7	Stewart,Richard A.	P	7:00 pm	9:45 pm	WED
MKT	210	1002	WEB	40	Sawyer,Angela M	WB			
RE	101	1001	CARSON	10	Brusseau,Kathey A.	EN	9:00 am	11:45 am	SAT
RE	103	1001	CARSON	12	Brusseau,Kathey A.	EN	1:00 pm	3:45 pm	SAT

Enrollment Report Summer 2016

Subject	Catalog Number	Section	Location	Enrollment Total	Instructor Full Name	Instruction Mode	Start time	End time	Days
ACC	180	4001	WEB	11	Kloes, Richard O	WB			
BUS	107	1001	CARSON	13	Kubistant, Thomas M	P	5:15 pm	8:00 pm	MON, WED
MGT	462	1001	CARSON	1	White, Georgia A.	IS			
MKT	127	4001	WEB	17	Whitcomb, Robert	WB			

Enrollment Report Fall 2016

Subject	Catalog Number	Section	Location	Enrollment Total	Instructor Full Name	Instruction Mode	Start time	End time	Days
ACC	135	4001	WEB	22	Kloes,Richard O	WB			
ACC	201	1001	CARSON	24	Manke,Vernon W.	P	11:00 am	12:15 pm	TUES, THURS
ACC	201	1002	CARSON	25	Austin,Vivian L.	LC	5:30 pm	6:45 pm	TUES, THURS
ACC	201	3001	FALLON	7	Kloes,Richard O	VS	5:30 pm	6:45 pm	MON, WED
ACC	202	1001	CARSON	19	Manke,Vernon W.	P	5:30 pm	6:45 pm	TUES, THURS
ACC	223	4001	WEB	13	Akin,Lee S.	WB			
ACC	203	3001	FALLON	3	Kloes,Richard O	VS	5:30 pm	6:45 pm	TUES, THURS
ACC	105	1001	CARSON	0		LC			
ACC	135	3001	FALLON	5	Kloes,Richard O	VS	4:00 pm	5:15 pm	MON, WED
ACC	201	4001	WEB	35	Kloes,Richard O	WB			
ACC	203	1001	CARSON	1	Kloes,Richard O	VR	5:30 pm	6:45 pm	TUES, THURS
ACC	261	1001	CARSON	9	Austin,Vivian L.	LC	7:00 pm	9:45 pm	THURS
ACC	201	2001	DOUGLAS	1	Kloes,Richard O	VR	5:30 pm	6:45 pm	MON, WED
ACC	135	2001	DOUGLAS	0		VR			
ACC	135	1001	CARSON	10	Sadowski,Kimberly	EN	11:00 am	12:15 pm	MON, WED
ACC	202	4001	WEB	9	Kloes,Richard O	WB			
ACC	299	4001	WEB	4	Kloes,Richard O	WB			
BUS	101	1001	CARSON	23	Whitcomb,Robert	EN	1:00 pm	2:15 pm	TUES, THURS
BUS	107	1001	CARSON	24	Semas,Leonard A.	P	5:30 pm	6:45 pm	MON, WED
BUS	108	4001	WEB	29	Stewart,Richard A.	WB			
BUS	101	4001	WEB	27	Whitcomb,Robert	WB			
BUS	101	3001	FALLON	6	Stewart,Richard A.	P	4:00 pm	6:45 pm	WED
BUS	101	1002	CARSON	21	Bouchard,Cheryl K.	P	5:30 pm	8:15 pm	WED
BUS	109	4001	WEB	28	Hillis,David G.	WB			
BUS	273	1001	CARSON	0		P			
BUS	109	1001	CARSON	21	Butterfield,Roberta	P	11:00 am	12:15 pm	MON, WED
BUS	273	4001	WEB	19	Russom,Tina M.	WB			
BUS	109	3001	FALLON	5	Stewart,Richard A.	VS	7:00 pm	9:45 pm	WED
BUS	110	4001	WEB	20	Sawyer,Angela M	WB			
BUS	273	3001	FALLON	5	Mills,Lane R.	VS	7:00 pm	9:45 pm	TUES
BUS	109	2001	DOUGLAS	3	Stewart,Richard A.	VR	7:00 pm	9:45 pm	WED
BUS	109	1020	CARSON	15	Housken,Diane W.	P	4:00 pm	5:15 pm	TUES, THURS
BUS	273	1002	CARSON	2	Mills,Lane R.	VR	7:00 pm	9:45 pm	TUES
ECON	102	1001	CARSON	30	Powers,Susanna B	P	7:00 pm	9:45 pm	MON
ECON	103	1001	CARSON	7	Bathgate,James	P	2:30 pm	3:45 pm	TUES, THURS
ECON	261	1001	CARSON	19	Powers,Susanna B	PI	7:00 pm	9:45 pm	TUES
ECON	103	4001	WEB	28	Bergan,Nicholas J	WB			
ECON	261	4001	WEB	17	Clifford,Penelope	WB			
ECON	102	4001	WEB	29	Bergan,Nicholas J	WB			
ECON	100	4001	WEB	30	Watts,Alan D.	WB			
ECON	102	2001	DOUGLAS	8	Stewart,Richard A.	VR	7:00 pm	9:45 pm	THURS
ECON	102	3001	FALLON	13	Stewart,Richard A.	VS	7:00 pm	9:45 pm	THURS
ECON	102	4002	WEB	30	Stewart,Richard A.	WB			
ECON	100	4052	WEB	0		WB			
FIN	101	4001	WEB	22	Whitcomb,Robert	WB			
MGT	103	4001	WEB	21	Sawyer,Angela M	WB			
MGT	201	4001	WEB	25	Sawyer,Angela M	WB			
MGT	235	1001	CARSON	0		P			
MGT	103	1001	CARSON	4	Semas,Leonard A.	P	7:00 pm	9:45 pm	WED

MGT	283	1001	CARSON	0		EN			
MGT	323	4001	WEB	6	Whitcomb,Robert	WB			
MGT	212	1001	CARSON	0		P			
MGT	283	1002	CARSON	2	Whitcomb,Robert	IS			
MKT	210	1001	CARSON	13	Whitcomb,Robert	EN	4:00 pm	6:45 pm	THURS
MKT	210	4001	WEB	22	Whitcomb,Robert	WB			
RE	101	4001	WEB	27	Brusseau,Kathey A.	WB			
RE	103	4001	WEB	11	Brusseau,Kathey A.	WB			

Enrollment Report Spring 2017

Subject	Catalog Number	Section	Location	Enrollment Total	Instructor Full Name	Instruction Mode	Start time	End time	Days
ACC	202	4001	WEB	14	Kloes,Richard O	WB			
ACC	290	4001	WEB	4	Kloes,Richard O	WB			
ACC	203	4001	WEB	3	Kloes,Richard O	WB			
ACC	105	4001	WEB	9	Austin,Vivian L.	WB			
ACC	135	4001	WEB	17	Kloes,Richard O	WB			
ACC	201	1001	CARSON	18	Manke,Vernon W.	PI	11:00 am	12:15 pm	TUES, THURS
ACC	201	1002	CARSON	14	Austin,Vivian L.	LC	5:30 pm	6:45 pm	TUES, THURS
ACC	201	4001	WEB	35	Kloes,Richard O	WB			
ACC	202	1001	CARSON	22	Manke,Vernon W.	P	5:30 pm	6:45 pm	TUES, THURS
ACC	223	4001	WEB	11	Akin,Lee S.	WB			
ACC	135	1001	CARSON	11	Sadowski,Kimberly	P	5:30 pm	6:45 pm	MON, WED
ACC	202	3001	FALLON	3	Kloes,Richard O	P	5:30 pm	6:45 pm	MON, WED
ACC	220	4001	WEB	5	Kloes,Richard O	WB			
BUS	109	1002	CARSON	12	Stewart,Richard A.	P	4:00 pm	6:45 pm	THURS
BUS	101	1002	CARSON	10	Whitcomb,Robert	P	1:00 pm	2:15 pm	TUES, THURS
BUS	273	1001	CARSON	0		P			
BUS	101	1001	CARSON	16	Stewart,Richard A.	P	7:00 pm	9:45 pm	MON
BUS	108	1001	CARSON	17	Semas,Leonard A.	P	7:00 pm	8:15 pm	MON, WED
BUS	109	4001	WEB	18	Hillis,David G.	WB			
BUS	110	4001	WEB	19	Sawyer,Angela M	WB			
BUS	109	1001	CARSON	0		P			
BUS	273	4001	WEB	12	Russom,Tina M.	WB			
BUS	101	4001	WEB	53	Whitcomb,Robert	WB			
BUS	107	1001	CARSON	11	Semas,Leonard A.	P	5:30 pm	6:45 pm	MON, WED
BUS	110	1001	CARSON	0		EN			
ECON	103	1001	CARSON	19	Powers,Susanna B	P	7:00 pm	9:45 pm	MON
ECON	262	1001	CARSON	12	Powers,Susanna B	PI	7:00 pm	9:45 pm	TUES
ECON	102	1001	CARSON	24	Stewart,Richard A.	P	4:00 pm	6:45 pm	MON
ECON	103	1002	CARSON	0		P			
ECON	102	1002	CARSON	30	Bathgate,James	P	2:30 pm	3:45 pm	TUES, THURS
ECON	103	3001	FALLON	0		VS			
ECON	262	4001	WEB	9	Clifford,Penelope	WB			
ECON	102	4001	WEB	43	Stewart,Richard A.	WB			
ECON	103	4002	WEB	10	Stewart,Richard A.	WB			
ECON	103	2001	DOUGLAS	0		VR			
ECON	103	4001	WEB	21	Stewart,Richard A.	WB			
FIN	101	4001	WEB	27	Whitcomb,Robert	WB			
FIN	101	3051	FALLON	22	Morgan,Sharon R	EN	9:00 am	12:15 pm	MON, TUES, WED, THURS, FRI
FIN	101	3052	FALLON	24	York,Eric M	EN	9:00 am	12:15 pm	MON, TUES, WED, THURS, FRI
MGT	201	4001	WEB	17	Sawyer,Angela M	WB			
MGT	103	3001	FALLON	0		EN			
MGT	469	4001	WEB	0		WB			
MGT	201	1001	CARSON	0		P			
MGT	235	4001	WEB	17	Sawyer,Angela M	WB			
MGT	469	1001	WEB	1	White,Georgia A.	IO			

MKT	210	1001	CARSON	13	Whitcomb,Robert	P	4:00 pm	6:45 pm	THURS
MKT	210	4001	WEB	32	Whitcomb,Robert	WB			
MKT	262	1001	CARSON	0		P			
MKT	262	1002	CARSON	1	Whitcomb,Robert	IS			
RE	103	4001	WEB	15	Brusseau,Kathey A.	WB			
RE	101	4001	WEB	17	Brusseau,Kathey A.	WB			

Enrollment Report Summer 2017

Subject	Catalog Number	Section	Class Number	Location	Class Status	Enrollment Total	Instructor Full Name	Instruction Mode	Room	Start time	End time	Days
ACC	180	4001	50369	WEB	A	14	Kloes, Richard O	WB	WEB			
BUS	101	TP2	52447	CARSON	A	3		P				
MGT	462	4001	52384	WEB	A	1	White, Georgia A.	IO	WEB			
MGT	103	TP2	52488	CARSON	A	2		P				
MKT	127	4001	50380	WEB	A	13	Whitcomb, Robert	WB	WEB			
MKT	210	TP2	52448	CARSON	A	3		P				

Enrollment Report Fall 2017

Subject	Catalog Number	Section	Location	Enrollment Total	Instructor Full Name	Instruction Mode	Start time	End time	Days
ACC	135	4001	WEB	14	Kloes,Richard O	WB			
ACC	201	1001	CARSON	27	Manke,Vernon W.	P	11:00 am	12:15 pm	TUES, THURS
ACC	201	1002	CARSON	14	Austin,Vivian L.	EN	5:30 pm	6:45 pm	TUES, THURS
ACC	201	3001	FALLON	3	Kloes,Richard O	VS	5:30 pm	6:45 pm	MON, WED
ACC	202	1001	CARSON	23	Manke,Vernon W.	P	5:30 pm	6:45 pm	TUES, THURS
ACC	223	4001	WEB	14	Akin,Lee S.	WB			
ACC	135	1001	CARSON	10	Morgan,Sharon R	EN	11:00 am	12:15 pm	MON, WED
ACC	202	4001	WEB	16	Kloes,Richard O	WB			
ACC	203	3001	FALLON	2	Kloes,Richard O	VS	5:30 pm	6:45 pm	TUES, THURS
ACC	135	3001	FALLON	3	Kloes,Richard O	VS	4:00 pm	5:15 pm	MON, WED
ACC	201	4001	WEB	40	Kloes,Richard O	WB			
ACC	203	1001	CARSON	4	Kloes,Richard O	VR	5:30 pm	6:45 pm	TUES, THURS
ACC	261	1001	CARSON	12	Austin,Vivian L.	EN	7:00 pm	9:45 pm	THURS
ACC	201	2001	DOUGLAS	3	Kloes,Richard O	VR	5:30 pm	6:45 pm	MON, WED
ACC	105	4001	WEB	11	Austin,Vivian L.	WB			
ACC	135	2001	DOUGLAS	1	Kloes,Richard O	VR	4:00 pm	5:15 pm	MON, WED
BUS	101	1001	CARSON	16	Watts,Alan D.	EN	5:30 pm	8:15 pm	THURS
BUS	107	1001	CARSON	16	Semas,Leonard A.	P	5:30 pm	6:45 pm	MON, WED
BUS	108	4001	WEB	29	Stewart,Richard A.	WB			
BUS	109	4001	WEB	20	Butterfield,Roberta	WB			
BUS	109	1001	CARSON	17	Butterfield,Roberta	P	1:00 pm	2:15 pm	TUES, THURS
BUS	101	4001	WEB	22	Whitcomb,Robert	WB			
BUS	101	3001	FALLON	8	Stewart,Richard A.	P	5:30 pm	8:15 pm	MON
BUS	101	1002	CARSON	29	Butterfield,Roberta	EN	9:30 am	10:45 am	TUES, THURS
BUS	110	4001	WEB	11	Sawyer,Angela M	WB			
BUS	273	4001	WEB	8	Russom,Tina M.	WB			
BUS	273	1001	CARSON	0		P			
BUS	108	1001	CARSON	0		P			
BUS	110	1001	CARSON	6	Holt,Angela Andrea	P	5:30 pm	6:45 pm	MON, WED
BUS	299	1001	CARSON	1	Stewart,Richard A.	IS			
BUS	101	4002	WEB	9	Whitcomb,Robert	WB			
BUS	108	1020	CARSON	23	Semas,Leonard A.	P	7:15 pm	8:30 pm	MON, WED
ECON	103	1001	CARSON	0		P			
ECON	102	1001	CARSON	28	Powers,Susanna B	P	7:00 pm	9:45 pm	TUES
ECON	103	4001	WEB	29	Stewart,Richard A.	WB			
ECON	102	4001	WEB	29	Stewart,Richard A.	WB			
ECON	261	1001	CARSON	16	Powers,Susanna B	PI	7:00 pm	9:45 pm	MON
ECON	261	4001	WEB	19	Clifford,Penelope	WB			
ECON	100	4001	WEB	27	Butterfield,Roberta	WB			
ECON	102	4002	WEB	22	Stewart,Richard A.	WB			
ECON	103	4002	WEB	7	Stewart,Richard A.	WB			
ECON	103	3001	FALLON	1	Stewart,Richard A.	IS			
FIN	101	4001	WEB	11	Whitcomb,Robert	WB			
MGT	103	4001	WEB	7	Sawyer,Angela M	WB			
MGT	201	4001	WEB	14	Dodge,Darla J	WB			
MGT	283	4001	WEB	6	Whitcomb,Robert	WB			
MGT	212	4001	WEB	8	Whitcomb,Robert	WB			
MGT	367	4001	WEB	1	Whitcomb,Robert	WB			
MGT	235	4001	WEB	0		WB			

MGT	201	1001	CARSON	0		EN			
MGT	103	1001	CARSON	0		EN			
MGT	469	4001	WEB	2	White,Georgia A.	IO			
MKT	210	4001	WEB	20	Whitcomb,Robert	WB			
MKT	210	1001	CARSON	5	Butterfield,Roberta	EN	4:00 pm	6:45 pm	THURS
MKT	261	4001	WEB	0		WB			
RE	101	4001	WEB	21	Brusseau,Kathey A.	WB			
RE	103	4001	WEB	0		WB			

Enrollment Report Spring 2018

Subject	Catalog Number	Section	Location	Enrollment Total	Instructor Full Name	Instruction Mode	Start time	End time	Days
ACC	105	4001	WEB	3	Austin,Vivian L.	WB			
ACC	135	1001	CARSON	6	Anderson,Jordan Taylor	P	5:30 pm	6:45 pm	MON, WED
ACC	201	1001	CARSON	20	Manke,Vernon W.	PI	11:00 am	12:15 pm	TUES, THURS
ACC	201	1002	CARSON	8	Austin,Vivian L.	LC	5:30 pm	6:45 pm	TUES, THURS
ACC	201	4001	WEB	28	Kloes,Richard O	WB			
ACC	202	1001	CARSON	17	Manke,Vernon W.	P	5:30 pm	6:45 pm	TUES, THURS
ACC	223	4001	WEB	9	Akin,Lee S.	WB			
ACC	202	4001	WEB	15	Kloes,Richard O	WB			
ACC	290	4001	WEB	4	Kloes,Richard O	WB			
ACC	135	4001	WEB	17	Kloes,Richard O	WB			
ACC	203	4001	WEB	5	Kloes,Richard O	WB			
ACC	202	3001	FALLON	0		VS			
ACC	204	3001	FALLON	2	Kloes,Richard O	P	5:30 pm	6:45 pm	TUES, THURS
ACC	202	2001	DOUGLAS	0		VR			
ACC	204	1001	CARSON	0		VR			
BUS	108	1001	CARSON	14	Semas,Leonard A.	P	7:00 pm	8:15 pm	MON, WED
BUS	109	4001	WEB	15	Butterfield,Roberta	WB			
BUS	101	1002	CARSON	24	Butterfield,Roberta	EN	4:00 pm	6:45 pm	THURS
BUS	109	1001	CARSON	6	Butterfield,Roberta	P	1:00 pm	2:15 pm	TUES, THURS
BUS	273	4001	WEB	9	Russom,Tina M.	WB			
BUS	101	4001	WEB	27	Whitcomb,Robert	WB			
BUS	107	1001	CARSON	9	Semas,Leonard A.	P	5:30 pm	6:45 pm	MON, WED
BUS	110	4001	WEB	9	Sawyer,Angela M	WB			
BUS	299	1001	CARSON	5	Stewart,Richard A.	P	4:00 pm	6:45 pm	WED WED
BUS	110	1001	CARSON	7	Holt,Angela Andrea	P	4:00 pm	5:15 pm	MON, WED
BUS	273	1001	CARSON	4	Winne,Donald	P	5:30 pm	6:45 pm	TUES, THURS
BUS	101	4002	WEB	17	Whitcomb,Robert	WB			
ECON	103	1001	CARSON	27	Powers,Susanna B	P	7:00 pm	9:45 pm	MON
ECON	262	1001	CARSON	13	Powers,Susanna B	PI	7:00 pm	9:45 pm	TUES
ECON	102	1002	CARSON	29	Stewart,Richard A.	P	4:00 pm	6:45 pm	TUES
ECON	102	4001	WEB	30	Stewart,Richard A.	WB			
ECON	103	4001	WEB	23	Stewart,Richard A.	WB			
ECON	262	4001	WEB	8	Clifford,Penelope	WB			
ECON	103	1002	CARSON	0		P			
ECON	100	4001	WEB	30	Butterfield,Roberta	WB			
FIN	101	4001	WEB	15	Whitcomb,Robert	WB			
FIN	115	4001	WEB	6	Whitcomb,Robert	WB			
FIN	101	3051	FALLON	19	Morgan,Sharon R	EN	9:00 am	12:15 pm	MON, TUES, WED, THURS, FRI
MGT	201	4001	WEB	21	Stewart,Richard A.	WB			
MGT	235	4001	WEB	4	Whitcomb,Robert	WB			
MGT	462	4001	WEB	9	Whitcomb,Robert	WB			
MGT	367	4001	WEB	4	White,Georgia A.	IO			
MGT	469	4001	WEB	4	White,Georgia A.	IO			
MGT	367	4002	WEB	3	White,Georgia A.	IO			
MGT	469	4002	WEB	3	White,Georgia A.	WB			
MGT	367	4003	WEB	1	White,Georgia A.	IO			
MGT	469	4003	WEB	1	White,Georgia A.	IO			

MGT	295	4001	WEB	1	White,Georgia A.	IO			
MKT	210	1001	CARSON	22	Butterfield,Roberta	P	9:30 am	10:45 am	TUES, THURS
MKT	210	4001	WEB	14	Whitcomb,Robert	WB			
RE	103	4001	WEB	15	Brusseau,Kathey A.	WB			
RE	101	4001	WEB	13	Brusseau,Kathey A.	WB			

Enrollment Report Summer 2018

Subject	Catalog Number	Section	Location	Enrollment Total	Instructor Full Name	Instruction Mode	Start time	End time	Days
ACC	180	4001	WEB	5	Kloes,Richard O	WB			
ACC	220	4001	WEB	9	Kloes,Richard O	WB			
BUS	101	TP2	CARSON	7		P			
BUS	109	4001	WEB	0		WB			
ECON	100	4001	WEB	21	Butterfield,Roberta	WB			
ECON	103	1001	CARSON	0		EN			
MGT	103	TP2	CARSON	7		P			
MGT	469	1001	CARSON	1	White,Georgia A.	IS			
MGT	367	1001	CARSON	0		IS			
MKT	127	4001	WEB	4	Whitcomb,Robert	WB			
MKT	210	TP2	CARSON	7		P			

Enrollment Report Fall 2018

Subject	Catalog Number	Section	Location	Enrollment Total	Instructor Full Name	Instruction Mode	Start time	End time	Days
ACC	203	3001	FALLON	0		VS			
ACC	135	4001	WEB	20	Kloes,Richard O	WB			
ACC	201	1001	CARSON	23	Manke,Vernon W.	P	11:00 am	12:15 pm	TUES, THURS
ACC	201	1002	CARSON	18	Kloes,Richard O	VR	5:30 pm	6:45 pm	MON, WED
ACC	201	3001	FALLON	3	Kloes,Richard O	VS	5:30 pm	6:45 pm	MON, WED
ACC	202	1001	CARSON	12	Manke,Vernon W.	P	5:30 pm	6:45 pm	TUES, THURS
ACC	223	4001	WEB	8	Akin,Lee S.	WB			
ACC	135	1001	CARSON	7	Kloes,Richard O	VR	4:00 pm	5:15 pm	MON, WED
ACC	202	4001	WEB	14	Kloes,Richard O	WB			
ACC	135	3001	FALLON	2	Kloes,Richard O	VS	4:00 pm	5:15 pm	MON, WED
ACC	201	4001	WEB	44	Kloes,Richard O	WB			
ACC	203	1001	CARSON	0		VR			
ACC	261	1001	CARSON	0		EN			
ACC	204	4001	WEB	3	Kloes,Richard O	IO			
BUS	101	1001	CARSON	24	Whitcomb,Robert	EN	9:30 am	10:45 am	MON, WED
BUS	107	1001	CARSON	11	Semas,Leonard A.	P	5:30 pm	6:45 pm	MON, WED
BUS	108	4001	WEB	18	Stewart,Richard A.	WB			
BUS	109	4001	WEB	27	Cromack,Tyler Kane	WB			
BUS	109	1001	CARSON	0		P			
BUS	108	1001	CARSON	9	Semas,Leonard A.	P	7:00 pm	8:15 pm	MON, WED
BUS	101	4001	WEB	25	Whitcomb,Robert	WB			
BUS	101	3001	FALLON	10	Stewart,Richard A.	P	5:30 pm	8:15 pm	MON
BUS	101	1002	CARSON	19	Anderson,Jordan Taylor	EN	5:30 pm	6:45 pm	TUES, THURS
BUS	110	4001	WEB	12	Sawyer,Angela M	WB			
BUS	273	4001	WEB	4	Russom,Tina M.	WB			
BUS	110	1001	CARSON	0		P			
BUS	101	4002	WEB	20	Whitcomb,Robert	WB			
BUS	273	1001	CARSON	0		P			
ECON	102	1001	CARSON	30	Stewart,Richard A.	P	5:30 pm	8:15 pm	TUES
ECON	103	4001	WEB	29	Stewart,Richard A.	WB			
ECON	261	1001	CARSON	0		EN			
ECON	261	4001	WEB	34	Clifford,Penelope	WB			
ECON	102	4001	WEB	27	Stewart,Richard A.	WB			
ECON	100	1001	CARSON	18	Culp,Lisa	EN	9:30 am	10:45 am	TUES, THURS
ECON	100	1051	CARSON	15	Culp,Lisa	EN	9:30 am	10:45 am	MON, WED
FIN	101	4001	WEB	13	Whitcomb,Robert	WB			
FIN	101	1001	CARSON	0		EN			
MGT	103	4001	WEB	8	Sawyer,Angela M	WB			
MGT	212	4001	WEB	9	Whitcomb,Robert	WB			
MGT	323	4001	WEB	7	Sawyer,Angela M	WB			
MGT	462	1001	CARSON	2	White,Georgia A.	IS			
MGT	469	1001	CARSON	3	White,Georgia A.	IS			
MGT	367	1001	CARSON	3	White,Georgia A.	IS			
MGT	462	1002	CARSON	1	White,Georgia A.	IO			
MKT	210	4001	WEB	23	Whitcomb,Robert	WB			
MKT	210	4002	WEB	5	Whitcomb,Robert	WB			
RE	101	4001	WEB	28	Brusseau,Kathey A.	WB			

Enrollment Report Spring 2019

Subject	Catalog Number	Section	Location	Enrollment Total	Instructor Full Name	Instruction Mode	Start time	End time	Days
ACC	201	1001	CARSON	22	Manke,Vernon W.	PI	11:00 am	12:15 pm	TUES, THURS
ACC	201	4001	WEB	43	Kloes,Richard O	WB			
ACC	202	1001	CARSON	15	Kloes,Richard O	VR	5:30 pm	6:45 pm	MON, WED
ACC	223	4001	WEB	8	Akin, Lee S.	WB			
ACC	202	4001	WEB	18	Kloes,Richard O	WB			
ACC	290	4001	WEB	5	Kloes,Richard O	WB			
ACC	135	4001	WEB	23	Kloes,Richard O	WB			
ACC	203	4001	WEB	2	Kloes,Richard O	IO			
ACC	105	4001	WEB	7	Austin,Vivian L.	WB			
ACC	135	1001	CARSON	0		P			
ACC	105	1001	CARSON	0		VR			
ACC	105	3001	FALLON	0		VS			
ACC	202	3001	FALLON	3	Kloes,Richard O	VS	5:30 pm	6:45 pm	MON, WED
ACC	135	4002	WEB	0		WB			
ACC	201	1002	CARSON	14	Austin,Vivian L.	EN	5:30 pm	6:45 pm	TUES, THURS
ACC	203	4002	WEB	0		IO			
ACC	223	4002	WEB	0		WB			
ACC	202	4002	WEB	0		WB			
ACC	105	4002	WEB	0		WB			
BUS	108	1001	CARSON	0		P			
BUS	110	1001	CARSON	0		P			
BUS	299	1001	CARSON	3	Whitcomb,Robert	EN	4:00 pm	6:45 pm	TUES
BUS	109	4001	WEB	22	Sawyer,Angela M	WB			
BUS	101	1001	CARSON	19	Mackenzie,Miya	EN	1:00 pm	2:15 pm	MON, WED
BUS	273	4001	WEB	12	Russom,Tina M.	WB			
BUS	101	4001	WEB	18	Whitcomb,Robert	WB			
BUS	107	4001	WEB	29	Semas,Leonard A.	WB			
BUS	299	4001	WEB	2	Whitcomb,Robert	IO			
BUS	101	4002	WEB	19	Mackenzie,Miya	WB			
ECON	103	1001	CARSON	0	Bathgate,James	P			
ECON	262	4001	WEB	17	Clifford,Penelope	WB			
ECON	100	4001	WEB	27	Sawyer,Angela M	WB			
ECON	102	4001	WEB	26	Bathgate,James	WB			
ECON	103	4001	WEB	28	Bathgate,James	WB			
ECON	103	4002	WEB	0		WB			
ECON	262	4002	WEB	0		WB			
ECON	102	4002	WEB	24	Bathgate,James	WB			
ECON	103	3001	FALLON	0		P			
FIN	101	4001	WEB	19	Whitcomb,Robert	WB			
FIN	101	3052	FALLON	24	Morgan,Sharon R	EN	9:00 am	12:15 pm	MON, TUES, WED, THURS, FRI
FIN	101	3053	FALLON	17	York,Eric M	PI	9:00 am	12:15 pm	MON, TUES, WED, THURS, FRI
MGT	201	1001	CARSON	16	Semas,Leonard A.	P	5:30 pm	6:45 pm	MON, WED
MGT	469	4001	WEB	3	Whitcomb,Robert	WB			
MGT	283	4001	WEB	10	Whitcomb,Robert	WB			
MGT	462	1001	CARSON	3	White,Georgia A.	IS			
MKT	210	1001	CARSON	18	Whitcomb,Robert	EN	9:30 am	10:45 am	MON, WED

MKT	210	4001	WEB	17	Whitcomb,Robert	WB			
MKT	210	4002	WEB	0		WB			
RE	103	4001	WEB	18	Brusseau,Kathey A.	WB			
RE	101	4001	WEB	15	Brusseau,Kathey A.	WB			
RE	103	4002	WEB	0		WB			
RE	101	4002	WEB	0		WB			

Enrollment Report Summer 2019

Subject	Catalog Number	Section	Location	Enrollment Total	Instructor Full Name	Instruction Mode	Start time	End time	Days
ACC	220	4001	WEB	3	Kloes, Richard O	WB			
ACC	180	4001	WEB	6	Kloes, Richard O	WB			
ACC	295	1001	FALLON	1	Kloes, Richard O	IS			
ACC	135	TP2	CARSON	1		P			
BUS	101	TP2	CARSON	10		P			
BUS	101	4001	WEB	18	Whitcomb, Robert	WB			
BUS	110	TP2	CARSON	1		P			
ECON	100	4001	WEB	16	Sawyer, Angela M	WB			
FIN	101	4001	WEB	2	Whitcomb, Robert	WB			
MGT	103	TP2	CARSON	9		P			
MGT	469	1001	CARSON	2	White, Georgia A.	IS			
MGT	462	1001	CARSON	4	White, Georgia A.	IS			
MKT	127	4001	WEB	0		WB			
MKT	210	TP2	CARSON	9		P			

Enrollment Report Fall 2019

Subject	Catalog Number	Section	Location	Enrollment Total	Instructor Full Name	Instruction Mode	Start time	End time	Days
ACC	135	4001	WEB	23	Kloes,Richard O	WB			
ACC	201	1001	CARSON	19	Austin,Vivian L.	EN	11:00 am	12:15 pm	TUES, THURS
ACC	201	1002	CARSON	4	Kloes,Richard O	RO	5:30 pm	6:45 pm	MON, WED
ACC	201	3001	FALLON	2	Kloes,Richard O	SO	5:30 pm	6:45 pm	MON, WED
ACC	202	1001	CARSON	13	Kloes,Richard O	RO	5:30 pm	6:45 pm	TUES, THURS
ACC	223	4001	WEB	9	Akin, Lee S.	WB			
ACC	135	1001	CARSON	8	Kloes,Richard O	RO	4:00 pm	5:15 pm	MON, WED
ACC	202	4001	WEB	19	Kloes,Richard O	WB			
ACC	135	3001	FALLON	2	Kloes,Richard O	SO	4:00 pm	5:15 pm	MON, WED
ACC	201	4001	WEB	41	Kloes,Richard O	WB			
ACC	204	4001	WEB	3	Kloes,Richard O	WB			
ACC	261	1001	CARSON	0		EN			
ACC	202	3001	FALLON	1	Kloes,Richard O	SO	5:30 pm	6:45 pm	TUES, THURS
ACC	135	4002	WEB	0		WB			
ACC	201	4002	WEB	0		WB			
ACC	204	4002	WEB	0		WB			
ACC	202	4002	WEB	0		WB			
ACC	223	4002	WEB	0		WB			
ACC	201	2001	DOUGLAS	5	Kloes,Richard O	RO	5:30 pm	6:45 pm	MON, WED
ACC	203	4001	WEB	9	Kloes,Richard O	WB			
ACC	261	4001	WEB	3	Austin,Vivian L.	WB			
BUS	107	1001	CARSON	10	Semas,Leonard A.	P	5:30 pm	6:45 pm	MON, WED
BUS	108	4001	WEB	19	Sawyer,Angela M	WB			
BUS	101	4001	WEB	28	Sawyer,Angela M	WB			
BUS	101	1001	CARSON	24	Chandler,Carrie M	EN	5:30 pm	6:45 pm	TUES, THURS
BUS	101	4003	WEB	0		WB			
BUS	109	1001	CARSON	9	Usinger,Carolyn	P	4:00 pm	5:15 pm	MON, WED
BUS	273	1001	CARSON	6	Winne,Donald	P	5:30 pm	6:45 pm	TUES, THURS
BUS	110	1001	CARSON	0		P			
BUS	101	5001	FERNLEY	0		EN			
BUS	101	4002	WEB	1	Sawyer,Angela M	WB			
BUS	108	1041	CARSON	10	Medina,Cynara Michelle	P	5:30 pm	6:45 pm	MON, WED
BUS	107	8055	SLVRSRNGS	0		P			
BUS	108	8055	SLVRSRNGS	0		P			
BUS	101	1041	CARSON	22	Ash,Robert J.	P	5:30 pm	6:45 pm	TUES, THURS
BUS	101	8055	SLVRSRNGS	0		P			
ECON	261	4001	WEB	36	Clifford,Penelope	WB			
ECON	102	4001	WEB	29	Bathgate,James	WB			
ECON	103	4001	WEB	24	Bathgate,James	WB			
ECON	102	1001	CARSON	29	Anderson,Jordan Taylor	P	5:30 pm	8:15 pm	MON
ECON	100	1001	CARSON	7	Humpherys,Isaac	EN	4:00 pm	5:15 pm	MON, WED
ECON	100	1051	CARSON	0		EN			
ECON	103	4002	WEB	0		WB			
ECON	102	4002	WEB	2	Bathgate,James	WB			
ECON	102	4003	WEB	13	Bathgate,James	WB			
MGT	212	1001	CARSON	0		EN			
MGT	367	4001	WEB	5	Lusk,Tiara	WB			
MGT	103	1001	CARSON	0		EN			
MGT	201	4001	WEB	24	Dodge,Darla J	WB			
MGT	469	1002	CARSON	4	White,Georgia A.	IS			
MGT	469	1001	CARSON	0		IS			
MGT	462	1001	CARSON	1	White,Georgia A.	IS			

MKT	210	4001	WEB	32	Sawyer,Angela M	WB			
MKT	210	4002	WEB	0		WB			
MKT	210	8055	SLVRSPRNGS	0		P			
RE	101	4001	WEB	30	Brusseau,Kathey A.	WB			
RE	101	4002	WEB	0		WB			
RE	103	4001	WEB	11	Brusseau,Kathey A.	WB			
RE	103	4002	WEB	0		WB			

Enrollment Report Spring 2020

Subject	Catalog Number	Section	Location	Enrollment Total	Instructor Full Name	Instruction Mode	Start time	End time	Days
ACC	105	4001	WEB	0		WB			
ACC	201	1001	CARSON	18	Austin,Vivian L.	PI	11:00 am	12:15 pm	TUES, THURS
ACC	201	4001	WEB	24	Kloes,Richard O	WB			
ACC	202	1001	CARSON	0		RO			
ACC	223	4001	WEB	4	Akin, Lee S.	WB			
ACC	202	4001	WEB	22	Kloes,Richard O	WB			
ACC	290	4001	WEB	7	Kloes,Richard O	WB			
ACC	135	4001	WEB	16	Kloes,Richard O	WB			
ACC	202	3001	FALLON	0		SO			
ACC	201	1002	CARSON	8	Kloes,Richard O	RO	5:30 pm	6:45 pm	TUES, THURS
ACC	202	2001	DOUGLAS	0		RO			
ACC	204	4001	WEB	3	Kloes,Richard O	IO			
ACC	135	1001	CARSON	0		EN			
ACC	201	3001	FALLON	4	Kloes,Richard O	SO	5:30 pm	6:45 pm	TUES, THURS
BUS	273	4001	WEB	9	Russom,Tina M.	WB			
BUS	109	4001	WEB	20	Steverson,Anthony P.	WB			
BUS	101	1001	CARSON	15	Semas,Leonard A.	EN	5:30 pm	6:45 pm	MON, WED
BUS	101	4001	WEB	31	Sawyer,Angela M	WB			
BUS	107	4001	WEB	24	Lebaron-Smith,Jennifer Ayn	WB			
BUS	299	4001	WEB	6	Kloes,Richard O	WB			
BUS	108	1001	CARSON	0		EN			
BUS	110	1001	CARSON	0		EN			
BUS	101	2001	DOUGLAS	0		EN			
BUS	110	1041	CARSON	27	Ash,Robert J.	P	7:00 pm	8:15 pm	TUES, THURS
BUS	101	8055	SLVRSPRNGS	11	Seal,Michael	P			
BUS	101	8056	SLVRSPRNGS	4	Seal,Michael	P			
ECON	262	4001	WEB	26	Clifford, Penelope	WB			
ECON	102	4001	WEB	30	Bathgate,James	WB			
ECON	103	4001	WEB	18	Hanson,Nathaniel	WB			
ECON	100	4001	WEB	29	Sawyer,Angela M	WB			
ECON	102	4002	WEB	28	Bathgate,James	WB			
ECON	100	4051	WEB	30	Sawyer,Angela M	WB			
ECON	103	1001	CARSON	14	Hanson,Nathaniel	EN	4:00 pm	6:45 pm	MON
FIN	101	4001	WEB	27	Hanson,Nathaniel	WB			
FIN	101	3052	FALLON	22	Mayhorn,Ernest John	EN	9:00 am	12:15 pm	MON, TUES, WED, THURS, FRI
MGT	201	4001	WEB	10	Dodge,Darla J	WB			
MGT	283	4001	WEB	0		WB			
MGT	462	1001	CARSON	5	White,Georgia A.	IO			
MGT	235	4001	WEB	7	Sawyer,Angela M	WB			
MKT	210	4001	WEB	32	Lusk,Tiara	WB			
MKT	210	1001	CARSON	17	Scott,Margaret F.	EN	4:00 pm	6:45 pm	TUES
MKT	210	8055	SLVRSPRNGS	4	Seal,Michael	P			
RE	103	4001	WEB	13	Brusseau,Kathey A.	WB			
RE	101	4001	WEB	13	Brusseau,Kathey A.	WB			

Enrollment Report Summer 2020

Subject	Catalog Number	Section	Location	Enrollment Total	Instructor Full Name	Instruction Mode	Start time	End time	Days
ACC	135	TP2	CARSON	0		P			
ACC	180	4001	WEB	0		WB			
ACC	220	4001	WEB	0		WB			
BUS	107	4001	WEB	7	Kubistant,Thomas M	RV	5:00 pm	7:45 pm	TUES, THURS
BUS	101	TP2	CARSON	3		P			
BUS	101	4001	WEB	9	Whitcomb,Robert	WB			
BUS	110	TP2	CARSON	19		P			
ECON	100	4001	WEB	12	Sawyer,Angela M	WB			
ECON	102	4001	WEB	21	Bathgate,James	WB			
MGT	103	TP2	CARSON	3		P			
MGT	103	4001	WEB	4	Sawyer,Angela M	WB			
MKT	210	TP2	CARSON	3		P			

Enrollment Report Fall 2020

Subject	Catalog Number	Section	Location	Enrollment Total	Instructor Full Name	Instruction Mode	Start time	End time	Days
ACC	135	3001	FALLON	0		EN			
ACC	201	4001	WEB	38	Kloes,Richard O	WB			
ACC	135	4001	WEB	25	Anderson,Jordan Taylor	WB			
ACC	201	1001	CARSON	23	Austin,Vivian L.	EN	11:00 am	12:15 pm	TUES, THURS
ACC	201	1002	CARSON	0		EN			
ACC	202	1001	CARSON	12	Austin,Vivian L.	EN	5:30 pm	6:45 pm	TUES, THURS
ACC	223	4001	WEB	0		WB			
ACC	135	1001	CARSON	0		EN			
ACC	202	4001	WEB	19	Kloes,Richard O	WB			
ACC	203	4001	WEB	0		WB			
ACC	261	1001	CARSON	0		EN			
ACC	261	4001	WEB	6	Austin,Vivian L.	WB			
ACC	201	4002	WEB	17	Kloes,Richard O	WB			
BUS	101	4001	WEB	11	Whitcomb,Robert	WB			
BUS	101	1001	CARSON	20	Whitcomb,Robert	EN	9:30 am	10:45 am	MON, WED
BUS	107	4001	WEB	13	Semas,Leonard A.	WB			
BUS	108	4001	WEB	12	Sawyer,Angela M	WB			
BUS	101	1002	CARSON	0		EN			
BUS	109	4001	WEB	9	Steverson,Anthony P.	WB			
BUS	273	4001	WEB	6	Russom,Tina M.	WB			
BUS	101	4002	WEB	0		WB			
BUS	110	1001	CARSON	0		EN			
BUS	101	4003	WEB	14	Whitcomb,Robert	WB			
BUS	299	4001	WEB	0		IO			
BUS	101	1021	CARSON	10	Ash,Robert J.	P	7:00 pm	8:15 pm	TUES, THURS
BUS	101	8055	SLVRSPRNGS	4	Seal,Michael	P			
ECON	261	4001	WEB	29	Sawyer,Angela M	WB			
ECON	102	4001	WEB	32	Bathgate,James	WB			
ECON	100	1001	CARSON	7	Humpherys,Isaac	EN	5:30 pm	6:45 pm	TUES, THURS
ECON	102	1001	CARSON	23	Anderson,Jordan Taylor	EN	5:30 pm	8:15 pm	MON
ECON	103	4001	WEB	28	Bathgate,James	WB			
ECON	102	4002	WEB	28	Bathgate,James	WB			
ECON	102	1041	CARSON	15	Ash,Robert J.	P	5:30 pm	6:45 pm	MON
ECON	261	4002	WEB	16	Sawyer,Angela M	WB			
ECON	100	4001	WEB	0		WB			
ECON	262	4001	WEB	0		WB			
FIN	101	1001	CARSON	0		EN			
FIN	101	4001	WEB	22	Whitcomb,Robert	WB			
MGT	212	4001	WEB	0		WB			
MGT	323	4001	WEB	0		WB			
MGT	201	4001	WEB	19	Whitcomb,Robert	WB			
MGT	201	1041	CARSON	14	Ash,Robert J.	P	7:00 pm	8:15 pm	MON
MGT	485	4001	WEB	15	Lebaron-Smith,Jennifer Ayn	WB			
MGT	320	4001	WEB	19	White,Georgia A.	WB			
MGT	310	4001	WEB	19	Dodge,Darla J	WB			
MKT	210	4001	WEB	29	Whitcomb,Robert	WB			
MKT	210	1001	CARSON	10	Scott,Margaret F.	EN	11:00 am	12:15 pm	MON, WED
MKT	210	8055	SLVRSPRNGS	1	Seal,Michael	P			
RE	103	4001	WEB	7	Brusseau,Kathey A.	WB			
RE	101	4001	WEB	20	Brusseau,Kathey A.	WB			

Enrollment Report Spring 2021

Subject	Catalog Number	Section	Location	Enrollment Total	Instructor Full Name	Instruction Mode	Start time	End time	Days
ACC	202	4002	WEB	0		WB			
ACC	201	4001	WEB	40	Austin,Vivian L.	WB			
ACC	202	4001	WEB	22	Kloes,Richard O	WB			
ACC	290	4001	WEB	0		WB			
ACC	201	4002	WEB	29	Austin,Vivian L.	WB			
ACC	220	4001	WEB	0		WB			
BUS	273	4001	WEB	8	Russom,Tina M.	WB			
BUS	101	4001	WEB	34	Whitcomb,Robert	WB			
BUS	299	4001	WEB	10	Whitcomb,Robert	WB			
BUS	109	4001	WEB	17	Steverson,Anthony P.	WB			
BUS	101	1001	CARSON	0		EN			
BUS	101	8055	SLVRSPRNGS	0		P			
BUS	101	4002	WEB	25	Council,Jacob M.	WB			
BUS	107	1001	CARSON	9	Kubistant,Thomas M	EN	4:00 pm	6:45 pm	WED
BUS	108	1001	CARSON	5	Kubistant,Thomas M	EN	1:00 pm	3:45 pm	WED
BUS	108	1041	CARSON	10	Ash,Robert J.	P	5:30 pm	6:45 pm	TUES, THURS
BUS	108	1042	CARSON	8	Ash,Robert J.	P	5:30 pm	6:45 pm	MON, WED
ECON	262	4001	WEB	29	Sawyer,Angela M	WB			
ECON	102	4001	WEB	30	Bathgate,James	WB			
ECON	103	4001	WEB	38	Bathgate,James	WB			
ECON	100	4051	WEB	30	Sawyer,Angela M	HS			
ECON	103	1001	CARSON	0		EN			
ECON	100	4052	WEB	30	Sawyer,Angela M	HS			
ECON	103	4002	WEB	0		WB			
ECON	261	4001	WEB	20	Sawyer,Angela M	WB			
ECON	100	1055	WEB	25	Sawyer,Angela M	HS			
ECON	102	4002	WEB	25	Bathgate,James	WB			
FIN	101	3051	WEB	35	Mayhorn,Ernest John	RV	9:00 am	11:45 am	MON, TUES, WED, THURS, FRI
FIN	101	4001	WEB	28	Whitcomb,Robert	WB			
MGT	283	4001	WEB	0		WB			
MGT	201	4001	WEB	10	Whitcomb,Robert	WB			
MGT	462	4001	WEB	33	White,Georgia A.	WB			
MGT	391	4001	WEB	26	Bell,Patrick E	WB			
MGT	323	4001	WEB	27	Frohlich,Denise C	WB			
MGT	320	4001	WEB	2	White,Georgia A.	IO			
MKT	210	4001	WEB	26	Whitcomb,Robert	WB			
MKT	210	4002	WEB	30	Scott,Margaret F.	WB			
MKT	210	8055	SLVRSPRNGS	1	Seal,Michael	P			
RE	101	4001	WEB	27	Brusseau,Kathey A.	WB			
RE	103	4001	WEB	17	Brusseau,Kathey A.	WB			

Appendix Six
Business Program Majors in Program Requirements
By Gender and Minority Status
2015-2016 to 2019-2020 Combined

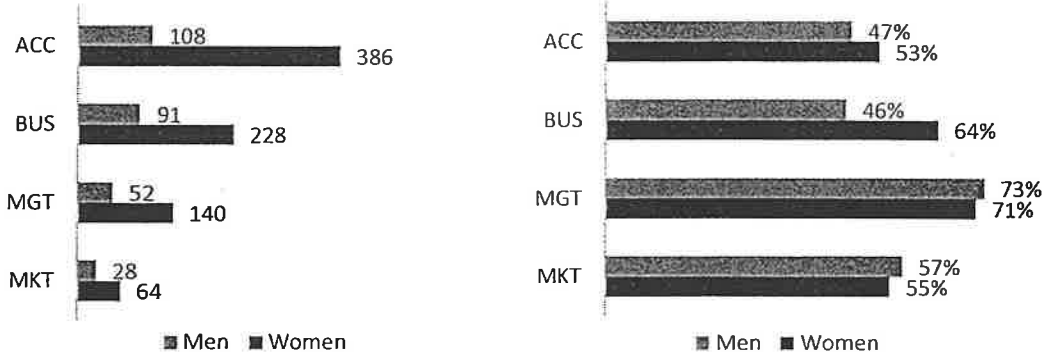
Program Majors in Program Requirements by Gender, 2015-16 to 2019-20 Combined

Point Difference
Men vs. Women
-6



Program Majors in Requirements by Gender and Subject

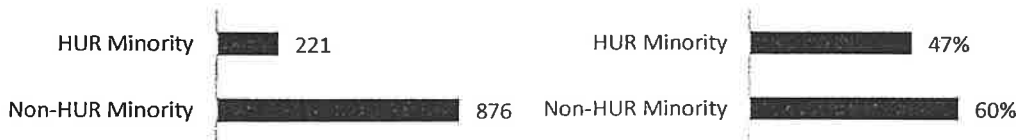
Men vs. Women



-5
-18
2
2

Program Majors in Program Requirements by Minority Status, 2015-16 to 2019-20 Combined

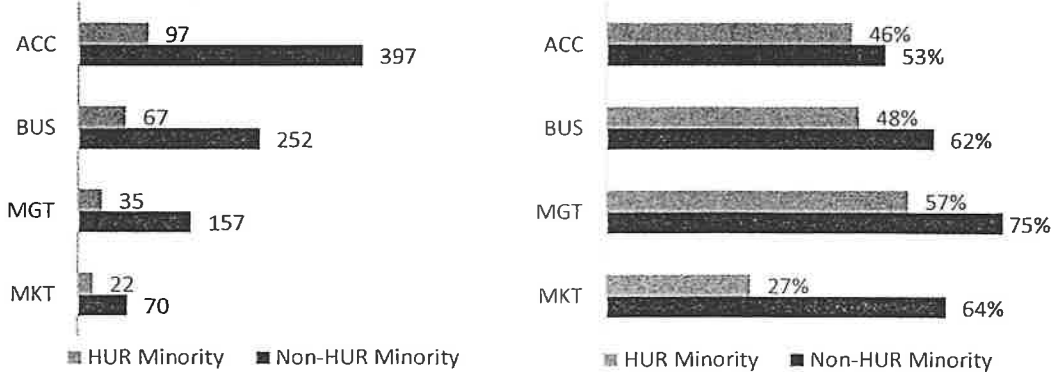
Point Difference
Non-HUR vs HUR
14



14

Program Majors in Requirements by Minority Status and Subject

Non-HUR vs HUR



6
14
18
37

Appendix Seven
Popularity of Business Degrees

Business has been the most popular undergraduate major since the early 1980s, according to the National Center for Education Statistics; an average of 346,706 bachelor's degrees in business were conferred from 2005 to 2015. In addition to their popularity, business degrees are also viewed as highly practical by most employers. Forbes places business administration and management fourth on a list of Top Degrees for Getting Hired in 2016.

During a four-year program, business administration students acquire foundational knowledge, skills and insights that are valued in nearly every career field. High salary potential is another reason why business administration bachelor's degrees are so popular. The average college graduate with a bachelor's in business makes about \$2.6 million over the course of a career, roughly \$200,000 more than the average for all workers with a bachelor's degree, according to data from the U.S. Census Bureau.

In recent years, business administration has also become a popular major choice for online bachelor's students. A 2016 survey from The Learning House found that business majors represented 26 percent of online undergraduate students, 10 points higher than the second-ranked major field, health and medicine.

Many colleges and universities allow students earning online business degrees to focus their studies in fields like accounting, human resources and marketing. Business degrees online are also a suitable alternative for students with jobs, child care duties and other responsibilities that may interfere with attending on-campus classes.

Online Coursework

Online business degree programs follow broad curricula that incorporate different areas of management and administration. Students take courses in business law and ethics, accounting and finance, marketing, office administration and human resources, as well as economics, philosophy, social sciences and mathematics. In addition, the virtual learning environment prepares students for the globally connected business markets found in today's corporate sector.

A large number of online business management degrees culminate in a capstone experience, which may take the form of a research project, a comprehensive portfolio or an internship course; the format of a capstone experience often depends on the student's specific major and concentration/minor.

Degree concentrations in online business degrees are fairly common, and most students may select from multiple concentration pathways.

Accounting is a popular business concentration for U.S. undergraduates. This universally applicable field revolves around financial calculations, reporting and compliance. Roughly 1.3 million accountants are employed nationwide, and jobs in the occupation are expected to grow by 11 percent in the coming years, the Bureau of Labor Statistics reports.

Marketing concentrations combine business, sociology, philosophy and public relations. Students in these pathways learn how to advertise, promote and sell products to different consumer demographics. Courses include market research and activity, product strategy and e-commerce.

Human resources refers to the administrative functions of an organization. HR personnel handle a wide range of tasks, including recruitment and screening of job candidates; new-employee orientations; compensation and benefits for everyone on the payroll; and conflict mediation of workplace disputes. Human resources concentrations cover the fundamentals of office administration, employee services, communication and management.

Supply chain management is a relatively new academic field that focuses on maximizing efficiency, reducing costs and streamlining operations for businesses and organizations. Students in this concentration take courses in fields like accounting and finance, economics, logistics and communication.

Some business administration concentrations are designed to prepare students for niche work environments. Information technology management, for instance, is aimed at students with career plans in the computing sector. Likewise, health services management focuses on leading clinics, hospitals and other health care facilities.

Salaries for business administration bachelor's degree graduates

The salary expectations are much more favorable for graduates with a bachelor's in business administration than those of students who complete their postsecondary education with an associate degree.

What can you do with an online business management degree?

Students who earn a business management degree online graduate qualified for a wide range of jobs across the public, private and nonprofit sectors – although individual suitability depends on the candidate's area of academic concentration. Four of the most popular career pathways for business administration bachelor's recipients are outlined below.

□ Advertising, promotions and marketing managers: These managers develop and coordinate programs designed to introduce, promote and ultimately sell various products and services. They often lead teams of marketing and creative professionals during product campaigns and also monitor and evaluate various steps of these to ensure launches are successful and well-publicized.

□ Human resources managers: HR managers lead the human resources divisions of their organizations. This title requires a comprehensive understanding of essential administrative functions, needs and challenges. In smaller companies, HR managers often play a direct role in recruitment, screening, hiring and providing orientation for job applicants. They may also coordinate training and development programs, assist with compensation and benefits, and mediate disputes between workers.

- Financial analysts: Financial analysts offer consultations about investments and money management; some analysts provide services to companies and organizations, while others work directly with individual clients. This career often involves long working hours; according to the BLS, one in three financial analysts works more than 40 hours per week.
- Accountants and auditors: Accountants are responsible for monitoring, evaluating and balancing the financial records of businesses, organizations and/or individual clients. Auditors are specialized accountants trained to spot errors and discrepancies in financial records. All accountants who work with the Securities and Exchange Commission are required to become certified public accountants, which typically includes additional undergraduate coursework.

Source: <https://www.usnews.com/education/online-education/business-administration-management-bachelors-degree>

Appendix Eight
WNC Students Enrolled by Course and Academic Year
2013-2014 through 2018-2019 (Fall, Spring, Summer)

WNC Students Enrolled by Course and Academic Year 2013-2014 through 2018-2019 (Fall, Spring, Summer)									
Subject	Catalog No	Title	2013-2014	2014-2015	2015-2016	2016-2017	2017-2018	2018-2019	Grand Total
ACC	105	Taxation for Individuals	15	36	26	9	14	7	107
ACC	135	Bookkeeping I	146	91	106	65	51	52	511
ACC	136	Bookkeeping II	0	0	0	0	0	0	0
ACC	180	Payroll/Empl Benefit Acct	18	18	11	14	5	6	72
ACC	201	Financial Accounting	185	176	171	159	143	167	1001
ACC	202	Managerial Accounting	101	85	90	67	71	62	476
ACC	203	Interm Accounting I	30	28	29	7	11	2	107
ACC	204	Interm Accounting II	3	8	12	0	2	3	28
ACC	220	Microcomputer Account	25	14	9	5	9	3	65
ACC	223	Intro to QuickBooks	55	54	33	24	23	16	205
ACC	251	Intro to Auditing	0	0	0	0	0	0	0
ACC	261	Governmental Accounting	10	8	13	9	12	0	52
ACC	290	Cert Bookkeeper Course	15	10	9	4	4	5	47
ACC	295	Work Experience I	0	0	0	0	0	1	1
ACC	299	Adv Spec Topics in Acctg	0	0	0	4	0	0	4
BUS	101	Intro to Business	193	222	197	159	159	180	1110
BUS	106	Business English	0	0	0	0	0	0	0
BUS	107	Business Speech Comm	113	58	47	35	25	40	318
BUS	108	Bus Letter & Reports	55	66	57	46	66	27	317
BUS	109	Business Mathematics	176	126	102	102	58	49	613
BUS	110	Human Relations for Empl	33	12	0	39	33	12	129
BUS	112	Customer Service	0	0	0	0	0	0	0
BUS	113	Work Attitude Development	0	0	0	0	0	0	0
BUS	114	Eff Listen First Impressn	0	0	0	0	0	0	0
BUS	115	Work Time Mgmt Goal Set	0	0	0	0	0	0	0
BUS	116	Eff Telephone Techniques	0	0	0	0	0	0	0
BUS	118	Resolving Cust Complaints	0	0	0	0	0	0	0
BUS	119	Decision Mkg Conflict Res	0	0	0	0	0	0	0
BUS	271	Intro to Employment Law	0	0	8	0	0	0	8
BUS	273	Business Law I	35	49	51	38	21	16	210
BUS	295	Work Experience I	4	0	1	0	0	0	5
BUS	299	Business Capstone	0	0	0	0	6	5	11
ECON	100	Introduction to Economics	17	14	30	30	78	76	245
ECON	102	Prin of Microeconomics	168	180	193	207	138	107	993
ECON	103	Prin of Macroeconomics	153	85	88	85	87	57	555

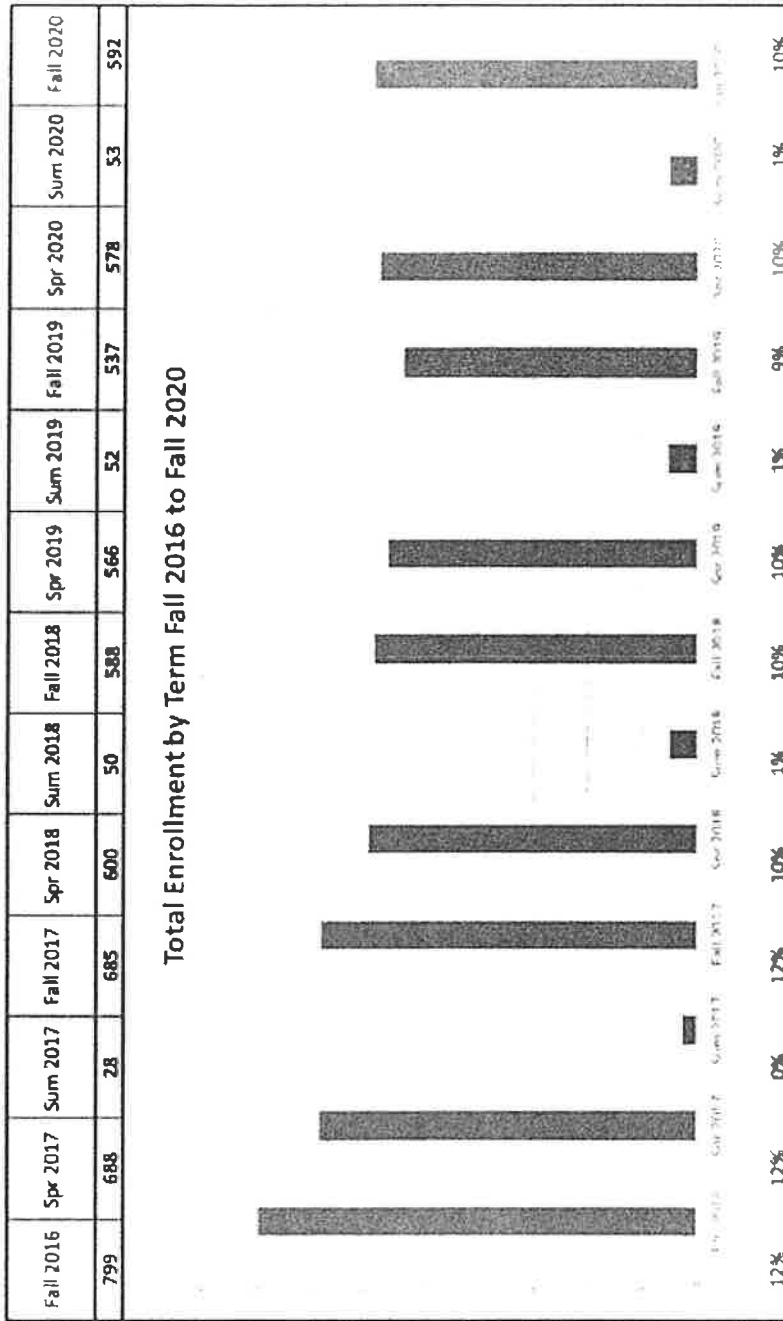
ECON	261	Prin of Statistics I	20	29	29	36	35	34	183
ECON	262	Prin of Statistics II	16	7	13	21	21	17	95
FIN	101	Personal Finance	137	136	98	95	55	75	596
FIN	115	Intro to Investments	14	0	0	0	6	0	20
MGT	103	Small Bus Management	92	37	42	27	14	16	228
MGT	201	Prin of Management	140	90	97	42	35	16	420
MGT	212	Leadership & Hum Rel	34	28	32	0	8	9	111
MGT	235	Organizational Behavior	8	0	48	17	4	0	77
MGT	283	Personnel Admin	27	37	28	2	6	10	110
MGT	295	Work Experience I	0	0	0	0	1	0	1
MGT	323	Organizational Behavior	8	4	0	6	0	7	25
MGT	367	Human Resource Mgt	4	0	6	0	9	3	22
MGT	462	Changing Environments	9	0	9	1	9	10	38
MGT	469	Managing Cultural Diversity	1	9	1	1	11	8	31
MKT	127	Intro to Retailing	16	0	17	13	4	0	50
MKT	210	Marketing Principles	186	121	75	83	68	71	604
MKT	262	Intro to Advertising	0	13	0	1	0	0	14
RE	101	Real Estate Prin I	59	60	35	44	34	43	275
RE	102	Real Estate Math	0	0	0	0	0	0	0
RE	103	Real Estate Prin II	23	36	25	26	15	18	143
RE	199	Real Estate Investments	0	0	0	0	0	0	0
RE	206	Real Est Appraising	0	0	0	0	0	0	0

Source WNC IRE page: https://intranet.wnc.edu/departments/ir_ir/data-trends.php

Appendix Nine
WNC Total Enrollment in Classes
Fall 2011 to Summer 2019
Highest Enrolled Classes

WNC Total Enrollment in Classes Fall 2011 to Summer 2019 Highest Enrolled Classes			
Rank	Course Number	Course Name	Enrollment
1	ACC 201	Financial Accounting	1398
2	ECON 102	Prin of Microeconomics	1273
3	BUS 109	Business Mathematics	874
4	FIN 101	Personal Finance	826
5	ACC 135	Bookkeeping I	816
6	MKT 210	Marketing Principles	769
7	ECON 103	Prin of Macroeconomics	724
8	ACC 202	Managerial Accounting	691
9	MGT 201	Prin of Management	628
10	BUS 107	Business Speech Comm	543
11	BUS 108	Bus Letter & Reports	533
12	RE 101	Real Estate Prin I	403
13	BUS 273	Business Law I	363
14	ACC 223	Intro to QuickBooks	324
15	BUS 110	Human Relations for Employment	316
16	MGT 103	Intro Small Business Mgt	315
17	ECON 100	Introduction to Economics	287
18	MGT 212	Leadership & Hum Rel	287
19	ECON 261	Prin of Statistics I	236
20	MGT 283	Intro/Hum Resources Mgt	204

Appendix Ten
WNC Total Enrollment in Business Classes
by location, Instruction Mode, Day of the Week and Time of Day
Fall 2016 through Fall 2020



UNCC Total Enrollment in Classes by Location, Instruction Mode, Day of the Week and Time of Day

Course	Prerequisites	Location	Mode	Day	Start Time	End Time	Time of Day	Length in Weeks	Days/Week	SP 2015	Fall 2015	SP 2017	Fall 2017	SP 2018	Fall 2018	SP 2019	Fall 2019	SP 2020	Fall 2020	SP 2021	Fall 2021	SP 2022	Fall 2022
ACC 101	Prerequisite: none	WEB	Online		0:00:00	0:00:00	Online	17	Online	0	0	0	0	0	0	0	0	0	0	0	0	0	0
ACC 101	Prerequisite: none	WEB	Online		0:00:00	0:00:00	Online	16	Online	0	0	0	0	0	0	0	0	0	0	0	0	0	0
ACC 101	Prerequisite: none	CARSON	IV	MW	16:00:00	17:15:00	Afternoon	16	2	0	0	0	0	0	0	0	0	0	0	0	0	0	0
ACC 101	Prerequisite: none	CARSON	In person	MW	11:00:00	12:15:00	Morning	16	3	10	0	0	0	0	0	0	0	0	0	0	0	0	0
ACC 101	Prerequisite: none	CARSON	In person	MW	17:30:00	18:45:00	Evening	17	2	0	0	0	0	0	0	0	0	0	0	0	0	0	0
ACC 101	Prerequisite: none	DOUGLAS	IV	MW	16:00:00	17:15:00	Afternoon	16	2	0	0	0	0	0	0	0	0	0	0	0	0	0	0
ACC 101	Prerequisite: none	FALLOW	IV	MW	16:00:00	17:15:00	Afternoon	16	2	5	0	0	0	0	0	0	0	0	0	0	0	0	0
ACC 101	Prerequisite: none	WEB	Online		0:00:00	0:00:00	Online	17	Online	0	0	0	0	0	0	0	0	0	0	0	0	0	0
ACC 101	Prerequisite: none	WEB	Online		0:00:00	0:00:00	Online	16	Online	12	0	0	0	0	0	0	0	0	0	0	0	0	0
ACC 101	Prerequisite: none	WEB	Online		0:00:00	0:00:00	Online	8	Online	0	0	0	0	0	0	0	0	0	0	0	0	0	0
ACC 101	Prerequisite: none	CARSON	IV	MW	17:30:00	18:45:00	Evening	16	2	0	0	0	0	0	0	0	0	0	0	0	0	0	0
ACC 101	Prerequisite: none	CARSON	IV	TT	17:30:00	18:45:00	Evening	17	2	0	0	0	0	0	0	0	0	0	0	0	0	0	0
ACC 101	Prerequisite: none	CARSON	In person	TT	11:00:00	12:15:00	Morning	16	2	24	0	0	0	0	0	0	0	0	0	0	0	0	0
ACC 101	Prerequisite: none	CARSON	In person	TT	11:00:00	12:15:00	Morning	17	2	0	0	0	0	0	0	0	0	0	0	0	0	0	0
ACC 101	Prerequisite: none	CARSON	In person	TT	17:30:00	18:45:00	Evening	17	2	0	0	0	0	0	0	0	0	0	0	0	0	0	0
ACC 101	Prerequisite: none	CARSON	In person	TT	17:30:00	18:45:00	Evening	16	2	0	0	0	0	0	0	0	0	0	0	0	0	0	0
ACC 101	Prerequisite: none	CARSON	Lecture	TT	17:30:00	18:45:00	Evening	16	2	15	0	0	0	0	0	0	0	0	0	0	0	0	0
ACC 101	Prerequisite: none	CARSON	Lecture	TT	17:30:00	18:45:00	Evening	17	2	0	0	0	0	0	0	0	0	0	0	0	0	0	0
ACC 101	Prerequisite: none	DOUGLAS	IV	MW	17:30:00	18:45:00	Evening	16	2	1	0	0	0	0	0	0	0	0	0	0	0	0	0
ACC 101	Prerequisite: none	FALLOW	IV	MW	17:30:00	18:45:00	Evening	16	2	7	0	0	0	0	0	0	0	0	0	0	0	0	0
ACC 101	Prerequisite: none	FALLOW	IV	TT	17:30:00	18:45:00	Evening	17	2	0	0	0	0	0	0	0	0	0	0	0	0	0	0
ACC 101	Prerequisite: none	WEB	Online		0:00:00	0:00:00	Online	17	Online	0	0	0	0	0	0	0	0	0	0	0	0	0	0
ACC 101	Prerequisite: none	WEB	Online		0:00:00	0:00:00	Online	16	Online	15	0	0	0	0	0	0	0	0	0	0	0	0	0
ACC 101	Prerequisite: none	CARSON	IV	MW	17:30:00	18:45:00	Evening	17	2	0	0	0	0	0	0	0	0	0	0	0	0	0	0

Course ID	Course Title	Days	Time	Start Date	End Date	Meeting	Days	Hours	Credits
BUS 101	Business Mathematics	MON	9:00-10:00	11/05/20	02/02/21	Monday	16	1	1
BUS 102	Business Mathematics	TUE	10:00-11:00	11/05/20	02/02/21	Tuesday	16	2	2
BUS 103	Business Mathematics	WED	11:00-12:00	11/05/20	02/02/21	Wednesday	17	1	1
BUS 104	Business Mathematics	THU	12:00-1:00	11/05/20	02/02/21	Thursday	16	2	2
BUS 105	Business Mathematics	FRI	1:00-2:00	11/05/20	02/02/21	Friday	17	1	1
BUS 106	Business Mathematics	SAT	8:00-10:00	11/05/20	02/02/21	Saturday	16	2	2
BUS 107	Business Mathematics	SUN	10:00-12:00	11/05/20	02/02/21	Sunday	16	1	1
BUS 108	Business Mathematics	MON	9:00-10:00	11/05/20	02/02/21	Monday	16	1	1
BUS 109	Business Mathematics	TUE	10:00-11:00	11/05/20	02/02/21	Tuesday	16	2	2
BUS 110	Business Mathematics	WED	11:00-12:00	11/05/20	02/02/21	Wednesday	16	1	1
BUS 111	Business Mathematics	THU	12:00-1:00	11/05/20	02/02/21	Thursday	16	2	2
BUS 112	Business Mathematics	FRI	1:00-2:00	11/05/20	02/02/21	Friday	16	1	1
BUS 113	Business Mathematics	SAT	8:00-10:00	11/05/20	02/02/21	Saturday	16	2	2
BUS 114	Business Mathematics	SUN	10:00-12:00	11/05/20	02/02/21	Sunday	16	1	1
BUS 115	Business Mathematics	MON	9:00-10:00	11/05/20	02/02/21	Monday	17	1	1
BUS 116	Business Mathematics	TUE	10:00-11:00	11/05/20	02/02/21	Tuesday	17	2	2
BUS 117	Business Mathematics	WED	11:00-12:00	11/05/20	02/02/21	Wednesday	17	1	1
BUS 118	Business Mathematics	THU	12:00-1:00	11/05/20	02/02/21	Thursday	17	2	2
BUS 119	Business Mathematics	FRI	1:00-2:00	11/05/20	02/02/21	Friday	17	1	1
BUS 120	Business Mathematics	SAT	8:00-10:00	11/05/20	02/02/21	Saturday	17	2	2
BUS 121	Business Mathematics	SUN	10:00-12:00	11/05/20	02/02/21	Sunday	17	1	1
BUS 122	Business Mathematics	MON	9:00-10:00	11/05/20	02/02/21	Monday	17	2	2
BUS 123	Business Mathematics	TUE	10:00-11:00	11/05/20	02/02/21	Tuesday	17	1	1
BUS 124	Business Mathematics	WED	11:00-12:00	11/05/20	02/02/21	Wednesday	17	2	2
BUS 125	Business Mathematics	THU	12:00-1:00	11/05/20	02/02/21	Thursday	17	1	1
BUS 126	Business Mathematics	FRI	1:00-2:00	11/05/20	02/02/21	Friday	17	2	2
BUS 127	Business Mathematics	SAT	8:00-10:00	11/05/20	02/02/21	Saturday	17	1	1
BUS 128	Business Mathematics	SUN	10:00-12:00	11/05/20	02/02/21	Sunday	17	2	2
ECN 100	Introduction to Economics	MON	9:00-10:00	11/05/20	02/02/21	Monday	16	2	2
ECN 100	Introduction to Economics	TUE	10:00-11:00	11/05/20	02/02/21	Tuesday	16	1	1

ECN	Section	Prerequisites	Course	In person	TTT	Start	End	Days	Week	18	19	20	21	22	23	24	25	26	27	28	29	30	31	
ECN 100	Introduction to Economics		CARSON	In person	TTT	08:00:00	10:45:00	Monday	18	1	0	0	0	0	0	0	0	0	0	0	0	0	0	0
ECN 100	Introduction to Economics		CARSON	In person	TTT	12:30:00	10:45:00	Tuesday	18	1	0	0	0	0	0	0	0	0	0	0	0	0	0	0
ECN 100	Introduction to Economics		WEB	Online		09:00:00	09:00:00	Online	17	Online	0	0	0	0	0	0	0	0	0	0	0	0	0	0
ECN 100	Introduction to Economics		WEB	Online		09:00:00	09:00:00	Online	8	Online	0	0	0	0	0	0	0	0	0	0	0	0	0	0
ECN 100	Introduction to Economics		WEB	Online		09:00:00	09:00:00	Online	3	Online	0	0	0	0	0	0	0	0	0	0	0	0	0	0
ECN 100	Introduction to Economics		WEB	Online		09:00:00	09:00:00	Online	16	Online	10	0	0	0	0	0	0	0	0	0	0	0	0	0
ECN 100	Introduction to Economics		CARSON	In person	M	16:00:00	18:45:00	Afternoon	17	1	0	0	0	0	0	0	0	0	0	0	0	0	0	0
ECN 100	Introduction to Economics		CARSON	In person	M	17:30:00	18:45:00	Evening	16	1	0	0	0	0	0	0	0	0	0	0	0	0	0	0
ECN 100	Introduction to Economics		CARSON	In person	M	17:30:00	20:15:00	Evening	16	1	0	0	0	0	0	0	0	0	0	0	0	0	0	0
ECN 100	Introduction to Economics		CARSON	In person	M	19:00:00	21:45:00	Evening	16	1	10	0	0	0	0	0	0	0	0	0	0	0	0	0
ECN 100	Introduction to Economics		CARSON	In person	T	16:00:00	18:45:00	Afternoon	17	1	0	0	0	0	0	0	0	0	0	0	0	0	0	0
ECN 100	Introduction to Economics		CARSON	In person	F	17:30:00	20:15:00	Evening	16	1	0	0	0	0	0	0	0	0	0	0	0	0	0	0
ECN 100	Introduction to Economics		CARSON	In person	T	19:00:00	21:45:00	Evening	16	1	0	0	0	0	0	0	0	0	0	0	0	0	0	0
ECN 100	Introduction to Economics		CARSON	In person	TTT	14:30:00	15:45:00	Afternoon	17	1	0	0	0	0	0	0	0	0	0	0	0	0	0	0
ECN 100	Introduction to Economics		UNIVERSITY	HY	Th	18:00:00	21:45:00	Evening	16	1	8	0	0	0	0	0	0	0	0	0	0	0	0	0
ECN 100	Introduction to Economics		UNIVERSITY	HY	Th	19:00:00	21:45:00	Evening	16	1	13	0	0	0	0	0	0	0	0	0	0	0	0	0
ECN 100	Introduction to Economics		WEB	Online		09:00:00	09:00:00	Online	17	Online	0	0	0	0	0	0	0	0	0	0	0	0	0	0
ECN 100	Introduction to Economics		WEB	Online		09:00:00	09:00:00	Online	1	Online	0	0	0	0	0	0	0	0	0	0	0	0	0	0
ECN 100	Introduction to Economics		WEB	Online		09:00:00	09:00:00	Online	16	Online	59	0	0	0	0	0	0	0	0	0	0	0	0	0
ECN 100	Introduction to Economics		CARSON	In person	M	16:00:00	18:45:00	Afternoon	17	1	0	0	0	0	0	0	0	0	0	0	0	0	0	0
ECN 100	Introduction to Economics		CARSON	In person	M	19:00:00	21:45:00	Evening	17	1	0	0	0	0	0	0	0	0	0	0	0	0	0	0
ECN 100	Introduction to Economics		CARSON	In person	TTT	14:30:00	15:45:00	Afternoon	16	2	7	0	0	0	0	0	0	0	0	0	0	0	0	0
ECN 100	Introduction to Economics		UNIVERSITY	In person		09:00:00	09:00:00	N/A	16	N/A	0	0	0	0	0	0	0	0	0	0	0	0	0	0
ECN 100	Introduction to Economics		WEB	Online		09:00:00	09:00:00	Online	17	Online	0	0	0	0	0	0	0	0	0	0	0	0	0	0
ECN 100	Introduction to Economics		WEB	Online		09:00:00	09:00:00	Online	15	Online	28	0	0	0	0	0	0	0	0	0	0	0	0	0
ECN 100	Introduction to Economics		CARSON	In person	M	19:00:00	21:45:00	Evening	16	1	0	0	0	0	0	0	0	0	0	0	0	0	0	0
ECN 100	Introduction to Economics		CARSON	In person	T	19:00:00	21:45:00	Evening	16	1	19	0	0	0	0	0	0	0	0	0	0	0	0	0

CO#	Prn of Natl Inst	WEB	Online	0:00:00	0:00:00	Online	16	Online	17	D	0	0	19	D	0	0	14	0	0	0	0	0	0	0	0	0	45	15
CO# 21	Prn of Natl Inst	CARSON	In person	19:00:00	21:45:00	Evening	17	1	0	0	0	0	0	0	0	0	0	0	0	0	0	0	0	0	0	0	0	0
CO# 22	Prn of Natl Inst	WEB	Online	0:00:00	0:00:00	Online	17	0	0	0	0	0	0	0	0	0	0	0	0	0	0	0	0	0	0	0	0	0
CO# 23	Prn of Natl Inst	FALCON	In person	0:00:00	11:15:00	Morning	3	5	0	0	0	0	0	0	0	0	0	0	0	0	0	0	0	0	0	0	0	0
CO# 24	Prn of Natl Inst	FALCON	In person	9:00:00	12:15:00	Morning	2	5	0	0	0	0	0	0	0	0	0	0	0	0	0	0	0	0	0	0	0	0
CO# 25	Prn of Natl Inst	WEB	Online	0:00:00	0:00:00	Online	8	0	0	0	0	0	0	0	0	0	0	0	0	0	0	0	0	0	0	0	0	0
CO# 26	Prn of Natl Inst	WEB	Online	0:00:00	0:00:00	Online	17	0	0	0	0	0	0	0	0	0	0	0	0	0	0	0	0	0	0	0	0	0
CO# 27	Prn of Natl Inst	WEB	Online	0:00:00	0:00:00	Online	16	0	0	0	0	0	0	0	0	0	0	0	0	0	0	0	0	0	0	0	0	0
CO# 28	Prn of Natl Inst	WEB	Online	0:00:00	0:00:00	Online	17	0	0	0	0	0	0	0	0	0	0	0	0	0	0	0	0	0	0	0	0	0
CO# 29	Prn of Natl Inst	CARSON	In person	19:00:00	21:45:00	Evening	16	1	4	0	0	0	0	0	0	0	0	0	0	0	0	0	0	0	0	0	0	0
CO# 30	Prn of Natl Inst	WEB	Online	0:00:00	0:00:00	Online	8	0	0	0	0	0	0	0	0	0	0	0	0	0	0	0	0	0	0	0	0	0
CO# 31	Prn of Natl Inst	WEB	Online	0:00:00	0:00:00	Online	16	0	0	0	0	0	0	0	0	0	0	0	0	0	0	0	0	0	0	0	0	0
CO# 32	Prn of Natl Inst	CARSON	In person	19:00:00	20:15:00	Evening	16	1	0	0	0	0	0	0	0	0	0	0	0	0	0	0	0	0	0	0	0	0
CO# 33	Prn of Natl Inst	CARSON	In person	17:30:00	18:45:00	Evening	17	2	0	0	0	0	0	0	0	0	0	0	0	0	0	0	0	0	0	0	0	0
CO# 34	Prn of Natl Inst	WEB	Online	0:00:00	0:00:00	Online	8	0	0	0	0	0	0	0	0	0	0	0	0	0	0	0	0	0	0	0	0	0
CO# 35	Prn of Natl Inst	WEB	Online	0:00:00	0:00:00	Online	17	0	0	0	0	0	0	0	0	0	0	0	0	0	0	0	0	0	0	0	0	0
CO# 36	Prn of Natl Inst	WEB	Online	0:00:00	0:00:00	Online	16	0	0	0	0	0	0	0	0	0	0	0	0	0	0	0	0	0	0	0	0	0
CO# 37	Leadership & Hum Rel	WEB	Online	0:00:00	0:00:00	Online	16	0	0	0	0	0	0	0	0	0	0	0	0	0	0	0	0	0	0	0	0	0
CO# 38	Organizational Behavior	WEB	Online	0:00:00	0:00:00	Online	17	0	0	0	0	0	0	0	0	0	0	0	0	0	0	0	0	0	0	0	0	0
CO# 39	Human Resource Mgt	CARSON	In person	0:00:00	0:00:00	N/A	16	N/A	2	0	0	0	0	0	0	0	0	0	0	0	0	0	0	0	0	0	0	0
CO# 40	Human Resource Mgt	WEB	Online	0:00:00	0:00:00	Online	17	0	0	0	0	0	0	0	0	0	0	0	0	0	0	0	0	0	0	0	0	0
CO# 41	Human Resource Mgt	WEB	Online	0:00:00	0:00:00	Online	16	0	0	0	0	0	0	0	0	0	0	0	0	0	0	0	0	0	0	0	0	0
CO# 42	Human Resource Mgt	WEB	Online	0:00:00	0:00:00	Online	16	0	0	0	0	0	0	0	0	0	0	0	0	0	0	0	0	0	0	0	0	0
CO# 43	Human Resource Mgt	WEB	Online	0:00:00	0:00:00	Online	16	0	0	0	0	0	0	0	0	0	0	0	0	0	0	0	0	0	0	0	0	0
CO# 44	Human Resource Mgt	WEB	Online	0:00:00	0:00:00	Online	16	0	0	0	0	0	0	0	0	0	0	0	0	0	0	0	0	0	0	0	0	0
CO# 45	Human Resource Mgt	WEB	Online	0:00:00	0:00:00	Online	16	0	0	0	0	0	0	0	0	0	0	0	0	0	0	0	0	0	0	0	0	0
CO# 46	Human Resource Mgt	WEB	Online	0:00:00	0:00:00	Online	16	0	0	0	0	0	0	0	0	0	0	0	0	0	0	0	0	0	0	0	0	0
CO# 47	Human Resource Mgt	WEB	Online	0:00:00	0:00:00	Online	16	0	0	0	0	0	0	0	0	0	0	0	0	0	0	0	0	0	0	0	0	0
CO# 48	Human Resource Mgt	WEB	Online	0:00:00	0:00:00	Online	16	0	0	0	0	0	0	0	0	0	0	0	0	0	0	0	0	0	0	0	0	0
CO# 49	Human Resource Mgt	WEB	Online	0:00:00	0:00:00	Online	16	0	0	0	0	0	0	0	0	0	0	0	0	0	0	0	0	0	0	0	0	0
CO# 50	Human Resource Mgt	WEB	Online	0:00:00	0:00:00	Online	16	0	0	0	0	0	0	0	0	0	0	0	0	0	0	0	0	0	0	0	0	0

Code	Title	Unit	Mode	Prerequisites	Days	Time	Credits	2	3	4	5	6	7	8	9	10	11	12	
MG1 167	Human Resource Mgt	WEB	Online			09:00-10:00	Online	2											4
MG1 168	Human Resource Mgt	WEB	Online			09:00-10:00	Online	2											
MG1 169	Human Resource Mgt	WEB	Online			09:00-10:00	Online	17											
MG1 170	Human Resource Mgt	WEB	Online			09:00-10:00	Online	16											
MG1 442	Managing Investments	CARSON	In person			09:00-10:00	N/A												4
MG1 443	Managing Investments	CARSON	In person			09:00-10:00	N/A												4
MG1 444	Managing Investments	CARSON	In person			09:00-10:00	N/A												4
MG1 445	Managing Investments	CARSON	In person			09:00-10:00	N/A												4
MG1 446	Managing Investments	CARSON	In person			09:00-10:00	Online	17											4
MG1 447	Managing Investments	CARSON	Online			09:00-10:00	Online	7											4
MG1 448	Managing Investments	WEB	Online			09:00-10:00	Online	8											4
MG1 449	Managing Investments	WEB	Online			09:00-10:00	Online	17											4
MG1 450	Managing Investments	WEB	Online			09:00-10:00	Online	17											4
MG1 451	Managing Investments	WEB	Online			09:00-10:00	Online	8											4
MG1 452	Managing Investments	WEB	Online			09:00-10:00	Online	8											4
MG1 167	Human Resource Mgt	WEB	Online			09:00-10:00	Online	2											4
MG1 168	Human Resource Mgt	WEB	Online			09:00-10:00	Online	2											4
MG1 169	Human Resource Mgt	WEB	Online			09:00-10:00	Online	17											4
MG1 170	Human Resource Mgt	WEB	Online			09:00-10:00	Online	16											4
MG1 442	Managing Investments	CARSON	In person			09:00-10:00	N/A												4
MG1 443	Managing Investments	CARSON	In person			09:00-10:00	N/A												4
MG1 444	Managing Investments	CARSON	In person			09:00-10:00	N/A												4
MG1 445	Managing Investments	CARSON	In person			09:00-10:00	N/A												4
MG1 446	Managing Investments	CARSON	In person			09:00-10:00	Online	17											4
MG1 447	Managing Investments	CARSON	Online			09:00-10:00	Online	7											4
MG1 448	Managing Investments	WEB	Online			09:00-10:00	Online	8											4
MG1 449	Managing Investments	WEB	Online			09:00-10:00	Online	17											4
MG1 450	Managing Investments	WEB	Online			09:00-10:00	Online	17											4
MG1 451	Managing Investments	WEB	Online			09:00-10:00	Online	8											4
MG1 452	Managing Investments	WEB	Online			09:00-10:00	Online	8											4
MG1 167	Human Resource Mgt	WEB	Online			09:00-10:00	Online	2											4
MG1 168	Human Resource Mgt	WEB	Online			09:00-10:00	Online	2											4
MG1 169	Human Resource Mgt	WEB	Online			09:00-10:00	Online	17											4
MG1 170	Human Resource Mgt	WEB	Online			09:00-10:00	Online	16											4
MG1 442	Managing Investments	CARSON	In person			09:00-10:00	N/A												4
MG1 443	Managing Investments	CARSON	In person			09:00-10:00	N/A												4
MG1 444	Managing Investments	CARSON	In person			09:00-10:00	N/A												4
MG1 445	Managing Investments	CARSON	In person			09:00-10:00	N/A												4
MG1 446	Managing Investments	CARSON	In person			09:00-10:00	Online	17											4
MG1 447	Managing Investments	CARSON	Online			09:00-10:00	Online	7											4
MG1 448	Managing Investments	WEB	Online			09:00-10:00	Online	8											4
MG1 449	Managing Investments	WEB	Online			09:00-10:00	Online	17											4
MG1 450	Managing Investments	WEB	Online			09:00-10:00	Online	17											4
MG1 451	Managing Investments	WEB	Online			09:00-10:00	Online	8											4
MG1 452	Managing Investments	WEB	Online			09:00-10:00	Online	8											4

Code	Description	W/B	Cr/Gr	000000	000000	000000	000000	000000	000000	000000	000000	000000	000000	000000	000000	000000	000000	000000	000000	000000
MCY 210	Marketing Principles	W/B	Cr/Gr		000000	000000	000000	000000	000000	000000	000000	000000	000000	000000	000000	000000	000000	000000	000000	000000
MCY 210	Marketing Principles	W/B	Cr/Gr		000000	000000	000000	000000	000000	000000	000000	000000	000000	000000	000000	000000	000000	000000	000000	000000
MCY 262	Mktg Advertising	CALSON	Cr/Gr		000000	000000	000000	000000	000000	000000	000000	000000	000000	000000	000000	000000	000000	000000	000000	000000
PL 101	Principles of Bus. Adm.	W/B	Cr/Gr		000000	000000	000000	000000	000000	000000	000000	000000	000000	000000	000000	000000	000000	000000	000000	000000
PL 101	Principles of Bus. Adm.	W/B	Cr/Gr		000000	000000	000000	000000	000000	000000	000000	000000	000000	000000	000000	000000	000000	000000	000000	000000
PL 101	Principles of Bus. Adm.	W/B	Cr/Gr		000000	000000	000000	000000	000000	000000	000000	000000	000000	000000	000000	000000	000000	000000	000000	000000
PL 101	Principles of Bus. Adm.	W/B	Cr/Gr		000000	000000	000000	000000	000000	000000	000000	000000	000000	000000	000000	000000	000000	000000	000000	000000