



University &
Community
College System
of Nevada

January 2004

UCCSN

Enrollment Planning

Information to support the preparation
of the 2005-07 biennial budget

Presentation to the UCCSN Board of Regents –
Budget & Finance Committee



Presentation Objective

Provide information to support decision making in the preparation of the 2005-07 biennial budget

- UCCSN Enrollment History
- Enrollment Plans (2003-04 thru 2012-13)
- Population Trends & Demographics





UCCSN Enrollment History



Headcount Enrollment

Headcount Enrollment:

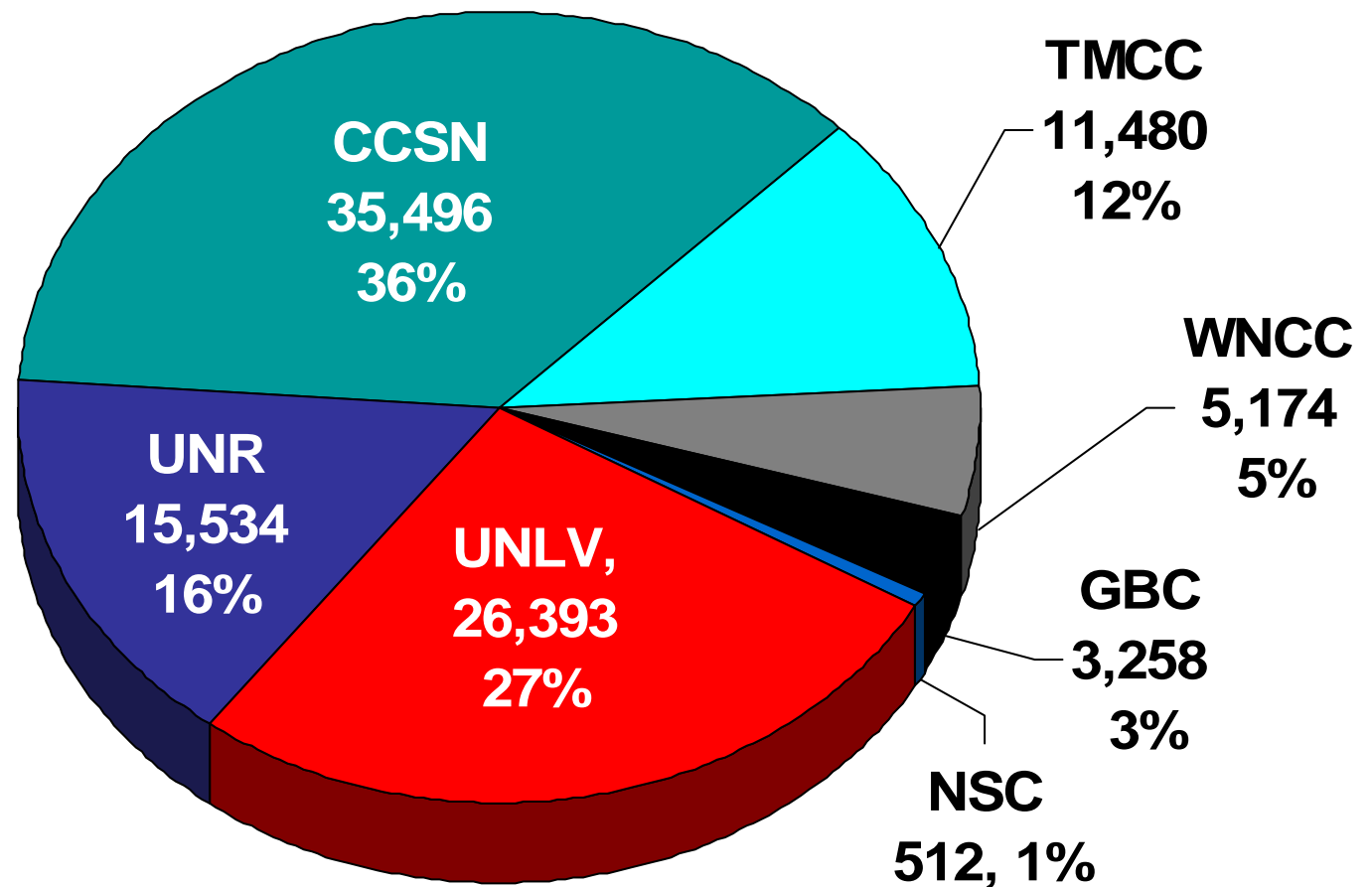
students enrolled in at least one credit course

Comm. Colleges comprised 56% of all headcount enrollment in Fall 2003

In Fall 1994, Comm. Colleges made up 50% of all headcount enrollment

Student Headcount Distribution

Fall 2003

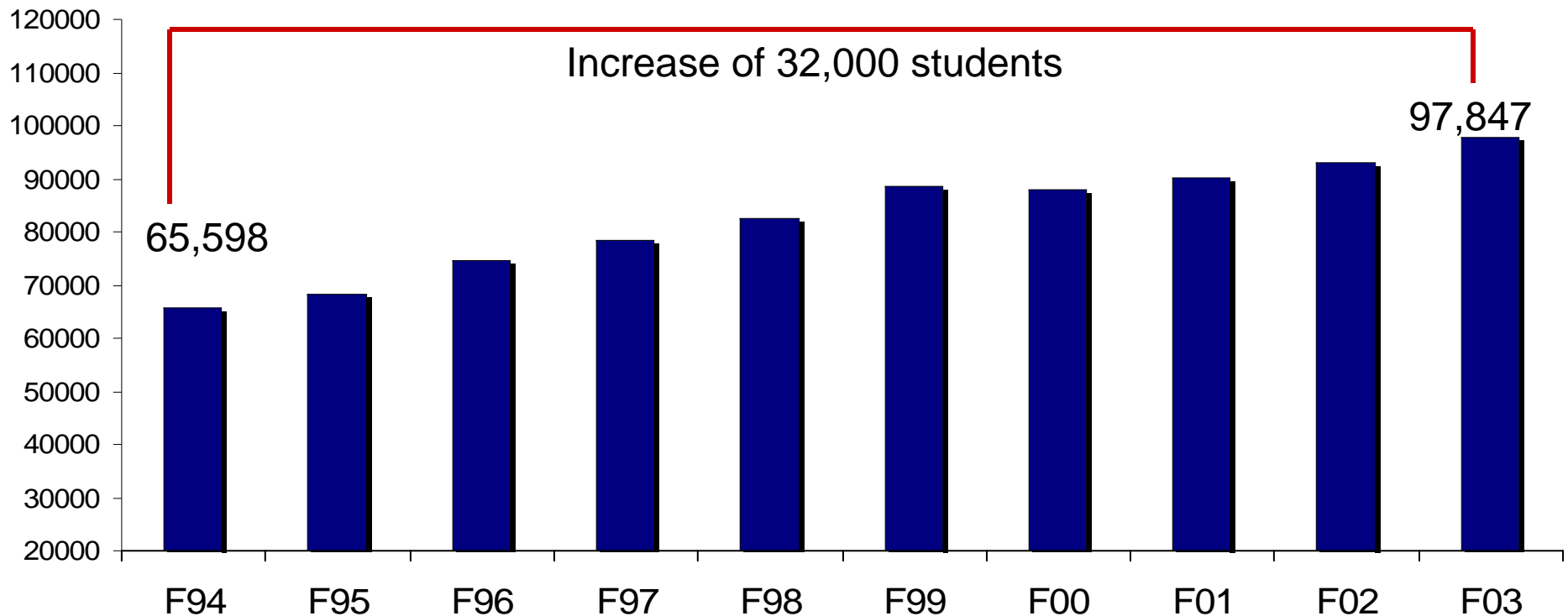




Enrollment History

Headcount enrollment increased by 5.1% over last Fall and 49% since Fall 1994

UCCSN Headcount Enrollment (Fall 1994 through Fall 2003)

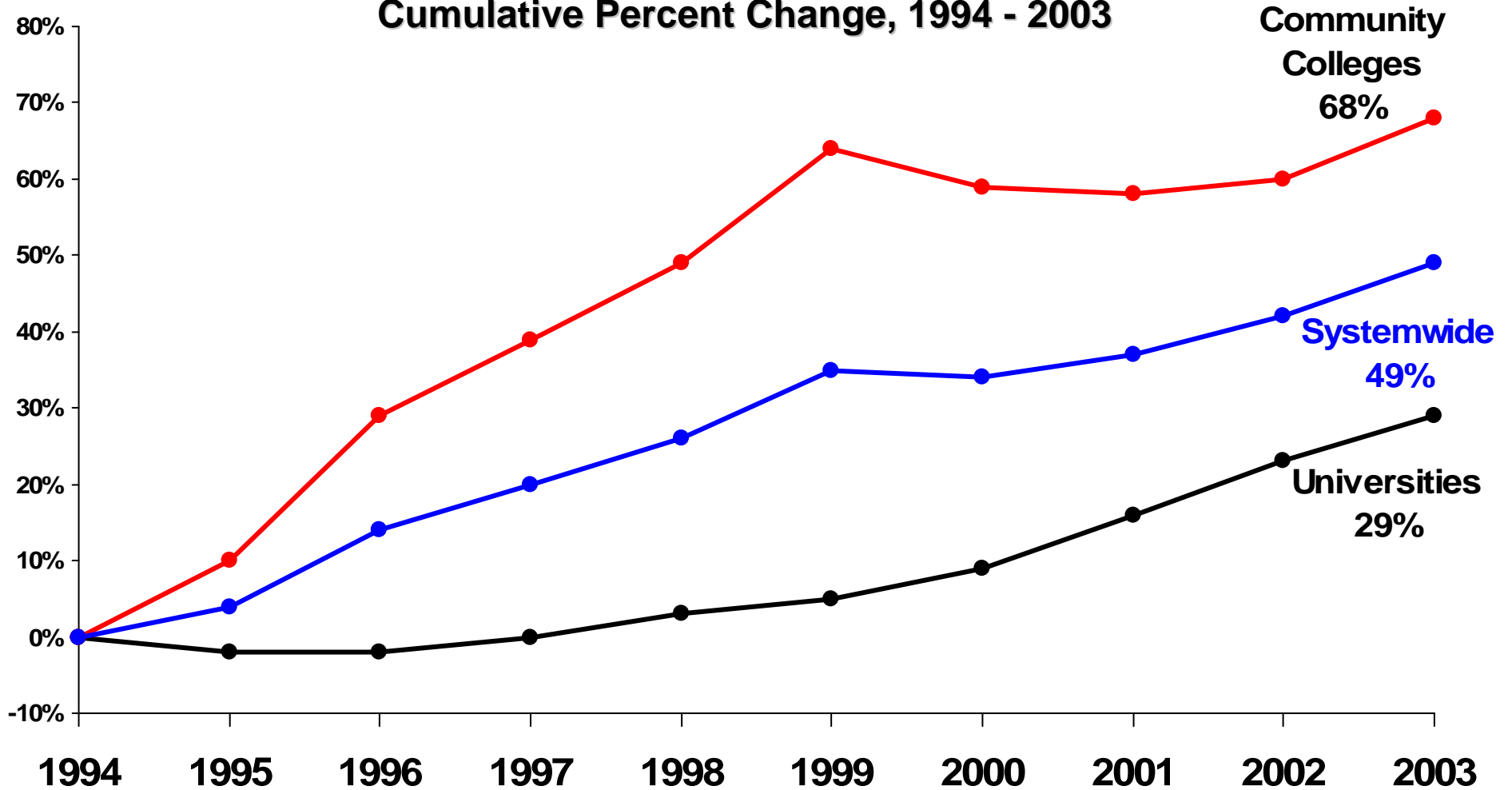


Source: UCCSN Official Enrollment Report



Enrollment History

Fall Headcount by Institution Type Cumulative Percent Change, 1994 - 2003

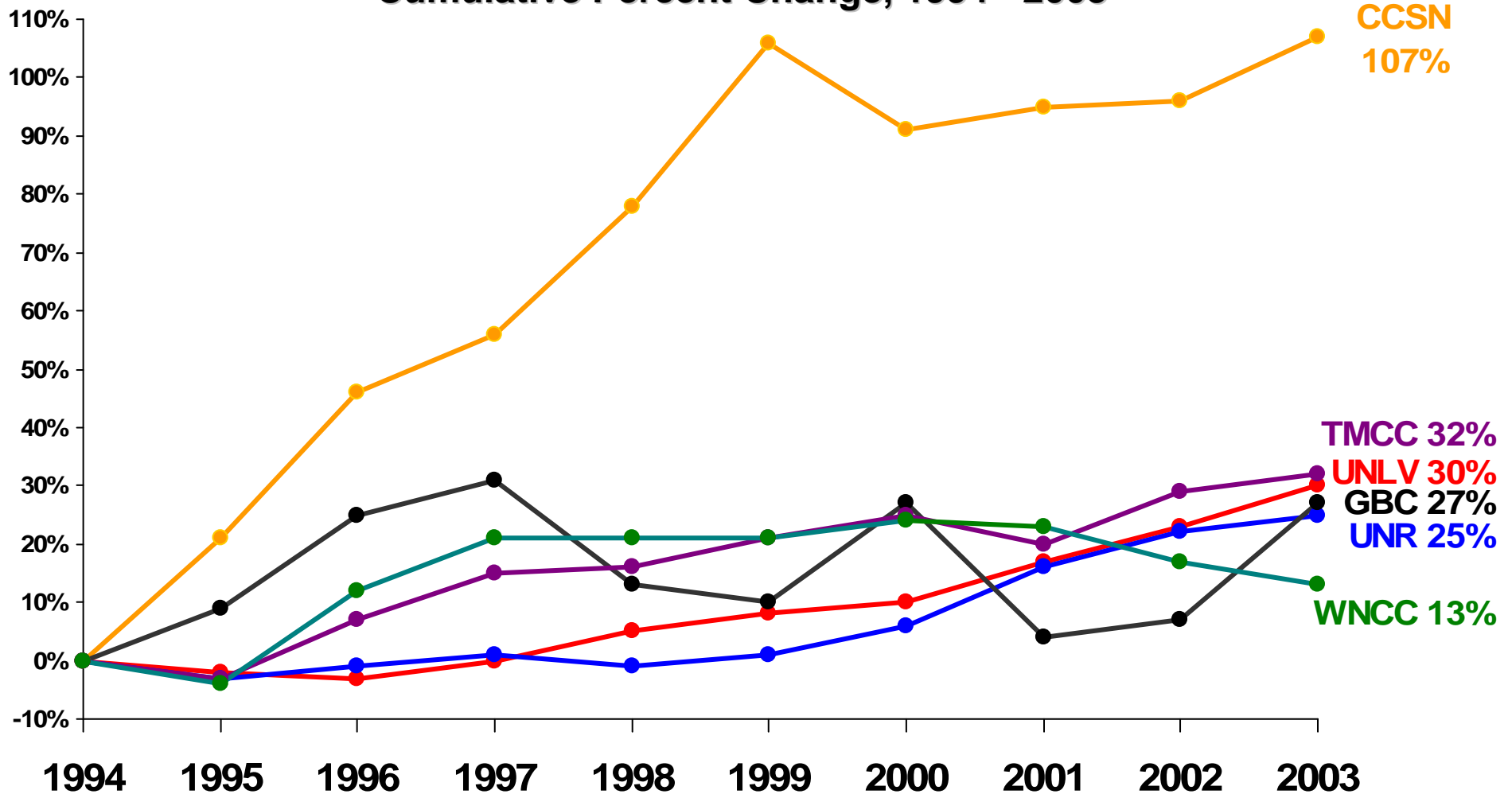


Source: UCCSN Official Enrollment Report; Fall 2003 is preliminary headcount



Enrollment History

Fall Headcount by Institution Cumulative Percent Change, 1994 - 2003



Source: UCCSN Official Enrollment Report; Fall 2003 is preliminary headcount



Enrollment Plans

Headcount Enrollment by Institution 1994 - 2003

FALL TERM	UNLV	UNR	CCSN	GBC	TMCC	WNCC	NSC	TOTAL
1994	20,239	12,379	17,113	2,565	8,707	4,595		65,598
1995	19,769	12,047	20,741	2,805	8,458	4,410		68,230
1996	19,683	12,279	25,012	3,200	9,338	5,143		74,655
1997	20,272	12,442	26,707	3,372	10,051	5,563		78,407
1998	21,312	12,303	30,440	2,900	10,139	5,572		82,666
1999	21,853	12,532	35,297	2,822	10,539	5,574		88,617
2000	22,342	13,149	32,639	3,251	10,878	5,682		87,941
2001	23,618	14,316	33,364	2,680	10,445	5,657		90,080
2002	24,965	15,093	33,481	2,733	11,250	5,369	177	93,068
2003*	26,393	15,534	35,496	3,258	11,480	5,174	512	97,847

*Fall 2003 represents a preliminary headcount



Full-time Equivalent Enrollment

Full-time Equivalent (FTE):

Measure of student workload

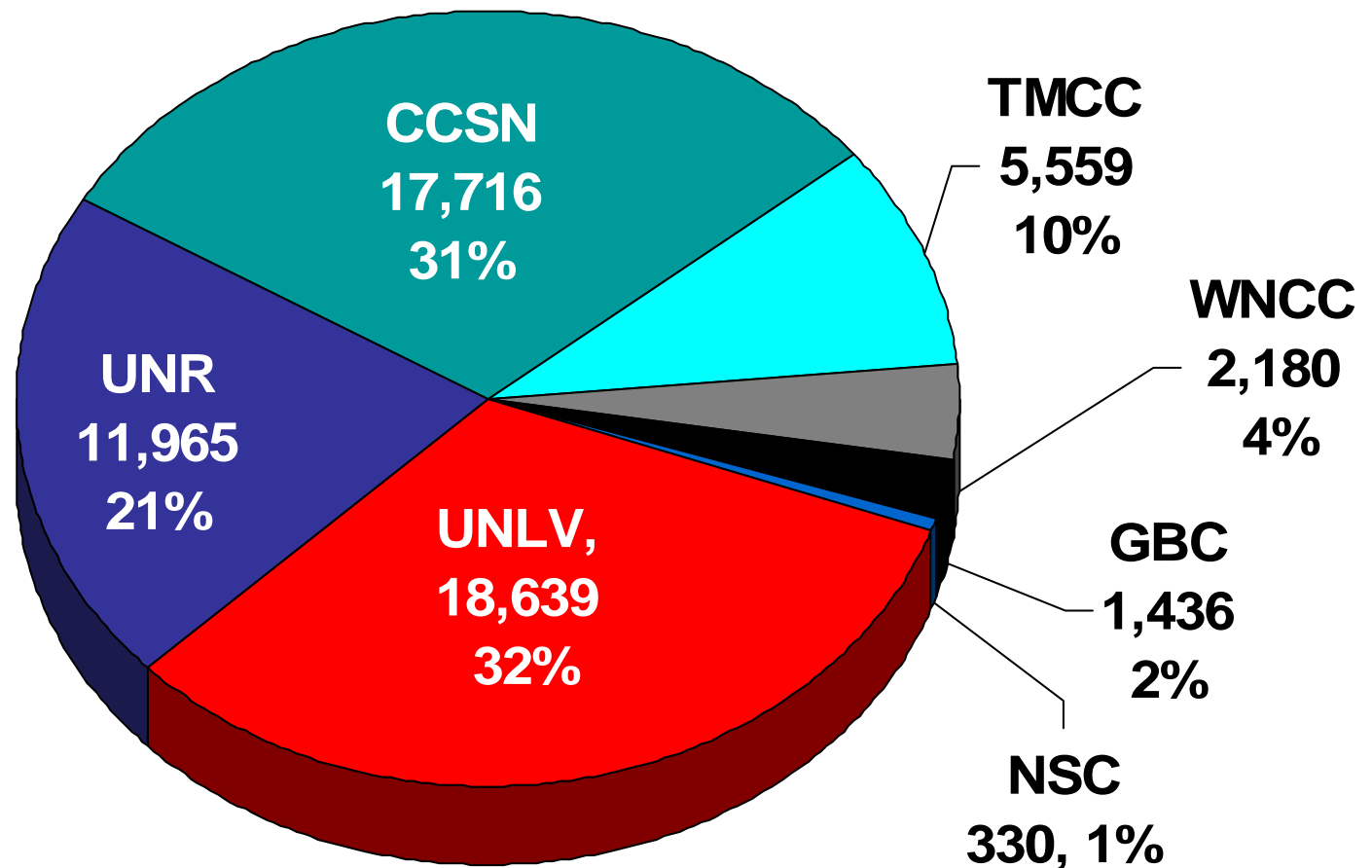
One undergrad FTE is equal to student enrollment in 15 academic credit hours per semester

Univ's make up 53% of system FTE in Fall 2003

Univ's comprised 62% of systemwide FTE in 1994-95

Student FTE Distribution

Fall 2003

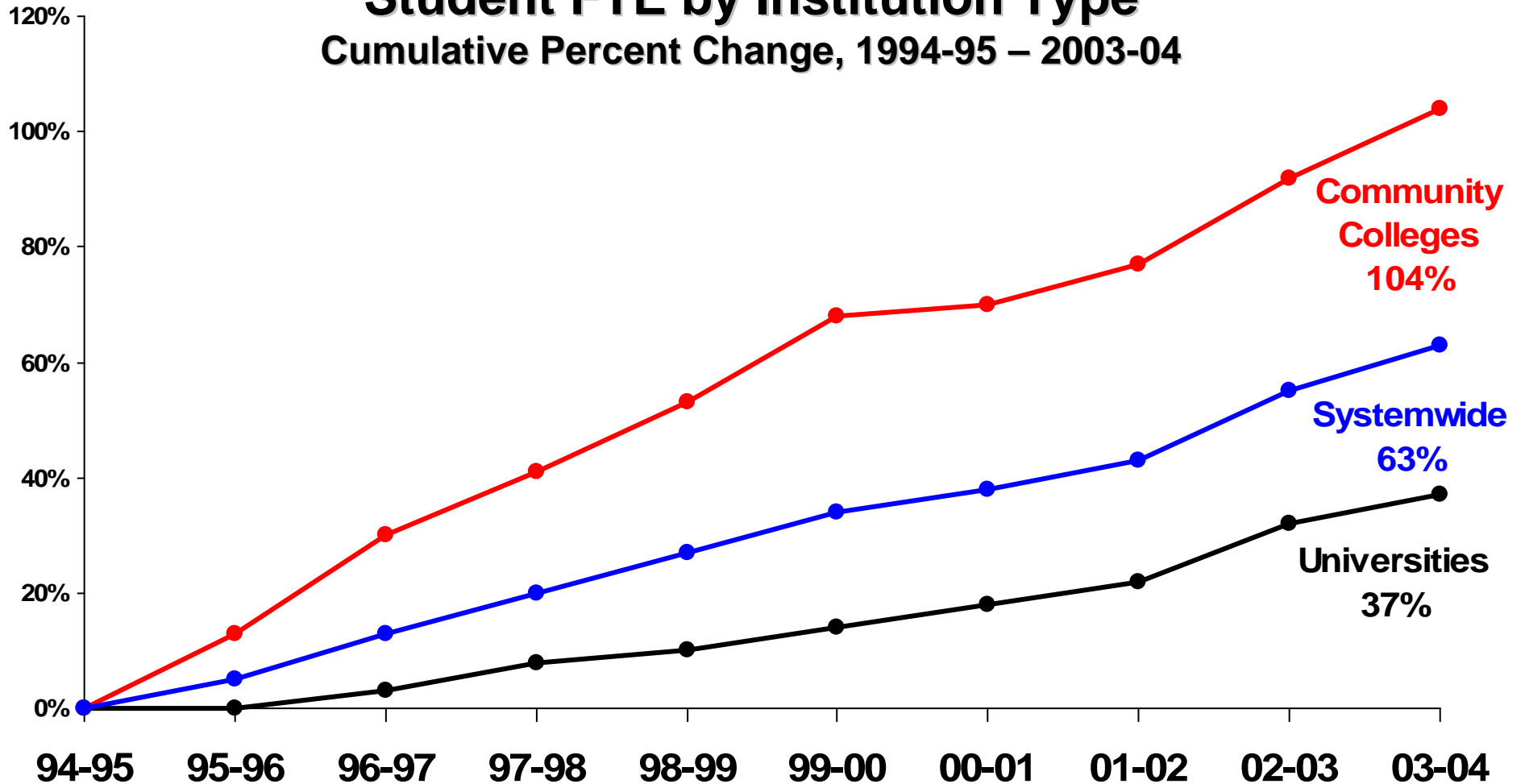




Enrollment History

Student FTE by Institution Type

Cumulative Percent Change, 1994-95 – 2003-04



Note: In Fall 2001, the method for calculating graduate level FTE was changed, as a result FTE at the universities from Fall 2001 and later is not compatible with earlier years.

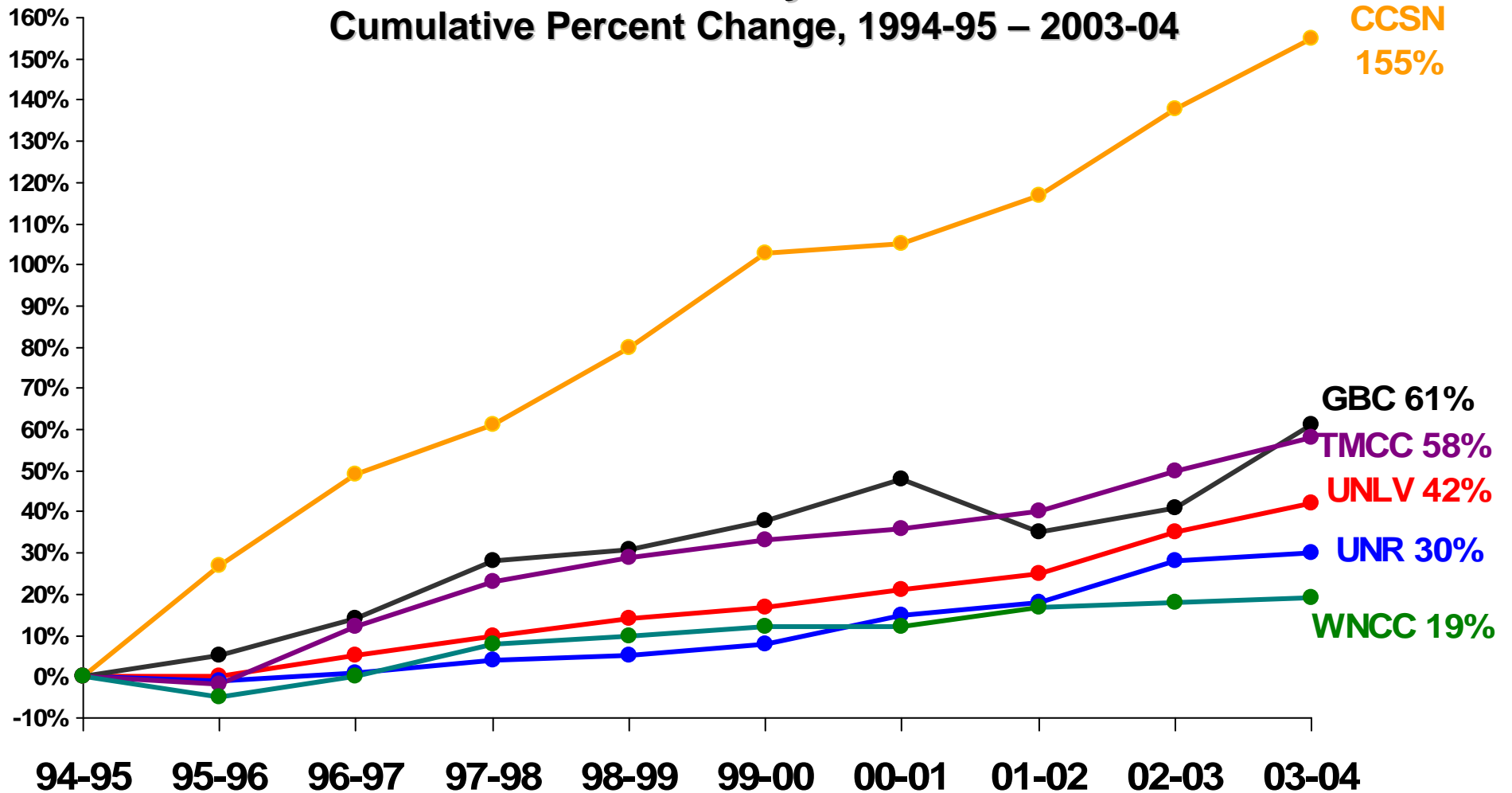
Source: UCCSN Official Enrollment Report; 2003-04 is projected



Enrollment History

Student FTE by Institution

Cumulative Percent Change, 1994-95 – 2003-04



Note: In Fall 2001, the method for calculating graduate level FTE was changed, as a result FTE at the universities from Fall 2001 and later is not compatible with earlier years.

Source: UCCSN Official Enrollment Report; 2003-04 is projected



Enrollment Plans

Student FTE by Institution 1994-95 – 2003-04

YEAR	UNLV	UNR	CCSN	GBC	TMCC	WNCC	NSC	TOTAL
1994-95	12,823	8,857	6,998	894	3,498	1,833		34,903
1995-96	12,851	8,757	8,857	939	3,434	1,746		36,584
1996-97	13,439	8,973	10,424	1,015	3,908	1,842		39,601
1997-98	14,162	9,183	11,256	1,143	4,287	1,982		42,013
1998-99	14,630	9,277	12,597	1,167	4,516	2,012		44,199
1999-00	15,055	9,581	14,222	1,236	4,654	2,061		46,809
2000-01	15,473	10,172	14,315	1,321	4,766	2,060		48,107
2001-02	16,046	10,449	15,208	1,203	4,898	2,149		49,953
2002-03	17,267	11,295	16,647	1,263	5,259	2,160	146	54,037
2003-04*	18,145	11,532	17,812	1,437	5,522	2,180	345	56,973

*2003-04 is projected FTE based on Fall 2003 preliminary enrollment

Note: In Fall 2001, the method for calculating graduate level FTE was changed, as a result FTE at the universities from Fall 2001 and later is not compatible with earlier years.

Source: UCCSN Official Enrollment Report, 2003-04 is projected



Enrollment Plans



Enrollment Plans

- **Development of Enrollment Plans**
 - Each biennium institutions provide 10-year enrollment plans
 - Institutions are asked to provide visionary, practical and attainable plans
 - Also asked to consider the following factors
 - actual and projected rates of Nevada high school graduates
 - population growth in local service areas
 - historical and projected participation rates

- **Uses of Enrollment Plans**
 - driver in space needs calculations
 - supporting information in development of capital appropriations
 - method for developing systemwide 10-yr projections

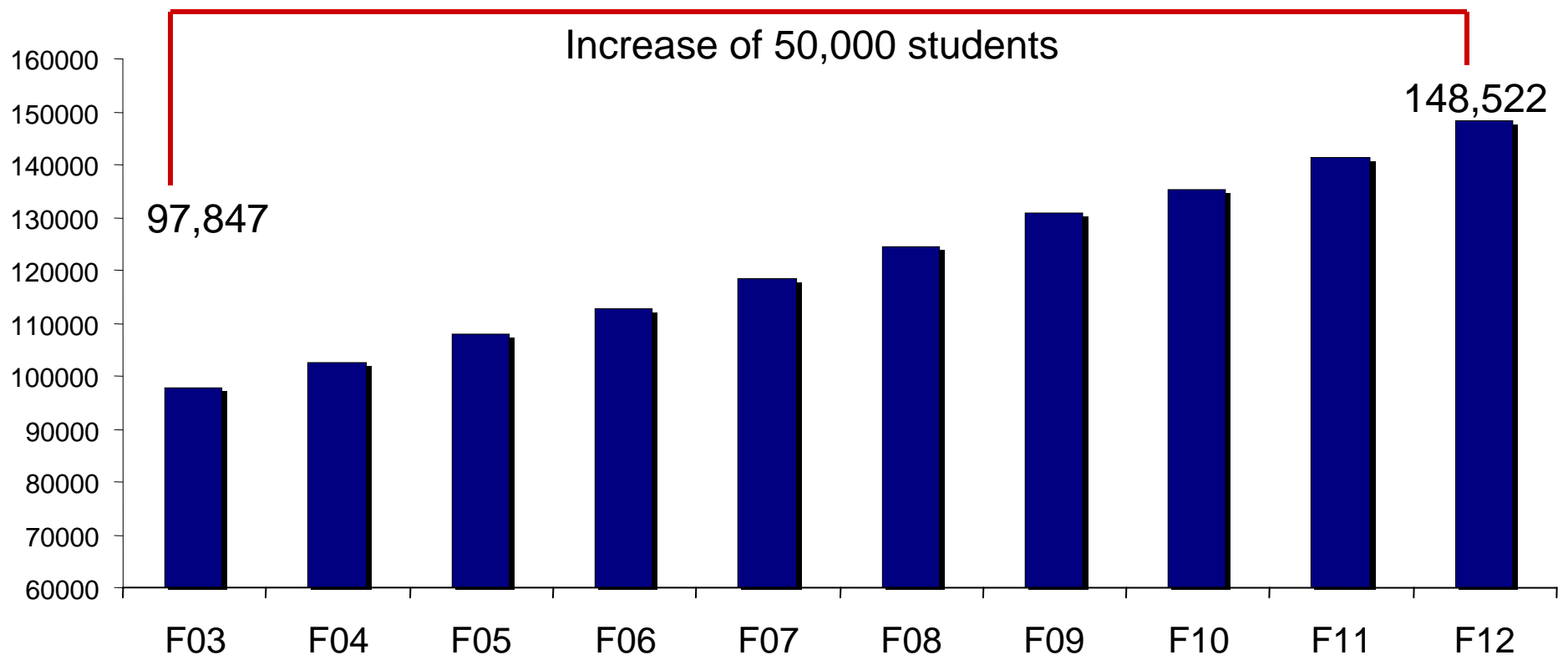


Projected Enrollment

Systemwide headcount enrollment is projected to increase by 52% in the next ten years (aggregation of enrollment plans).

Projected UCCSN Headcount Enrollment

(Fall 2003 through Fall 2012)

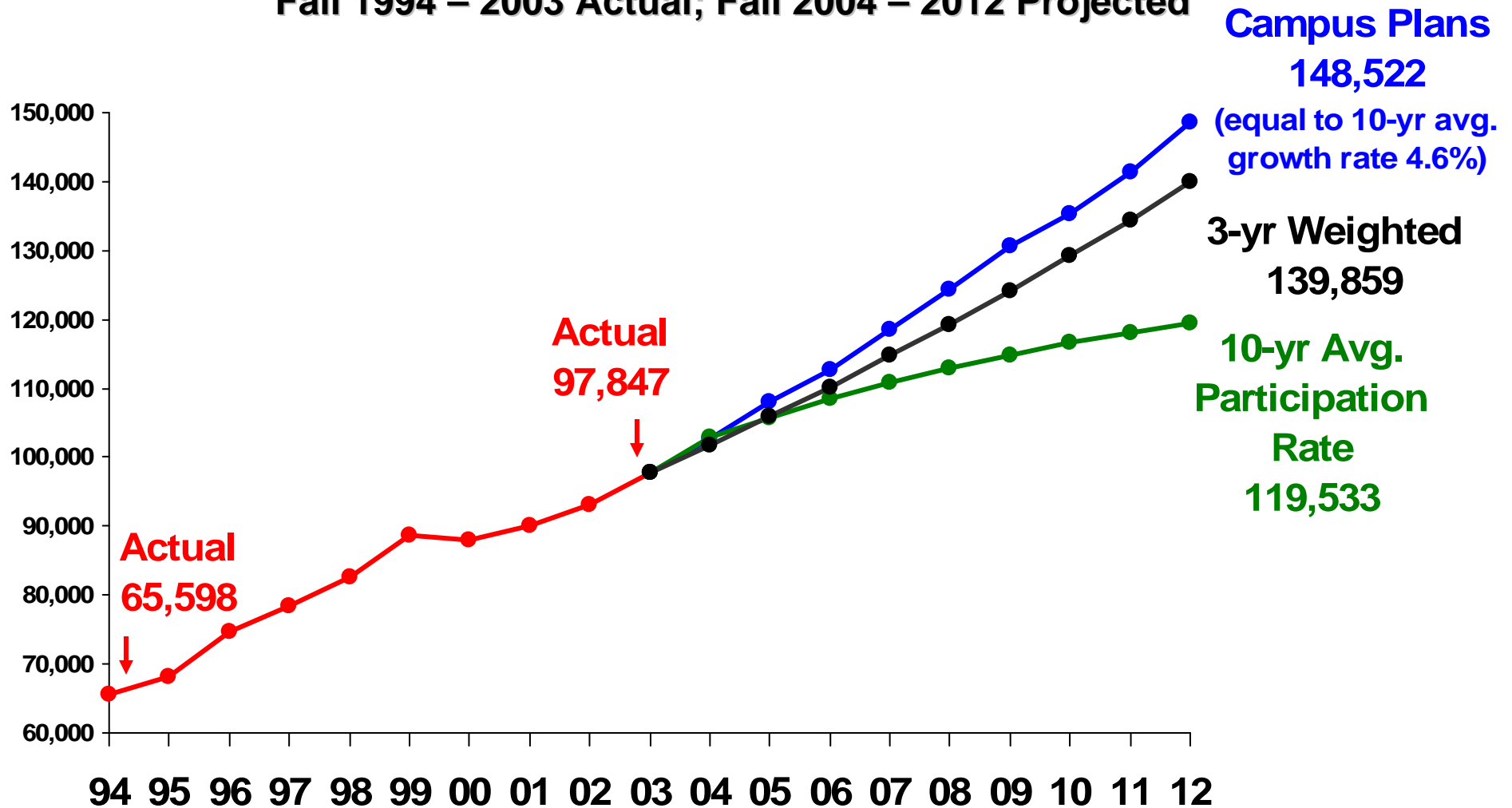


Source: UCCSN Enrollment Plans 2004



Projected Enrollment

Headcount Enrollment Projections Fall 1994 – 2003 Actual; Fall 2004 – 2012 Projected

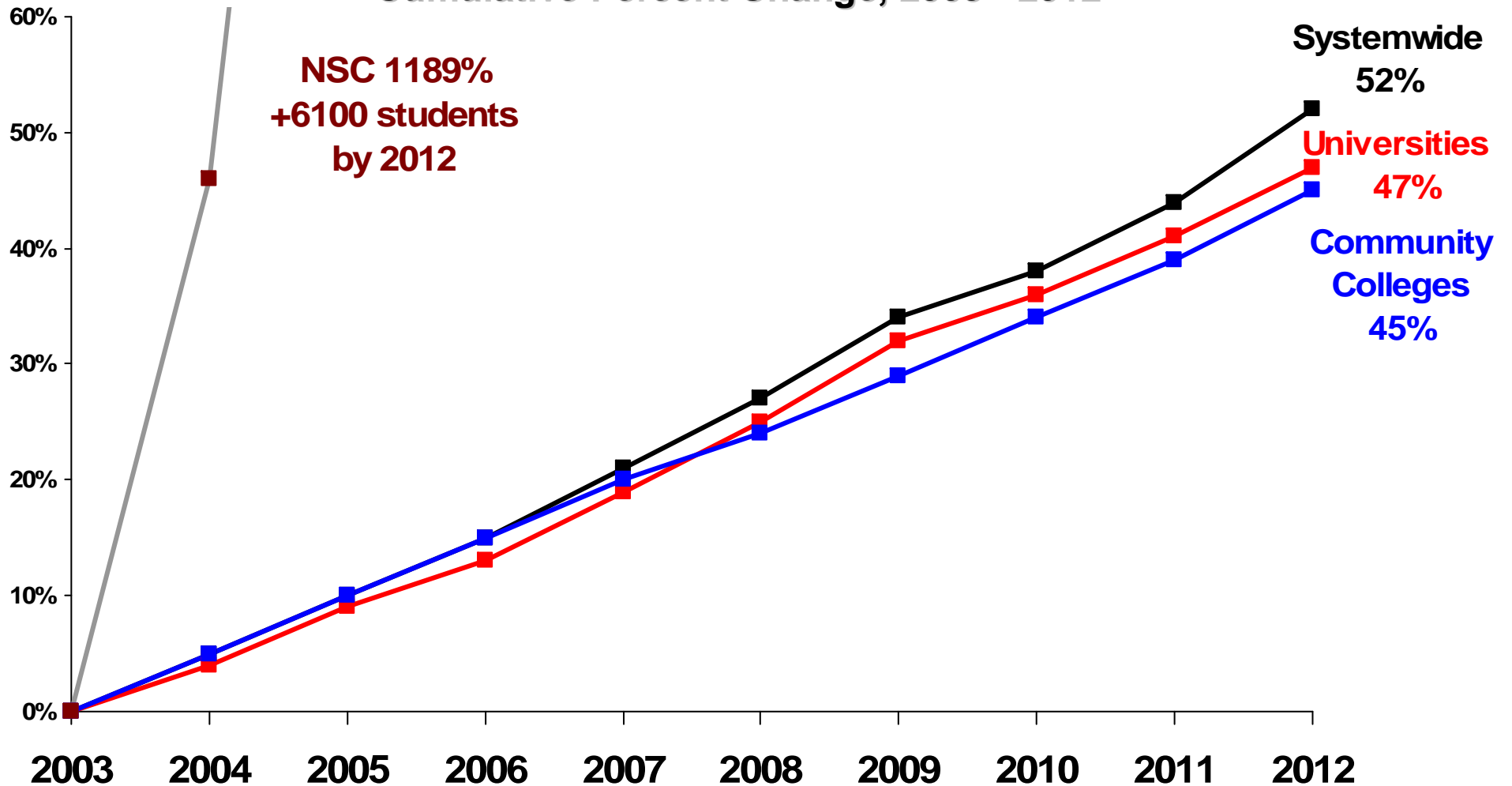


Source: UCCSN Official Enrollment Report; UCCSN Enrollment Plans 2004



Enrollment Plans

Fall Headcount by Institution Type Cumulative Percent Change, 2003 - 2012

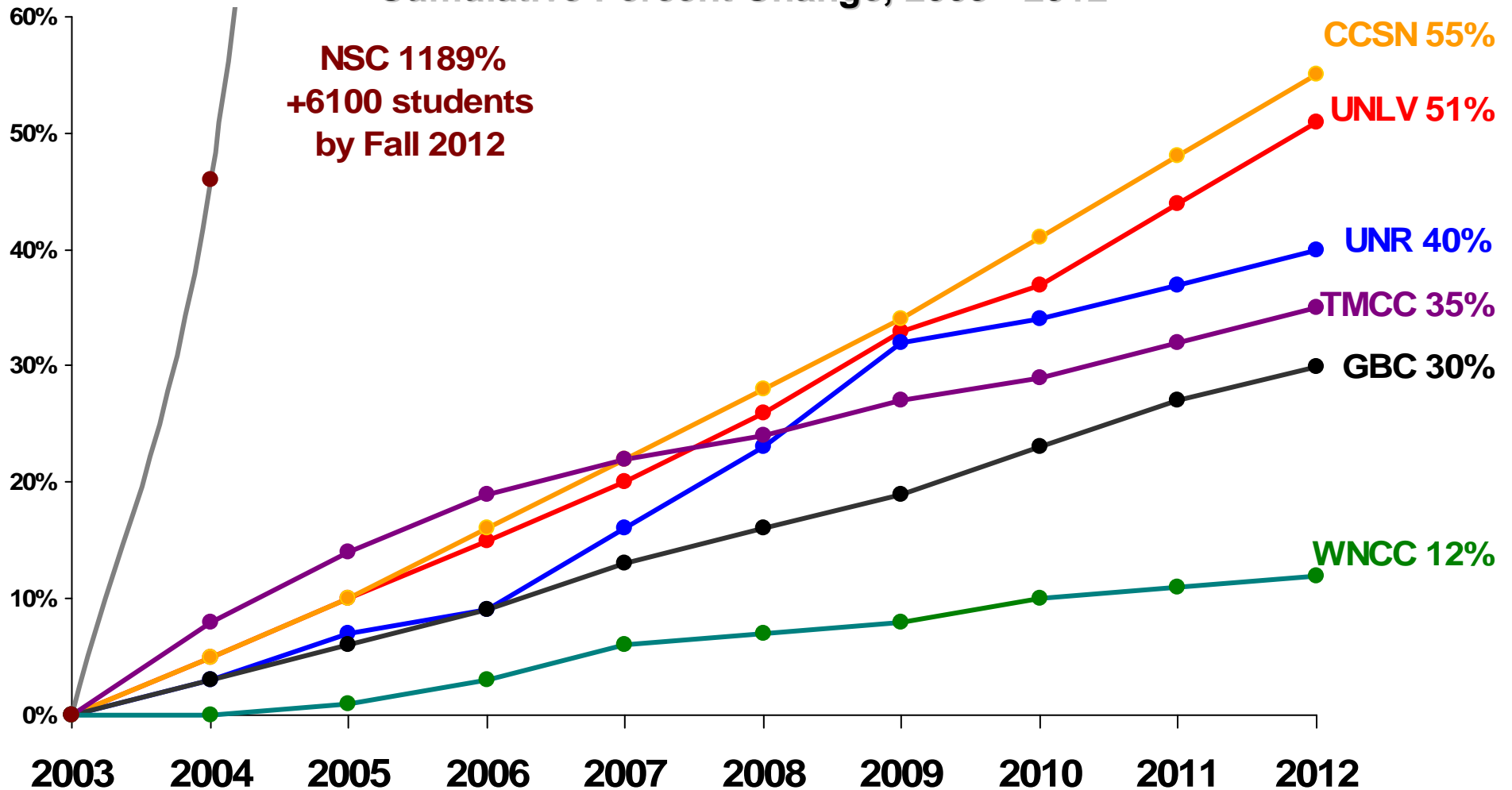


Source: UCCSN Enrollment Plans 2003-04 thru 2012-13



Enrollment Plans

Fall Headcount by Institution Cumulative Percent Change, 2003 - 2012



Source: UCCSN Enrollment Plans 2003-04 thru 2012-13



Enrollment Plans

Planned Headcount by Institution 2003 - 2012

FALL TERM	UNLV	UNR	CCSN	GBC	TMCC	WNCC	NSC	TOTAL
2003*	26,393	15,534	35,496	3,258	11,480	5,174	512	97,847
2004	27,713	15,966	37,271	3,356	12,386	5,199	850	102,741
2005	29,098	16,671	39,134	3,456	13,072	5,249	1,500	108,180
2006	30,262	16,965	41,091	3,560	13,684	5,349	2,100	113,011
2007	31,775	18,087	43,146	3,667	13,977	5,499	2,700	118,851
2008	33,364	19,146	45,303	3,777	14,262	5,554	3,300	124,707
2009	35,032	20,480	47,568	3,890	14,539	5,610	3,800	130,919
2010	36,083	20,814	49,946	4,007	14,814	5,666	4,300	135,630
2011	37,887	21,280	52,444	4,127	15,139	5,722	5,100	141,700
2012	39,782	21,765	55,066	4,251	15,459	5,780	6,600	148,702

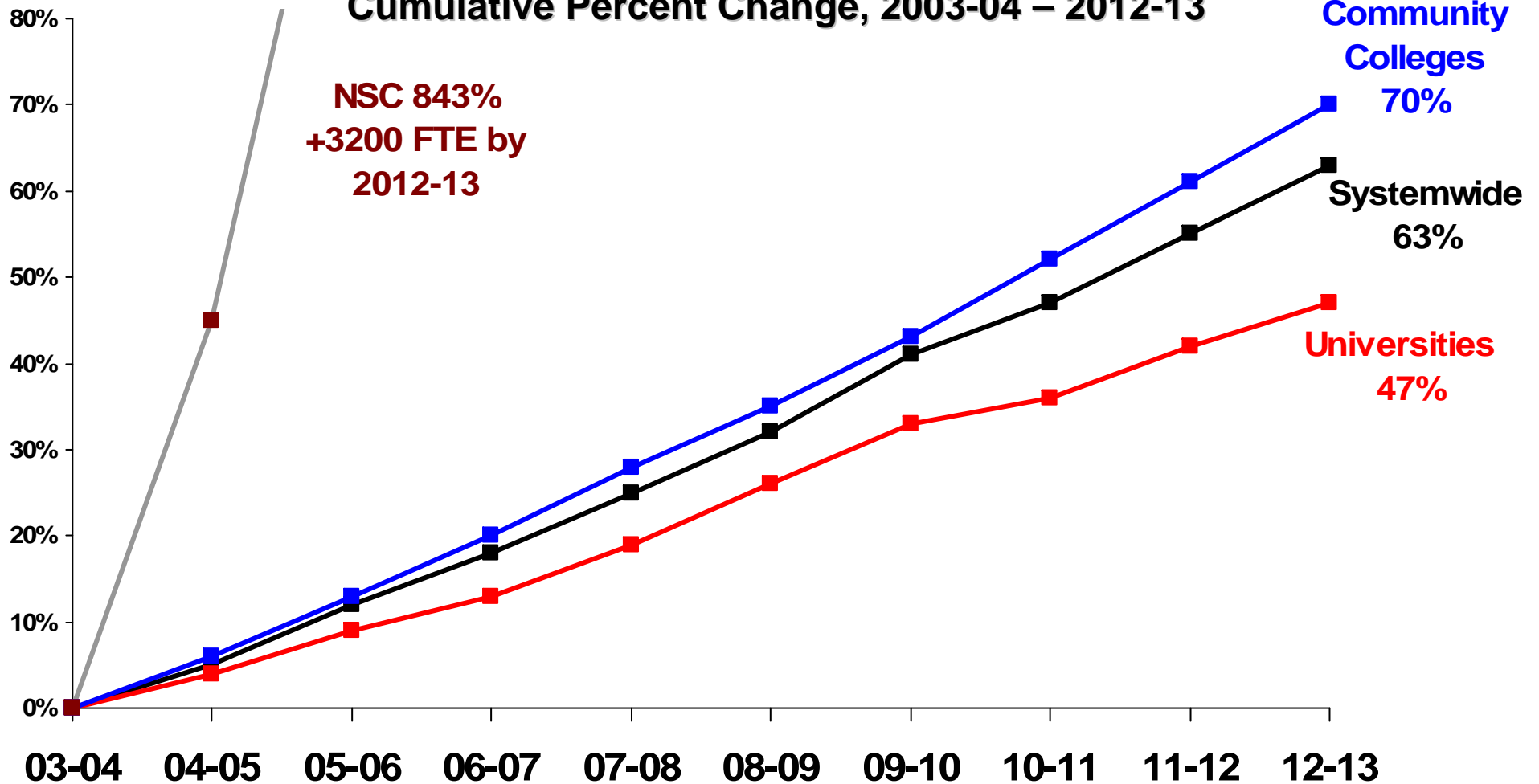
*Fall 2003 represents a preliminary headcount



Enrollment Plans

Student FTE by Institution Type

Cumulative Percent Change, 2003-04 – 2012-13

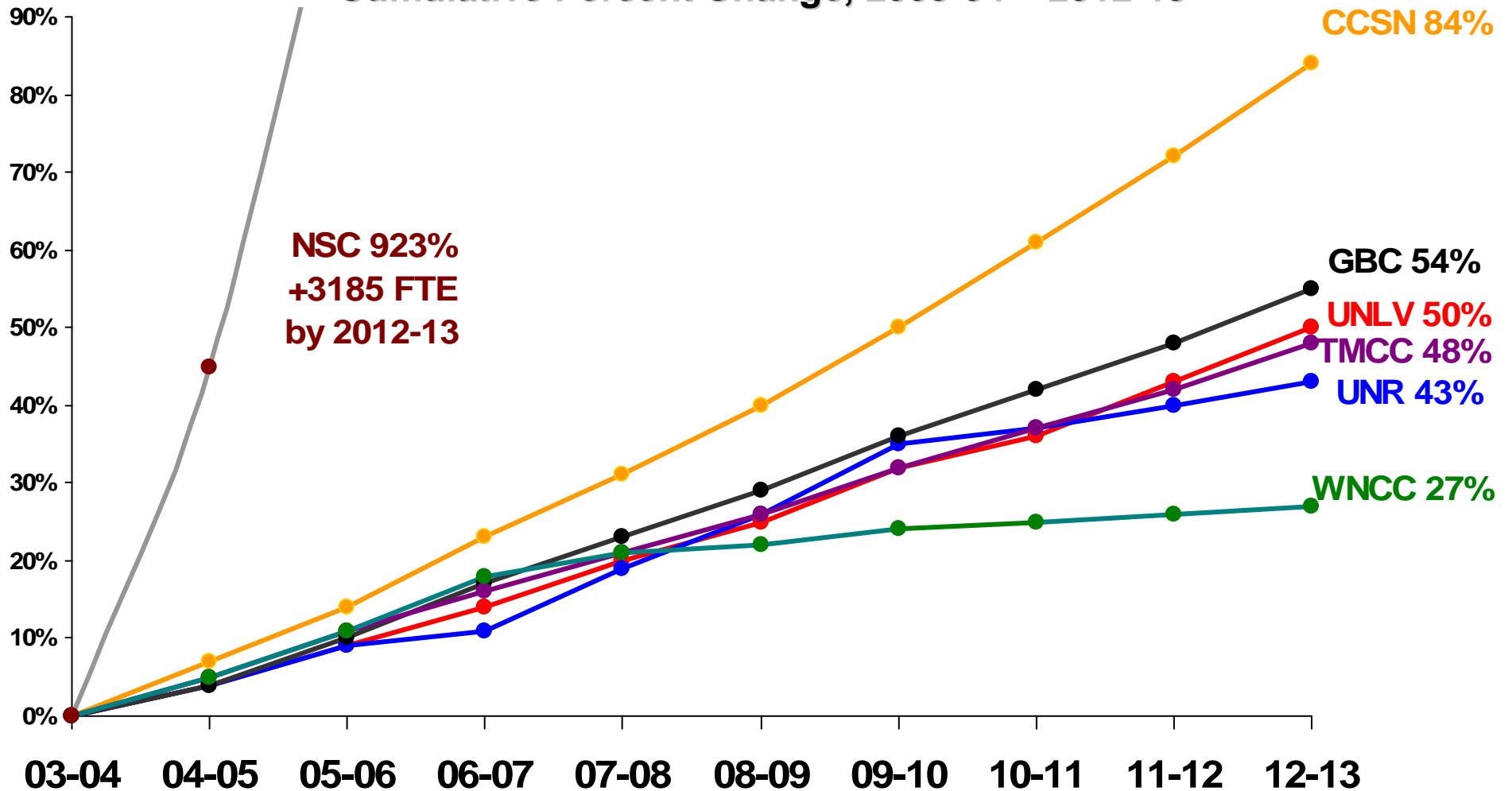




Enrollment Plans

Student FTE by Institution

Cumulative Percent Change, 2003-04 – 2012-13



Source: UCCSN Enrollment Plans 2003-04 thru 2012-13



Enrollment Plans

Planned FTE by Institution 2003-04 – 2012-13

YEAR	UNLV	UNR	CCSN	GBC	TMCC	WNCC	NSC	TOTAL
2003-04	18,145	11,532	17,812	1,437	5,522	2,180	385	57,013
2004-05	18,914	11,991	19,059	1,492	5,798	2,288	567	60,108
2005-06	19,860	12,560	20,393	1,580	6,119	2,415	879	63,805
2006-07	20,654	12,812	21,821	1,682	6,405	2,568	1,155	67,096
2007-08	21,687	13,691	23,348	1,770	6,693	2,640	1,485	71,313
2008-09	22,771	14,512	24,982	1,859	6,978	2,666	1,815	75,583
2009-10	23,910	15,522	26,731	1,951	7,262	2,693	2,090	80,158
2010-11	24,627	15,790	28,602	2,042	7,566	2,720	2,365	83,711
2011-12	25,858	16,158	30,604	2,132	7,866	2,747	2,805	88,170
2012-13	27,151	16,540	32,747	2,222	8,166	2,774	3,630	93,231

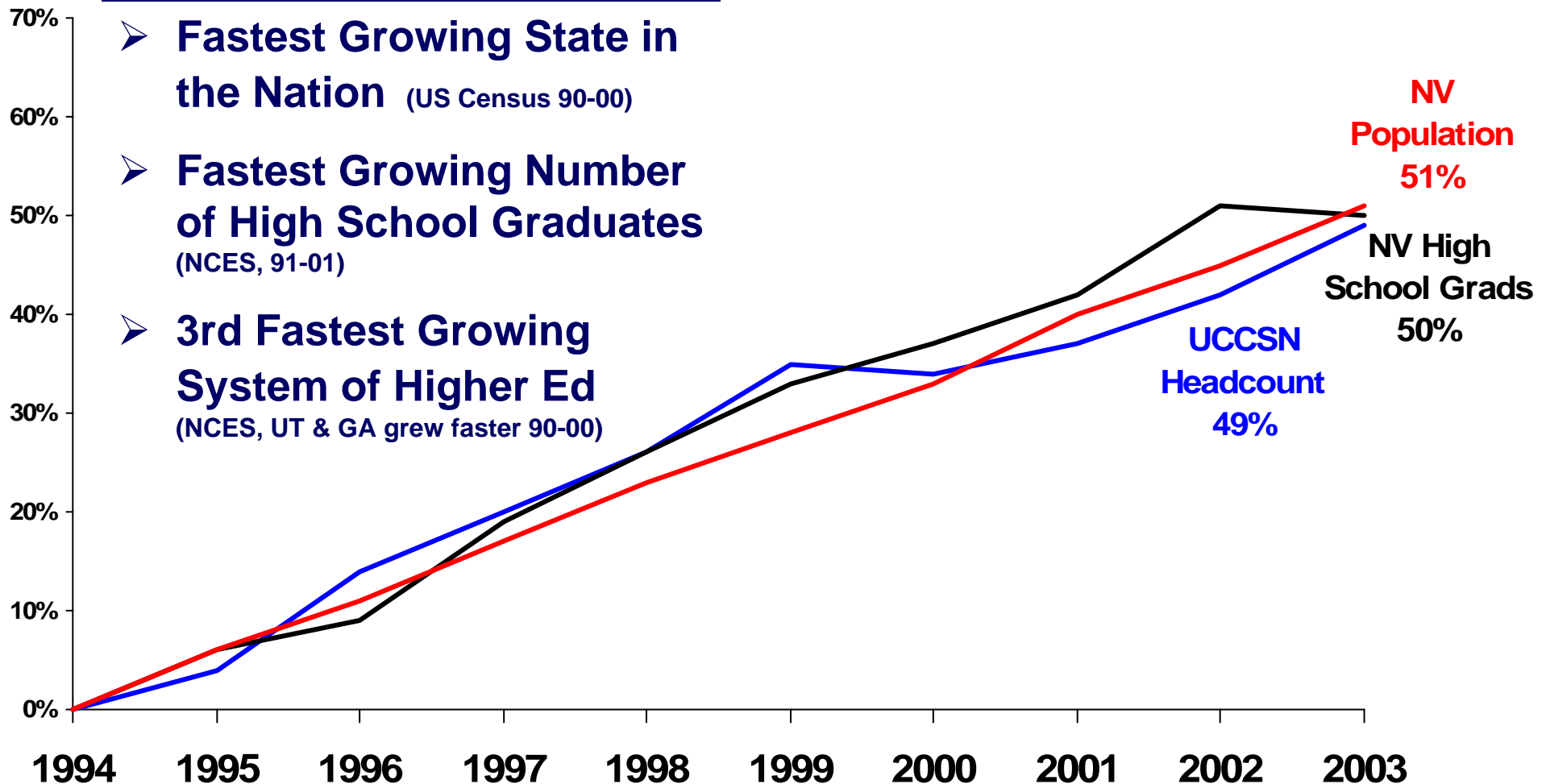


Population Trends



Population & Enrollment History

1994 through 2003

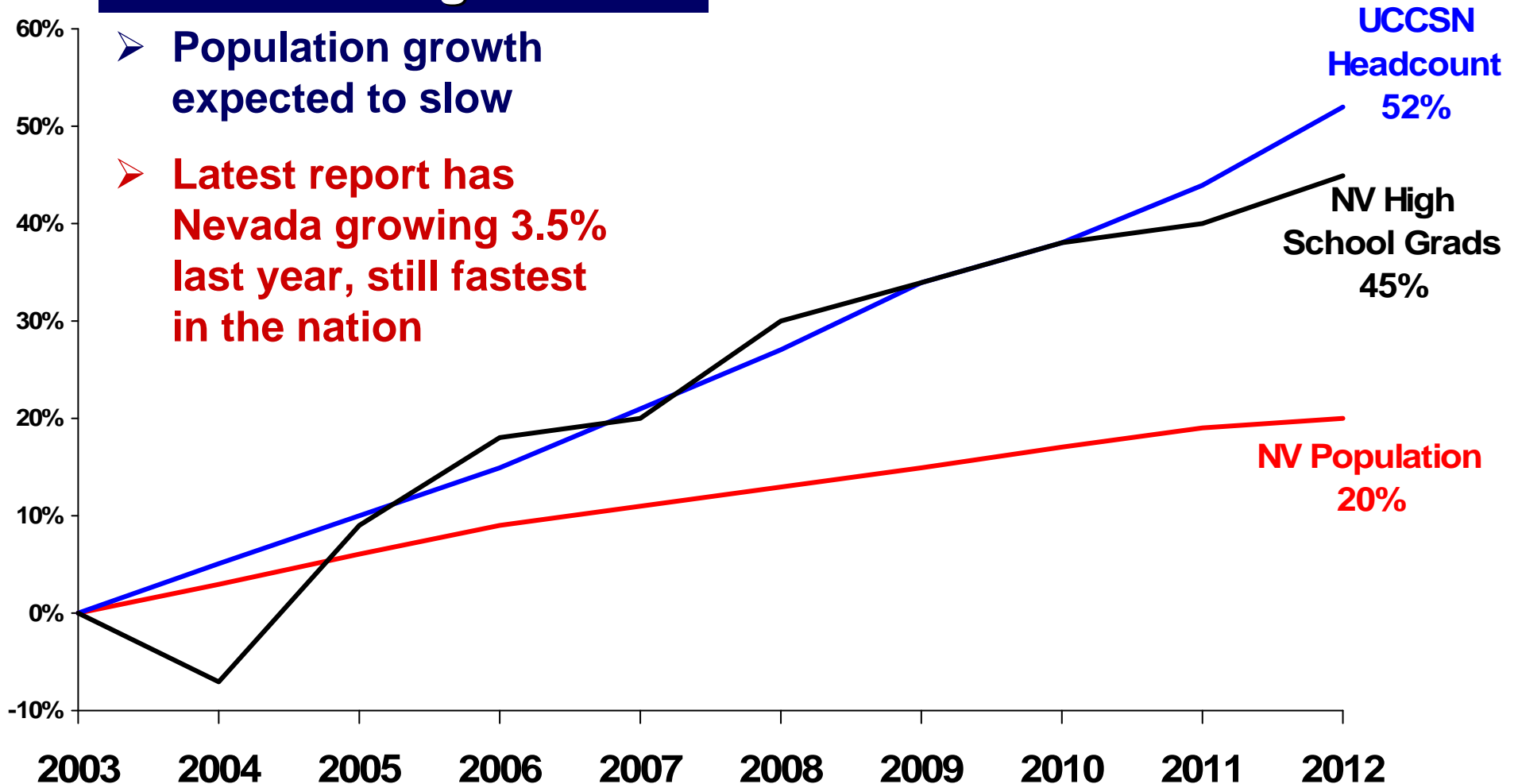


Source: UCCSN enrollment growth of 49% based upon Official UCCSN Enrollment Report, NV Population growth of 51% from State of Nevada Demographer, NV Public High School Graduate growth of 50% from NV Department of Education



Population & Enrollment Projections

2003 through 2012



Source: UCCSN enrollment growth of 52% based upon Enrollment Plans 2004, NV Population growth of 20% projected by State of Nevada Demographer, NV Public High School Graduate growth of 45% projected by UCCSN System Admin.



Population & Enrollment History

Population, High School Graduates, & UCCSN Enrollment Actual (1994 – 2003) & Projected (2003 – 2012)

Actual	1994	2003	# increase	% increase
Nevada Population	1,522,044	2,292,957	770,913	51%
NV High School Grads	9,485	14,202	4,717	50%
UCCSN Enrollment	65,598	97,847	32,249	49%

Projected	2003	2012	# increase	% increase
Nevada Population	2,292,957	2,753,255	460,298	20%
NV High School Grads	14,202	20,576	6,374	45%
UCCSN Enrollment	97,847	148,242	50,395	52%



Population Trends

Population Estimates by County/Region 1994 - 2003

County/Region	1994	2003	# increase	% increase
Clark County	990,564	1,634,633	644,069	65%
Washoe County	293,141	362,458	69,317	24%
Carson City	44,730	53,333	8,603	19%
Rural South (Nye, Lincoln, Esmeralda)	26,944	42,055	15,111	56%
Rural Northeast (Elko, White Pine, Eureka, Lander, Humboldt)	71,542	78,545	7,003	10%
Rural Northwest (Storey, Churchill, Mineral, Lyon, Pershing, Douglas)	95,123	121,933	26,809	28%
Nevada	1,522,044	2,292,957	770,913	51%



Nevada Population Trends

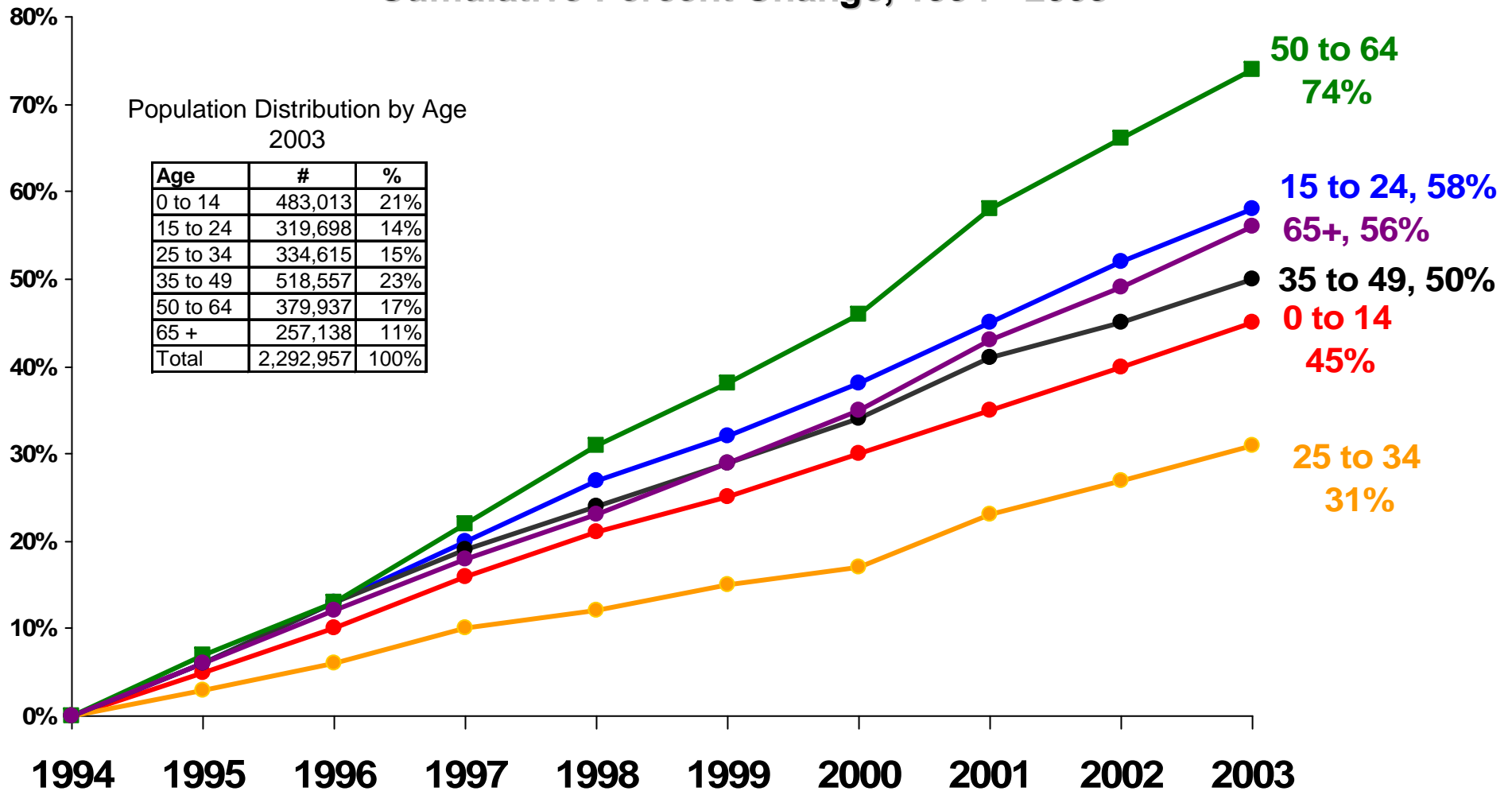
Population Projections by County/Region 2003 - 2012

County/Region	2003	2012	# increase	% increase
Clark County	1,634,633	2,023,697	389,064	24%
Washoe County	362,458	407,142	44,684	12%
Carson City	53,333	60,352	7,019	19%
Rural South (Nye, Lincoln, Esmeralda)	42,055	51,822	9,767	23%
Rural Northeast (Elko, White Pine, Eureka, Lander, Humboldt)	78,545	78,235	-311	0%
Rural Northwest (Storey, Churchill, Mineral, Lyon, Pershing, Douglas)	121,933	132,007	10,074	8%
Nevada	2,292,957	2,753,255	460,298	20%



Nevada Population Trends

Population Growth by Age Cumulative Percent Change, 1994 - 2003

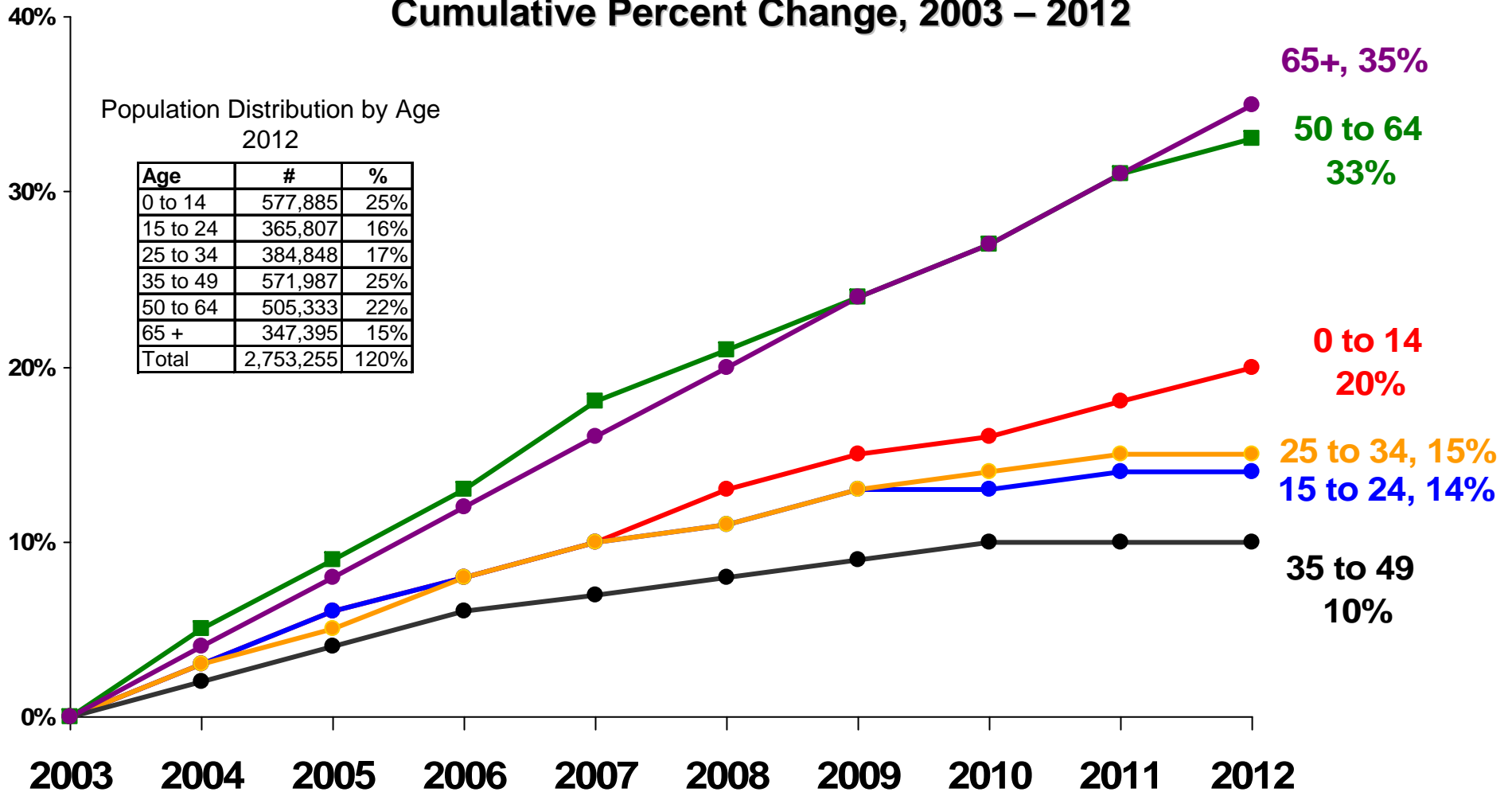


Source: State of Nevada Demographer, November 2002



Nevada Population Trends

Projected Population Growth by Age Cumulative Percent Change, 2003 – 2012

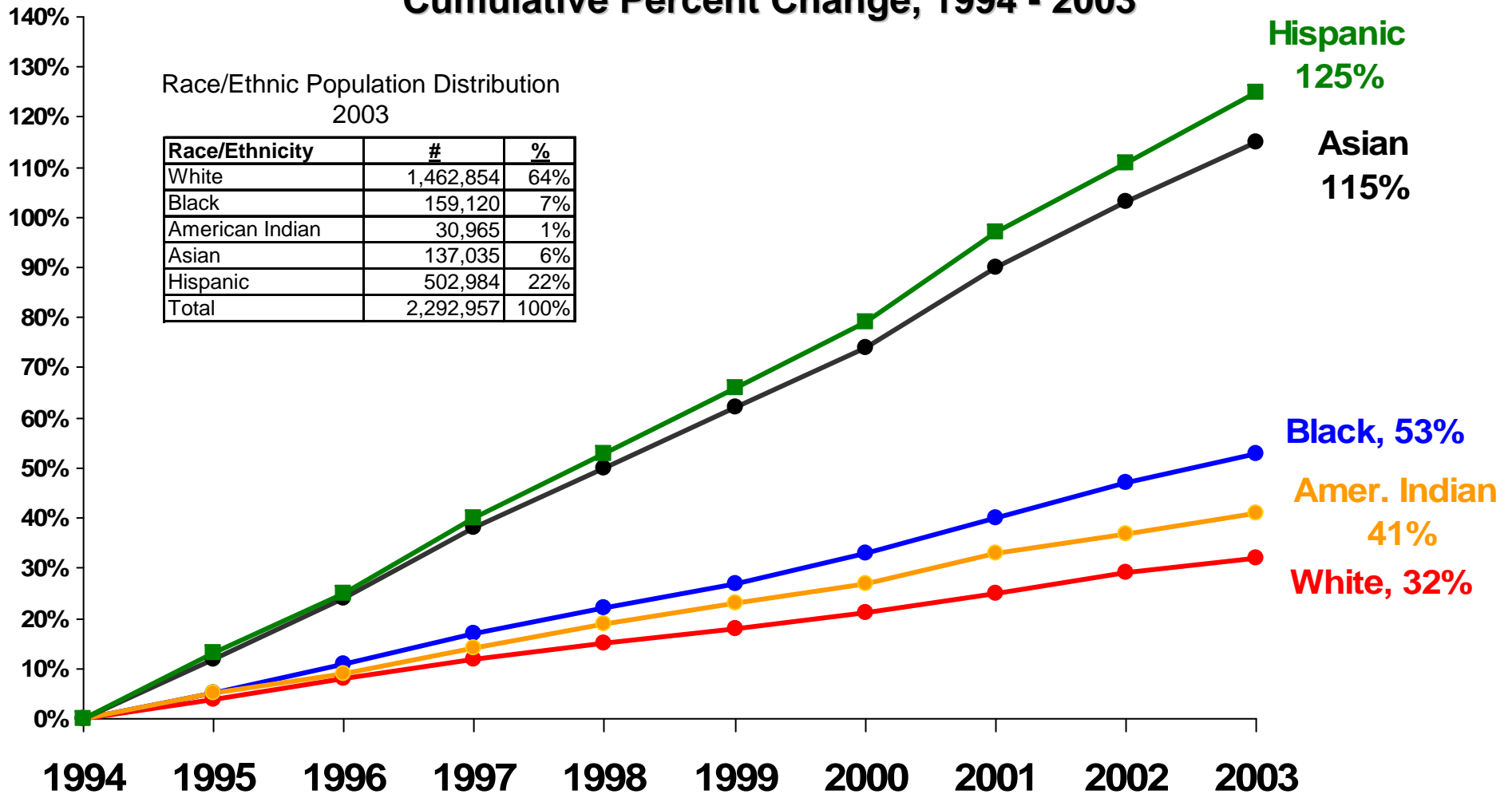


Source: State of Nevada Demographer, November 2002



Nevada Population Trends

Population Growth by Race/Ethnicity Cumulative Percent Change, 1994 - 2003

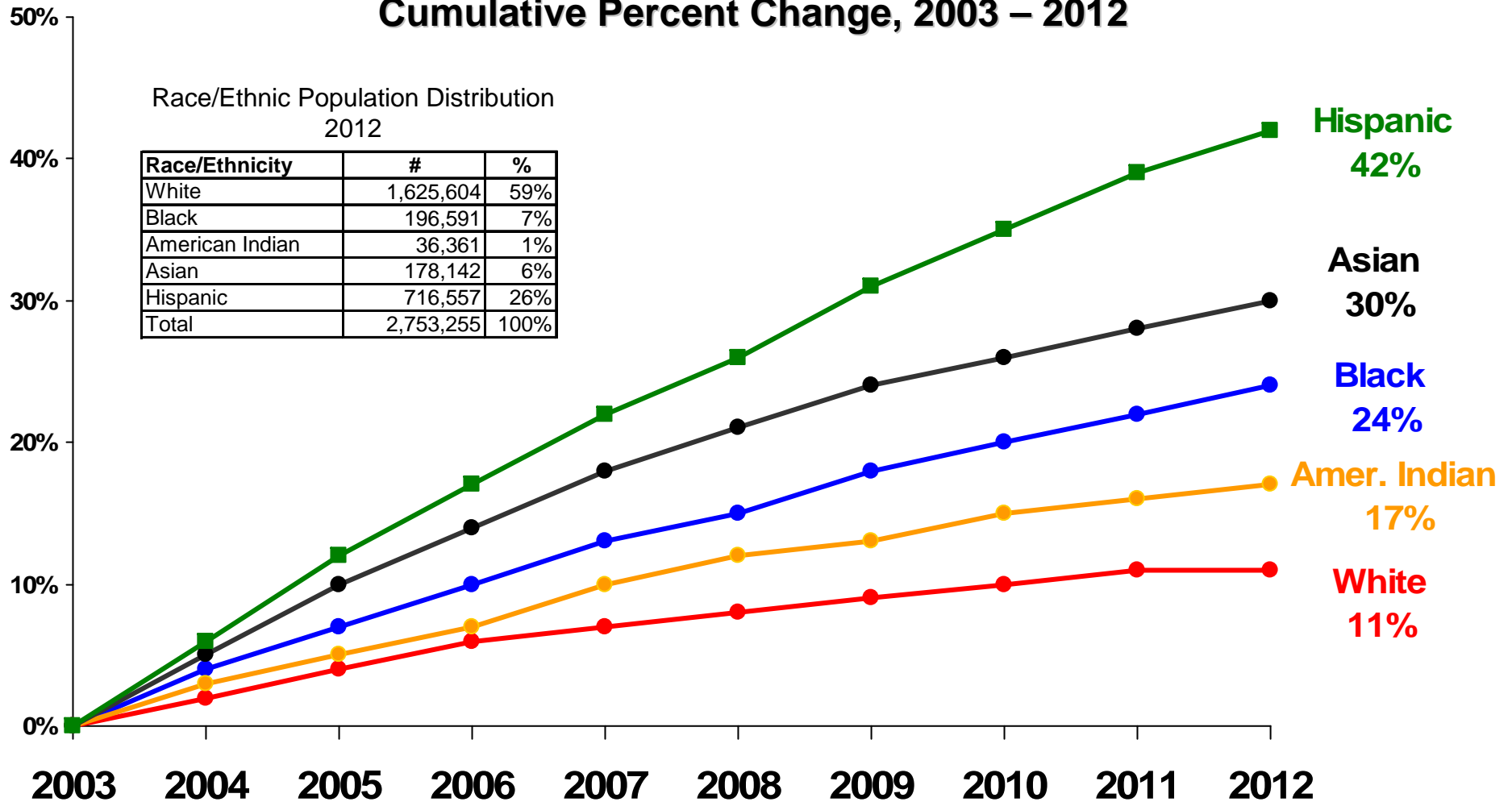


Source: State of Nevada Demographer, November 2002



Nevada Population Trends

Projected Population Growth by Race/Ethnicity Cumulative Percent Change, 2003 – 2012



Source: State of Nevada Demographer, November 2002



Migration of College Educated

In-migration vs. Out-migration

Young, Single, & College Educated
1995 to 2000

Migration of individuals who are between the ages of 25 – 39 years old, unmarried, and have earned a bachelor's degree

	In-Migrants	Out-Migrants	Net Migration	Rank
Nevada	13,651	6,863	6,788	1 st among states
Las Vegas	11,608	4,764	6,844	2 nd among metro areas



Migration of College Students

Import/Export of College-Going Students

Fall 2002

In-Migrants	Out-Migrants	Net Migration	NV Ratio	National Ratio
1,406	1,917	-511	.73	1.19

NV Students Attending Anywhere	NV Students Attending In State	NV In-State Enrollment Rate	National Rate
10,488	8,571	82%	85%

These data include all first-time freshmen – not just those attending directly out of high school.



Summary



Summary

- Looking Back Ten Years (1994 – 2003):
 - UCCSN Headcount grew by 32,000 students (49%)
 - UCCSN Student FTE increased by 22,000 (63%)
 - CCSN experienced the most growth (headcount 107%, FTE 155%)
 - Nevada population, high school graduates, and UCCSN headcount all increased at approximately the same rate (50%)
 - The vast majority of Nevada's population growth came from Clark County (644,000 of 770,000 new residents)
 - 50 to 64 years old age group experienced highest growth (74%)
 - Hispanics grew faster than any other racial/ethnic group (125%)



Summary

- Looking Forward Ten Years (2003 – 2012):
 - UCCSN Headcount projected to grow by 50,000 students (52%)
 - UCCSN Student FTE projected to increase by 64% (identical to 1994-2003 growth rate)
 - NSC plans for most aggressive growth, followed by CCSN (55%) & UNLV (51%)
 - Nevada high school graduates and UCCSN headcount expected to increase at the same rate (approx. 50%)
 - Nevada population is expected to grow at a slower rate (20%), although recent population figures suggest otherwise
 - Majority of Nevada's population growth projected for Clark County (389,000 of 460,000 new residents)
 - Age category of 65 years and older projected to grow at the fastest rate (35%)
 - Hispanics projected to continue at fastest growth rate (42%)